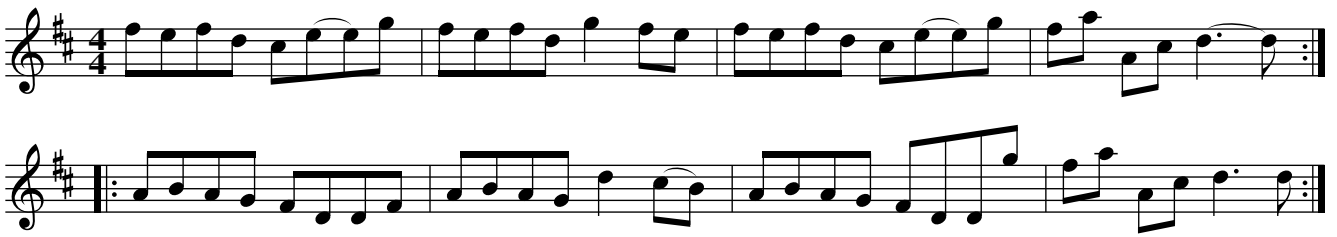


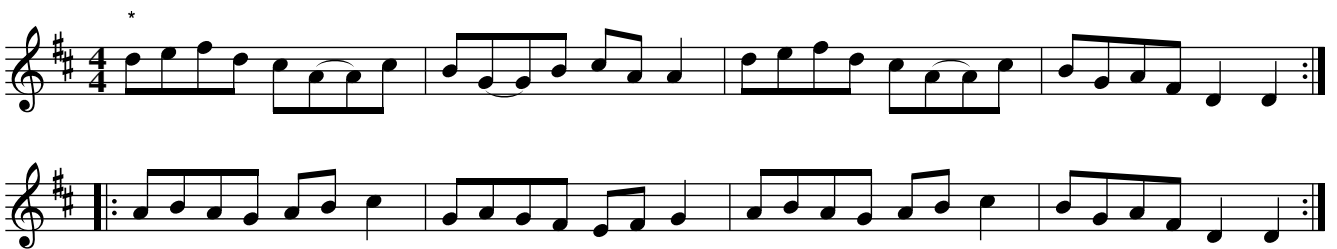
Billy's a Bonny Lad. JWDM.01



The High Road to Gallaway. JWDM.02

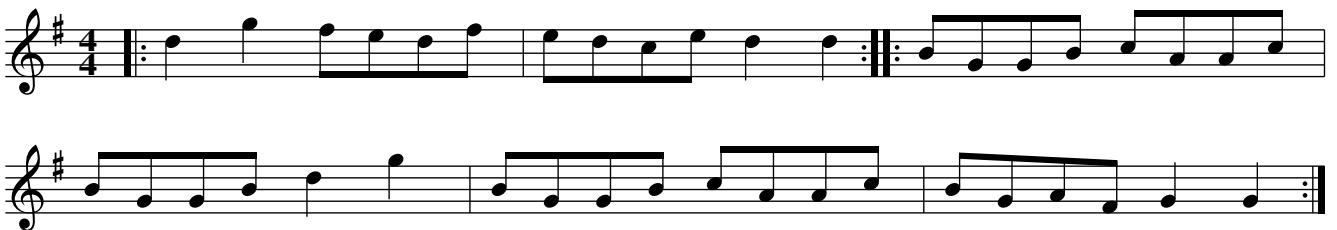
Gallway Girls, aka. JWDM.02

All The Way To Galway, aka. JWDM.02



Try in key of G..(poss. G sharp in MS)

Daniel Cooper. JWDM.03



The 29th of May. JWDM.04

King Enjoys His Own Again, aka. JWDM.04



## Stanley For Ever. JWDM.05

Mr.Lano's Maggot, aka. JWDM.05

Musical score for 'Stanley For Ever. JWDM.05' (Mr.Lano's Maggot, aka. JWDM.05). The score is written in 4/4 time, key of B-flat major. It consists of four staves of music. The first staff begins with a treble clef, a key signature of one flat, and a 4/4 time signature. The melody is composed of eighth and quarter notes. The second staff continues the melody. The third staff begins with a repeat sign. The fourth staff concludes the piece with a double bar line and repeat dots.

## Shutters Hornpipe. JWDM.06

Musical score for 'Shutters Hornpipe. JWDM.06'. The score is written in 4/4 time, key of D major. It consists of four staves of music. The first staff begins with a treble clef, a key signature of two sharps, and a 4/4 time signature. The melody is composed of eighth and quarter notes. The second staff continues the melody and includes an asterisk (\*) above a note. The third staff begins with a repeat sign and also includes an asterisk (\*) above a note. The fourth staff concludes the piece with a double bar line and repeat dots.

O. K., now try D# in Bars 7,12,.,CGP.

## Cuddle me Cuddy. JWDM.07

Peacock Followed the Hen, aka. JWDM.07

Musical score for 'Cuddle me Cuddy. JWDM.07' (Peacock Followed the Hen, aka. JWDM.07). The score is written in 12/8 time, key of D major. It consists of two staves of music. The first staff begins with a treble clef, a key signature of two sharps, and a 12/8 time signature. The melody is composed of eighth and quarter notes. The second staff begins with a repeat sign and concludes the piece with a double bar line and repeat dots.

Time sig 12/8, key D in MS

Nancy Dawson's HP. JWDM.08

*"for a country dance" ()*



Written in alternative 6/8 and 2/4 rhythms.

Soldiers Joy. JWDM.09



Bonny Kate of Aberdeen. JWDM.10



## Sailors Delight. JWDM.11



?should be 9/8 with last bar to finish?T.T.

## Down With The French. JWDM.12



## Jack the Horse Courser. JWDM.13



Something odd about the key in B music. Try Dmaj.

Barley Raking—for a Jigg or Reel. JWDM.14

Key G in MS

The musical notation for 'Barley Raking—for a Jigg or Reel. JWDM.14' consists of three staves of music in G major (one sharp) and 6/8 time. The first staff begins with a treble clef, a key signature of one sharp (F#), and a 6/8 time signature. The melody is written in a single line. The second and third staves continue the melody, with the third staff ending with a double bar line and repeat dots. The text 'Key G in MS' is written below the first staff.

Rowland Hornpipe. JWDM.15  
Rowling Hornpipe, aka. JWDM.15

The musical notation for 'Rowland Hornpipe. JWDM.15' consists of eight staves of music in G major (one sharp) and 4/4 time. The first staff begins with a treble clef, a key signature of one sharp (F#), and a 4/4 time signature. The melody is written in a single line. The second and third staves continue the melody, with the third staff featuring two 'X' symbols above the notes. The fourth and fifth staves continue the melody, with the fifth staff ending with a double bar line and repeat dots. The sixth and seventh staves continue the melody, with the seventh staff ending with a double bar line and repeat dots. The eighth staff continues the melody, ending with a double bar line and repeat dots.

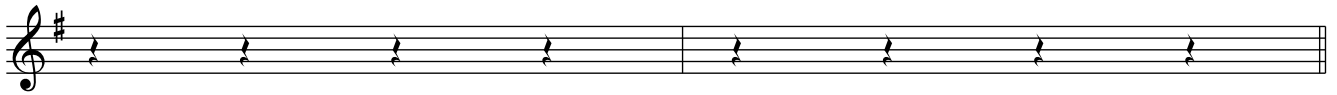
## Maiden Fair. JWDM.16



## Turn again Whittington. JWDM.17



Unedited



Edited Version



## Three Sheep Skins. JWDM.18



## God save the King. JWDM.19



## Betty can Drink no Water. JWDM.20



Could be in D minor really

Charming Phillis – a Minuet. JWDM.21

Two staves of musical notation for 'Charming Phillis – a Minuet. JWDM.21'. The music is in treble clef, key of D major (one sharp), and 3/4 time. The first staff contains the first eight measures, and the second staff contains the next eight measures, ending with a double bar line and repeat dots.

Ballance A Straw. JWDM.22  
Balance The Sraw, aka. JWDM.22

Three staves of musical notation for 'Ballance A Straw. JWDM.22'. The music is in treble clef, key of D major (one sharp), and 4/4 time. The first staff contains the first eight measures, the second staff contains the next eight measures, and the third staff contains the final eight measures, ending with a double bar line and repeat dots.

Jack upon the Green. JWDM.23

*Makes sense in 9/8 ( )*

Three staves of musical notation for 'Jack upon the Green. JWDM.23'. The music is in treble clef, key of D major (one sharp), and 9/8 time. The first staff contains the first eight measures, the second staff contains the next eight measures, and the third staff contains the final eight measures, ending with a double bar line and repeat dots.

## Over the Water to Charley. JWDM.24

Clearly 3 sharps in MS

The musical score for 'Over the Water to Charley. JWDM.24' consists of four staves of music in treble clef. The key signature is three sharps (F#, C#, G#) and the time signature is 6/8. The first staff begins with the text 'Clearly 3 sharps in MS'. The music features a mix of eighth and quarter notes, with some rests. The piece concludes with a double bar line and repeat dots.

## Cold and Thow. JWDM.25

The musical score for 'Cold and Thow. JWDM.25' consists of three staves of music in treble clef. The key signature is one sharp (F#) and the time signature is 6/8. The music is primarily composed of quarter and eighth notes. The third staff includes the annotation 'sic' below a specific note. The piece ends with a double bar line and repeat dots.

## Highland Laddy – old way. JWDM.26

The musical score for 'Highland Laddy – old way. JWDM.26' consists of four staves of music in treble clef. The key signature is one sharp (F#) and the time signature is 4/4. The music features a variety of note values, including quarter, eighth, and sixteenth notes, with some beamed sixteenth notes. The piece concludes with a double bar line and repeat dots.



Britain Strike Home. JWDM.27  
Britons Strike Home. JWDM.27

Musical score for 'Britain Strike Home. JWDM.27' and 'Britons Strike Home. JWDM.27'. The score is written in treble clef with a key signature of one sharp (F#) and a 3/4 time signature. It consists of three staves of music. The first staff begins with a treble clef, a key signature of one sharp, and a 3/4 time signature. The music features a series of eighth and quarter notes, with a repeat sign and first/second endings at the end of the first line. The second and third staves continue the melody with similar rhythmic patterns and note values.

Lord Carmarthen's March. JWDM.28

Musical score for 'Lord Carmarthen's March. JWDM.28'. The score is written in treble clef with a key signature of one sharp (F#) and a 4/4 time signature. It consists of four staves of music. The first staff begins with a treble clef, a key signature of one sharp, and a 4/4 time signature. The music features a series of eighth and quarter notes, with a repeat sign and first/second endings at the end of the first line. The second and third staves continue the melody with similar rhythmic patterns and note values. The fourth staff concludes the piece with a final cadence.

Chipin Fair. JWDM.29  
Sailor's Hornpipe, aka. JWDM.29  
College Hornpipe, aka. JWDM.29

Musical score for 'Chipin Fair. JWDM.29', 'Sailor's Hornpipe, aka. JWDM.29', and 'College Hornpipe, aka. JWDM.29'. The score is written in treble clef with a key signature of one sharp (F#) and a 4/4 time signature. It consists of four staves of music. The first staff begins with a treble clef, a key signature of one sharp, and a 4/4 time signature. The music features a series of eighth and quarter notes, with a repeat sign and first/second endings at the end of the first line. The second and third staves continue the melody with similar rhythmic patterns and note values. The fourth staff concludes the piece with a final cadence.

## A Rigadown. JWDM.30



Bars 2,11,12, reconstructed from missing corner.

## Green Sleeves or Kick my ?. JWDM.31

Kick My Arse, aka. JWDM.31

Musical notation for 'Green Sleeves or Kick my ?. JWDM.31'. The piece is in G major (one sharp) and 6/8 time. It consists of four staves. The first staff contains 12 bars of music, with the text 'Key A in MS' written below it. The second and fourth staves each contain 12 bars of music. The third staff contains 12 bars of music, with a repeat sign at the beginning.

## Dusty Miller. JWDM.32

Musical notation for 'Dusty Miller. JWDM.32'. The piece is in G major (one sharp) and 3/4 time. It consists of two staves. The first staff contains 12 bars of music. The second staff contains 12 bars of music, with an asterisk above the 7th bar, indicating a reconstructed section.

Bar 7 reconstructed from missing corner in MS.

Bobing Joan. JWDM.33

Bobbing Joan. JWDM.33



only 1 sharp in MS



As written, but should be 3/4 as in Vickers..Try in key of D?.

Coblers Hornpipe. JWDM.34



Bonny Lads. JWDM.35



Gee Woe Dobin. JWDM.36

Key G in ms



B part looks and sounds a bit awkward.

## Flowers of Edinburgh. JWDM.37

key D in ms

The musical score for 'Flowers of Edinburgh. JWDM.37' consists of four staves of music in 4/4 time, key of D major. The first staff begins with a treble clef, a key signature of one sharp (F#), and a 4/4 time signature. The melody is written in a simple, folk-like style. The second staff continues the melody. The third staff features a more rhythmic, eighth-note pattern. The fourth staff concludes the piece with a double bar line and repeat dots.

## White Cock-aid. JWDM.38

## White Cockade. JWDM.38

The musical score for 'White Cock-aid. JWDM.38' and 'White Cockade. JWDM.38' consists of four staves of music in 4/4 time, key of D major. The first staff begins with a treble clef, a key signature of one sharp (F#), and a 4/4 time signature. The melody is written in a simple, folk-like style. The second staff continues the melody. The third staff features a more rhythmic, eighth-note pattern. The fourth staff concludes the piece with a double bar line and repeat dots.

## Irish Trot. JWDM.39

key 1 sharp in MS

The musical score for 'Irish Trot. JWDM.39' consists of two staves of music in 6/8 time, key of D major. The first staff begins with a treble clef, a key signature of one sharp (F#), and a 6/8 time signature. The melody is written in a simple, folk-like style. The second staff continues the melody and concludes with a double bar line and repeat dots.

Blackamoors Dance. JWDM.40

Two staves of musical notation in treble clef, key of D major (one sharp), and 2/4 time. The first staff contains a single line of music. The second staff contains a single line of music with an asterisk above the first measure, indicating a repeat sign.

Well, that's what it says. Bar lines may be adrift.

The Green Ship. JWDM.41

Four staves of musical notation in treble clef, key of B-flat major (two flats), and 4/4 time. Each staff contains a single line of music. The first and third staves begin with repeat signs.

Southwork Granadears Trumpet. JWDM.42

Four staves of musical notation in treble clef, key of D major (one sharp), and 3/2 time. The first staff has the annotation "1 sharp in MS" below it. Each staff contains a single line of music. The first and third staves begin with repeat signs.

## Doon the Bank. JWDM.43

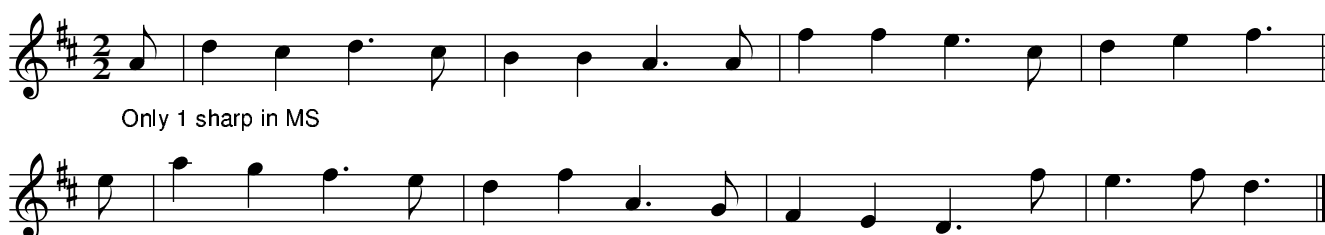
Down the Bank. JWDM.43



## The Highlanders Lamentation. JWDM.44



## A Carol Tune – for Christmas Day. JWDM.45



## Minuet – Play Slow. JWDM.46



Jack upon the Green. JWDM.47

"William Roberts" ()



Oh, well...

God Save The King. JWDM.48



Yung Collins Stole my Hart away. JWDM.49

Young Colin's Stolen etc. JWDM.49



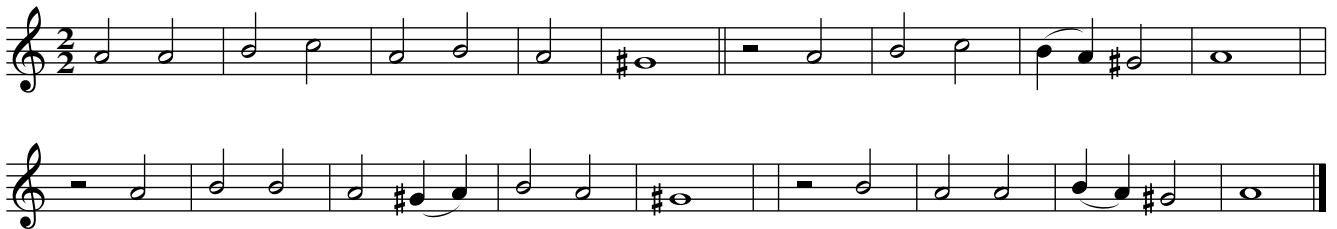
Wilk's Riggadon. JWDM.50



Psalm No. 1. JWDM.51



Psalm No. 116. JWDM.52



Lady Mary Ramsay. JWDM.53



Original difficult to decipher with missing dots.