

Graces. VWMLa.001

Musical score for 'Graces. VWMLa.001' in G minor, 2/4 time. The score consists of six staves of music. The first staff begins with a 'P' (Piano) dynamic marking. The second staff begins with an 'F' (Forte) dynamic marking. The third staff begins with a 'P' dynamic marking. The fourth staff begins with an 'F' dynamic marking. The score includes various rhythmic patterns, including eighth and sixteenth notes, and rests. The piece concludes with a double bar line and repeat dots.

Nun Munckton's Hunt. VWMLa.002

Musical score for 'Nun Munckton's Hunt. VWMLa.002' in D major, common time. The score consists of two staves of music. The first staff begins with a repeat sign. The second staff begins with a repeat sign. The score includes various rhythmic patterns, including eighth and sixteenth notes, and rests. The piece concludes with a double bar line and repeat dots.

Sport of Fancy. VWMLa.003

Musical score for 'Sport of Fancy. VWMLa.003' in D major, common time. The score consists of two staves of music. The first staff includes two fermatas (∞) over the second and fourth measures. The second staff begins with a repeat sign. The score includes various rhythmic patterns, including eighth and sixteenth notes, and rests. The piece concludes with a double bar line and repeat dots.

Lasses of Our Town. VWMLa.004  
 The Three Merry Lads. VWMLa.004  
 The Highway to Eglinton, aka(ish!). VWMLa.004

Musical notation for 'Lasses of Our Town' in 6/8 time, D major. The score consists of three staves. The first staff features a melody with three trills. The second and third staves provide accompaniment with a rhythmic pattern of eighth and sixteenth notes.

Key Dmaj in MS.

Scots Bonnet. VWMLa.005

Musical notation for 'Scots Bonnet' in 2/4 time, D major. The score consists of three staves. The first staff has a melody with dotted rhythms. The second and third staves provide accompaniment with a steady eighth-note pattern.

Wakefield Hunt. VWMLa.006

Musical notation for 'Wakefield Hunt' in 6/8 time, D major. The score consists of three staves. The first staff has a melody with dotted rhythms. The second and third staves provide accompaniment with a rhythmic pattern of eighth and sixteenth notes.

Widdow Wadman. VWMLa.007  
The Widow's Wedding, aka. VWMLa.007



Lilling Hall. VWMLa.008  
Linnen Hall, aka. VWMLa.008



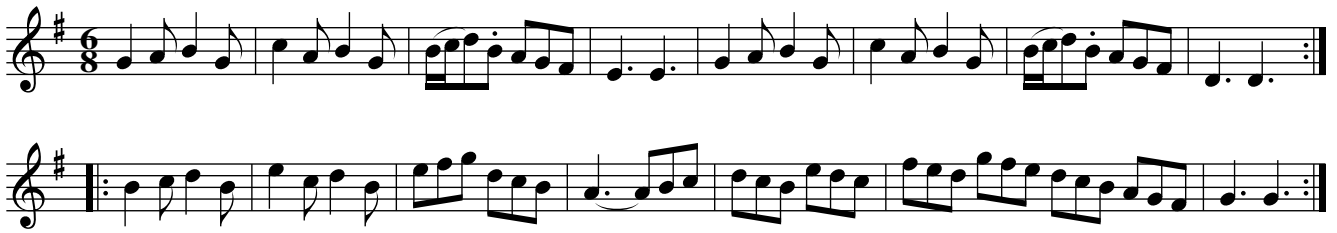
O the Days When I was Young. VWMLa.009  
O'The Days When I was Young. VWMLa.009



Bishop. VWMLa.010



Castle Down. VWMLa.011  
 Fourpence Ha'penny Farthing, aka. VWMLa.011



Lucy's Delight. VWMLa.012



I'll Have a Wife of My Own. VWMLa.013



Berks of Abbergelede. VWMLa.014  
 Birks of Abergeldie, aka. VWMLa.014



Suckey Bids Me. VWMLa.015



Miss Hoberts Reel. VWMLa.016



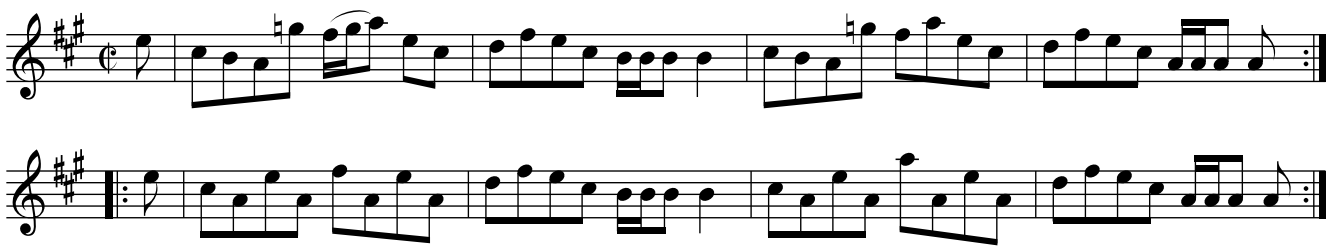
Irish Vauxhall. VWMLa.017



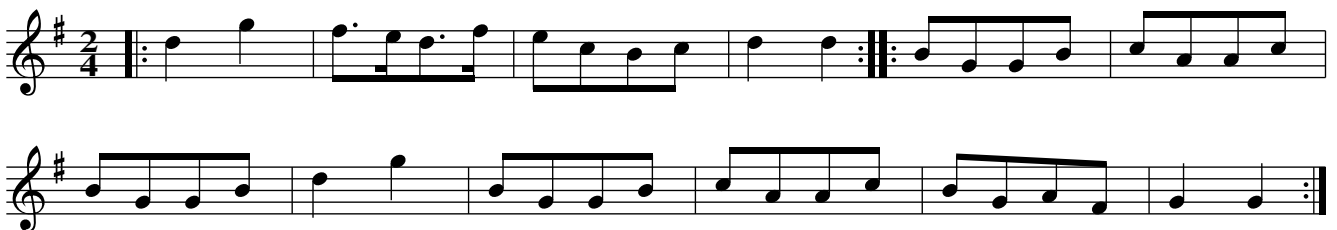
Eight Men of Moyder. VWMLa.018  
Eight Men/Maids of Moidart, aka. VWMLa.018



Bonny Lad. VWMLa.019  
Because He Was a Bonnie Lad, aka. VWMLa.019



New Daniel Cooper. VWMLa.020



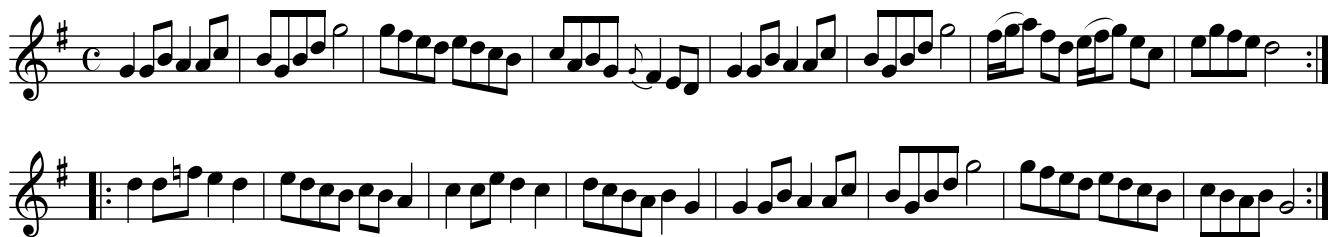
Tom Jones. VWMLa.021



Patties Whim. VWMLa.022



Successfull Campain. VWMLa.023



Maid of Bath. VWMLa.024



Quaker. VWMLa.025



Le Bon Gow. VWMLa.026

The Taste. VWMLa.026



Lord Holderness Rant. VWMLa.027

Musical score for 'Lord Holderness Rant. VWMLa.027'. The score consists of four staves of music in treble clef, key of D major (one sharp), and common time (C). The first staff begins with a treble clef, a key signature of one sharp, and a common time signature. The music is written in a single melodic line. The second and third staves begin with repeat signs (double bar lines with dots on either side). The fourth staff also begins with a repeat sign. The piece concludes with a double bar line and repeat dots.

Norfolk Freeholders. VWMLa.028

Musical score for 'Norfolk Freeholders. VWMLa.028'. The score consists of a single staff of music in treble clef, key of D major (one sharp), and 6/8 time. The music is written in a single melodic line. It begins with a treble clef, a key signature of one sharp, and a 6/8 time signature. The piece concludes with a double bar line and repeat dots.

Drops of Brandy. VWMLa.029

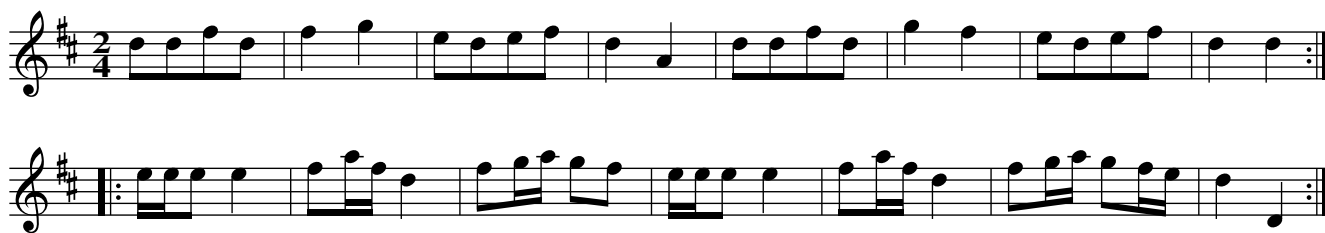
Musical score for 'Drops of Brandy. VWMLa.029'. The score consists of two staves of music in treble clef, key of D major (one sharp), and 3/8 time. The first staff begins with a treble clef, a key signature of one sharp, and a 3/8 time signature. The second staff begins with a repeat sign. The piece concludes with a double bar line and repeat dots.

Chamberlain Election. VWMLa.030

Musical score for 'Chamberlain Election. VWMLa.030'. The score consists of two staves of music in treble clef, key of D major (one sharp), and 6/8 time. The first staff begins with a treble clef, a key signature of one sharp, and a 6/8 time signature. The second staff begins with a repeat sign. The piece concludes with a double bar line and repeat dots.



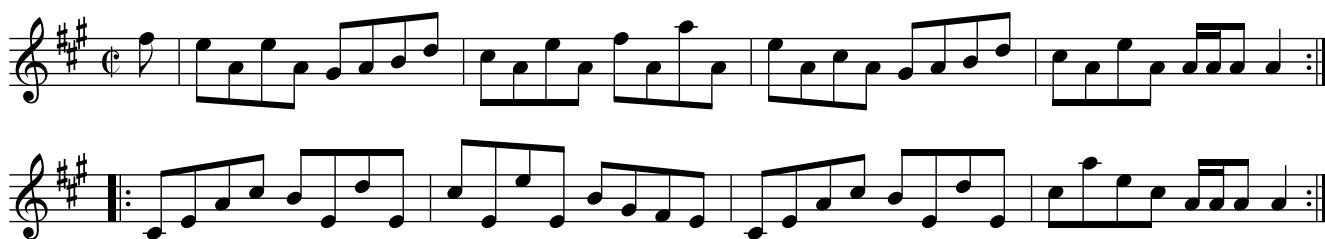
Something New. VWMLa.031



Brandy Bottle. VWMLa.032



Trip to Galloway. VWMLa.033



I'll Never the Laddie. VWMLa.034  
Jack, I'll Never Leave Thee, aka. VWMLa.034



## Trip to King Street. VWMLa.035

Musical score for 'Trip to King Street. VWMLa.035'. The score consists of four staves of music in treble clef, common time (C). The first staff begins with a repeat sign. The second staff ends with a repeat sign. The third and fourth staves also contain musical notation with repeat signs at the beginning and end of the piece.

## Just a Going. VWMLa.036

Musical score for 'Just a Going. VWMLa.036'. The score consists of two staves of music in treble clef, common time (C). The key signature has one sharp (F#). The first staff begins with a repeat sign. The second staff also contains musical notation with a repeat sign at the end of the piece.

Lord Strange. VWMLa.037

The image displays a musical score for the piece "Lord Strange" (VWMLa.037). The score is written in G major (one sharp) and 3/2 time. It consists of 14 staves of music. The notation includes various rhythmic values such as quarter, eighth, and sixteenth notes, as well as rests and bar lines. A double bar line with repeat dots is used to indicate repeated sections. A specific performance instruction, "sic", is written above the staff in the seventh measure of the eighth staff. The score concludes with a final double bar line and repeat dots.

Trip to Oatland. VWMLa.038

Musical notation for 'Trip to Oatland. VWMLa.038'. It consists of two staves of music in 6/8 time. The first staff begins with a treble clef, a key signature of one flat (Bb), and a 6/8 time signature. The melody is composed of eighth and sixteenth notes. The second staff continues the melody, starting with a repeat sign and a fermata over the first two notes.

Wilks Releasment. VWMLa.039

Musical notation for 'Wilks Releasment. VWMLa.039'. It consists of three staves of music in common time (C). The key signature is one sharp (F#). The first staff begins with a treble clef. The melody is primarily composed of eighth and sixteenth notes. The second and third staves continue the melody, with the second staff starting with a repeat sign and a fermata.

Smiling Dickey. VWMLa.040

Musical notation for 'Smiling Dickey. VWMLa.040'. It consists of four staves of music in common time (C). The key signature is two sharps (F# and C#). The first staff begins with a treble clef. The melody is composed of eighth and sixteenth notes. The second staff features a triplet of eighth notes. The third and fourth staves continue the melody, with the third staff starting with a repeat sign and a fermata.

Dusty Miller. VWMLa.041

Musical notation for 'Dusty Miller. VWMLa.041'. It consists of a single staff of music in 3/2 time. The key signature is two sharps (F# and C#). The melody is composed of eighth and sixteenth notes. The piece begins with a repeat sign and a fermata.

Free Mason. VWMLa.042

Two staves of musical notation for 'Free Mason. VWMLa.042'. The first staff is in treble clef, key of D major (two sharps), and 3/8 time. The second staff is in bass clef, key of D major, and 3/8 time. Both staves feature a melodic line with eighth and sixteenth notes, and a rhythmic accompaniment of eighth notes.

Halmires Allemande. VWMLa.043

Four staves of musical notation for 'Halmires Allemande. VWMLa.043'. The first staff is in treble clef, key of D major (two sharps), and 2/4 time. The second staff is in bass clef, key of D major, and 2/4 time. The third staff is in treble clef, key of D major, and 2/4 time, with a note marked 'e in MS'. The fourth staff is in bass clef, key of D major, and 2/4 time. The music consists of a melodic line and a rhythmic accompaniment of eighth notes.

West's Hornpipe. VWMLa.044  
Morpeth Rant, aka. VWMLa.044

Five staves of musical notation for 'West's Hornpipe. VWMLa.044' and 'Morpeth Rant, aka. VWMLa.044'. The first staff is in treble clef, key of B-flat major (two flats), and common time. The second staff is in bass clef, key of B-flat major, and common time. The third staff is in treble clef, key of B-flat major, and common time. The fourth staff is in bass clef, key of B-flat major, and common time. The fifth staff is in treble clef, key of B-flat major, and common time. The music features a melodic line and a rhythmic accompaniment of eighth notes, with some staves including a second ending marked with a '2'.

## Brave Protect the Fair. VWMLa.045

Musical score for 'Brave Protect the Fair. VWMLa.045'. The score consists of three staves of music in common time (C). The first staff features a melody with eighth and sixteenth notes. The second and third staves provide accompaniment with eighth and sixteenth notes, including some triplet-like patterns.

## Now or Never. VWMLa.046

Musical score for 'Now or Never. VWMLa.046'. The score consists of two staves of music in common time (C) with a key signature of one sharp (F#). The melody in the first staff is primarily eighth notes, while the second staff provides accompaniment with eighth notes.

## Lady Villiers Delight. VWMLa.047

Musical score for 'Lady Villiers Delight. VWMLa.047'. The score consists of two staves of music in 3/8 time with a key signature of one flat (Bb). The first staff contains a melody with eighth notes and triplets, indicated by a '3' below the notes. The second staff provides accompaniment with eighth notes and triplets.

## Cammaronians Rant. VWMLa.048

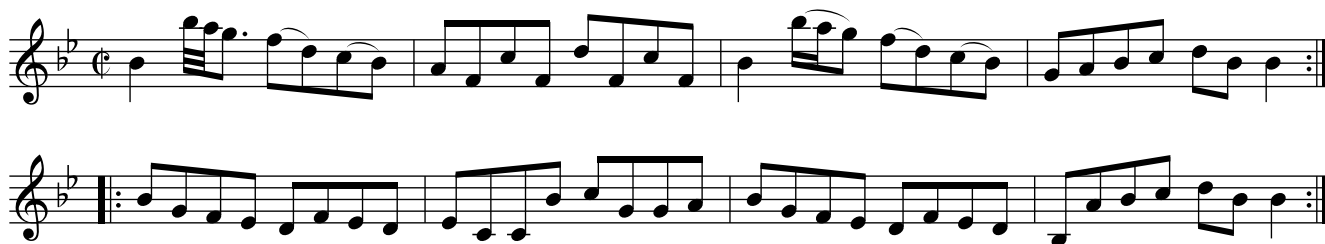
Musical score for 'Cammaronians Rant. VWMLa.048'. The score consists of three staves of music in common time (C) with a key signature of one flat (Bb). The first staff features a melody with eighth notes and sixteenth notes. The second and third staves provide accompaniment with eighth notes. The third staff concludes with a double bar line and the instruction 'D.C.' (Da Capo).

Starr. VWMLa.049



Mrs. Charters Reel. VWMLa.050

Cumberland Reel, aka. VWMLa.050



Grant Quick Step. VWMLa.051

The Recruit, aka. VWMLa.051

Chester Castle, aka. VWMLa.051

Grant's Rant, aka. VWMLa.051

The New Hornpipe, aka. VWMLa.051



The Rose. VWMLa.052



## 20 of May. VWMLa.049

Twentieth of May

Musical score for '20 of May. VWMLa.049' in G minor (one flat) and 6/8 time. The score consists of four staves of music. The first staff begins with a treble clef and a common time signature. The melody is composed of eighth and quarter notes. The second staff continues the melody. The third staff features a repeat sign at the beginning. The fourth staff concludes the piece with a double bar line and repeat dots.

## Waterman. VWMLa.054

Constant Billy, aka. VWMLa.054

Young Parker, aka. VWMLa.054

Musical score for 'Waterman. VWMLa.054' in D major (two sharps) and 6/8 time. The score consists of three staves of music. The first staff begins with a treble clef and a common time signature. The melody is composed of eighth and quarter notes. The second staff continues the melody. The third staff concludes the piece with a double bar line and repeat dots.

## Blackney Dance. VWMLa.055

Musical score for 'Blackney Dance. VWMLa.055' in C major (no sharps or flats) and 6/8 time. The score consists of three staves of music. The first staff begins with a treble clef and a common time signature. The melody is composed of eighth and quarter notes. The second staff continues the melody. The third staff concludes the piece with a double bar line and repeat dots.



Sister Sarah. VWMLa.056

Musical score for 'Sister Sarah' (VWMLa.056). The score consists of four staves of music in treble clef, key of D major (one sharp), and 6/8 time. The first staff begins with a treble clef, a key signature of one sharp, and a 6/8 time signature. The second and third staves continue the melody. The fourth staff begins with a repeat sign and ends with a double bar line and repeat dots.

Hunting Squeril (sic). VWMLa.057

Hunt The Squirl, aka. VWMLa.057

Musical score for 'Hunting Squeril (sic)' (VWMLa.057). The score consists of two staves of music in treble clef, key of D major (one sharp), and 6/8 time. The first staff begins with a treble clef, a key signature of one sharp, and a 6/8 time signature. The second staff continues the melody and ends with a double bar line and repeat dots.

Jack of the Green. VWMLa.058

Musical score for 'Jack of the Green' (VWMLa.058). The score consists of two staves of music in treble clef, key of D major (one sharp), and 9/8 time. The first staff begins with a treble clef, a key signature of one sharp, and a 9/8 time signature, with the annotation '9/8 preferable' above it. The second staff continues the melody and ends with a double bar line and repeat dots.

Dainty Davy. VWMLa.059

Musical score for 'Dainty Davy' (VWMLa.059). The score consists of two staves of music in treble clef, key of B-flat major (two flats), and common time (C). The first staff begins with a treble clef, a key signature of two flats, and a common time signature, with the annotation 'qu' above it. The second staff continues the melody and ends with a double bar line and repeat dots. Below the second staff is the annotation '2 flats in ms'.

## Kentish Krickiters. VWMLa.060

Musical score for Kentish Krickiters. VWMLa.060. The score consists of two staves of music in G major (one sharp) and common time. The melody is written on the top staff, and the accompaniment is on the bottom staff. The piece features a mix of eighth and sixteenth notes, with a trill-like flourish in the second measure of the melody.

## Bird Catchers. VWMLa.061

Musical score for Bird Catchers. VWMLa.061. The score consists of two staves of music in G major (one sharp) and 2/4 time. The melody is written on the top staff, and the accompaniment is on the bottom staff. The piece features a mix of eighth and sixteenth notes, with a trill-like flourish in the second measure of the melody. The time signature is 2/4.

## Old Rodger. VWMLa.062

Sir Roger De Coverley, aka. VWMLa.062

Musical score for Old Rodger. VWMLa.062. The score consists of three staves of music in G major (one sharp) and 3/8 time. The melody is written on the top staff, and the accompaniment is on the bottom two staves. The piece features a mix of eighth and sixteenth notes, with a trill-like flourish in the second measure of the melody. The time signature is 3/8.

## Irish Lilt. VWMLa.063

Musical score for Irish Lilt. VWMLa.063. The score consists of two staves of music in G major (one sharp) and 2/4 time. The melody is written on the top staff, and the accompaniment is on the bottom staff. The piece features a mix of eighth and sixteenth notes, with a trill-like flourish in the second measure of the melody. The time signature is 2/4.

Prince Royal. VWMLa.064

Princess Royal, aka. VWMLa.064

Musical score for Prince Royal, VWMLa.064. The score consists of three staves of music in G minor (one flat) and common time (C). The first staff is the melody, the second is the bass line, and the third is a figured bass line. The piece features a variety of rhythmic patterns, including eighth and sixteenth notes, and rests.

Pippin. VWMLa.065

Musical score for Pippin, VWMLa.065. The score consists of two staves of music in G minor (one flat) and common time (C). The first staff is the melody, and the second is the bass line. The piece features a variety of rhythmic patterns, including eighth and sixteenth notes, and rests.

Slingsbys Allemand. VWMLa.066

Musical score for Slingsbys Allemand, VWMLa.066. The score consists of two staves of music in G major (two sharps) and 2/4 time. The first staff is the melody, and the second is the bass line. The piece features a variety of rhythmic patterns, including eighth and sixteenth notes, and rests.

Lango Lee. VWMLa.067  
Banks of the Dee, aka. VWMLa.067

Musical score for Lango Lee, VWMLa.067. The score consists of two staves of music in G major (two sharps) and 6/8 time. The first staff is the melody, and the second is the bass line. The piece features a variety of rhythmic patterns, including eighth and sixteenth notes, and rests.

## School for Lovers. VWMLa.068

Musical score for 'School for Lovers. VWMLa.068'. The score consists of three staves of music in G major (one sharp) and 6/8 time. The first staff begins with a treble clef and a key signature of one sharp. The second and third staves begin with repeat signs. The music features a mix of eighth and sixteenth notes, with some triplet-like patterns.

## Coassac Dance. VWMLa.069

Cossack Dance

Musical score for 'Coassac Dance. VWMLa.069'. The score consists of five staves of music in G major (two sharps) and 2/4 time. The first staff begins with a treble clef and a key signature of two sharps. The second and third staves begin with repeat signs. The music is characterized by a fast, rhythmic pattern of eighth and sixteenth notes, typical of a dance tune.

## De'el Stick the Minister. VWMLa.070

Musical score for 'De'el Stick the Minister. VWMLa.070'. The score consists of two staves of music in G major (one sharp) and common time (C). The first staff begins with a treble clef and a key signature of one sharp. The second staff begins with a repeat sign. The music features a mix of eighth and sixteenth notes, with some triplet-like patterns.

Miss Gunnings Delight. VWMLa.071

Musical score for Miss Gunnings Delight. VWMLa.071. The score is written in treble clef with a key signature of two sharps (F# and C#) and a common time signature (C). It consists of three staves. The first staff begins with a treble clef, a key signature of two sharps, and a common time signature. The melody features eighth and sixteenth notes, with a fermata over the final note. The second staff continues the melody with similar rhythmic patterns. The third staff features a more active bass line with frequent eighth notes and some sixteenth notes, including several fermatas over specific notes.

Vertigo. VWMLa.072

Musical score for Vertigo. VWMLa.072. The score is written in treble clef with a key signature of one sharp (F#) and a 6/8 time signature. It consists of three staves. The first staff begins with a treble clef, a key signature of one sharp, and a 6/8 time signature. The melody is characterized by a steady eighth-note pattern. The second staff continues the melody with similar rhythmic patterns. The third staff features a more active bass line with frequent eighth notes and some sixteenth notes, including several fermatas over specific notes.

Merry Waggoner. VWMLa.073  
Dearest Dicky, aka. VWMLa.073

Musical score for Merry Waggoner. VWMLa.073. The score is written in treble clef with a key signature of two sharps (F# and C#) and a 6/8 time signature. It consists of three staves. The first staff begins with a treble clef, a key signature of two sharps, and a 6/8 time signature. The melody features eighth and sixteenth notes. The second staff continues the melody with similar rhythmic patterns. The third staff features a more active bass line with frequent eighth notes and some sixteenth notes, including several fermatas over specific notes.

Hob or me Nob. VWMLa.074  
Campbells Are Coming, aka. VWMLa.074

Musical score for 'Hob or me Nob. VWMLa.074' in G major, 3/8 time. The score consists of four staves of music. The first staff begins with a treble clef, a key signature of one sharp (F#), and a 3/8 time signature. The melody is written in a single line. The second and third staves continue the melody with various rhythmic patterns and phrasing. The fourth staff concludes the piece with a double bar line and repeat dots.

De'el take the Hindmost. VWMLa.075

Musical score for 'De'el take the Hindmost. VWMLa.075' in G major, 2/4 time. The score consists of two staves of music. The first staff begins with a treble clef, a key signature of one sharp (F#), and a 2/4 time signature. The melody features a prominent eighth-note pattern. The second staff continues the melody and ends with a double bar line and repeat dots.

Green Sleeves. VWMLa.076

Musical score for 'Green Sleeves. VWMLa.076' in G major, 6/8 time. The score consists of two staves of music. The first staff begins with a treble clef, a key signature of one sharp (F#), and a 6/8 time signature. The melody is written in a single line. The second staff continues the melody and ends with a double bar line and repeat dots. A note in the second staff is marked with a sharp sign (#).

2 flats in MS

Four Seasons. VWMLa.077

ie drone on low A

The musical score for 'Four Seasons' (VWMLa.077) consists of three staves. The first staff begins with a treble clef, a key signature of one sharp (F#), and a 3/8 time signature. It contains a melodic line with a repeat sign and a double bar line. The second staff features a drone on low A, indicated by the text 'ie drone on low A' above the staff, with a treble clef and a key signature of one sharp. The third staff continues the melody with a treble clef, a key signature of one sharp, and includes first and second endings marked with '1' and '2' above the staff.

Sun Beams. VWMLa.078

The musical score for 'Sun Beams' (VWMLa.078) consists of three staves. The first staff has a treble clef, a key signature of one flat (Bb), and a 3/8 time signature. The second staff continues the melody with a treble clef, a key signature of one flat, and includes a fermata over the final note. The third staff continues the melody with a treble clef and a key signature of one flat.

Drought. VWMLa.079  
The Lasses Liking, aka(?). VWMLa.079

The musical score for 'Drought' (VWMLa.079) consists of two staves. The first staff has a treble clef, a key signature of one flat (Bb), and a 3/8 time signature. The second staff continues the melody with a treble clef and a key signature of one flat.

## Paddy Whack. VWMLa.080

Musical score for 'Paddy Whack' (VWMLa.080). The score is written in treble clef, G major, and 6/8 time. It consists of four staves of music. The first staff begins with a treble clef, a key signature of one sharp (F#), and a 6/8 time signature. The melody is characterized by eighth-note patterns and a final flourish. The second and fourth staves end with double bar lines and repeat dots. The third staff begins with a repeat sign.

## Butter'd Pease. VWMLa.081

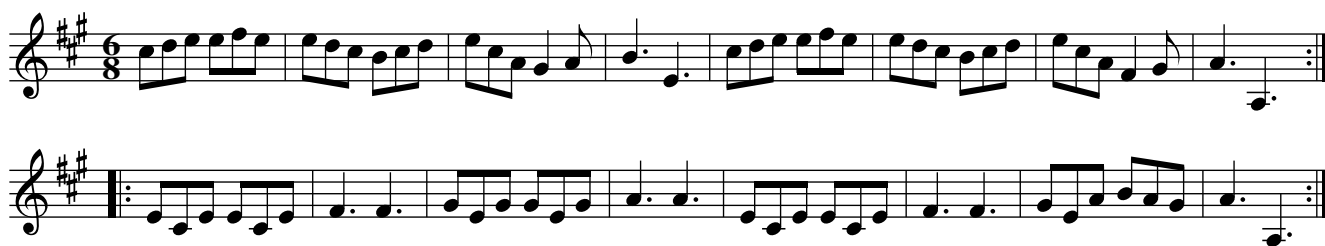
Musical score for 'Butter'd Pease' (VWMLa.081). The score is written in treble clef, G major, and common time. It consists of two staves of music. The first staff begins with a treble clef, a key signature of one sharp (F#), and a common time signature. The melody features a mix of quarter and eighth notes. The second staff begins with a repeat sign and ends with a double bar line and repeat dots.

## Flowers of Edinburgh. VWMLa.082

Musical score for 'Flowers of Edinburgh' (VWMLa.082). The score is written in treble clef, G major, and common time. It consists of four staves of music. The first staff begins with a treble clef, a key signature of one sharp (F#), and a common time signature. The melody is composed of eighth and sixteenth notes. The second and fourth staves end with double bar lines and repeat dots. The third staff begins with a repeat sign.



Major Sturgeon. VWMLa.083



Priest in his Boots. VWMLa.084



Lady Harriots Reel. VWMLa.085



## Lads of Dance. VWMLa.086

Lads of Dunse, aka. VWMLa.086

Musical score for 'Lads of Dance' (VWMLa.086). The score consists of four staves of music in treble clef, key of D major (two sharps), and 3/8 time. The melody is characterized by eighth and sixteenth notes, with some triplet-like patterns. The first staff begins with a treble clef, a key signature of two sharps, and a 3/8 time signature. The piece concludes with a double bar line and repeat dots.

## Lilly. VWMLa.087

Musical score for 'Lilly' (VWMLa.087). The score consists of three staves of music in treble clef, key of D major (two sharps), and common time (C). The melody features eighth and sixteenth notes, with several instances of doublets (indicated by a '2' above the notes) and slurs. The first staff begins with a treble clef, a key signature of two sharps, and a common time signature. The piece concludes with a double bar line and repeat dots.

## Shutters Hornpipe. VWMLa.088

Musical score for 'Shutters Hornpipe' (VWMLa.088). The score consists of four staves of music in treble clef, key of D major (two sharps), and common time (C). The melody is primarily composed of eighth and sixteenth notes, with some slurs and ties. The first staff begins with a treble clef, a key signature of two sharps, and a common time signature. The piece concludes with a double bar line and repeat dots.

Jack Stewarts Reel. VWMLa.089  
Highlandman Kissed His Mother, aka. VWMLa.089

Two staves of musical notation for 'Jack Stewarts Reel'. The first staff contains the first two measures, and the second staff contains the next two measures. The piece ends with a double bar line and repeat dots.

Miss Bakers Hornpipe. VWMLa.090

Three staves of musical notation for 'Miss Bakers Hornpipe'. The first staff contains the first two measures, the second staff contains the next two measures, and the third staff contains the final two measures. There are triplets marked with a '3' in several places.

Cream Pot. VWMLa.091

Three staves of musical notation for 'Cream Pot'. The first staff contains the first two measures, the second staff contains the next two measures, and the third staff contains the final two measures.

Mantua Makers Frolic. VWMLa.092

Musical score for 'Mantua Makers Frolic. VWMLa.092'. The score consists of three staves of music in G minor (one flat) and 2/4 time. The first staff begins with a repeat sign and contains two triplet markings (indicated by a '3' above the notes). The second and third staves continue the melody with various rhythmic patterns and repeat signs at the end.

Welcome Here Again. VWMLa.093

Musical score for 'Welcome Here Again. VWMLa.093'. The score consists of two staves of music in G major (one sharp) and common time (C). The first staff begins with a repeat sign and features a series of eighth and sixteenth notes. The second staff continues the melody with similar rhythmic patterns and ends with a repeat sign.

Wild Irish Man. VWMLa.094

Musical score for 'Wild Irish Man. VWMLa.094'. The score consists of two staves of music in G major (one sharp) and 6/8 time. The first staff begins with a repeat sign and contains a series of eighth notes. The second staff continues the melody with eighth and sixteenth notes, ending with a repeat sign.

Harrowgate Spaw. VWMLa.095

Musical score for 'Harrowgate Spaw. VWMLa.095'. The score consists of two staves of music in G minor (one flat) and 2/4 time. The first staff begins with a repeat sign and contains eighth and sixteenth notes. The second staff continues the melody with eighth and sixteenth notes, ending with a repeat sign.

Over the Hills and Far Away. VWMLa.096

Two staves of musical notation for the piece 'Over the Hills and Far Away'. The music is written in treble clef with a key signature of one sharp (F#) and a time signature of 2/4. The melody is characterized by eighth and sixteenth notes, with a repeat sign at the end of the first staff.

Down the Banks. VWMLa.097

Two staves of musical notation for the piece 'Down the Banks'. The music is written in treble clef with a key signature of one sharp (F#) and a common time signature (C). The melody consists of quarter and eighth notes. A note in the first staff is marked with a sharp sign and the text '1 sharp in ms'. The piece concludes with a repeat sign.

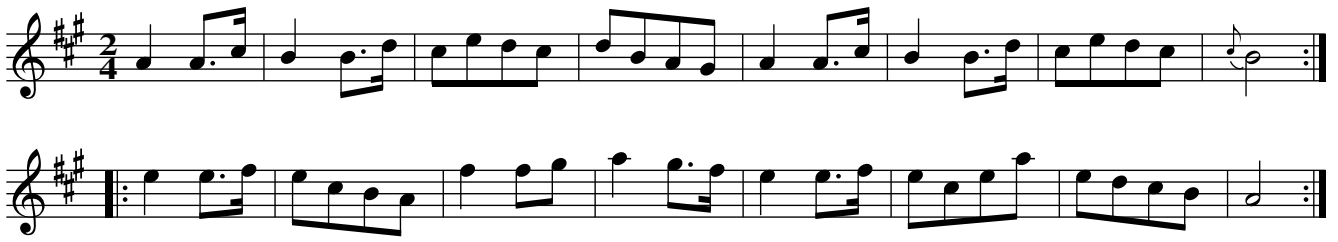
Crook'd Legs. VWMLa.098

Three staves of musical notation for the piece 'Crook'd Legs'. The music is written in treble clef with a key signature of one sharp (F#) and a time signature of 6/8. The melody is composed of eighth and sixteenth notes. The first staff ends with a repeat sign, and the piece concludes with a final double bar line.

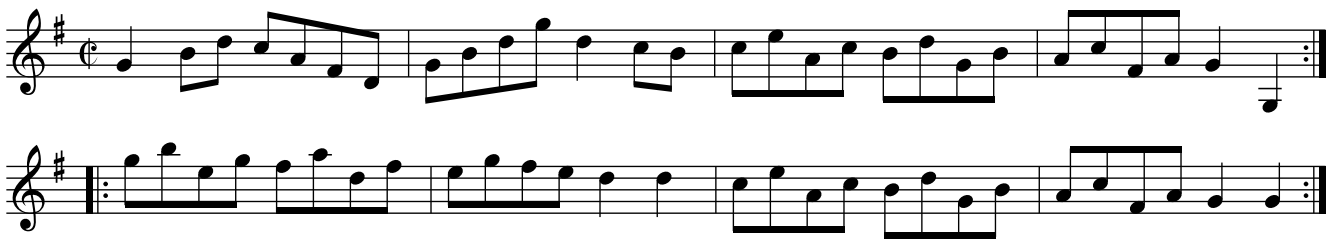
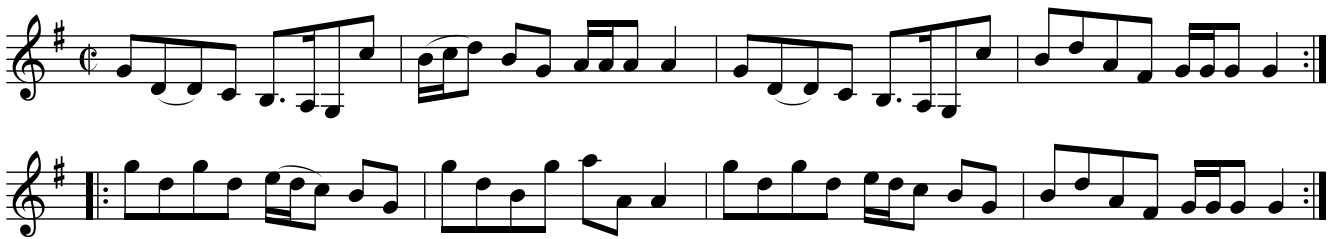
Horse and Away to New Market. VWMLa.099

Four staves of musical notation for the piece 'Horse and Away to New Market'. The music is written in treble clef with a key signature of three sharps (F#, C#, G#) and a time signature of 6/4. The melody is primarily composed of quarter and half notes. The first staff ends with a repeat sign, and the piece concludes with a final double bar line.

## Lincolnshire Lads. VWMLa.100



## Trip to Paris. VWMLa.101

Suden Thought. VWMLa.102  
Sudden Thought

## Roman Dance. VWMLa.103



Country Bumkin. VWMLa.104

Musical score for 'Country Bumkin. VWMLa.104'. The score is written in treble clef with a key signature of one flat (B-flat) and a time signature of 6/4. It consists of four staves. The first staff begins with a whole note B-flat, followed by a series of eighth and quarter notes. The second staff continues the melody with eighth and quarter notes, ending with a double bar line. The third and fourth staves provide a harmonic accompaniment, primarily using quarter and eighth notes, with a repeat sign at the beginning of the third staff.

Bon Ton. VWMLa.105

Musical score for 'Bon Ton. VWMLa.105'. The score is written in treble clef with a key signature of one sharp (F#) and a time signature of 6/8. It consists of two staves. The first staff begins with a series of eighth and quarter notes, including a key signature change to one sharp. The second staff continues the melody with eighth and quarter notes, ending with a double bar line.

Hey to the Camp. VWMLa.106

Musical score for 'Hey to the Camp. VWMLa.106'. The score is written in treble clef with a key signature of one flat (B-flat) and a time signature of 6/8. It consists of four staves. The first staff begins with a series of eighth and quarter notes. The second and third staves continue the melody with eighth and quarter notes, including a repeat sign at the beginning of the third staff. The fourth staff provides a harmonic accompaniment with eighth and quarter notes.

## Hessian Dance. VWMLa.107

Three staves of musical notation for the Hessian Dance. The first staff is in 3/8 time, the second in 3/4, and the third in 3/8. All are in the key of D major. Each staff begins with a repeat sign and ends with a double bar line and repeat dots.

I leave it to the reader to accomodate the first note of the C music.

## Roman Reel. VWMLa.108

Two staves of musical notation for the Roman Reel. Both staves are in 2/4 time and the key of D major. Each staff begins with a repeat sign and ends with a double bar line and repeat dots.

## Lady Stewarts Reel. VWMLa.109

Two staves of musical notation for Lady Stewarts Reel. The first staff is in 6/8 time, and the second is in 3/4 time. Both are in the key of D major. Each staff begins with a repeat sign and ends with a double bar line and repeat dots.

## Irish Gimblet. VWMLa.110

Two staves of musical notation for the Irish Gimblet. The first staff is in 6/8 time, and the second is in 3/4 time. Both are in the key of D major. Each staff begins with a repeat sign and ends with a double bar line and repeat dots.

More properly in 9/8



St. Brides Bells. VWMLa.111



New Coassac Dance. VWMLa.112



Trip to the Camp. VWMLa.113

Trip to Manchester. VWMLa.113



## Dumfries House. VWMLa.114

Musical score for Dumfries House. VWMLa.114, consisting of four staves of music in G minor (one flat) and 6/8 time. The first staff begins with a treble clef and a 6/8 time signature. The music features a mix of eighth and sixteenth notes, with some rests. The second and fourth staves end with double bar lines and repeat dots. The third staff begins with a repeat sign.

## La Nouvelle Hollandoise. VWMLa.115

Chain Cotillion, aka. VWMLa.115

Musical score for La Nouvelle Hollandoise. VWMLa.115, consisting of three staves of music in G major (one sharp) and 6/8 time. The first staff begins with a treble clef and a 6/8 time signature. The music features a mix of eighth and sixteenth notes, with some rests. The second and third staves end with double bar lines and repeat dots. The second staff begins with a repeat sign.

## Rural Felicity. VWMLa.116

Haste to the Wedding, aka. VWMLa.116

Musical score for Rural Felicity. VWMLa.116, consisting of two staves of music in G major (one sharp) and 6/8 time. The first staff begins with a treble clef and a 6/8 time signature. The music features a mix of eighth and sixteenth notes, with some rests. The second staff begins with a repeat sign and ends with a double bar line and repeat dots.

Better known as Haste to the Wedding.

Mrs. Hoberts Allemande. VWMLa.117

Mrs. Hoberts Allemande. VWMLa.117

Jacks Alive. VWMLa.118

Jacks Alive. VWMLa.118

Scotch Contention. VWMLa.119

Greensleeves, aka. VWMLa.119

Scotch Contention. VWMLa.119  
Greensleeves, aka. VWMLa.119

## Bevis Mount. VWMLa.120

Musical score for Bevis Mount. VWMLa.120, featuring four staves of music in G major and 6/8 time. The first staff is the melody, the second and third are accompaniment, and the fourth is a bass line with chords.

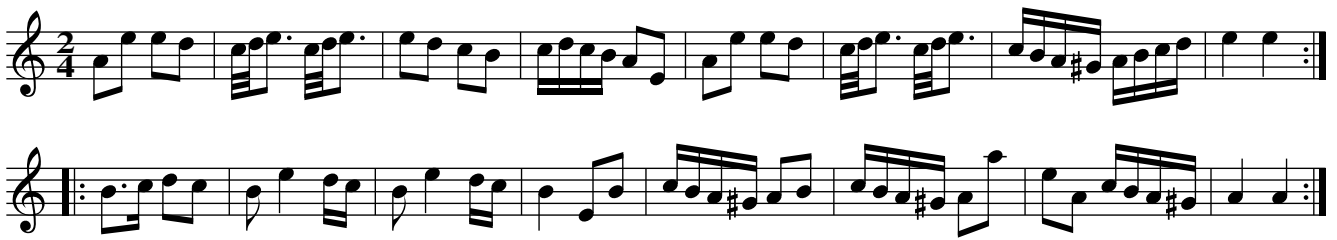
Duenna. VWMLa.121  
 Lilliberlero, aka. VWMLa.121

Musical score for Duenna. VWMLa.121, featuring three staves of music in B minor and 6/8 time. The first staff is the melody, the second and third are accompaniment.

## Heyty Cooper. VWMLa.122

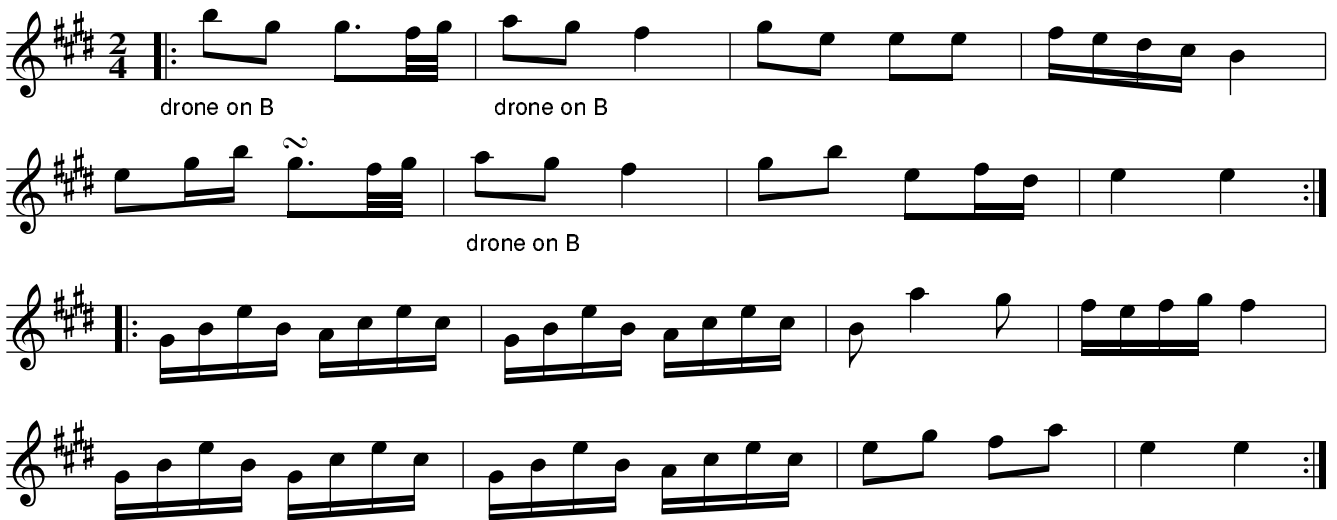
Musical score for Heyty Cooper. VWMLa.122, featuring two staves of music in G major and 6/8 time. The first staff is the melody, the second is accompaniment.

La Tambourine. VWMLa.123



La Ball Elegante. VWMLa.124

Le Fete De Village, aka. VWMLa.124



Brick Makers. VWMLa.125



The Lockit. VWMLa.126

Musical notation for 'The Lockit' (VWMLa.126). It consists of two staves of music in G major (one sharp) and 2/4 time. The first staff begins with a treble clef, a key signature of one sharp (F#), and a 2/4 time signature. The melody features a mix of eighth and sixteenth notes, with a prominent triplet of eighth notes in the second measure. The second staff continues the melody, ending with a double bar line and repeat dots.

Wigginton Wind Mill. VWMLa.127

Musical notation for 'Wigginton Wind Mill' (VWMLa.127). It consists of four staves of music in G major (one sharp) and 2/4 time. The first staff begins with a treble clef, a key signature of one sharp (F#), and a 2/4 time signature. The melody is characterized by a continuous stream of sixteenth notes, creating a rhythmic and melodic pattern. The second and third staves continue this pattern, while the fourth staff concludes the piece with a double bar line and repeat dots.

Wednesday Night. VWMLa.128

Musical notation for 'Wednesday Night' (VWMLa.128). It consists of two staves of music in G major (one sharp) and common time (C). The first staff begins with a treble clef, a key signature of one sharp (F#), and a common time signature. The melody is composed of quarter and eighth notes. The second staff continues the melody, ending with a double bar line and repeat dots.

Who's afraid. VWMLa.129

Musical notation for 'Who's afraid' (VWMLa.129). It consists of three staves of music in G major (one sharp) and 6/8 time. The first staff begins with a treble clef, a key signature of one sharp (F#), and a 6/8 time signature. The melody is primarily composed of quarter notes and eighth notes. The second and third staves continue the melody, ending with a double bar line and repeat dots.

La Fat da Village. VWMLa.130

Two staves of musical notation for 'La Fat da Village. VWMLa.130'. The music is in treble clef, key of D major (two sharps), and 2/4 time. The first staff contains a single melodic line. The second staff contains a single melodic line with a repeat sign at the beginning.

Neapolitan Dance. VWMLa.131

Five staves of musical notation for 'Neapolitan Dance. VWMLa.131'. The music is in treble clef, key of D major (two sharps), and 2/4 time. The first staff is a single melodic line. The second and third staves are single melodic lines with repeat signs. The fourth and fifth staves are single melodic lines with dynamic markings 'P' (piano) and 'F' (forte) respectively, and repeat signs.

Dance. VWMLa.132

Three staves of musical notation for 'Dance. VWMLa.132'. The music is in treble clef, key of B minor (two flats), and 2/4 time. The first staff is a single melodic line. The second and third staves are single melodic lines with repeat signs.

## Elopement. VWMLa.129

Musical score for 'Elopement. VWMLa.129'. The score consists of three staves. The first staff is a single melodic line in C major, 4/4 time, starting with a treble clef and a common time signature. The second staff is a bass line in C major, 4/4 time, starting with a bass clef and a common time signature. The third staff is a second melodic line in C major, 4/4 time, starting with a treble clef and a common time signature. The piece concludes with a double bar line and repeat dots.

## The Favourite. VWMLa.134

Musical score for 'The Favourite. VWMLa.134'. The score consists of four staves. The first staff is a single melodic line in D major, 6/8 time, starting with a treble clef and a 6/8 time signature. The second staff is a second melodic line in D major, 6/8 time, starting with a treble clef and a 6/8 time signature. The third staff is a bass line in D major, 6/8 time, starting with a bass clef and a 6/8 time signature. The fourth staff is a second melodic line in D major, 6/8 time, starting with a treble clef and a 6/8 time signature. The piece concludes with a double bar line and repeat dots, and the instruction 'D.C.' is written above the final measure.

## Charles Street Baulk. VWMLa.135

Musical score for 'Charles Street Baulk. VWMLa.135'. The score consists of two staves. The first staff is a single melodic line in D major, C time, starting with a treble clef and a common time signature. The second staff is a bass line in D major, C time, starting with a bass clef and a common time signature. The piece concludes with a double bar line and repeat dots.



Bonny Kate of Aberdeen. VWMLa.136

Musical score for 'Bonny Kate of Aberdeen' (VWMLa.136). The score is written in treble clef with a key signature of one sharp (F#) and a common time signature (C). It consists of four staves of music. The first staff begins with a treble clef, a sharp sign, and a common time signature. The melody is primarily eighth and sixteenth notes. The second staff continues the melody with some sixteenth-note runs. The third staff features a repeat sign at the beginning. The fourth staff concludes the piece with a double bar line and repeat dots.

Trip to Clumber. VWMLa.137

Musical score for 'Trip to Clumber' (VWMLa.137). The score is written in treble clef with a key signature of one flat (Bb) and a 2/4 time signature. It consists of three staves of music. The first staff begins with a treble clef, a flat sign, and a 2/4 time signature. The melody is primarily eighth and sixteenth notes. The second staff features a repeat sign at the beginning. The third staff concludes the piece with a double bar line and repeat dots.

La Bergere. VWMLa.138

Musical score for 'La Bergere' (VWMLa.138). The score is written in treble clef with a key signature of two sharps (F# and C#) and a 3/8 time signature. It consists of four staves of music. The first staff begins with a treble clef, two sharp signs, and a 3/8 time signature. The melody is primarily eighth and sixteenth notes. The second staff continues the melody with some sixteenth-note runs. The third staff features a repeat sign at the beginning. The fourth staff concludes the piece with a double bar line and repeat dots.

Feathers. VWMLa.139

Musical score for 'Feathers. VWMLa.139' in G minor, 6/8 time. The score consists of four staves. The first staff begins with a piano (P) dynamic. The second staff contains dynamics for forte (F) and piano (P). The third staff also contains dynamics for forte (F) and piano (P). The fourth staff features first and second endings, indicated by '1' and '2' above the staff.

La Nouvelle. VWMLa.140

Musical score for 'La Nouvelle. VWMLa.140' in G major, 6/8 time. The score consists of two staves. The melody is characterized by eighth-note patterns and rests.

Cassino. VWMLa.141

Musical score for 'Cassino. VWMLa.141' in A major, 6/8 time. The score consists of two staves. The second staff concludes with the instruction 'D.C.' (Da Capo).

Trip to London. VWMLa.142

Musical score for 'Trip to London. VWMLa.142' in A major, 6/8 time. The score consists of two staves. The second staff features two trills, indicated by a '2' above the notes.

Prince Condee. VWMLa.143



Musical score for Prince Condee, VWMLa.143. The score consists of four staves of music in G major (one flat) and 6/8 time. The first staff begins with a treble clef and a key signature of one flat. The second staff starts with a repeat sign. The third staff begins with a treble clef and a key signature of one flat. The fourth staff starts with a treble clef and a key signature of one flat.

Miss Hayes Reel. VWMLa.144



Musical score for Miss Hayes Reel, VWMLa.144. The score consists of three staves of music in G major (one flat) and common time. The first staff begins with a treble clef and a key signature of one flat. The second staff starts with a treble clef and a key signature of one flat. The third staff begins with a treble clef and a key signature of one flat.

Charms of the Fair. VWMLa.145



Musical score for Charms of the Fair, VWMLa.145. The score consists of four staves of music in G major (one flat) and 6/8 time. The first staff begins with a treble clef and a key signature of one flat. The second staff starts with a treble clef and a key signature of one flat. The third staff begins with a treble clef and a key signature of one flat. The fourth staff starts with a treble clef and a key signature of one flat.

Card Assembly. VWMLa.146

Musical score for 'Card Assembly. VWMLa.146'. It consists of four staves of music in treble clef, 2/4 time, with a key signature of one sharp (F#). The first staff begins with a treble clef and a sharp sign. The second staff continues the melody. The third staff starts with a piano (P) dynamic marking. The fourth staff starts with a forte (F) dynamic marking. The piece concludes with a double bar line.

Seventh of October. VWMLa.147

Musical score for 'Seventh of October. VWMLa.147'. It consists of three staves of music in treble clef, 2/4 time, with a key signature of one flat (Bb). The first staff begins with a treble clef and a flat sign. The second staff continues the melody. The third staff starts with a piano (P) dynamic marking. The piece concludes with a double bar line.

The Mount. VWMLa.148  
 Green Box, aka. VWMLa.148  
 Robinson Crusoe, aka. JaW.300  
 City of Paris, aka JaW.300

Musical score for 'The Mount. VWMLa.148'. It consists of four staves of music in treble clef, 6/8 time, with a key signature of one sharp (F#). The first staff begins with a treble clef and a sharp sign. The second staff continues the melody. The third staff continues the melody. The fourth staff concludes with a double bar line and the instruction 'D.C.' (Da Capo).

Miss Wades Fancy. VWMLa.149

Musical score for 'Miss Wades Fancy' (VWMLa.149). The score consists of four staves of music in treble clef, common time (C). The first two staves are the main melody, and the last two staves are a second part. The melody is primarily eighth and sixteenth notes, with some quarter notes. There are repeat signs at the end of the first and second parts. A fermata is placed over the final note of the second part. A '2' above a note in the third staff indicates a second ending.

Rosemary Top. VWMLa.150

Musical score for 'Rosemary Top' (VWMLa.150). The score consists of three staves of music in treble clef, 6/8 time. The key signature has one sharp (F#). The melody is primarily eighth and sixteenth notes. There are repeat signs at the end of the first and second parts. A fermata is placed over the final note of the second part.

Epping Forrest. VWMLa.151

Musical score for 'Epping Forrest' (VWMLa.151). The score consists of three staves of music in treble clef, 6/8 time. The key signature has one flat (Bb). The melody is primarily eighth and sixteenth notes. There are repeat signs at the end of the first and second parts. A fermata is placed over the final note of the second part. A '2' above a note in the second staff indicates a second ending.

## Les Moines de Med'nham. VWMLa.152

Musical score for 'Les Moines de Med'nham. VWMLa.152'. The score consists of four staves of music in 6/8 time, featuring a key signature of one flat (B-flat). The first staff begins with a treble clef and a key signature of one flat. The second staff starts with a repeat sign. The third staff continues the melody. The fourth staff includes trill ornaments (marked with a 'z') over several notes. The piece concludes with a double bar line and repeat dots.

## Trip to the Lakes. VWMLa.153

Musical score for 'Trip to the Lakes. VWMLa.153'. The score consists of three staves of music in 6/8 time, featuring a key signature of one flat (B-flat). The first staff begins with a treble clef and a key signature of one flat. The second staff starts with a repeat sign. The third staff continues the melody. The piece concludes with a double bar line and repeat dots.

New 12th Night. VWMLa.154

Indian Queen, aka. VWMLa.154

A musical score for a piece titled 'New 12th Night' (VWMLa.154), also known as 'Indian Queen'. The score is written in a single system with six staves. The key signature is one flat (B-flat) and the time signature is 2/4. The music consists of a single melodic line with various rhythmic patterns, including eighth and sixteenth notes, and rests. The piece concludes with a double bar line.

Myrtle Grove. VWMLa.155

A musical score for a piece titled 'Myrtle Grove' (VWMLa.155). The score is written in a single system with six staves. The key signature is one flat (B-flat) and the time signature is 6/8. The music features a single melodic line with dynamic markings: 'P' (piano) and 'F' (forte). The piece concludes with a double bar line.

## La Fete da Bruge. VWMLa.156

Musical score for 'La Fete da Bruge' (VWMLa.156). The piece is in G major and 2/4 time. It consists of two staves. The first staff contains the melody, and the second staff contains the accompaniment. The melody features a mix of eighth and sixteenth notes, with some rests and a final double bar line. The accompaniment is primarily eighth-note patterns with some sixteenth-note runs and trills.

## Moss Rose. VWMLa.157

Musical score for 'Moss Rose' (VWMLa.157). The piece is in G major and 2/4 time. It consists of two staves. The first staff contains the melody, and the second staff contains the accompaniment. The melody is characterized by eighth-note patterns and some sixteenth-note runs. The accompaniment features a steady eighth-note bass line with some sixteenth-note figures. Dynamics markings 'P' (piano) and 'F' (forte) are present in the second staff.

## New Charms of the Fair. VWMLa.158

Musical score for 'New Charms of the Fair' (VWMLa.158). The piece is in G major and 2/4 time. It consists of two staves. The first staff contains the melody, and the second staff contains the accompaniment. The melody is composed of eighth and sixteenth notes. The accompaniment is a rhythmic pattern of eighth notes.

## The Goddess. VWMLa.159

Musical score for 'The Goddess' (VWMLa.159). The piece is in G major and 2/4 time. It consists of four staves. The first staff contains the melody, and the following three staves contain the accompaniment. The melody is a simple eighth-note line. The accompaniment is a complex rhythmic pattern of eighth and sixteenth notes.



Cap'n Pelhams Favourite. VWMLa.160

Musical notation for 'Cap'n Pelhams Favourite. VWMLa.160'. It consists of two staves of music in G major and 2/4 time. The first staff contains the main melody, and the second staff contains a bass line with dynamic markings 'P' (piano) and 'F' (forte).

Lady Townsend Fancy. VWMLa.161

Musical notation for 'Lady Townsend Fancy. VWMLa.161'. It consists of three staves of music in G major and 2/4 time. The first two staves contain the main melody, and the third staff contains a bass line.

Sandy o'er the Lee. VWMLa.162

Musical notation for 'Sandy o'er the Lee. VWMLa.162'. It consists of three staves of music in G major and 2/4 time. The first two staves contain the main melody, and the third staff contains a bass line.

Le Malbro'. VWMLa.163  
We Won't Go Home..aka. VWMLa.163  
Malbrook, aka. VWMLa.163

Musical notation for 'Le Malbro'. VWMLa.163'. It consists of two staves of music in G major and 6/8 time. The first staff contains the main melody, and the second staff contains a bass line with a 'D.C.' (Da Capo) marking.

For He's a Jolly Good Fellow. PJH.



Miss Cartwrite Fancy. VWMLa.168

Musical score for Miss Cartwrite Fancy, VWMLa.168. The score consists of two staves. The first staff begins with a treble clef, a key signature of one flat (B-flat), and a 6/8 time signature. It features a melody with several trills marked with a 'z' symbol. The second staff continues the melody with various rhythmic patterns and rests.

Le Jupou Rouge. VWMLa.169

Musical score for Le Jupou Rouge, VWMLa.169. The score consists of two staves. The first staff begins with a treble clef, a key signature of two sharps (D major), and a 6/8 time signature. It features a melody with several trills marked with a 'z' symbol. The second staff continues the melody with various rhythmic patterns and rests. The text 'drone on A' is written above the first staff, and 'D.C.' is written above the second staff.

Maid of the Mill. VWMLa.170

Musical score for Maid of the Mill, VWMLa.170. The score consists of two staves. The first staff begins with a treble clef, a key signature of two sharps (D major), and a 6/8 time signature. It features a melody with several trills marked with a 'z' symbol. The second staff continues the melody with various rhythmic patterns and rests. The text 'NB' is written above the first staff.

Jacksons Morning Brush. VWMLa.171

Musical score for Jacksons Morning Brush, VWMLa.171. The score consists of three staves. The first staff begins with a treble clef, a key signature of two sharps (D major), and a 6/8 time signature. It features a melody with several trills marked with a 'z' symbol. The second and third staves continue the melody with various rhythmic patterns and rests.

Rokeby Park. VWMLa.172

Musical score for 'Rokeby Park. VWMLa.172'. It consists of three staves of music in treble clef with a key signature of two sharps (F# and C#) and a 6/8 time signature. The first staff contains the main melody with several trills. The second staff provides a rhythmic accompaniment with eighth-note patterns. The third staff continues the accompaniment and includes a 'Minore' section with a 'B|' marking and a double bar line.

Sixth of April. VWMLa.173

Musical score for 'Sixth of April. VWMLa.173'. It consists of two staves of music in treble clef with a key signature of one sharp (F#) and a 6/8 time signature. The first staff features a melody with eighth-note runs. The second staff provides a rhythmic accompaniment with eighth-note patterns and includes a trill.

Cap'n Andersons Favourite. VWMLa.174

Musical score for 'Cap'n Andersons Favourite. VWMLa.174'. It consists of two staves of music in treble clef with a 6/8 time signature. The first staff contains a melody with eighth-note patterns. The second staff provides a rhythmic accompaniment with eighth-note patterns.

Trip to Kilwick. VWMLa.175

Musical score for 'Trip to Kilwick. VWMLa.175'. It consists of two staves of music in treble clef with a key signature of one flat (Bb) and a 6/8 time signature. The first staff contains a melody with eighth-note patterns. The second staff provides a rhythmic accompaniment with eighth-note patterns and includes dynamic markings 'P' (piano) and 'F' (forte).

Whim. VWMLa.176

Musical score for 'Whim' (VWMLa.176) in 2/4 time. The score consists of two staves. The first staff is in G major and contains a single melodic line. The second staff is in B-flat major and contains a bass line with dynamic markings 'P', 'F', and 'D.C.', and includes some slurs and accents.

Poor Soldier. VWMLa.177

Musical score for 'Poor Soldier' (VWMLa.177) in 2/4 time. The score consists of two staves. The first staff is in G major and contains a single melodic line with the annotation 'or in MS' above it. The second staff is in G major and contains a bass line with a complex rhythmic accompaniment.

May Day. VWMLa.178

Musical score for 'May Day' (VWMLa.178) in 3/8 time. The score consists of two staves. The first staff is in G major and contains a single melodic line. The second staff is in G major and contains a bass line with dynamic markings 'P' and 'F'.

Spring Meeting. VWMLa.179

Musical score for 'Spring Meeting' (VWMLa.179) in 3/8 time. The score consists of two staves. The first staff is in B-flat major and contains a single melodic line. The second staff is in B-flat major and contains a bass line with a complex rhythmic accompaniment.

Lunardi. VWMLa.180

Musical score for 'Lunardi' (VWMLa.180) in 2/4 time. The score consists of two staves. The first staff is in G major and contains a single melodic line. The second staff is in G major and contains a bass line with dynamic markings 'P' and 'F', and includes some slurs and accents.

Egg Dance. VWMLa.181

Musical notation for 'Egg Dance. VWMLa.181'. It consists of two staves of music in 3/4 time, featuring a key signature of one flat (Bb). The melody is primarily eighth-note based with some sixteenth-note runs.

Scotch Reel. VWMLa.182

Musical notation for 'Scotch Reel. VWMLa.182'. It consists of three staves of music in 2/4 time, featuring a key signature of two sharps (D major). The melody is characterized by frequent doublets (indicated by a '2' over the notes) and eighth-note patterns.

Bowling Green. VWMLa.183

Musical notation for 'Bowling Green. VWMLa.183'. It consists of two staves of music in 2/4 time, featuring a key signature of two sharps (D major). The melody is eighth-note based. The second staff includes dynamic markings: 'P' (piano) and 'F' (forte).

The Finale. VWMLa.184

Musical notation for 'The Finale. VWMLa.184'. It consists of two staves of music in 6/8 time, featuring a key signature of two sharps (D major). The melody is eighth-note based with some sixteenth-note runs and doublets.

Young Richard. VWMLa.185

Musical score for 'Young Richard. VWMLa.185'. The score consists of two staves in 2/4 time with a key signature of one flat (B-flat). The first staff begins with a treble clef and contains a melodic line with various ornaments and slurs. The second staff begins with a bass clef and contains a bass line with dynamic markings 'P' (piano) and 'F' (forte), and includes slurs and ornaments.

La Belle Catherine. VWMLa.186

The Muffin Man. VWMLa.186

Musical score for 'La Belle Catherine. VWMLa.186' and 'The Muffin Man. VWMLa.186'. The score consists of two staves in 2/4 time with a key signature of one flat (B-flat). The first staff begins with a treble clef and contains a melodic line with slurs and ornaments. The second staff begins with a bass clef and contains a bass line with slurs and ornaments, ending with the marking 'D.C.' (Da Capo).

New Years Day. VWMLa.187

Musical score for 'New Years Day. VWMLa.187'. The score consists of two staves in 3/8 time with a key signature of two sharps (D major). The first staff begins with a treble clef and contains a melodic line with slurs and ornaments. The second staff begins with a bass clef and contains a bass line with slurs and ornaments.

Wycombe Abbey. VWMLa.188

Musical score for 'Wycombe Abbey. VWMLa.188'. The score consists of two staves in 3/8 time with a key signature of two sharps (D major). The first staff begins with a treble clef and contains a melodic line with slurs, ornaments, and a first ending bracket labeled '1' and a second ending bracket labeled '2'. The second staff begins with a bass clef and contains a bass line with dynamic markings 'P' (piano) and 'F' (forte), and includes slurs and ornaments.

## Queens Birth Night. VWMLa.189

Musical score for 'Queens Birth Night. VWMLa.189'. The piece is in 2/4 time and B-flat major. It consists of two staves of music. The first staff begins with a treble clef, a key signature of one flat, and a 2/4 time signature. The melody is written in a simple, rhythmic style. The second staff continues the melody, featuring some grace notes and a repeat sign at the beginning.

## Rock Abbey. VWMLa.190

Musical score for 'Rock Abbey. VWMLa.190'. The piece is in 2/4 time and B-flat major. It consists of two staves of music. The first staff begins with a treble clef, a key signature of one flat, and a 2/4 time signature. The melody is written in a simple, rhythmic style. The second staff continues the melody, featuring some grace notes and a repeat sign at the beginning. Dynamics markings 'P' (piano) and 'F' (forte) are present.

## Valentine Day. VWMLa.191

Musical score for 'Valentine Day. VWMLa.191'. The piece is in 2/4 time and D major. It consists of two staves of music. The first staff begins with a treble clef, a key signature of two sharps, and a 2/4 time signature. The melody is written in a simple, rhythmic style. The second staff continues the melody, featuring some grace notes and a repeat sign at the beginning. A dynamic marking 'P' (piano) is present.

## German Dance. VWMLa.192

Musical score for 'German Dance. VWMLa.192'. The piece is in 2/4 time and D major. It consists of two staves of music. The first staff begins with a treble clef, a key signature of two sharps, and a 2/4 time signature. The melody is written in a simple, rhythmic style. The second staff continues the melody, featuring some grace notes and a repeat sign at the beginning. A dynamic marking 'D.C.' (Da Capo) is present.



Gretna Green. VWMLa.193

Musical score for Gretna Green. VWMLa.193. The score consists of four staves of music in treble clef, key of D major (two sharps), and 3/8 time. The first two staves are melodic lines with various ornaments and slurs. The third staff begins with a piano (P) dynamic marking and features a more rhythmic accompaniment. The fourth staff begins with a forte (F) dynamic marking and continues the accompaniment. The piece concludes with a double bar line and repeat dots.

The Cupboard Hornpipe, aka. VWMLa.194

Hornpipe, untitled. VWMLa.194

Musical score for The Cupboard Hornpipe, aka. VWMLa.194. The score consists of four staves of music in treble clef, key of B-flat major (two flats), and common time (C). The melody is characterized by eighth-note patterns and slurs. The fourth staff includes a double bar line and the instruction 'D.C.' (Da Capo).

Untitled in MS.

Wycombe Abbey. VWMLa.195

Musical score for Wycombe Abbey. VWMLa.195. The score consists of two staves of music in treble clef, key of D major (two sharps), and 3/8 time. The first staff is a melodic line with slurs and ornaments. The second staff begins with a piano (P) dynamic marking, followed by a forte (F) dynamic marking, and includes slurs and ornaments. The piece concludes with a double bar line and repeat dots.

## Vale of Wharf. VWMLa.196

Musical score for 'Vale of Wharf. VWMLa.196'. The piece is in G major (one sharp) and 2/4 time. It consists of two staves. The first staff contains a single melodic line with various rhythmic patterns, including eighth and sixteenth notes. The second staff provides a harmonic accompaniment, primarily using chords and moving bass lines.

## Kirkloes Park. VWMLa.197

Musical score for 'Kirkloes Park. VWMLa.197'. The piece is in G major (one sharp) and 2/4 time. It consists of four staves. The first staff is a single melodic line. The second and third staves provide harmonic accompaniment with chords and moving lines. The fourth staff continues the accompaniment with more complex rhythmic patterns.

## Daniel Deaker. VWMLa.198

Musical score for 'Daniel Deaker. VWMLa.198'. The piece is in F major (one flat) and 6/8 time. It consists of two staves. The first staff is a single melodic line with a steady eighth-note rhythm. The second staff provides a harmonic accompaniment with chords and moving bass lines.

## Peggy White. VWMLa.199

Musical score for 'Peggy White. VWMLa.199'. The piece is in F major (one flat) and 2/4 time. It consists of two staves. The first staff is a single melodic line with a mix of eighth and quarter notes. The second staff provides a harmonic accompaniment with chords and moving bass lines.

Jenny Sutton. VWMLa.200

Musical score for Jenny Sutton. VWMLa.200. The score is written in treble clef with a key signature of two sharps (F# and C#) and a common time signature (C). It consists of three staves of music. The first staff begins with a treble clef, a key signature of two sharps, and a common time signature. The music features a mix of eighth and sixteenth notes, with some rests. The second and third staves continue the melody, with the third staff ending with a double bar line and repeat dots.

Opera Reel. VWMLa.201

Musical score for Opera Reel. VWMLa.201. The score is written in treble clef with a key signature of two sharps (F# and C#) and a common time signature (C). It consists of four staves of music. The first staff begins with a treble clef, a key signature of two sharps, and a common time signature. The music features a mix of eighth and sixteenth notes, with some rests. The second, third, and fourth staves continue the melody, with the fourth staff ending with a double bar line and repeat dots.

Dick Dale. VWMLa.202

Musical score for Dick Dale. VWMLa.202. The score is written in treble clef with a key signature of one sharp (F#) and a 6/8 time signature. It consists of four staves of music. The first staff begins with a treble clef, a key signature of one sharp, and a 6/8 time signature. The music features a mix of eighth and sixteenth notes, with some rests. The second, third, and fourth staves continue the melody, with the fourth staff ending with a double bar line and repeat dots.

Theodore. VWMLa.203

Two staves of musical notation in treble clef, key of D major (one sharp), and common time (C). The first staff contains a melody with a repeat sign at the end. The second staff contains a more complex accompaniment with many sixteenth notes and slurs.

Down the Burn and Through the Mead. VWMLa.204

Six staves of musical notation in treble clef, key of D major (one sharp), and common time (C). The notation is a single melodic line with various rhythmic values, including eighth and sixteenth notes, and rests. It features several slurs and a repeat sign at the end.

Money Musk. VWMLa.205

Three staves of musical notation in treble clef, key of D major (two sharps), and common time (C). The notation is a single melodic line consisting of a series of eighth notes with slurs, ending with a repeat sign.

Figary's Fancy. VWMLa.206

Minore

Weatherby Grange. VWMLa.207

The Apollo. VWMLa.208

Content. VWMLa.209

Capt' Macintosh's Delight. VWMLa.210  
Captain Mackintosh's Fancy, aka. VWMLa.210

Musical score for 'Capt' Macintosh's Delight' in G major (one sharp) and 2/4 time. The score consists of four staves of music. The first staff is the melody. The second and fourth staves contain piano (P) and forte (F) markings. The third staff contains a forte (F) marking. The fourth staff contains piano (P) and forte (F) markings. The piece concludes with a double bar line and repeat dots.

La Bienfacile. VWMLa.211

Musical score for 'La Bienfacile' in B-flat major (two flats) and 2/4 time. The score consists of two staves. The first staff is the melody. The second staff contains a double bar line, repeat dots, and a 'D.C.' (Da Capo) marking. The piece concludes with a double bar line and repeat dots.

Rose Tree. VWMLa.212

Musical score for 'Rose Tree' in G major (one sharp) and 2/4 time. The score consists of two staves. The first staff is the melody. The second staff contains a double bar line, repeat dots, and a 'D.C.' (Da Capo) marking. The piece concludes with a double bar line and repeat dots.

Russian Dance. VWMLa.213

Musical score for 'Russian Dance' in G major (one sharp) and 2/4 time. The score consists of two staves. The first staff is the melody. The second staff contains a double bar line, repeat dots, and a 'D.C.' (Da Capo) marking. The piece concludes with a double bar line and repeat dots.

New Ball Hunt. VWMLa.214

Musical score for 'New Ball Hunt' (VWMLa.214). The score is written in treble clef with a key signature of one flat (Bb) and a 6/8 time signature. It consists of three staves. The first staff contains the melody with various note values and rests. The second staff provides a rhythmic accompaniment with eighth and sixteenth notes. The third staff continues the accompaniment, starting with a 'P' (piano) dynamic marking.

Such Things Are. VWMLa.215

Musical score for 'Such Things Are' (VWMLa.215). The score is written in treble clef with a key signature of one sharp (F#) and a 6/8 time signature. It consists of three staves. The first staff contains the melody with various note values and rests, including some notes with a 'z' (zephyr) marking. The second staff provides a rhythmic accompaniment with eighth and sixteenth notes. The third staff continues the accompaniment, starting with a 'P' (piano) dynamic marking and including a 'F' (forte) dynamic marking.

My Dear Ma'am. VWMLa.216

Musical score for 'My Dear Ma'am' (VWMLa.216). The score is written in treble clef with a key signature of one flat (Bb) and a 6/8 time signature. It consists of two staves. The first staff contains the melody with various note values and rests. The second staff provides a rhythmic accompaniment with eighth and sixteenth notes.

Mrs. Casey. VWMLa.217

Musical score for 'Mrs. Casey' (VWMLa.217). The score is written in treble clef with a key signature of one sharp (F#) and a 6/8 time signature. It consists of two staves. The first staff contains the melody with various note values and rests. The second staff provides a rhythmic accompaniment with eighth and sixteenth notes, ending with a 'D.C.' (Da Capo) marking.

## Ashleys Hornpipe. VWMLa.218



Musical score for Ashleys Hornpipe, VWMLa.218. The score is written in treble clef, 2/4 time, and B-flat major. It consists of four staves of music. The first staff begins with a treble clef, a B-flat key signature, and a common time signature. The music is a single melodic line. The second staff continues the melody. The third staff begins with a repeat sign. The fourth staff concludes the piece with a double bar line and repeat dots.

## Orange Ribbands. VWMLa.219



Musical score for Orange Ribbands, VWMLa.219. The score is written in treble clef, 2/4 time, and D major. It consists of three staves of music. The first staff begins with a treble clef, a D major key signature, and a common time signature. The music is a single melodic line. The second staff continues the melody. The third staff begins with a piano (P) dynamic marking and continues the melody. The piece concludes with a double bar line and repeat dots.

## Any Thing. VWMLa.220



Musical score for Any Thing, VWMLa.220. The score is written in treble clef, 2/4 time, and B-flat major. It consists of three staves of music. The first staff begins with a treble clef, a B-flat key signature, and a 2/4 time signature. The music is a single melodic line. The second staff continues the melody. The third staff begins with a repeat sign and continues the melody. The piece concludes with a double bar line and repeat dots.



Black Cockade. VWMLa.221

Musical score for 'Black Cockade' (VWMLa.221). The piece is in 2/4 time and B-flat major. It consists of three staves. The first staff is the melody, starting with a repeat sign. The second and third staves provide accompaniment with rhythmic patterns of eighth and sixteenth notes.

The Lounger. VWMLa.222

Musical score for 'The Lounger' (VWMLa.222). The piece is in 2/4 time and D major. It consists of five staves. The first staff is the melody, starting with a repeat sign. The second, third, and fourth staves provide accompaniment with rhythmic patterns of eighth and sixteenth notes. The fifth staff is the final line of the piece, ending with a repeat sign.

The Irish Washerwoman. VWMLa.223

Musical score for 'The Irish Washerwoman' (VWMLa.223). The piece is in 6/8 time and D major. It consists of four staves. The first staff is the melody, starting with a repeat sign. The second, third, and fourth staves provide accompaniment with rhythmic patterns of eighth and sixteenth notes.

## The Lendall. VWMLa.224

Musical score for 'The Lendall. VWMLa.224'. The score is written in treble clef, 2/4 time, and D major. It consists of three staves. The first staff begins with a treble clef and a key signature of one sharp (F#). The second staff begins with a repeat sign. The third staff includes two fermatas (marked with a '2' above the notes) and ends with a repeat sign.

## Untitled March. VWMLa.225

Musical score for 'Untitled March. VWMLa.225'. The score is written in treble clef, 2/4 time, and D major. It consists of five staves. The first staff begins with a treble clef and a key signature of one sharp (F#). The second staff begins with a treble clef and a key signature of one sharp (F#). The third staff begins with a treble clef and a key signature of one sharp (F#). The fourth staff begins with a treble clef and a key signature of one sharp (F#). The fifth staff includes a 'D.C.' (Da Capo) marking and ends with a repeat sign.

## Jumping Deberah. VWMLa.226

Musical score for 'Jumping Deberah. VWMLa.226'. The score is written in treble clef, 2/4 time, and D major. It consists of two staves. The first staff begins with a treble clef and a key signature of one sharp (F#). The second staff begins with a repeat sign.

Key is D throughout in MS. PJH.

Fishers Hornpipe. VWMLa.227

Musical score for Fishers Hornpipe, VWMLa.227. The score consists of four staves of music in 2/4 time, featuring a key signature of one flat (B-flat). The melody is primarily eighth-note based with some sixteenth-note runs. The first staff begins with a treble clef and a common time signature, which changes to 2/4. The second staff ends with a repeat sign. The third staff begins with a repeat sign. The fourth staff ends with a repeat sign.

The Scruple. VWMLa.228

Musical score for The Scruple, VWMLa.228. The score consists of four staves of music in 3/8 time, featuring a key signature of three flats (E-flat major). The melody is primarily eighth-note based. The first staff begins with a treble clef and a 3/8 time signature. The second staff ends with a repeat sign. The third staff begins with a repeat sign. The fourth staff ends with a repeat sign.

The Rhone. VWMLa.229

Musical score for The Rhone, VWMLa.229. The score consists of three staves of music in 2/4 time, featuring a key signature of two sharps (D major). The melody is primarily eighth-note based. The first staff begins with a treble clef and a 2/4 time signature. The second staff has a piano (P) dynamic marking above the final measure. The third staff ends with a repeat sign.

The Birth Day. VWMLa.230

Musical score for 'The Birth Day. VWMLa.230'. It consists of two staves of music in G major (one sharp) and 2/4 time. The first staff contains the main melody, and the second staff contains a bass line. The piece concludes with a double bar line and repeat dots. The text 'D.C.' is written above the final measure of the second staff.

Loch Erroche Side

Musical score for 'Loch Erroche Side'. It consists of three staves of music in C major and 2/4 time. The first staff contains the main melody, and the second and third staves contain a bass line. The piece concludes with a double bar line and repeat dots.

Royal Cir(c)us. VWMLa.232

Musical score for 'Royal Cir(c)us. VWMLa.232'. It consists of four staves of music in B-flat major (two flats) and 6/8 time. The first staff contains the main melody, and the second, third, and fourth staves contain a bass line. The piece includes several trills, indicated by a '2' above the notes, and concludes with a double bar line and repeat dots.

German Boor Dance. VWMLa.233

Musical score for German Boor Dance, VWMLa.233. The score is written in treble clef with a key signature of two sharps (F# and C#) and a time signature of 2/4. It consists of three staves. The first staff contains the main melody, starting with a quarter rest followed by a series of eighth and sixteenth notes. The second and third staves provide accompaniment with rhythmic patterns of eighth and sixteenth notes.

Richard Coer de Lion. VWMLa.234

Musical score for Richard Coer de Lion, VWMLa.234. The score is written in treble clef with a key signature of two sharps (F# and C#) and a time signature of 2/4. It consists of two staves. The first staff contains the main melody, featuring a sequence of eighth and sixteenth notes. The second staff provides accompaniment with a similar rhythmic pattern, including a second ending marked with a '2'.

My Wanton Wee Thing. VWMLa.235

Musical score for My Wanton Wee Thing, VWMLa.235. The score is written in treble clef with a key signature of two sharps (F# and C#) and a time signature of 6/8. It consists of two staves. The first staff contains the main melody, characterized by a mix of eighth and sixteenth notes. The second staff provides accompaniment with a rhythmic pattern of eighth notes.

The Wedding Day. VWMLa.236

Musical score for The Wedding Day, VWMLa.236. The score is written in treble clef with a key signature of two flats (Bb and Eb) and a time signature of 2/4. It consists of three staves. The first staff contains the main melody, starting with a quarter rest and a series of eighth notes, with a dynamic marking 'P' (piano) above it. The second and third staves provide accompaniment with rhythmic patterns of eighth and sixteenth notes, including a dynamic marking 'F' (forte) above the second staff.

## Miss Blands Allemand. VWMLa.237

Musical score for Miss Blands Allemand. VWMLa.237. The score consists of four staves of music in G minor (one flat) and 2/4 time. The first staff begins with a treble clef and a key signature of one flat. The music features a mix of eighth and sixteenth notes, with some triplet-like patterns. The second and third staves contain repeat signs at the beginning. The fourth staff concludes with a final cadence.

## The Banquet. VWMLa.238

Musical score for The Banquet. VWMLa.238. The score consists of two staves of music in G minor (one flat) and 6/8 time. The first staff begins with a treble clef and a key signature of one flat. The music is characterized by a steady eighth-note accompaniment and a melody of eighth and sixteenth notes. The second staff contains a repeat sign at the beginning and ends with a final cadence.

## Dibdins Fancy. VWMLa.239

Musical score for Dibdins Fancy. VWMLa.239. The score consists of two staves of music in G major (one sharp) and 2/4 time. The first staff begins with a treble clef and a key signature of one sharp. The music features a mix of eighth and sixteenth notes. The second staff contains a repeat sign at the beginning and ends with a final cadence. The notation 'D.C.' is written above the final few notes of the second staff.

## Pleyels Air. VWMLa.240

Musical score for Pleyels Air. VWMLa.240. The score consists of two staves of music in D major (two sharps) and 2/4 time. The first staff begins with a treble clef and a key signature of two sharps. The music features a mix of eighth and sixteenth notes. The second staff contains a repeat sign at the beginning and ends with a final cadence.

Morgan Rattle. VWMLa.241

Morning Ratler. VWMLa.241

Musical notation for Morgan Rattle. VWMLa.241. The piece is in 6/8 time and G major. It consists of three staves of music. The first staff begins with a treble clef, a key signature of one sharp (F#), and a 6/8 time signature. The melody is composed of eighth and sixteenth notes. The second and third staves continue the melody with similar rhythmic patterns.

Sir Alex'r MacDonal's Reel. VWMLa.242

Musical notation for Sir Alex'r MacDonal's Reel. VWMLa.242. The piece is in 4/4 time and G major. It consists of two staves of music. The first staff begins with a treble clef, a key signature of one sharp (F#), and a 4/4 time signature. The melody is composed of eighth and sixteenth notes. The second staff continues the melody with similar rhythmic patterns.

The Targett. VWMLa.243

Musical notation for The Targett. VWMLa.243. The piece is in 6/8 time and G major. It consists of three staves of music. The first staff begins with a treble clef, a key signature of one sharp (F#), and a 6/8 time signature. The melody is composed of eighth and sixteenth notes. The second and third staves continue the melody with similar rhythmic patterns. A 'NB' (Nota Bene) marking is present above the second staff.

Royal Archers. VWMLa.244

Musical notation for Royal Archers. VWMLa.244. The piece is in 6/8 time and F major. It consists of two staves of music. The first staff begins with a treble clef, a key signature of two flats (Bb, Eb), and a 6/8 time signature. The melody is composed of eighth and sixteenth notes. The second staff continues the melody with similar rhythmic patterns. A 'D.C.' (Da Capo) marking is present above the second staff.

## The Harvest. VWMLa.245

Musical score for 'The Harvest. VWMLa.245'. The piece is in 2/4 time with a key signature of one flat (B-flat). It consists of two staves. The upper staff features a melody with eighth-note patterns and some sixteenth-note runs. The lower staff provides a rhythmic accompaniment with a steady eighth-note pattern.

## The Lowther Hunt. VWMLa.246

Musical score for 'The Lowther Hunt. VWMLa.246'. The piece is in 2/4 time with a key signature of two sharps (D major). It consists of two staves. The upper staff has a melody with dotted rhythms and eighth notes. The lower staff has a rhythmic accompaniment with eighth notes. The piece concludes with the instruction 'D.C.' (Da Capo).

## The Forest. VWMLa.247

Musical score for 'The Forest. VWMLa.247'. The piece is in 6/8 time with a key signature of one flat (B-flat). It consists of two staves. The upper staff features a melody with dotted rhythms and eighth notes. The lower staff has a rhythmic accompaniment with eighth notes.

## Ah Ca Ira. VWMLa.248

Ca Ira. VWMLa.248

Musical score for 'Ah Ca Ira. VWMLa.248' and 'Ca Ira. VWMLa.248'. The piece is in 2/4 time with a key signature of two sharps (D major). It consists of four staves. The upper two staves feature a melody with eighth-note patterns and some sixteenth-note runs. The lower two staves provide a rhythmic accompaniment with eighth notes. The piece concludes with the instruction 'D.C.' (Da Capo).



The Fly. VWMLa.249

Musical score for 'The Fly' (VWMLa.249). It consists of two staves of music in G major and 2/4 time. The first staff begins with a treble clef, a key signature of one sharp (F#), and a 2/4 time signature. The melody is written in a simple, folk-like style. The second staff continues the melody with similar rhythmic patterns and phrasing.

Duke of Clarence's Fancy. VWMLa.250

Musical score for 'Duke of Clarence's Fancy' (VWMLa.250). It consists of two staves of music in G major and 2/4 time. The first staff begins with a treble clef, a key signature of one sharp (F#), and a 2/4 time signature. The melody is written in a simple, folk-like style. The second staff continues the melody with similar rhythmic patterns and phrasing, ending with a 'D.C.' (Da Capo) instruction.

Miss Bells Strathspey. VWMLa.251

Musical score for 'Miss Bells Strathspey' (VWMLa.251). It consists of three staves of music in B-flat major and common time (C). The first staff begins with a treble clef, a key signature of two flats (Bb, Eb), and a common time signature. The melody is written in a simple, folk-like style. The second and third staves continue the melody with similar rhythmic patterns and phrasing.

Sheriffs Ball. VWMLa.252

Musical score for 'Sheriffs Ball' (VWMLa.252). It consists of three staves of music in G major and common time (C). The first staff begins with a treble clef, a key signature of one sharp (F#), and a common time signature. The melody is written in a simple, folk-like style. The second and third staves continue the melody with similar rhythmic patterns and phrasing.

Prince Edwards Fancy. VWMLa.253

Musical score for 'Prince Edwards Fancy' in G major and 2/4 time. It consists of three staves. The first staff is the melody, starting with a treble clef and a key signature of one sharp (F#). The second and third staves provide accompaniment, with the second staff featuring some grace notes (marked with a tilde symbol) and the third staff providing a steady bass line.

Jackson's Bowl of Punch. VWMLa.254

Musical score for 'Jackson's Bowl of Punch' in G major and 6/8 time. It consists of two staves. The first staff is the melody, and the second staff is the accompaniment. The melody features a mix of eighth and sixteenth notes, with some phrasing slurs.

Three Captains. VWMLa.255

Musical score for 'Three Captains' in G major and 6/8 time. It consists of four staves. The first staff is the melody, featuring grace notes. The second staff includes first and second endings, marked with '1' and '2'. The third staff is the accompaniment, and the fourth staff concludes with a 'D.C.' (Da Capo) instruction.

Lady Shaftsbury's Fancy. VWMLa.256

Musical score for Lady Shaftsbury's Fancy, VWMLa.256. It consists of three staves of music in G major (one sharp) and 3/4 time. The first staff is the melody, the second is an accompaniment with some grace notes, and the third is a bass line. The piece ends with a double bar line and repeat dots.

Lord Macdonald's Rant. VWMLa.257

Musical score for Lord Macdonald's Rant, VWMLa.257. It consists of two staves of music in G major (one sharp) and 3/4 time. The first staff is the melody, and the second is an accompaniment. The second staff has two first endings marked with '1' and '2'. The piece ends with a double bar line and repeat dots.

The Chapter of Kings. VWMLa.258

Musical score for The Chapter of Kings, VWMLa.258. It consists of two staves of music in G major (one sharp) and 3/4 time. The first staff is the melody, and the second is an accompaniment. The piece ends with a double bar line and repeat dots.

Yorkshire Old Spot Hp, aka. VWMLa.259  
Hornpipe, untitled. VWMLa.259

Musical score for Yorkshire Old Spot Hornpipe, untitled. The score is written in 4/4 time and consists of four staves of music. The key signature is one flat (B-flat). The melody is characterized by a mix of eighth and sixteenth notes, with some triplet patterns. The piece begins with a repeat sign and ends with a double bar line.

Untitled in MS.

The Last Jig, aka. VWMLa.260

Musical score for The Last Jig, aka. VWMLa.260. The score is written in 6/8 time and consists of two staves of music. The key signature is one sharp (F#). The melody is characterized by a mix of eighth and sixteenth notes, with some triplet patterns. The piece begins with a repeat sign and ends with a double bar line.