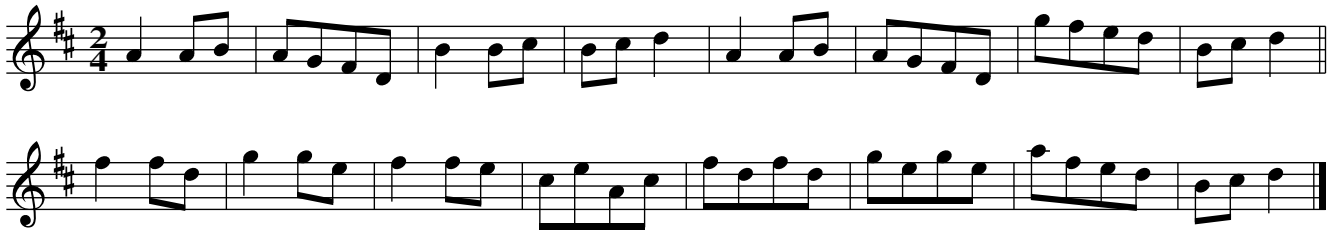


The Wind That Blows the Barley Down, aka. JSa.14

The Wind That Shakes the Barley, aka. JSa.14

Untitled in ms. JSa.14

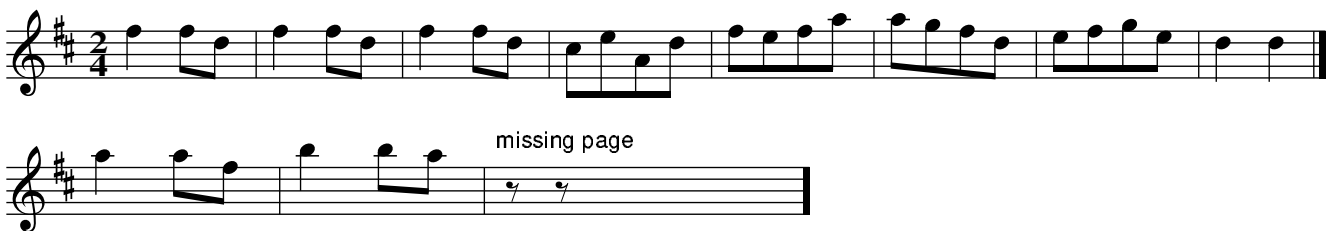


South Lincoln Hornpipe. JSa.01



The Fairy Dance (incomplete). JSa.02

*Incomplete tune in another hand*



New May Moon, aka. JSa.03

Untitled in ms. JSa.03

*Incomplete tune in another hand*



### Bath Waltz. JSa.10

Three staves of musical notation for the Bath Waltz. The first staff is in 3/8 time and ends with the annotation "sic". The second staff begins with a repeat sign and includes the annotation "bar line added". The third staff includes the annotation "cr. in ms" above a specific measure.

### Burton Hunt. JSa.11

Four staves of musical notation for the Burton Hunt. The first two staves are in 2/4 time. The third staff is annotated "unedited" and the fourth staff is annotated "last part suggested edit".

### The Tank. JSa.12

Two staves of musical notation for The Tank. The first staff is in 2/4 time. The second staff includes two annotations: "bar line and dots added" and "dots added".

New Dash. JSa.04

N.B.  
3

bar line added

Musical score for 'New Dash. JSa.04' in 3/8 time. It consists of four staves of music. The first staff begins with a treble clef and a 3/8 time signature. The music is written in a single melodic line. The second staff has a repeat sign at the beginning. The third and fourth staves also have repeat signs at the beginning. The piece concludes with a double bar line and repeat dots.

Drops of Brandy JSa.05

*in another hand*

Musical score for 'Drops of Brandy JSa.05' in 9/8 time. It consists of two staves of music. The first staff begins with a treble clef and a 9/8 time signature. The music is written in a single melodic line. The second staff has a repeat sign at the beginning. The piece concludes with a double bar line and repeat dots.

The Goddesses. JSa.06

as written

Musical score for 'The Goddesses. JSa.06' in 2/2 time. It consists of four staves of music. The first staff begins with a treble clef and a 2/2 time signature. The music is written in a single melodic line. The second staff has a repeat sign at the beginning and contains a complex rhythmic pattern. The third and fourth staves also have repeat signs at the beginning. The piece concludes with a double bar line and repeat dots.

The New May Moon. JSa.07

Musical score for 'The New May Moon. JSa.07' in 6/8 time. The score consists of four staves of music. The first staff begins with a treble clef and a 6/8 time signature. The melody is simple and folk-like, featuring eighth and quarter notes. The second and third staves provide accompaniment with similar rhythmic patterns. The fourth staff concludes the piece with a double bar line.

Tink a Tink. JSa.08

Musical score for 'Tink a Tink. JSa.08' in 2/4 time. The score consists of two staves of music. The first staff begins with a treble clef, a key signature of one sharp (F#), and a 2/4 time signature. The melody is characterized by a rhythmic pattern of eighth and quarter notes. The second staff provides accompaniment. The piece ends with a double bar line.

Jessie Sweet Flower of Dunblane. JSa.13

Musical score for 'Jessie Sweet Flower of Dunblane. JSa.13' in 6/8 time. The score consists of five staves of music. The first staff begins with a treble clef and a 6/8 time signature. The melody is more complex than the previous pieces, featuring sixteenth and eighth notes. The second and third staves provide accompaniment. The fourth staff includes the instruction 'as in ms' above the notes. The fifth staff concludes the piece with a double bar line.

Long Time I've Courted you miss. JSa.09

Long time I've court-ed you miss, And now I've come from sea, love. We'll  
make no more a - - do miss but quick - ly marr - ied be. Long  
time I've court - ed you miss, And now I've come from s - - ea. We - 'll  
make no more a - - - do miss but quick - ly marr - ied be. Sing  
fal de ral de ral lal la lal lal lal lal lal la  
fal de ral de ral lal la lal de lal de ral