

St. Patrick's Day. Ru1.001



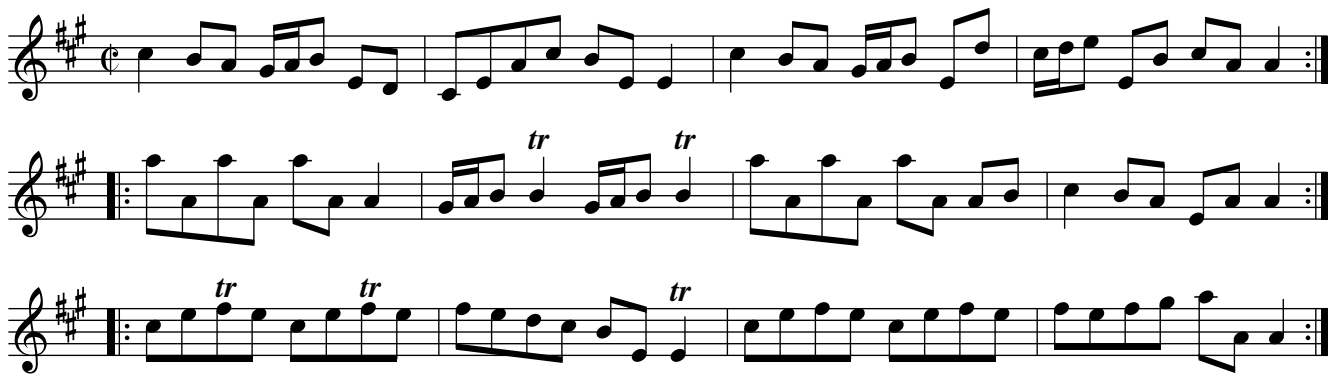
Cast off one Cu. and turn .l Cast up again & turn :l
 Cross over two Cu. .l. Lead up to the Top Foot it &
 Cast off :l

The Gates of Edinburgh. Ru1.002



Hey contrary sides .l Hey on your own sides :l
 Then the Man falls in at Bottom & the Wo. falls
 In at Top Foot it all fix & turn your own Partner :ll
 Then the Wo. falls in of the Man's side & the Man on
 the Woman's side foot it all 6 and turn y[ou]r Partner :l

Miss Gunnings. Ru1.003



The first Cu. Leads through the 2d Cu. and without side
 The 3d Cu. .l Then Lead through the 2d Cu. & cast up To the
 Top :l Cross over two Cu. .l. Lead up to the Top Foot it and
 cast off :ll: Hands round all six .lll Right Hand and
 Left at Top :lll:

Double Entendre. Ru1.004



Cast off one Cu. and turn your Partner .l
 Cast off Again and turn your Partner :l Lead up to
 the Top Foot it and cast off .l. Right Hand
 and Left with the Top Couple :l

Jack in the Box. Ru1.005



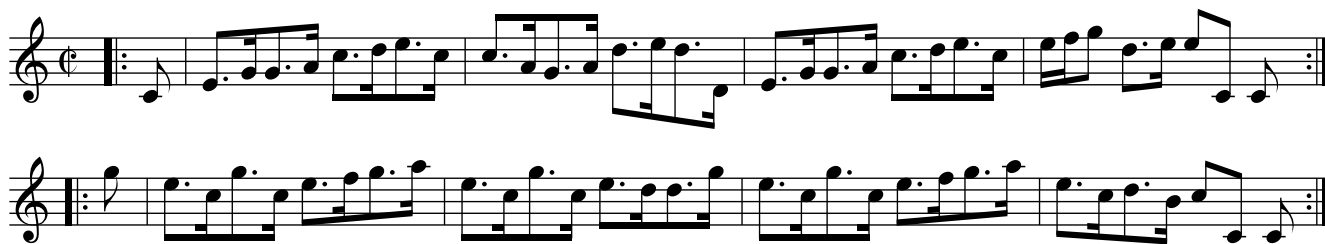
Foot it all four and right Hands across half round .|
 Foot it and Left Hands across back again :| The first
 Man Sett to the 2d Woman & turn .|. First Wo. does the
 same with the 2d man :|. Cross over half Figure
 right Hand & Left :|

Catch her if you can. Ru1.006



Cast off two Couple .| Cast up again :| Cross over
 And turn .|. Lead through the 3d Cu. and Cast up :|
 Foot it Corners and turn .|| Foot it the other
 Corners and turn .||. Lead out each side &
 turn your Partner :|

She's over young to marry. Ru1.007



Foot it all four & Hands across quite
Round .| Foot it the same back again.
Gallop down the Middle & up again &
Cast off .|. Right Hand & Left :|

Kiss under the Stairs. Ru1.008



The first Cu. cast off & Hands round with the 3d Cu. .| Cast up
Again & Hands round with the 2d Cu. :| Gallop down two Cu.
Up again cast off & turn Lead thro' the 3d Cu. cast up into the 2d
Couple's Place & turn your Partners :|

No catchee no havee. Ru1.009



First Man turns the 2d Wo. with his right Hand his
 Partner with his Left .| The Wo. turns the 2d Man with
 Her right Hand & her Partner with her Left :| Cross over
 & half Figure .|. Lead thro' the 3d Cu. & cast up & turn your
 Partner :|| Hands round all six :|| Right Hand & Left at Top :|

Johnny Groat's House. Ru1.010



The first Cu. Gallop down one Cu. & up again
 and cast off .| The same with the 3d Cu. and
 Cast off :| Hands round all six .|. Lead up
 To the Top Foot it and cast off :|

Northland Jockey. Ru1.011



The first Couple Lead through the 2d Cu. and Hands
Quite round with the 3d Cu. .l and cast up to the Top and
Hands across quite round with the 2d Cu. :l Foot it to
Your Partner & cross [NB] Cu. .l. Lead up & cast off
Foot it to your Partner and turn her :l

The Merry Girls of Epsom. Ru1.012



The first man turns his Partner with his right Hand
and cast off one Cu. .l Turn her with
Your Left Hand & cast up :l Gallop down and up
Again & cast off .l. Right Hand and Left with
The 2d Cu. :l

The Rakes of Adair. Ru1.013



Foot it and cast off two Cu. .| Foot it and cast
Up again :| Cross over Lead through the
Bottom .|. Right Hand and Left with the
Top Couple :|

We are all right at Canterbury. Ru1.014



The first Cu. turns Three with the 2d Wo. .| The same
To the Man :| Cross over two Cu. Lead up to the
Top Foot it and cast off .|. Lead through the Bottom
Cu. cast up right Hand and Left with the Top :|

West Street Assembly. Ru1.015



Cross over one Cu. and turn you[r] Partner .|. Cross
 Over again and turn :| Lead up to the Top Foot
 It and cast off .|. Hands all six & turn your Partner :|

Westminster Bridge. Ru1.016



The first Cu. Heys with the 2d Wo. .| The same
 With the 2d Man :| Cross over two u. .|. Lead
 Up to the Top Foot it and cast off :|

Free and Easy. Ru1.017



Hay contrary sides .| Hay on your own sides :|
 Cross over two Cu. .|. Lead up to the Top Foot it
 And cast off :||: Foot it corners and turn .||
 Foot it the other corners and turn :|| Lead out
 Each sides and turn your Partners :|

Quiet and snug. Ru1.018



The first Cu. sets to the 2d Wo. and turns his own
 Partner .| Then sets to the 2d Man & turn his
 Own Partner :| Gallop down the Middle & up again
 And cast off .|. Right Hand & Left :|

Guess again. Ru1.019



The first Cu. sets to the 2d Wo. and not
 Turn .| The same to the Man :| Gallop down
 And up again and cast off :||: Hands across
 Half round with the Top Cu. .|| And back
 Again :|| right Hand and Left :|

Northampton Frolick. Ru1.020



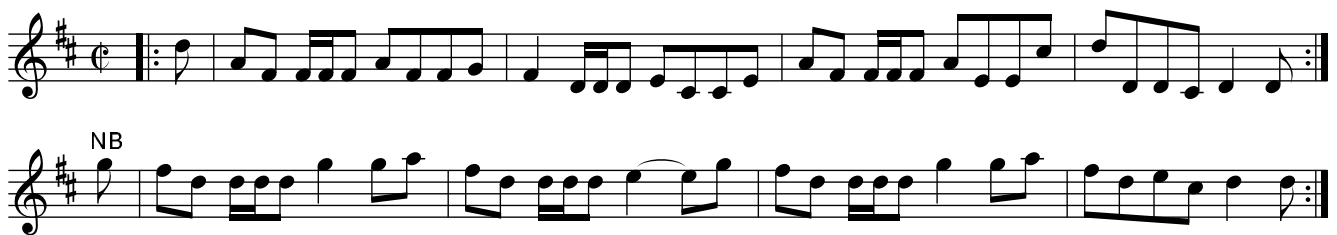
Cast off one Cu. and Hands across with the 3d Cu. .|
 Cast up and Hands across with the 2d Cu. :| Cross
 Over half Figure .|. Right Hand and Left :|

Seven Stars. Ru1.021



The first man sets to the 2d Wo. & turns her .|
 The same to the 2d Man :| Cross over two Cu. :|.
 Lead up to the Top Foot it & cast off :||: Foot it
 Corners & turn Foot it the other Corners & turn :||
 Lead out each side & turn your Partner :|

Strath Spay Reel. Ru1.022



The first & 2d Cu. Foot it all four and Hands
 Across quite round .| The same back again :|
 Gallop down the Middle up again & cast off .|.
 Lead through the Bottom & Lead through the Top
 And cast off :||: Foot it Corners & turn :|| Foot it
 The other Corners & turn :||. Lead out each side and
 Turn your Partner :|

I don't care whither or no. Ru1.023



Hey contrary sides .| Hey on your own sides :| Lead
Through the Top Cu. & cast off and Hands round
Four with the 3d Cu. .|. Lead through the Top Cu.
And cast off and right Hand and Left :|

Splash'd Petticoat. Ru1.024



Cast off one Cu. and Hands round with the 3d
Cu. .| Cast up and Hands round with the 2d
Cu. :| Clap Hands to your Partner Cross over one
Cu. .|. Clap Hands again :| Right Hand and Left :|

Petticoat loose. Ru1.025



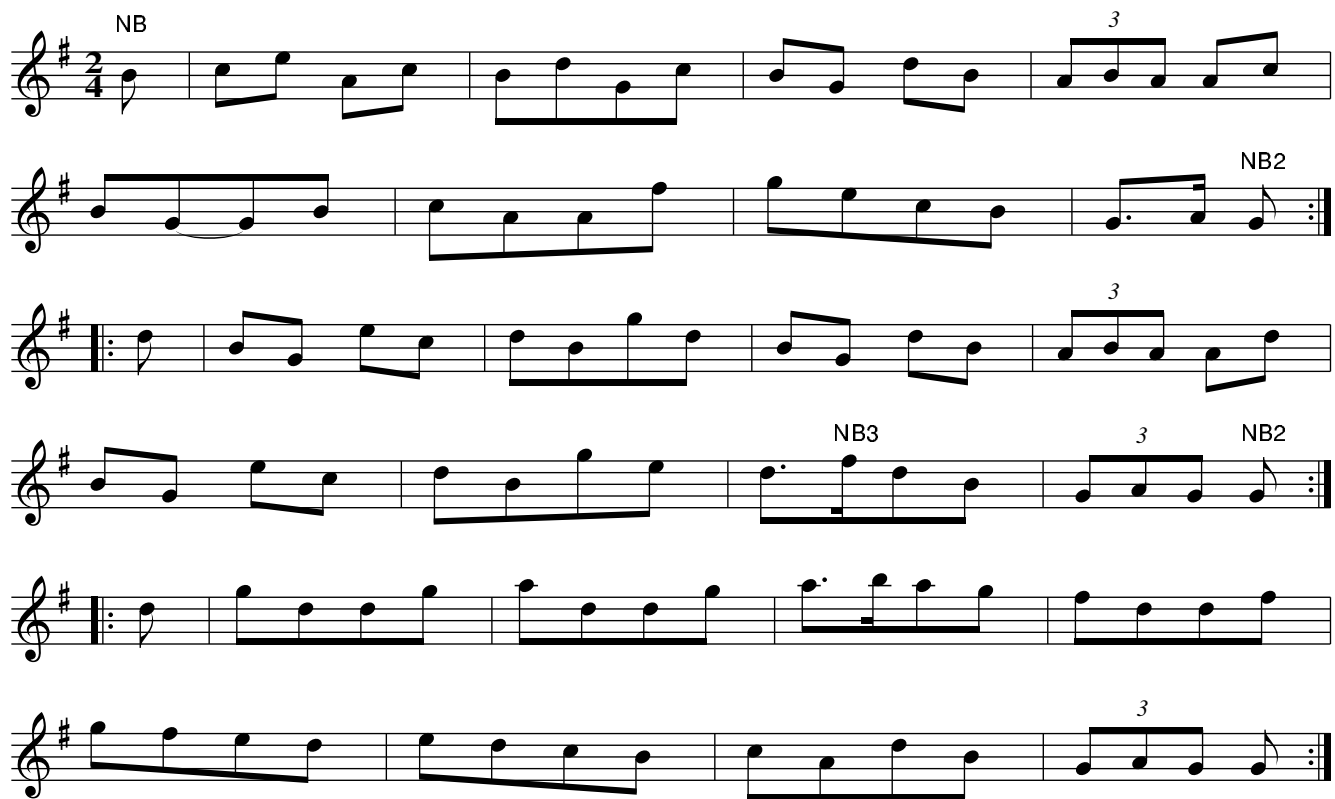
Foot it and cast off two Couple .| Foot it & cast up again :|
 Cross over two Cou. lead up to the Top, foot it & cast off .|.
 Lead thro' the Bottom Cou. and turn your Partner Right
 Hand, & Left at Top :|

Breeches loose. Ru1.026



Cast off & Hands round four with the 3d Cou. .|
 Cast up & Hands round four with the 2d
 Cou. :| Gallop down the Middle & up again
 and cast off .|. Right Hand & Left with the
 top Couple :|

John Barton. Ru1.027



The first Man sets to the 2d Wo. & turn her .| The first Wo.
does the same with the 2d Man :| Cross over two Cous. .|.
Lead up to the Top & cast off :|| Hands round with the
Bottom Cou .|| Right & Left at Top :||

Scots Bonnet. Ru1.028



The first & 2d Cou. foot it all 4 & Hands across
half round .| The same back again :| The first
Man foot it to the 2d Wo. & turn her .|. The 1st
Wo. does the same with the 2d Man :|| Cross over
half Figure .|| Right Hand & Left :||

Hob or Nob. Ru1.029
The Cambells are Coming, aka. Ru1.029



The first Man leads his Partner half round the 2d Cou. .|
Lead back again :| Cross over 2 Couples .|. Lead up
to the Top foot it & cast off :|| Foot it corners & turn .||
Foot it the other corners & turn :|| Lead out each Sides
and turn your Partner :|

The Rakes of Rochester. Ru1.030



Cast off one Cou. & turn your Partner .| Cast up
again & turn her :| Foot it & Hands across with
the 2d Cou. .|. The same back again :|| The first
Man foot it to the 2d Wo. & turn her .|| The first
Wo. does the same with the 2d Man :|| Cross over
and half Figure .|| R[igh]t Hand & Left :|

The Merry Scot. Ru1.031



The first Man set to the 2d Wo. & turn her .| The 1st
Wo. do the same with the 2d Man :| Cross over two
Couples lead up to the Top floor it & cast off :|| Foot it
Corners & turn :|| Lead out Sides & turn :|

The New Tambourin. Ru1.032

Bagpipers, aka. Ru1.032



Cast off one Cou. & cross over below the 3d Cou. .|
Cast up & cross up into your own Places :| Cross
over & half Figure Right Hand & Left :|

The Highwayman. Ru1.033



The Man casts off his Partner follows him she back
again & her Partner follows her, the Wo. back to back
with the 2d Man, whilst het Partnet does the same with
the 2d Wo. the first Cou. back to back, the all 4 Hands
round & right & Left half way.

The New Highland Laddy. Ru1.034

Kate Dalrymple, aka. Ru1.034



The first Cou. set to the 2d Wo. but not turn .|
The same to the Man :| Cross over 2 Cou. .|.
Lead up to the Top, foot it & cast off :||: foot it
Corners & not turn .|| foot it the other Corners &
not turn :|| Lead out each Side & turn your Partner :|

Mother quoth Hodge the new way. Ru1.035



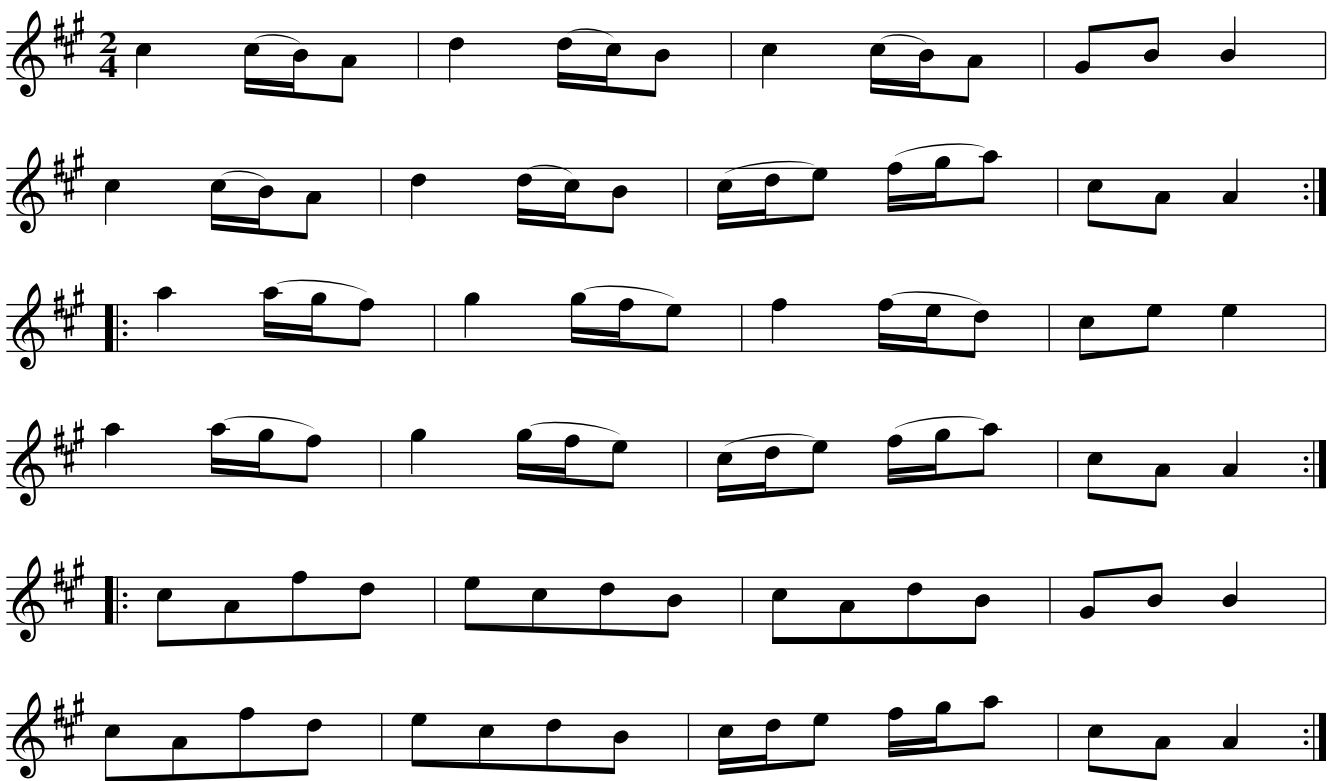
Cast off one Cou. .l Cast up again :l The first Man
bows to his Partner then bow to the Sides, cross over
and half Figure .l. Then bow to your Partner & bow
to the Sides Right Hand & Left :l

Country Farmer. Ru1.036



Cast off one Cou. .l Cast up again :l Cross over
and turn your Partner .l. The 2d Cou. doe the
same :ll: The first Man leads his Partner behind
the 2d Man & leaves her in the 2d Man's Place
then lead through the Man's Sides & half
Figure with your Partner at Top :l

The Lady's Favourite. Ru1.037



The first Cou. foot it to the 2d Wo. & Hands round three .! The same to the 2d Man :! Cross over two Cou. lead up to the Top foot it & cast off :||: Hands round 4 at Bottom .|| R[igh]t Hand & Left at Top :||

The Hungarian March. Ru1.038



The first Cou. gallops down the Middle the Man brings the 3d Wo. up & leave his Partner in her Place .! Then gallop down again leave the 3d Wo. in her Place and bring your own Partner up Cross over figure in .!. And R[igh]t Hand & Left :!

Lady Berkley's Whim. Ru1.039

Lord Holderness' Rant, aka. Ru1.039



Lead down between the 2d Cou. & without Side the 3d Cou. :|
 Lead up between the 3d Cou. & without Side the 2d :|
 foot it Corners & turn :|. foot it the other Corners & turn :|
 Lead out Sides & turn :|| Lead out the other Sides and
 turn :|| Foot it to your Partner & turn :|

Over the Water. Ru1.040

..to Charlie, aka. Ru1.040



Cast off & Hands round four with the Bottom
 Cou. :| Cast up & Hands round four with
 ye 2d Cou. :| Gallop down the middle & up
 again and cast off :|. Hands round all Six :|

Petticoat tight. Ru1.041



Hay contrary Sides .! Hay on your own Sides :!
 Cross over two Couples .!. Lead up to the Top foot it
 and cast off :!

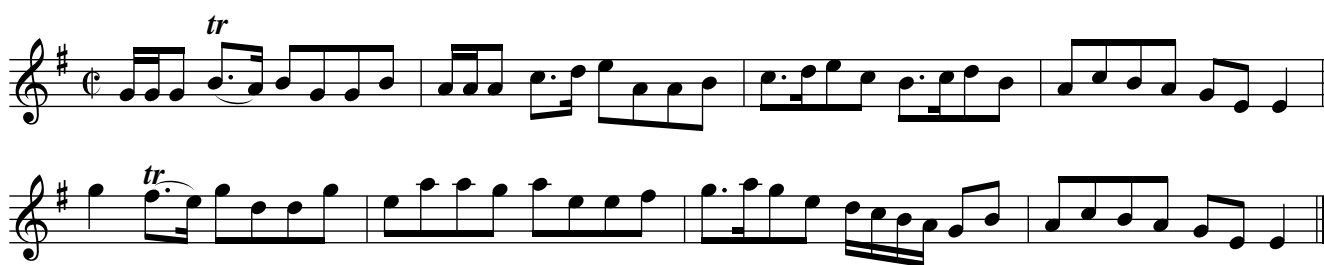
Prince George. Ru1.042



Cast off one Cou. .! Then the Wo. falls in at
 Bottom the Man at Top :! Set all six then
 turn your Partner .!. Fall in Sides & turn your
 Partner :!

Foots Vagaries or... Ru1.043

Green grows the Rashes. Ru1.043



The first Cou. foots it to the 2d Wo. & turns her .!|
 The same to the 2d :! Cross over 2 couples Lead up
 to the Top. foot it & cast off :||: Set Corners & turn .!|
 Set the other Corner & turn :|| Lead out Sides and
 turn your Partner :!

Fausans Maggot. Ru1.044



Foot it & cast off 2 Couples .! Foot it and
 cast up again :! Gallop down the Middle &
 up again & cast off .!. Rt Hand & Left :!

Eltham Assembly. Ru1.045



The first Cou. leads down between the 2d Cou. foot it
lead up again & cast off .l do the same with the 3d.
Cou. :l Clap Hands Sides & to your Partner and
right Hand & Left up into the 2d Couples Place .l.
Hands round all six & turn :l

Moll Ross. Ru1.046



The first Cou. sets to the 2d Wo. .l The same to
the Man :l Lead down between the 2d Cou. &
without the 3d and turn your Partne .l. Lead
up to the Top foot it & cast off :ll: foot it Corners
but not turn :ll Hands round all six .ll. Rt. Hand
and Left at Top :l

Cameronian's Rant. Ru1.047



The first Man sets to the 2d Wo. and turns her .! The first Wo. does the same with the 2d Man :! Cross over 2 Couples lead up to the Top & cast off .! Foot it to your Partner & back to back :|| Rt Hand & Left

Jollity. Ru1.048



The first Cou. gallop down one Cou. & up again & cast off .! Do the same with the 3d Cou. :! Lead up to the Top foot it & cast off .! Hands round all six :!

Cream Pot. Ru1.049



Cast off one Cu. & turn your Partner .| The 2d Cu. does the same :| Cross over two Cu. Lead up to the Top Foot it & cast off .|. Hands across quite rond with the 3d. Cu. Right Hand & Left with the Top Cu. :|

Suky bids me. Ru1.050



Cast off & turn your Partner .| Cast up & turn your Partner :| Cross over two Cu. .|. Lead up to the Top Foot it & cast off :||: Foot it Corners & turn .|| Foot it to the other Corners & turn :|| Lead out each Side? and turn your Partner :|

The Retreat. Ru1.051
The Banks of the Dee, aka. Ru1.051



The first Cu. sets to the 2d.
Wo. but not turns .! The same
to the Man :! Gallop down &
up again & cast off _
Lead Thro' the Bottom cast up & turn your
Partner cast up to the Top :!| Hands across half round .!| And
Back again ????? (unreadable after this)

Dumb Waiter. Ru1.052



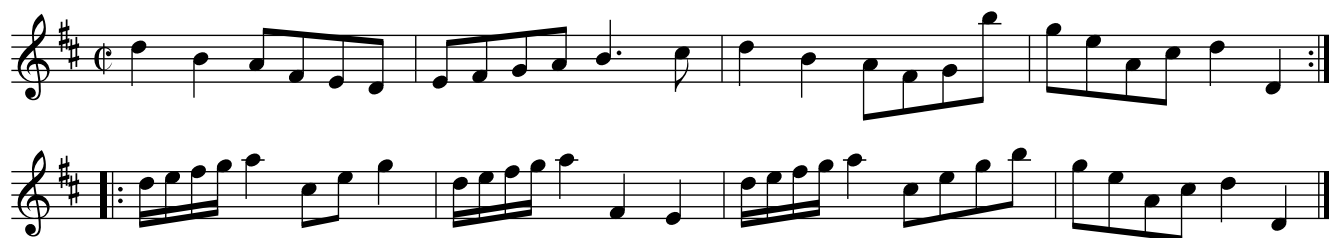
The first Man sets to the 2d. Wo. & turns her .!
The first Wo. does the same with the 2d. Man :!
Cross over half Figure Lead through the Bot
tom & cast off Foot it to your Partner Right
Hand and Left

Antigua Billey. Ru1.053



Foot it to your Partner clap Hands three times & cast off .| The
 same up again :| Cross over half Figure .| Lead thro' the 3d. Cu.
 and cast up .|. Into the 2d. Cus. place :|| Foot it Corners & turn
 your Partner .|| Foot it the other Corners & turn your Partner :|| Lead
 up thro the 2d. Cu. & cast off .||. Right Hands & Left with the Top Cu. :|

Pretty Bell. Ru1.054



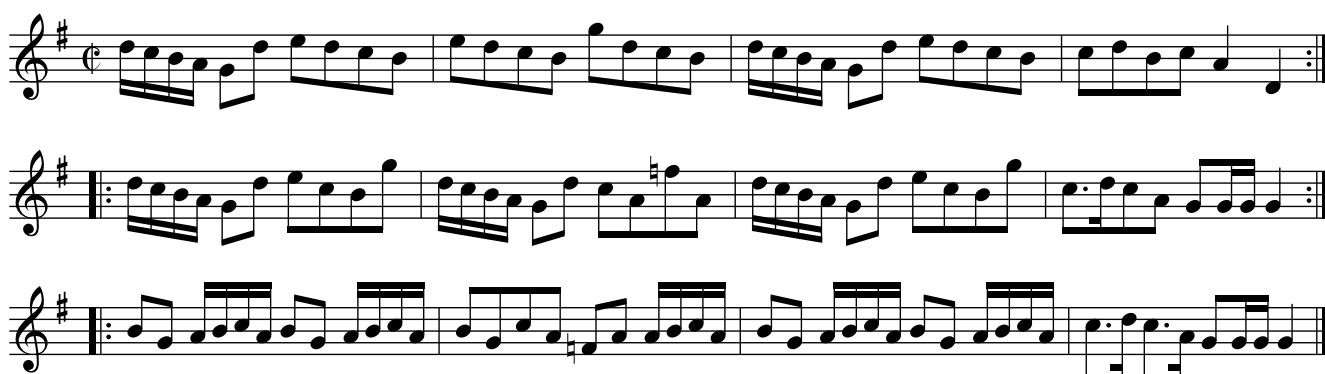
Cast off one Cu. .| Cast up
 again :| Gallop down and up
 again and cast off .|. Right
 Hasnd and Left :|

Trip to the Jubilee. Ru1.055



The first Man sets to the 2d. Wo. & turns her .| The first Wo. does the same with the 2d. Man :| Foot it all fours & Hands across half round .|| The same back again :|| Gallop down & up again & cast off .||| Right Hand and Left :|||

Lucy's Delight. Ru1.056



The first Cu. sets to the 2d. Wo. and Hands round Three .| The same to the Man :| Cross over two Cu. .|| Lead up to the Top Foot it & and cast off :|| Hands round four at Bottom .||| Right Hand and Left atTop |||

Rangers Frolick. Ru1.057
Whip Her and Gird Her, aka. Ru1.057



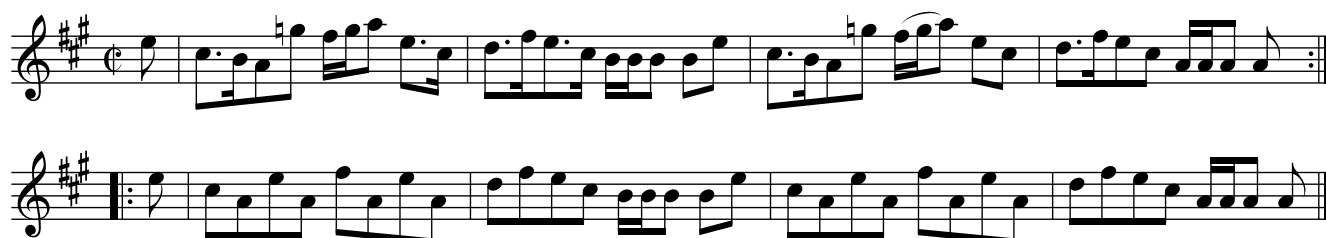
The first Man sets to the 2d. Wo. & turns her .| The first Wo.
& 2d. Man does the same :| Cross over two Cu. .|| Lead up to
the Top Foot it & cast off :||: Hands across half round & back
again .||| Right Hand and Left :|

Foster Meads. Ru1.058



The first Cu. Foot it to each other &
Clap Hands & cross over into each
others place .| Foot it sides & Clap
Hands & cast off :| Half Figure .|.
Right Hand and Left :|

Because I was a Bonny Lad. Ru1.059



The first Cu. Foot it & cast off two Cu .| Foot it
& cast up again :| Cast off off the Wo. falls in between the
Bottom Cu. the Man between the Top Cu. & Foot it
to each other .|. Then the Man falls in of the Woman's
side & the Wo. of the Mans side & Foot it :||: Foot it
Corners & turn .|| Foot it the other Corners & turn :||
Lead out each side & turn :|

The Drummer. Ru1.060



The first Cu. sets to the 2d. Wo. & Hands round all three .| The same to the Man :| Hands round all four with the 2d. Cu. .|. Right Hand & Left into the 2d. Cus. place :|| Foot it Corners and turn .|| Foot it the other Corners & turn :|| Hey Contrary sides .|| Foot it to your Partner and turn it out :|

Newgate Broth. Ru1.061



The first Cu. cast off two Cus. .| Lead up the Middle Foot it & cast off :| The first Man Foot it to the 2d. Wo. & Hands round three .|. The same to the Man :| Foot it Corners & turn .|| Foot it the other Corner & turn :|| Hey contrary sides || Foot it to your Partner & turn ????:|

The Chaplet. Ru1.062



The first Man sets to the 2d. Wo. & turn her .! The first
 Wo. does the same to the 2d. Man :! Cast off & Lead thro'
 the 3d. Cu. cast up Lead thro' the 2d. Cu. & cast off .!.
 Back to Back with your Partner Right Hand & Left at Top

Hemp Dressers. Ru1.063



All the Cous. takes their Partner by the Hand &
 Lead up to the Top the first Cu. Casts off & the rest
 all follows then Lead up to the Top & all cast
 off again Lead up to the Top & stand in your
 proper places Cross over & turn till you come to yr.
 own Places. Cast off & turn. Half Figure. Right & left.
 Hands all round. Right & left all round. Note, at the
 end of every Change lead up & cast off, as above.

Jack on the Green. Ru1.064



The first Cu. set & cast off one Cu. set & cast off
 again .| set & cast up again :| Cross over one Cu. & Foot
 it cross over again & Foot it :| Then the Man Right
 Hand & Left quite up to the Top on the Womans side &
 the Wo. on the Mans side at the same time .|| Then Right
 Hand & Left down two Cu. on your own sides Hands
 round all six with the 2d. & 3d. Cu. .|| Lead up to the
 Top Foot it & cast off :|

Merry Dancers. Ru1.065
The Highway to Eglinton



The first & 2d. Cu. Foot it and Right & left half round .| Then
Foot it and Right Hand & Left up to the Top :| Foot it and
Hands across quite Round .|| The same back again :|| Cross over
two Cu. .||| Lead up to the Top Foot it & cast off |||

The Star. Ru1.066
The Scheme, aka. Ru1066



The first Cu. cast off one Cu. .|
Cast up again :| Gallop down one
Cu. and cast off .|. Right Hand
and Left :|

Fox-hunter's Jig. Ru1.067



Foot it Hands across all four .| Foot it and the
same back again :| Gallop down the Middle up
again & cast off .|. Right Hand and Left :|

Merry Wakefield. Ru1.068



Lead through the 2d. Cu. & cast up to the Top .|
Back to Back & cast off :| Hands round four
with the 2d. Cu. .|. Right Hand and Left :|

Barly Sugar. Ru1.069



Foot it & Hands across half round with the 2d.
 Cu. .l The same back again:| Cross over two Cu.
 .l. Lead up to the Top Foot it & cast off :|

Handel's Hornpipe. Ru1.070



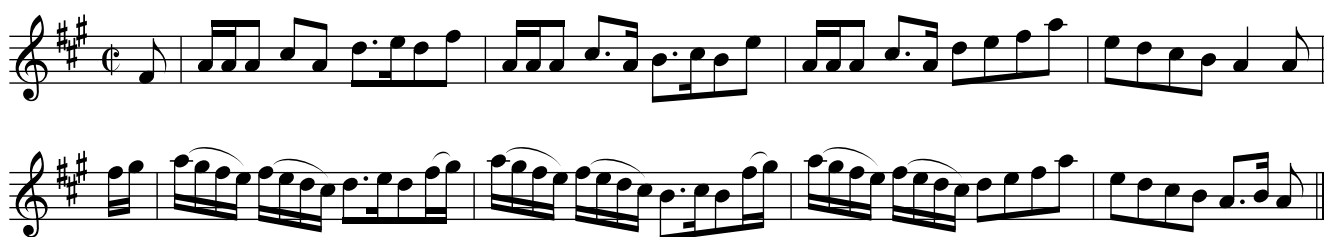
The first Cu. cast off one Cu. & turn your Partner
 .l Cast off & turn again :| Lead up to the Top
 Foot it & cast off & turn your Partner .l. Foot it
 & clap Hands to your Partner Right Hand & Left
 at Top :|

Jenny Dang the Weaver. Ru1.071



Foot it & cast off turn .! The 2d. Cu. does the same :!
 Cross over two Cu. .!. Foot it to your Partner & cast
 up into the 2d. Cous. place :||: The man sets to the Top
 Wo. & turns her .|| The Wo. does the same to the Top
 Man :|| Foot it to your Partner & the Man casts off
 & the Wo. casts up .||. Foot it again & the Man casts
 up & the Wo. cast off :!

Up and war them a Willie. Ru1.072



The first Cu. Figure thro. the 2d. Cu. & cast up & Foot
 it at Top .! The 2d. Cu. do the same :! Then all four
 take Hands the first Cu. Lead up & the 2d. Lead down
 at the same time .!. Then the first & 2d. Cu. Minuet
 step & first Cu. cast off :!

Queen's Burry House. Ru1.073



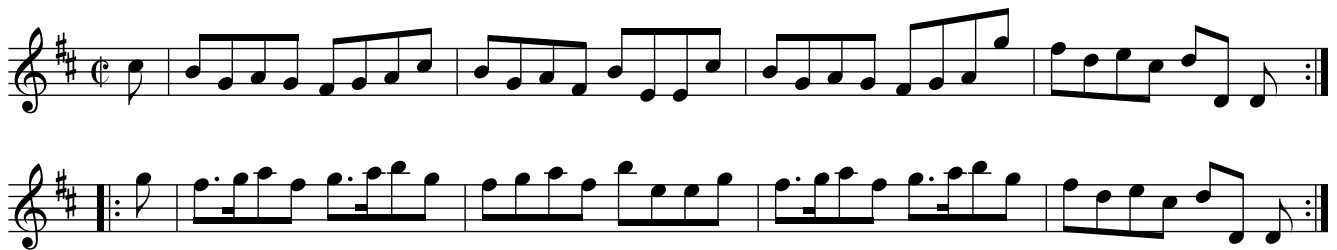
Hands across quite round with the 2d. Couple
 and cast off, .! The same with the third
 Couple, :! Lead up to the Top. Foot it and
 cast off .!. Right Hand and Left :!

Kick the Scrubs out. Ru1.074



Cast off two Couple .l Lead up to the Top,
foot it and cast off, :l Hands round all four
with the third Couple .l. Right Hand and Left
:l

The Battle of Culleden. Ru1.075



Cast off one Couple and Lead through the
third Couple .l Cast up again and Lead
through the second Couple :l Cross over
two Couple .l. Lead up to the top, foot
it and cast off, :l

Miss Murry's Reel. Ru1.076



The book shows the whole tune with no sharps or flats

Hands acr(o)ss half round with the second
Couple, .l the same back again, :l Hay
contrary sides, .l. Hay on your own sides,
:ll: The first man turns the second woma(n)
.ll The first woman does the same :ll
Cross over two Couple .ll. Lead up to the top
foot it and cast off, :l

Wett & weary. Ru1.077



Cast off one Couple .| Cast off
another Couple :| Lead up to the
top, foot it and Cast off :|| Hands
across half round with the second
Couple .|| The same back again :|| Right
Hand and Left quite round with the 2d.
Couple.

Jack Holme's Reel. Ru1.078



Cross over two Couple .| Lead up to the top foot
it and Cast off :| foot it Corners and turn .|. foot
it the other Corners and turn your own partner :|

The Royal Sovereign. Ru1.079



Cast off below the 2d Couple and Lead through the 3d.
 Couple .! Cast up to the top and Lead through the
 2d. Couple :! Cross over two Couple .!. Lead up to
 the top foot it and Cast off :||: Hay Contrary sides .||
 Hay on your own sides .||. foot it Corners and turn
 .||. foot it the other Corners & turn your own partners

The Duke's Reel. Ru1.080



The first and 2d. Couple turns their partne(r)
 half round and then sides half round .! th(en)
 turn partners again then sides into your
 own places Cross over and half figure .!.
 Right hand and Left :!

Jack's Delight. Ru1.081



The first man Casts off and turns the 3d. woman
and remains in the 2d. man's place. | the first
woman does the same: | Hands Round all six
.l. Right Hand and Left :|

As you like it. Ru1.082



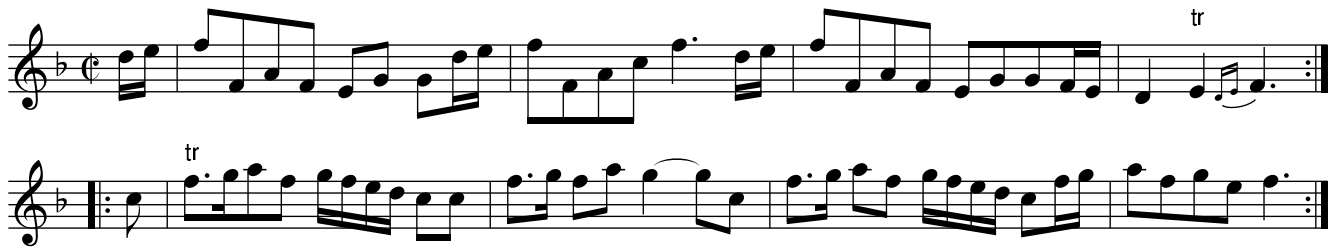
The first and 2d Couple foots it and Hands Round
all four .l the same back again: | Cross over
two Couple .l. Lead up to the top foot it,
and Cast off :|

Irish Whim. Ru1.083



Cast off and turn your partner. | Cast off again
and turn :| Lead up to the top and Cast off .l.
Right Hand and Left :|

Maxwill's Rant. Ru1.084



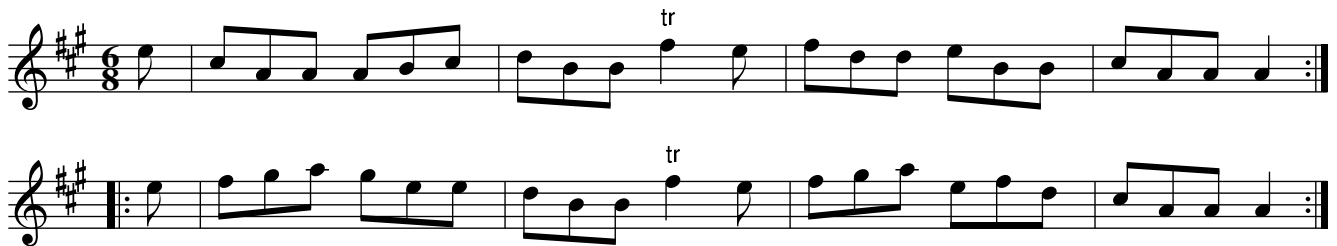
Hay Contrary sides .l Hay on your own sides :l
 Cross over and half figure .l. Lead through the
 3d. Couple and cast up into the 2d. Couples place
 and turn it out :l

Quite Prodigious. Ru1.085



Foot it and hands across quite round with the 2d.
 Couple .l the same back again :l Cross over and
 half figure .l. Right hand and Left :l

None Like it. Ru1.086



Cast off one Couple .l Cast up again :l Lead
 down the middle up again and Cast off :||: whole
 figure with the 3d. Couple :|| Right hand and
 Left with the 2d. Couple :l

The Highway to Eglington. Ru1.087



The first man hays with his partner and
the 2d. woman .l the first woman does
the same :l Gallop down the middle and
up again and Cast off .l. Right hand
& Left :l

The Wives of Torphican. Ru1.088



Foot it back to back and Cast off one Couple .l foot
it back to back and Cast off another Couple :l Lead
up to the top foot it, and Cast off .l. Right hand and
Left :l

Scotch Scollops. Ru1.089



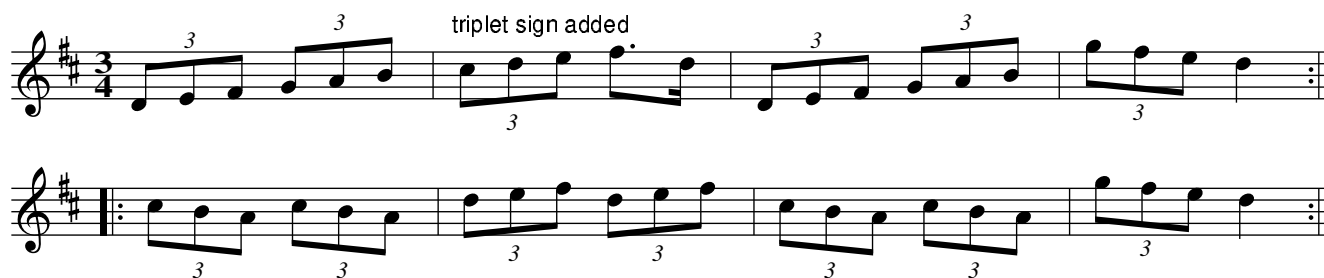
Cast off and turn your partner .l Lead
through the 3d. Couple Cast up and turn
hands round all six .l. Right hand and
Left :l

Molly's Delight. Ru1.090



The first man sets to the 2d woman .l the first
woman does the same :l Gallop down and up again
and Cast off .l. Right hand and Left :l

Duke's Birthday. Ru1.091, The



The first Couple turns the 2d. woman .| the same
with the 2d. man :| Gallop down the middle up again
and Cast off :|| Hands across half round with the 2d
Couple .|| the same back again :|| the first & 2d.
Couple follows each other half round .||. Right
hand & Left into the 2d. Couple's place :|

Ambigno. Ru1.092



Cast off one Couple .| Cast up again :| Cross
over and half figure :|| Hands across half round
with the 2d. Couple .|| The same back again :||
Right hand & Left quite round with the 2d.
Couple :|

I know something. Ru1.093



Cast of [sic] one Couple .| Cast off again :|
Lead up to the top foot it & Cast off .|.
Right hand & Left quite round with the
2d. Couple :|

Beverly Assembly. Ru1.094



The first man turns the 2d. woman .l the first
woman turns the 2d. man :l Gallop down & up again
and Cast off .l. Right hand & Left :l

The House of Gray. Ru1.095



Hands across quite round with the 2d Couple
and Cast off .l the same with the 3d Couple:l
Lead up to the top, foot it and Cast off.l.
Right hand & Left :ll: foot it Corners &
turn .ll foot it the other Corners and turn:ll
Hay Contrary sides .ll foot it to your
partner and turn it out :l

Dumond's Jigg. Ru1.096



Cast off one Couple .! Cast up again :! Cross over
and half figure Lead through the 3d Couple and Cast
up into the 2d Couples place .!. Right hand & Left
quite round with the 2d Couple and turn your partner :!

Campbel's Frolick. Ru1.097



Foot it all 4 and Hands across & cast off .!
The same with the 3d. Cu. :! Lead up to the
Top foot it & cast off Hands round all 6
& turn your Partner :!

Negroe. Ru1.098, The



The first Man sets to the 2d. Wo. & turns :| The first Wo. does the same :| Cross over two Couple Lead up to the Top foot it & cast off Lead through the Bottom Right Hand and Left at Top :|

The Parson in the Sudds. Ru1.099

Devil in a Bush, aka. Ru1.099



the first Man sets to his Partner & turns the 2d. Wo. | The first Wo. does the same :| Cross over 2 Cu. Lead up to the Top foot it & cast off :|| Foot it Corners & turn :|| Lead out sides & turn your Partner :|

The Wild Goose. Ru1.103



The first Couple sets to the 2d. Wo. & Hands
round 3 .! the same to the Man :! Hands round
all 4 with the 2d. Couple .!. Right Hand & Left
into the 2d. Couples place :!

The Weezle. Ru1.104

Owlets and Weasels, aka. Ru1.104
Howlets and Weezles, aka. Ru1.104



The first Man sets to the 2d. Wo. & turn his
own Partner .! The first Wo. does the same with
the 2d. Man Lead down the Middle & up again
& cast off :! Right Hand & Left Quite round
with the 2d. Couple :!

Hooper's Jigg. Ru1.105



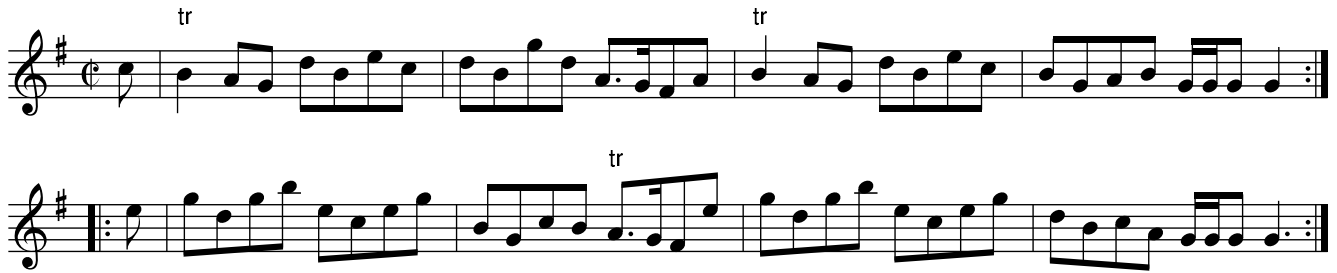
The first Couple Clap & cast off & Hands across
with the 3d. Cu. .| Clap & cast up & Hands across
with the 2d. Cu. :| Cross over figure In .|.
Right Hand & Left :|

Cream Cheese. Ru1.106



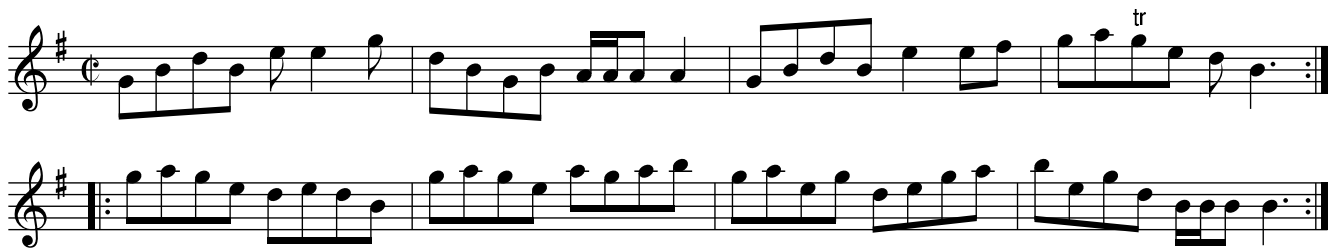
The first Man sets to his Partner & turn the 3d.
Wo. .| The first Wo. sets to the 2d. Man & turns
the 3d. Man :| whole figure at Top .|. Lead
through the 3d. Cu. & turn your Partner :|

Merry Lads of Huntingtower. Ru1.107, The



Foot it & cast off 2d. Cu. .l Foot it & cast up again :l
 Cross over 2 cu. Lead up to the Top foot it & cast
 off foot it Corners & turn :ll Lead out sides &
 turn your Partner

Sigr. Fiddlidee. Ru1.108



The first Couple cross over and turn .l Cross up
 again & turn :l foot it & Hands across with the
 2d. Cu. the same back again :ll: foot it to the
 2d. Wo. & turn .ll The Wo. does the same with
 the 2d. Man :ll Cross over & half figure right
 Hand & Left :l

The Capuchin. Ru1.109



Cast off & turn your Partner .l Cast up again
 & turn :l Foot it all 4 & Hands across Quite
 Round .l. The same back again :ll: The first Man
 sets to the 2d. Wo. & turns .ll The first Wo.
 does the same with the 2d. Man :ll Cross over
 half figure :ll Right Hand & Left :l

The Muffin. Ru1.110



The first Cu. Cast off & Hands across with the
 3d. Cu. :| Cast up and Hands across with the 2d.
 Cu. :| Cross over & half figure :|. Right Hand &
 Left :|

Bonny Betty. Ru1.111



The first Man sets to the 2d. Wo. & turn her :|
 The first Wo. does the same :| Cross over 2 Cu.
 Lead up to the Top foot it & cast off :||: Lead
 through the Bottom & turn your Partner Lead
 through the Top & turn your Partner

Patty from Cork. Ru1.112



Foot it & cast off one Cu. .! Foot it & cast off
again :! Lead up to the Top Foot it & cast off :!
Right Hand & Left with the Top Couple :!

The Punch Bowl. Ru1.113



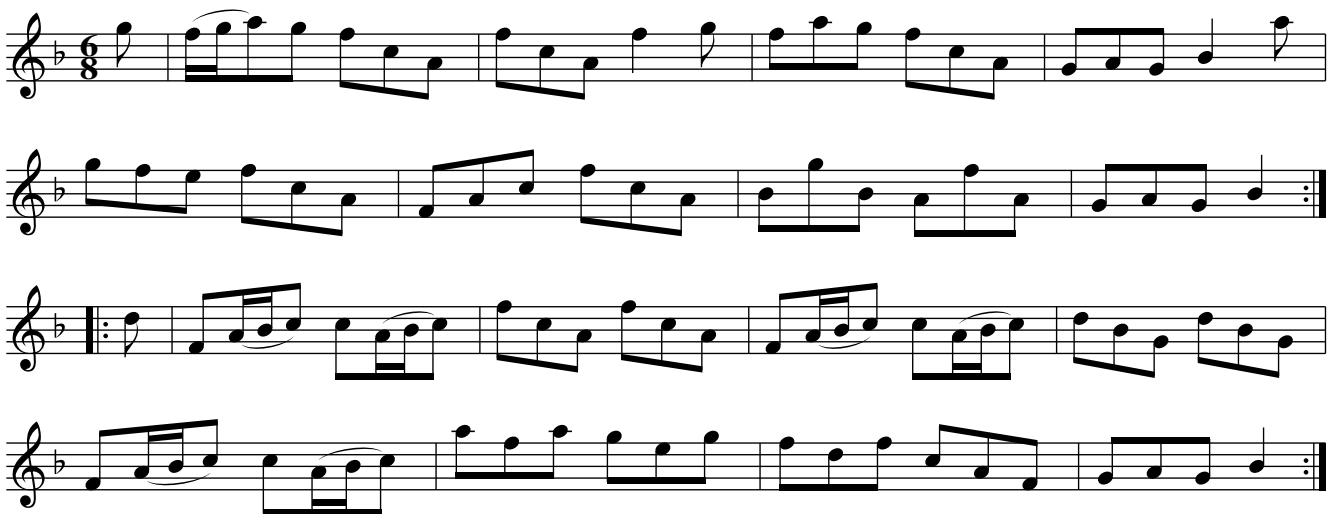
Cast off & turn your Partner .! Cast up again &
turn cross over 2 Cu. Lead up to the Top foot
it & cast off Lead through the Bottom & turn
your Partner right Hand & Left at Top :!

Edinburgh Jigg. Ru1.114



The first Man cast off & turn the 3d. Wo. and stand in the 2d. Man place .! The first Wo. does the same to the 3d. Man & stand in the 2d. Wo.s place :! Hand round all six .! Right Hand and Left at Top :!

The Fumbler. Ru1.115



The first Cu. Clap Hands & cast off & Lead through the 3d. Cu. .! The 2d. Cu. does the same :! Cross over & half figure .! Then Hands round all six & turn your Partner

Grant's Reel. Ru1.116



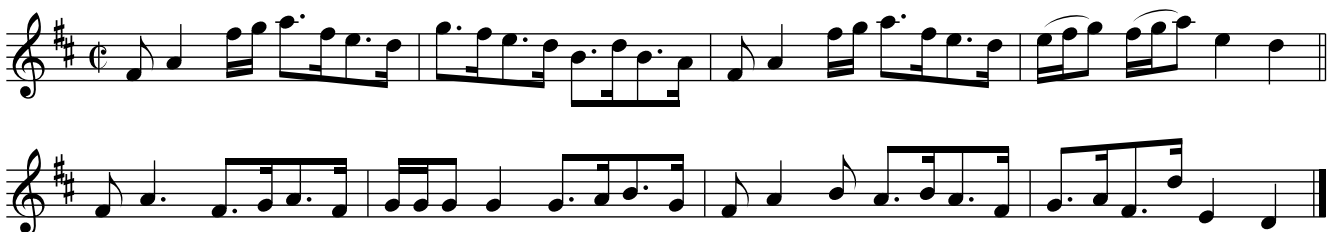
The first Man sets to the 2d. Wo. & turn her .l
 His Partner does the same with the 2d. Man :l
 Cross over 2 Cu. Lead up to the Top foot it &
 cast off .l. Back to Back with your Partner
 Right Hand & Left Quite round with the 2d. Couple

Will with a Wisp. Ru1.117



The first & 2d. Cu. foot it all 4 & Hands across
 half round thye same back again :l Gallop down
 & up again & cast off :ll Right Hand & Left
 with the 2d. Couple

McDonald's Rant. Ru1.118



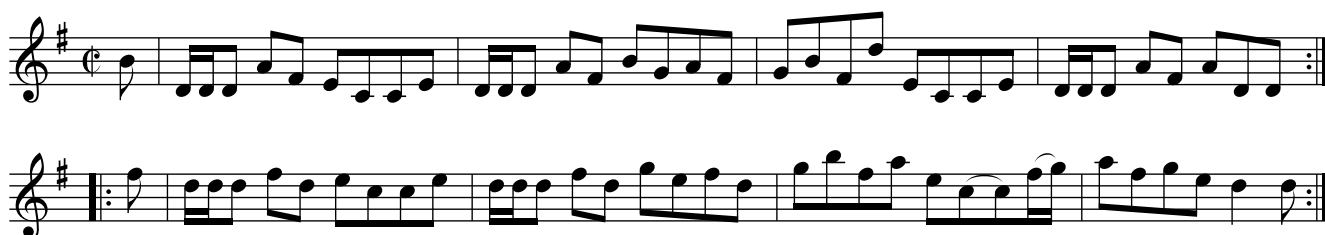
Foot it all Four & Hands across Quite round .l
 The same back again :l Cast off 2 Couples :l.
 Lead up to the Top foot it & cast off :ll: The first
 sets to the 2d. Wo. & turns her .ll the first Wo.
 does the same :ll Cross over & half figure :l
 Right Hand & Left :l

The Bull's Head. Ru1.119



The first Cu. Cast off & Hands round 4 with
the 3d. Cu. .l Cast up & Hands round with the
2d. Cu. Cross over & half figure .l. Right
Hand & Left :l

Bob's Whim. Ru1.120



Cast off & turn your Partner .l the 2d. Cu.
does the same :l Foot it & Hands round four
.l. Right Hand and Left :l

The Frolick. Ru1.121



Cast off & lead through the 3d Cou. & Hands round all four with the 2d Cou. :| Cast off behind the 3d Cou. lead up to ye Top. cast of[f] & Hands round with the 3d Cou. :| Set Corners & turn set the other Corners & turn :|. Hands round all six Right Hand & Left :|

Ash Wednesday. Ru1.122



The first Man cast off & the 2d Woman cast up & turn :| The first Woman & 2d Man does the same :| Galop down the middle & up again & cast :|. Right & Left

Beau Nash. Ru1.123



Clap Hands to your Partner turn her & Hand contrary
 Sides .! Clap Hands Sides & turn :! Cast off half
 Figure with the third Couple .!. Hands round all six :!

Lady Austa's Delight. Ru1.124



The first Couple leads down two Couples
 foots it & leads up again to their own Places .!
 The first Man turns the 2d Woman with
 his Right Hand the first Woman does the
 same :! Cross over two Couples .!. Lead up
 to the Top foot it & cast off :!

Keppoch's Rant. Ru1.125

Rant

NB



Hands four all round with the 2d Couple & cast off .! The same
with the 3d Couple :! foot it & right Hand & left up into the 2d
Couple's Place, & turn your Partner .!. Hands round all
six & turn your Partner :!

Tuzzimuzzy. Ru1.126



The first Man set to the 2d Woman
and turn with his right Hand .!
First Woman do the same :! Galop
down & up again & cast off .!.
Right Hand & Left :!

Lochiel's Rant. Ru1.127

Rant

The first Man sets to the 2d Wo. & turns her with his right
 Hand, & his Partner with his Left .! First Wo. does the same :!
 Lead own between the 2d Cou. & without side the 3d turn
 your Partner, lead up to the Top, foot it & cast off .!. foot it
 Corners & turn foot it the other Corners & turn y[ou] own Partner :!

No Sure. Ru1.128



First Man sets to the 2d Wo. & turn her .! The first
 Wo. does the same to the 2d Man :! Cross over 2 Couples
 Lead up to the Top foot it & cast off .!. Hands round
 four with the 3d Cou. Right & Left with the 2d Cou :!

The Highland Reel. Ru1.129



The First Man sets to the 2d Wo. & turn her .! The first Woman does the same :! Lead down the middle up again foot and cast off, foot to your Partner & turn her .!. Hay contrary Sides, hay on your own Sides :!

Lady McIntosh's Reel. Ru1.130



Cast off one couple .! Cast up again :! Lead down two Couples up again, foot it foot it & cast off :! Right Hand and Left :!

Whip the Cat. Ru1.131



The first & 2d Couple foots it & cast off & turn .! Foot it & cast off again & turn :! Cross over up to the Top right Hand & Left into the 2d Couple's Place :!

Miss in her own Hair. Ru1.132



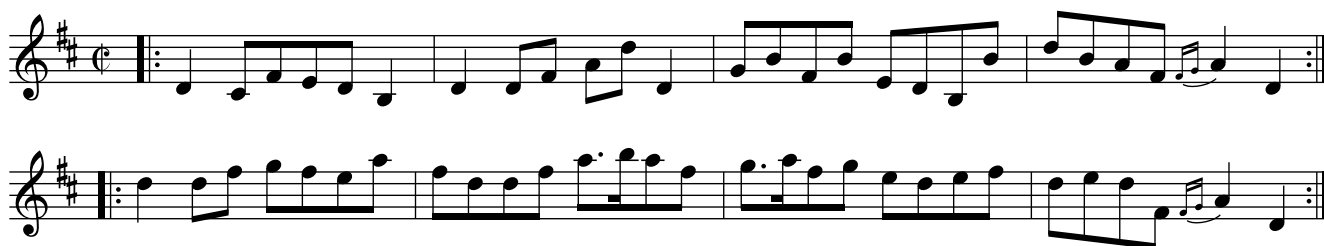
The first Couple turns the 2d Woman then
 turn the 2d Man .l. Lead down the middle
 .l. up again foot it & cast off :||: Foot it
 Corners & turn .l foot it the other Corners &
 turn :|| Hands round all six .

Lord Albermarles Delight. Ru1.133



The first sets to the 2d Woman & tuns her .l
 The first Woman does the same :l Cross over quite round
 the 2d Couple .l. Gallop down & up again foot & cast off :l

Miss Molly Scot's Rant. Ru1.134



Hands across quite Round .l The same back
 again :l Cross over figure in .l. Right Hand
 and Left :l

Alce Marley. Ru1.135

Elsie Marley, aka. Ru1.135



The first Man sets to the 2d Woman & turns her .! The first Woman does the same :! Foot it & Hands across .!. The same back again :! Cross over two Couple .! Lead up to the Top foot it & cast off :!

Monsieur Pantin. Ru1.136



The first Couple lead down between the 2d Couple & without Sides the 3d and turn .! Lead up to the Top, foot & cast off :! Hands round four with the 3d Couple .!. Right & Left with the 2d Couple :!

Patty's Whim. Ru1.137



Cast off one Couple & half Figure with the 3d Couple .l
 Cross up to the Top & half Figure with the 2d Couple :l
 Gallop down the Middle & up again & cast off .l.
 Right & Left :l

The Prince's Reel. Ru1.138



Foot to your Partner cast off & turn .l Lead
 thro' the 3d Couple cast up & turn :l Hands
 across quite round with the 3d Couple .l.
 Right and Left with the 2d Couple :l

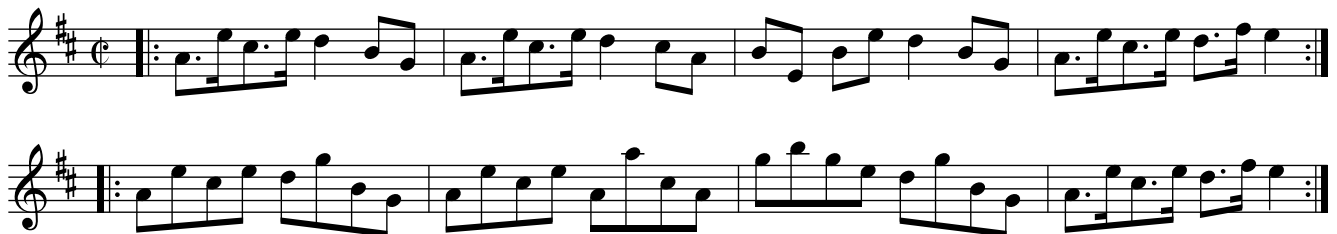
Lady Jane Murray's Rant. Ru1.139



The first Man casts off, & the 2d Woman casts up
at the same time & turns .! The first Wo. & 2d Man
does the same :! Hands across with the 2d Couple
& back again .!. Foot to your Partner & right
Hand & Left :!

Killie Kallom. Ru1.140

Ghillie Callum, aka. Ru1.140



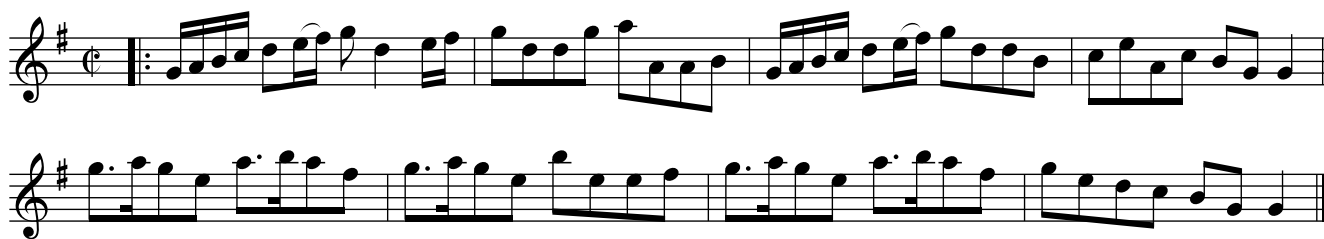
Cast off two Couple .! Lead up to the Top
foot it & cast off :! Hands round with the 2d
Couple .!. Right Hand & Left with the 2d Couple :!

Wellcome to the Country. Ru1.141



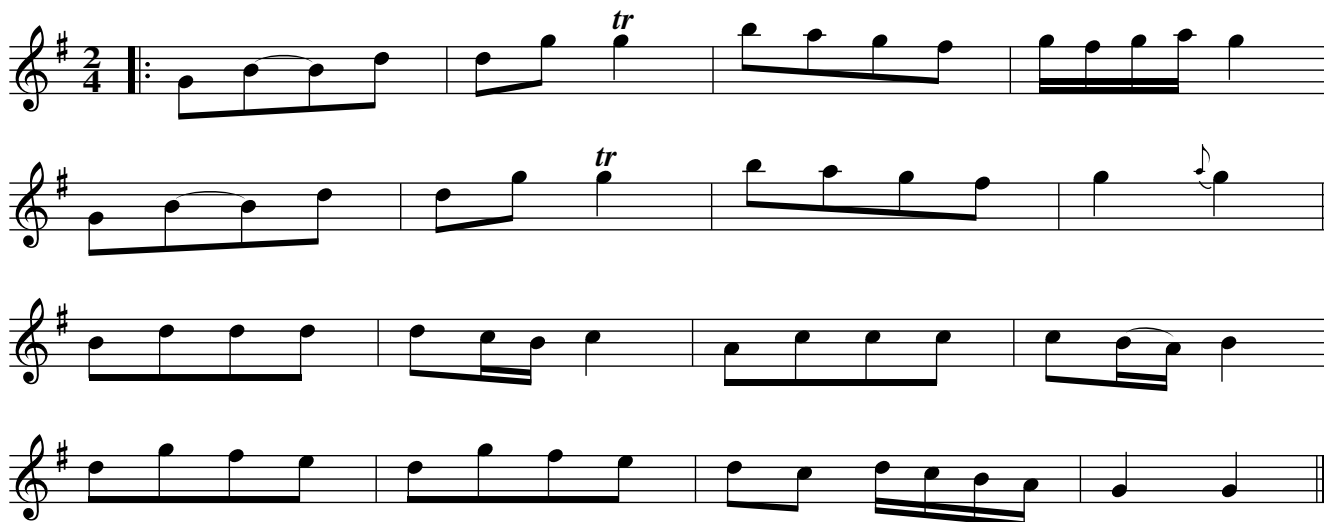
Cast up & turn your Partner .! Cast off again and
turn :! Lead up to the Top, foot it & cast off .!.
Right Hand & Left :!

The Drunken Wives of Aberdeen. Ru1.142



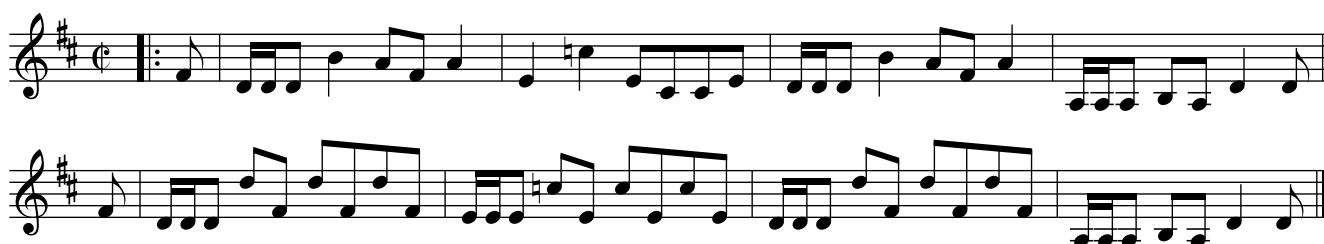
The first Man turns his Partner with his
right Hand, & Hands half round with the 2d Couple .|
The first Woman does the same :| Lead
down 2 Couples & up again & cast off .|
Lead thro the 3d Couple & cast up into the 2d
Couples Place, & turn your Partner :|

St James's. Ru1.143



Cast off & turn your Partner .| Lead thro' the 3d
Couple & cast up & turn :| Hands round all six :|
Right and Left _

The Cloak Bagg. Ru1.144



The first Man foots it to his Partner & turns
her & leaves her in his Place .| Foot it contrary
Sides & turn :| Gallop down two Coupl. up again
foot it & cross over .|. Hands round all Six :|

Grace's Farewell. Ru1.145



Half Figure with the 2d Cu. foot it and cast
off .l Half figure with the 3d Cu. and cast up
to the top cross over and half figure .l. Right hand
and Left :l

The Humors of Hillsborough. Ru1.146



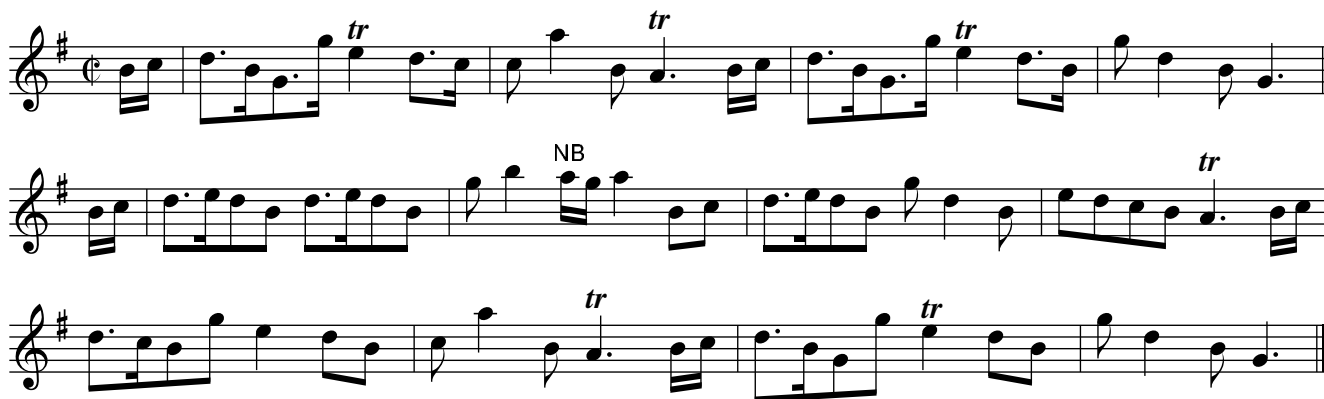
The [1]st Cu. Gallops Down and up again foot it
and cast off .l. the 2d Cu. does the same :l cross
over two Cu. .l. Lead up to the top foot it and
cast off :l

The Mistake. Ru1.147



The 1st Cu. foots it and hands across
quite round with the 2d Cu. .! The same Back
again :! Gallop down the middle and up again
Foot it and cast off :!

The Merry Councillors. Ru1.148



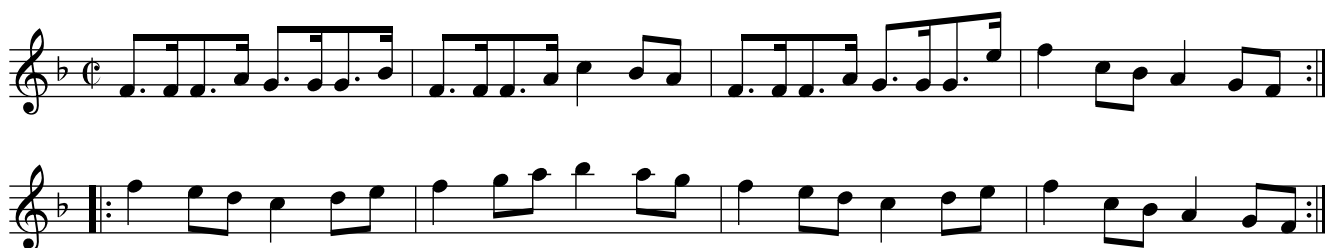
The 1st Cu. Casts off and turns .! Cast up again
and turn :! Cross over two Cu. Lead up to the
top foot it and cast off .! foot it to your Partner
and turn her right Hand and Left :!

The New Long Room at Scarborough. Ru1.149



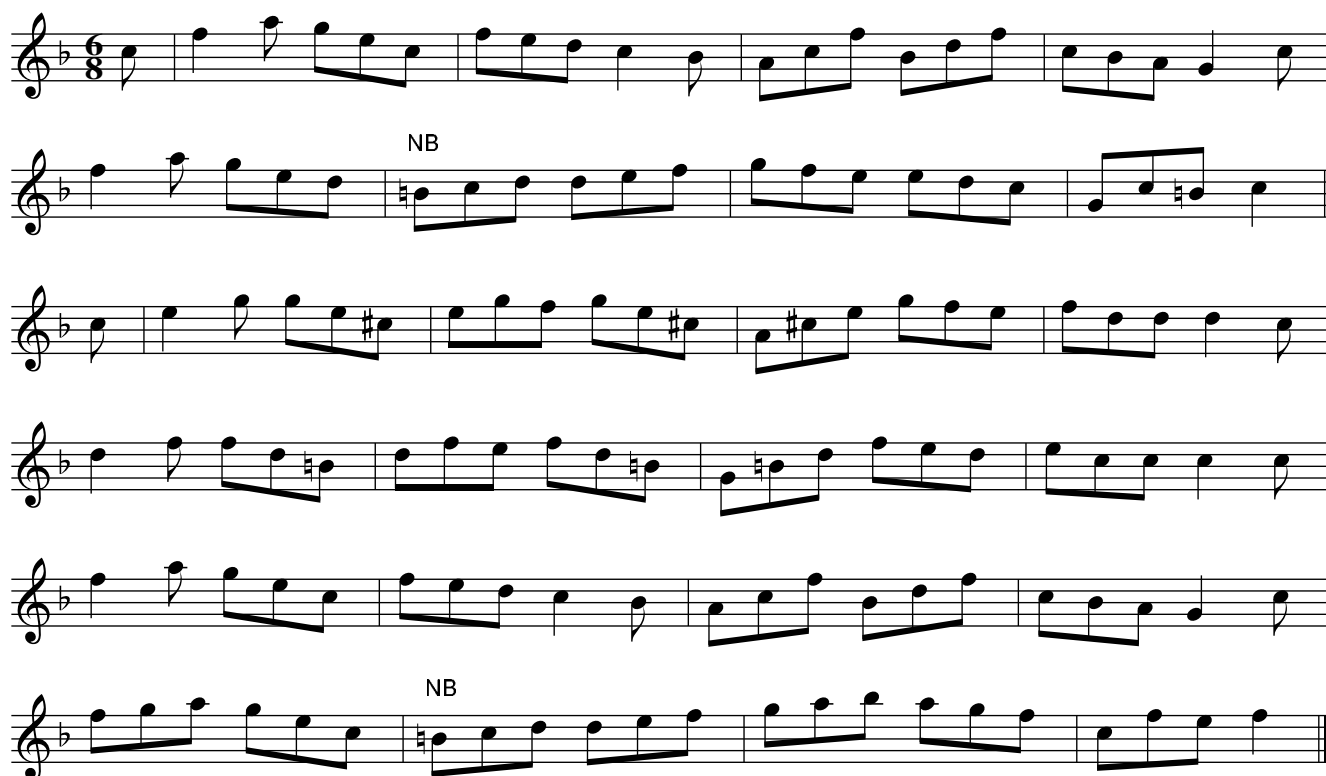
The 1st Cu. cast off and turns .l cast up again
and turn :l the 1st Man sets to the 2d
Wo. and turns her .l the 1st Wo. does the same :||
Gallop down and up again and cast off .:|
right Hand and Left

Shrewsbury Rakes. Ru1.150



The 1st Cu. sets to the 2d Wo. and turns
her .l the same to the 2d Man :l Cross over
and half figure .l right hand Left :|

Hey to Ruckolt. Ru1.151



Hands across with the 2 Cu. and Cast off .| the same with
the 3d Cu .:| Lead upto the top Foot it and cast off Lead
down with the 3d Cu. Foot it and cast up .| Hands Round six
with the 2d and 3d Cu. right hand & left with the 2d Cu.

The Last Merry Night. Ru1.152



The 1st Man turns the 2d Wo. .| the 1st Wo. turns
the 2d Man :| Gallop down and up again and cast
off :| Foot it Corners :|| Foot it to your Partner
and turn it out :||

Topsy Turvy. Ru1.153



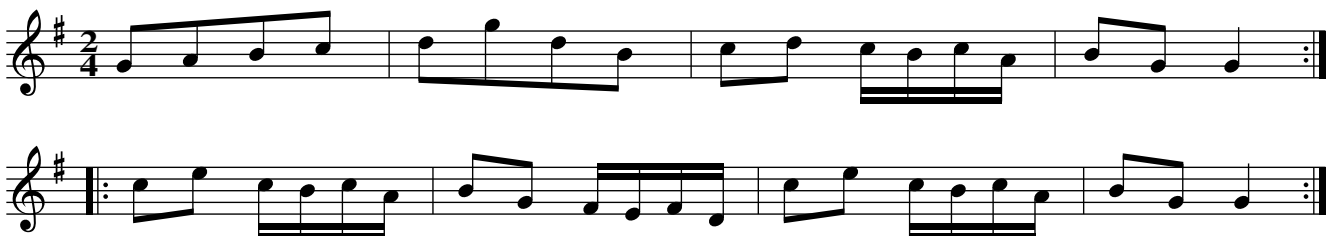
Cast of[f] two Cu. .| Cast up Again :| Cross over
two Cu. .| Lead up to the top foot it and cast off :|

Aurets Dutch Skipper. Ru1.154



Lead through the 2d Cu. cast up and turn
your Partner .| the 2d Cu. Laeds thro the 1st
Cu. cast off and turn :| the 1st Man turns
the 2d Wo. then the 1st Wo. turns the 2d
Man .| foot it all Four and right hand and Left
into the 2d Cu. Place :|

Miss Drak's Delight. Ru1.155



Cast of[f] one Cu. .| Cast up again :| Cross over
and half Figure :| Hands across half Round
with the 3d Cu. the same Back again :| Right
hand and Left :|

The Miser. Ru1.156



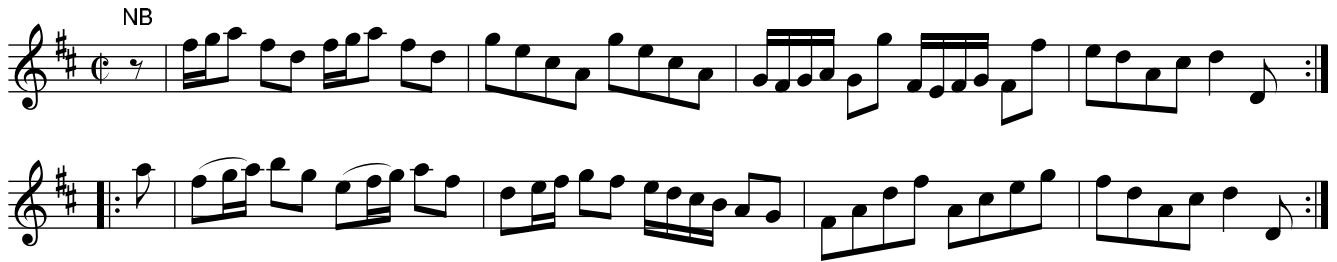
The 1st Man sets to the 2d Wo. and turns her .|
 the 1st Wo. does the same :| Cross over foot it
 and turn your Partner .| Lead thro the 3d Cu.
 cast up and turn it out :|

There's Brave Beer at Sudbury's. Ru1.157



First Man sets to the 2d Wo. turns her .|
 the 1st Wo. sets to the 2d Man turns him :|
 Cross over the 2d Cu. and foot it a little below
 then Lead out at the Top foot it and
 turn. (The last Strain once)

Just A Going. Ru1.158



The 1st Cu. sets to the 2d Wo. and hands round
all three .| the same to the 2d Man :| Lead down
one Cu. and go down without side the next Cu.
Place .| Foot it and hands Round with the 2d Cu. :|

Putney Bowling Green. Ru1.159



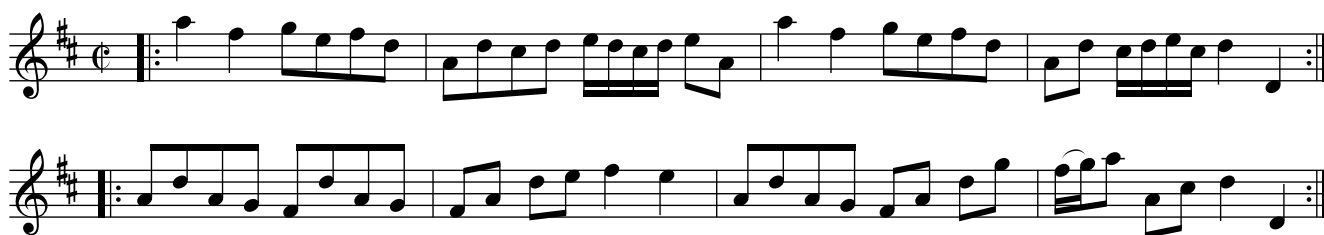
The 1st Cu. sets to the 2d Wo. and turns
his own Partner .| the 1st Wo. does the same :|
Gallop down and up again foot it and Cast off .|.
right Hand and Left :|

Butter'd Eggs. Ru1.160



The 1st Cu. sets to the 2d Wo. and turns her .|
the 1st Wo. does the same :| Hands Round with
the 2d Cu. and Cast off .|. Lead thro the 3d
Cu. and turn your Partner :|

A Trip to Farleigh. Ru1.161



The 1st Cu. Casts off and Leads thro the 3d
Cu. | the 2d Cu. does the same :| The 1st Man
sett to the 2d Wo. the 1st Wo. Does the
Same. | foot it to your Partner and Right
hand and Left :|

Amorous Goddess. Ru1.162



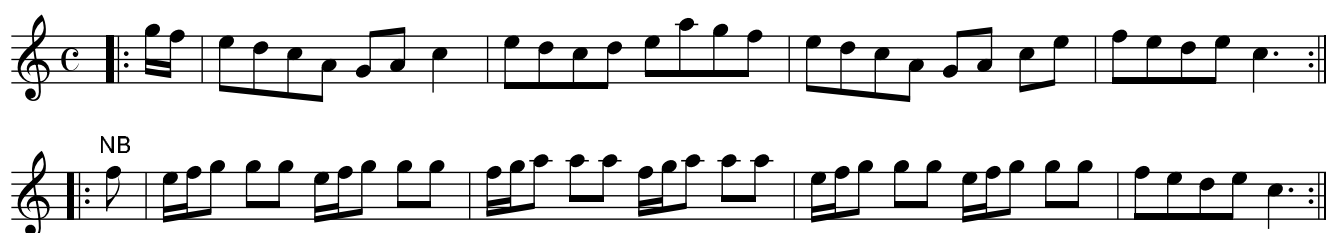
Hands a cross with the 2d Cu. and Cast off. |
the same with the 3d Cu. :| Lead up to the Top
foot it and Cast off Lead thro the 3d Cu. and
turn your Partner. |. foot it Corners and
turn foot it the other Corners and turn your
Partner :|

New Shields. Ru1.163



Cast off[f] one Cu. and Half Figure with the 3d
Cu. .l Cross up to the top and half Figure :l
Gallop down and up again foot it and Cast
off :l Hands round all six and turn your
Partner :l

Tarr Water. Ru1.164



The 1st Man casts off and the 2d Wo. casts up
at the same time and turns .l The 1st Man
and second Wo. Does the same :l The 1st Ma[n]
set to the 2d Wo. the 1st Woman does the
same .l. foot it to your Partner and right
hand and Left :l

A Trip to Ranalagh. Ru1.165



Cast of[f] and turn your Partner .l cast up again
and turn :l Cross over two Cu. Lead up to the
Top foot it and cast off .l. foot it Corners and
turn foot it the other Corners and turn your
Partner :l

Give me Love and Liberty. Ru1.166



Lead down one Cu. and slip down without
side the next Cu. and turn .l Lead up one Cu.
and slip up to the top and turn :l foot it
and hands round with the 2d Cu. .l. foot it
again and right hand and left :l

Just as I was in the Morning. Ru1.167



The 1st Cu. casts off[f] one Cu. .l cast up again :l
 cross over and turn .l. the 2d Cu. does the
 same :ll: the 1st Man Leads his Partner off and
 Leaves her in the 2d Mans Place .ll. then turns
 the 2d Wo. :l then Leads her thro the Mens
 side and turn her .l then the 1st Cu. half
 figures Round the 2d Cu. and turns :l

Beverly School Boys. Ru1.168



The 1st Cu. cast off Leads thro the 3d Cu.
 the 2d Cu. does the same .l the 1st Man set
 to the 2d Wo. and turns her the 1st Wo. does
 the same .l Gallop down and gallop up again foot it
 and cast off and right hand and left :l

Richmond Green. Ru1.169



Hay contrary sides and on yr own sides .! Cross
over two Cu.: lead up to ye top foot it & cast off :!
Foot it corners & turn foot it ye other corners and
turn yr Partner .!. Hands across half round with
ye 2nd Cu. and back again right hand and left quite
round with the 2d Couple :!

Medway. Ru1.170



The first Cu. cast off & hands round with ye 2d
Cu. The same with the 3d Cu. .!. Lead up to the
Top, foot it, and cast off lead down thro' the 3d Cu.
foot it and cast up .!. The Man whole figures with
the 3d Cu. and ye Wo. with ye 2d Cu. at the same
time, right hand and left quite round with the 2d Couple :!

Frisk it. Ru1.171



The 1st Cu. cast off, and turns .l Cast off again & turn :l Lead up
to ye top foot it and cast off .l. Right hand & left quite round
with ye 3d Cu. :ll: Hands & cross quite round with ye 2d and 3d We. .ll.
The same with the Men :ll Hay contrary sides .ll. foot it
to your Partner and turn it out :

Sack Possett. Ru1.172



The first Cu. cast off below ye 2d
Cu. .l Then cast off below ye 3d Cu. :l
Lead up to ye top foot it & cast off .l.
Hands round six with the 2d and 3d Couple :

The Brays of Angus. Ru1.173



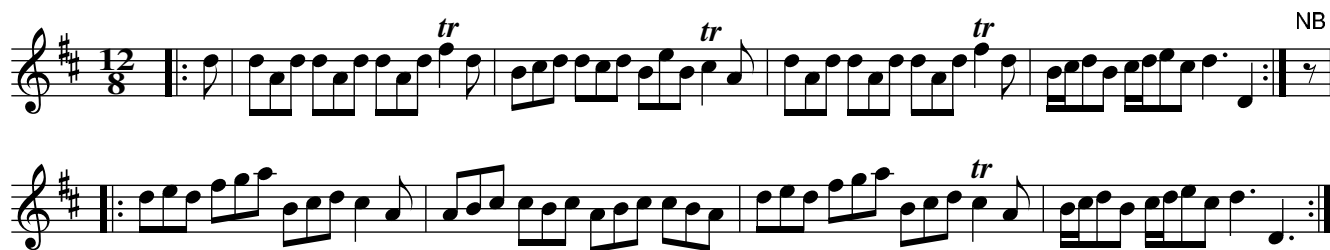
The first Man sets to the 2d Wo. and turns her .! The first Wo. does the same :! Cross over two Cu. Lead up to the Top foot it and cast off .!. foot it to your Partner and turn her right hand and left quite round with the 2d Cu. :!

None so pretty. Ru1.174



The first Man turns the 2d Wo.
The first Wo. does the same :! Cross over two Cu. .!. Lead up to the Top foot it and cast off :!

Unfortunate Joak. Ru1.175



The first Man set to ye 2d Wo. and hands all three .| The same to the 2d Man :| Cross over & half Figure .|. The Man sets to ye 3d Wo & turns her the Wo. does the same to ye 3d Man at the same time :|| The Man crosses round ye 3d Cu. and the Wo. round the 2d Cu. at ye same time .|| Right hand & left quite round with ye 2d Cu. .|| The Man sets to ye 2d Wo. & turns her, the Wo. does ye same to ye 2d Man at ye same time .|| The Man falls between ye 3d Cu. and the Wo. between ye 2d Cu. at ye same time foot it & turn it out :|

The Kentish Cricketers. Ru1.176



Hands across quite round with the 2d Cu. .| The same back again :| Cross over and half Figure Right Hand and left quite round with the 2d Cu. :|

The Na'er a Bottom. Ru1.177



The first Cu. casts off two Cu. .l Lead up
to the top foot it and cast off :l Hands
round all six with the 2d and 3d Cu. .l.
Right hand and left quite round with the 2d Couple :l

Scarborough Whim. Ru1.178



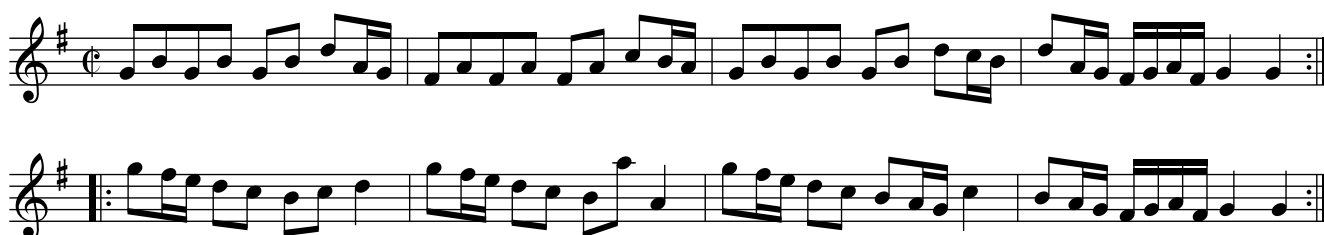
The first Cu. casts off and hands round with
the 2d Cu. .l the same with ye 3d Cu. :l
Lead up to the Top foot it and cast off .l.
Right hand and left quite round with the 2d
Couple :l

Merry Taylors. Ru1.179



The first Cu. casts off and Hands round with the 2d Cu. .l
 The same with the 3d Cu. :l Cross over up to the Top .l.
 Gallop down two Cu. and up again foot it cast off :l

The Rakes of London. Ru1.180
 Rakes of Mallow, aka



The first Man hays on the Wo. side
 his Partner hays on the men's side at the
 same time .l The first Cu. hay on their
 own sides :l The two 1st Cu. foot and
 hands across half roun[d] .l the two 1st Cu.
 foot and right and left.

The Tea Room. Ru1.181



The first Man sets to the 2d Woman and turns
her .| the first Woman does the same :| Gallop down
and up again foot it and cast off right hand and
Left quite round with the second Couple :|

Bob in the Bed. Ru1.182

Bob in Bed with Bess, aka. Ru1.182

Garson's Quadrille, aka. Ru1.182



The first Couple Casts of[f] and Hands round with ye
third Couple .| Cast up again and Hands round with
the second Couple :| Lead through the second Couple
cast up and cast of[f] again and turn your Partner .|.
Lead through the third Couple and cast up into the
second Couples Place and turn :|

A Trip Up Stairs. Ru1.183



The first Man sets to the second Woman and turns
her .| the first Woman does the same :| Cross over
quite round the second Couple .|. Gallop Down two
Couples up again foot it and cast off :|

Lasses of Berwick. Ru1.184



Hay contrary sides .| Hay on your own sides :|
Cross over two Couple .|. Lead up to the top foot
it and cast off :|

The Lassie in the Yellow Coatie. Ru1.185



The first Couple casts of[f] two Couple .l
 cast up again :l Cross over & half Figure
 .l right hand and Left quite round with
 the second Couple :ll: foot it Corners and
 turn .ll foot it the other Corners and turn
 :ll Lead through the Mens side and turn
 your Partner .ll. Lead through the Womens
 side and turn it out :l

Scotland Yard. Ru1.186



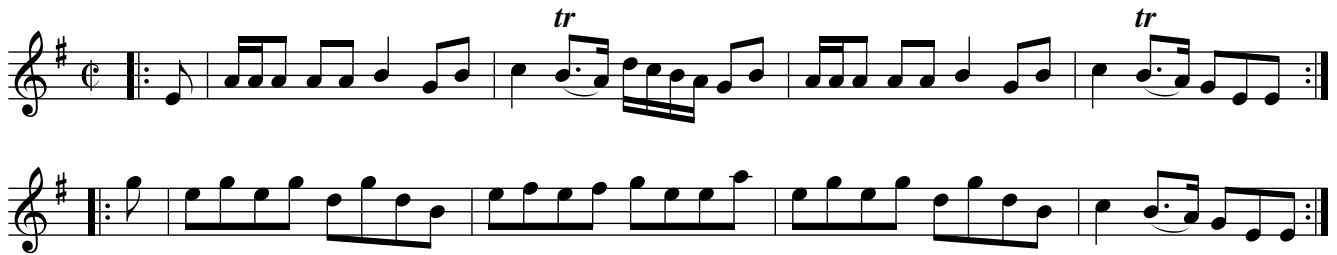
The first Man sets to the second Woman and turns her .l
 The first Woman does the same :l Cross over two Couple
 Lead upto the Top foot it and cast of[f] .l Hands a Cross
 half round with the second Couple and Back again right
 Hand and Left quite round with the second Couple :l

Caw hawkey through the water. Ru1.187



Foot it to your Partner and hands cross Quite
 round with the second Couple .l The same Back
 again .l foot it to your Partner and turn her .l
 foot it again and right hand and Left into the
 second Couples Place :l

Dill stick the Minister. Ru1.188



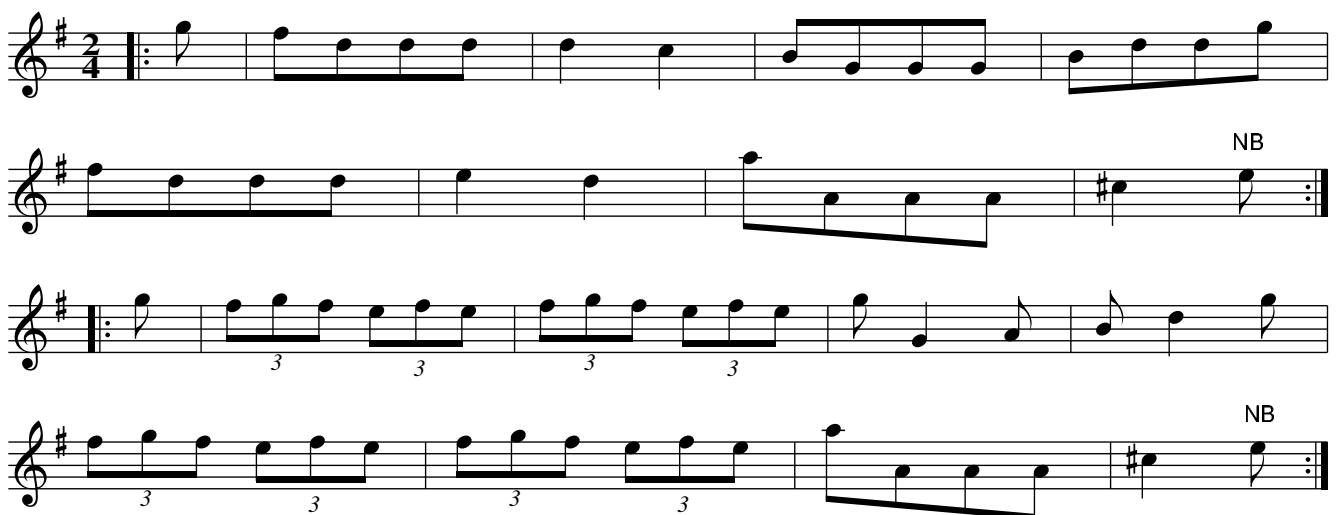
The first Couple foots it and Casts of[f] foot it again
and Lead through the third Couple :| Foot it Corners
and turn .l. foot it the other Corners and
turn your own Partners :|

Masons Rant. Ru1.189



The first Couple foots it casts of[f] and turn .l| The
second does the same :| Back to Back Cross over
and turn .l. Right Hand and Left quite round with
the second Couple :|

Bread and Cheese. Ru1.190



The first Couple Leads down two Couple and the
second Couple follows them and both Couple casts
up into their own Places .l| the first and second
Couple goes Hands four quite round :| Cross over
and half figure .l. right hands and Left quite round
with the second Couple :|

Repley's Delight, or... Ru1.191
The Drunken Parson. Ru1.191



The first Couple casts of[f] and turns .l
Cast up again and turn :l Gallop Down
and up again foot it and cast of[f] .l.
right hand and Left quite round
with the second Couple :l

The Lasses of Dunce. Ru1.192



The first Man Cast of[f] and the second Woman Casts up at the
same time, and turns .l The second Man and first Woman does
the same :l Lead Down two Couple foot it and half Figure
with the third Couple .l. Lead up to the top foot it and half
Figure with the second Couple :l

Miss Macdonal's Rant. Ru1.193



Cast off two Couple .l Cast up again :l Cross over
Two Couple .l. Lead up to the Top foot it & Cast off
:ll: Hands across with the Bottom Couple .ll And
Back again :ll Hands Round four at Top :ll.
Right Hand and Left :l

Gordon Castle. Ru1.194



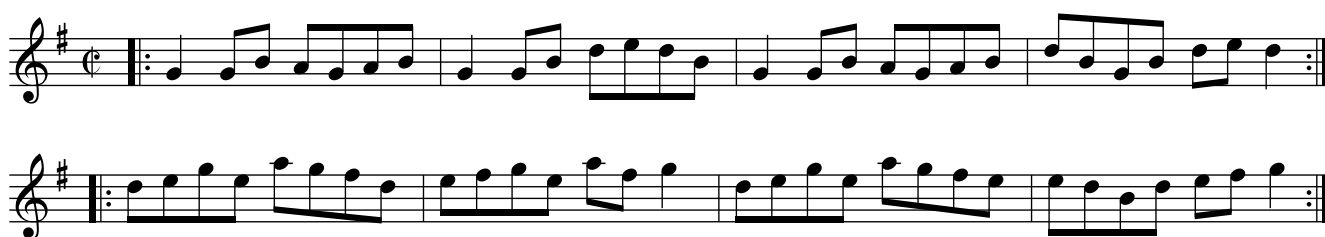
Cast off & Hands Round with the 3d Couple .l Cast
up again & Hands round with the 2d Couple :l Gallop
down & up again & Cast off .l. Right Hand & Left :l

Much to do about nothing. Ru1.195



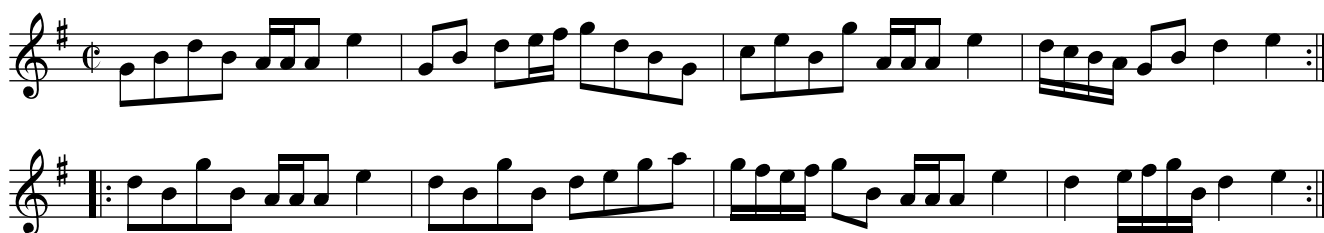
The first & second Couple foot it all four & Right Hand & Left half Round .| The same Back again :| Foot it all four & Hands across .|. Foot it & the same Back again :|| Gallop Down the Middle & up again & Cast off :|| Right Hand and Left with the top Couple :|

The Ale Wife & her Barrel. Ru1.196



Cast off & turn your Partner .| Cast up again & turn :| Foot it & Hands across .|. The same Back again :|| First Man set to the second Wo. & turn her .|| First woman does the same :|| Cross over figure In & Right Hand & Left :|

Burlum's Reel. Ru1.197



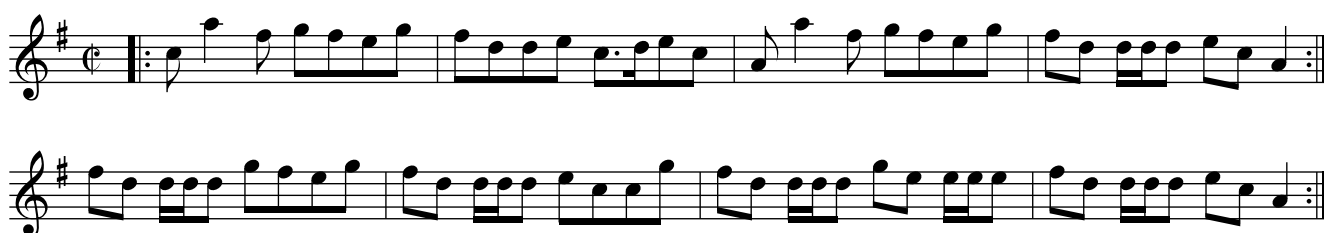
Foot it all Four & Hands across .! The same Back
Again :! Cross over two Couple .!. Lead up to the
Top foot it & Cast :! Foot it Corners & turn .!|
Foot it the other Corners & turn :! Lead out
Each sides and turn.

The North Reel. Ru1.198



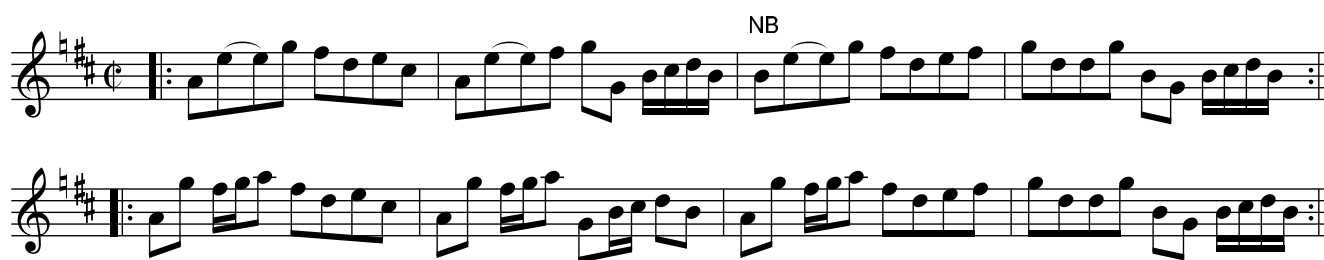
The first Man foots it to his Partner & turns
her & Leaves her in his Place .! foot it
Sides & turn :! Cast down two Couple .!.
Lead up to the Top foot it & Cast off :!

The Firr Tree. Ru1.199



The first Man Cast off & turn the third Woman
& stand in the 2d Man's Place .! The first Woman
Does the same :! Hands round four at Bottom .!.
Right Hand & Left at Top :!

The Lads of Boot. Ru1.200
Hold the Lass Till I Win at Her, aka. Ru1.200



Gallop down & up again & Cast off .l the same
With the second Couple :l Lead up to the top
foot it & cast off .l. Right Hand & Left :l