

Robinson Crusoe. Roose.0072

Musical score for "Robinson Crusoe. Roose.0072". The score consists of six staves of music in treble clef, key signature of two sharps (F# and C#), and 6/8 time signature. The first staff begins with a treble clef, a key signature of two sharps, and a 6/8 time signature. The second staff contains a first ending bracket labeled '1' and a second ending bracket labeled '2'. The third staff features two accents (v) over the eighth notes in the fourth and eighth measures. The fourth, fifth, and sixth staves continue the melodic line with various rhythmic patterns and rests.

Tom Thumb. Roose.0073

Musical score for "Tom Thumb. Roose.0073". The score consists of three staves of music in treble clef, key signature of two sharps (F# and C#), and common time (C). The first staff begins with a treble clef, a key signature of two sharps, and a common time signature. The second and third staves continue the melodic line with various rhythmic patterns and rests.

Back of Change. House Roose.0074

Musical notation for 'Back of Change. House Roose.0074'. The piece is in treble clef with a key signature of one sharp (F#) and a common time signature (C). It consists of two staves. The first staff contains a melodic line with eighth and sixteenth notes. The second staff contains a similar melodic line, ending with a triplet of eighth notes marked with a '3' below the notes.

La Belle Jeanette. Roose.0075

Musical notation for 'La Belle Jeanette. Roose.0075'. The piece is in treble clef with a key signature of one sharp (F#) and a 2/4 time signature. It consists of two staves. The first staff contains a melodic line with eighth and sixteenth notes. The second staff contains a similar melodic line, featuring many beamed eighth and sixteenth notes.

Plymouth. Roose.0076
The Cream Pot, aka. Roose.0076
The Kirn Staff, aka. Roose.0076

Musical score for Plymouth. Roose.0076, consisting of six staves of music in treble clef with a key signature of one sharp (F#) and a 6/8 time signature. The score includes various rhythmic values such as eighth and sixteenth notes, rests, and dynamic markings like accents (v) and slurs. The piece concludes with a double bar line and repeat dots.

Inkle and Yarico. Roose.0077

Musical score for Inkle and Yarico. Roose.0077, consisting of four staves of music in treble clef with a key signature of one sharp (F#) and a 6/8 time signature. The score features a consistent eighth-note rhythmic pattern throughout, with dynamic markings like accents (v) and slurs. The piece concludes with a double bar line and repeat dots.

Swiss Allemande. Roose.0078



Musical score for Swiss Allemande, Roose.0078. The score is written in treble clef, key of D major (one sharp), and 2/4 time signature. It consists of four staves of music. The first staff begins with a treble clef, a key signature of one sharp (F#), and a 2/4 time signature. The melody starts with a dotted quarter note followed by an eighth note, then a quarter note, and continues with a series of eighth and quarter notes. The second staff continues the melody, ending with a double bar line and repeat dots. The third staff begins with a repeat sign and continues with a series of eighth and quarter notes. The fourth staff continues the melody, ending with a double bar line and repeat dots.

Castle Down. Roose.0079



Musical score for Castle Down, Roose.0079. The score is written in treble clef, key of D major (one sharp), and 6/8 time signature. It consists of four staves of music. The first staff begins with a treble clef, a key signature of one sharp (F#), and a 6/8 time signature. The melody starts with a quarter note followed by an eighth note, then a quarter note, and continues with a series of eighth and quarter notes. The second staff continues the melody, ending with a double bar line and repeat dots. The third staff begins with a repeat sign and continues with a series of eighth and quarter notes. The fourth staff continues the melody, ending with a double bar line and repeat dots.

Yorkshire Lasses. Roose.0080

Musical score for 'Yorkshire Lasses. Roose.0080'. The score consists of four staves of music in treble clef, 6/8 time signature, and one sharp (F#) key signature. The first two staves are the main melody, and the last two staves are a second part. The first staff begins with a repeat sign. The second staff ends with a double bar line and repeat dots. The third and fourth staves also begin with repeat signs and end with double bar lines and repeat dots.

Nineteenth of May. Roose.0081

Musical score for 'Nineteenth of May. Roose.0081'. The score consists of four staves of music in treble clef, 6/8 time signature, and one sharp (F#) key signature. The first two staves are the main melody, and the last two staves are a second part. The first staff begins with a repeat sign. The second staff ends with a double bar line and repeat dots. The third and fourth staves also begin with repeat signs and end with double bar lines and repeat dots.

The Merry Sailor. Roose.0082

Musical score for 'The Merry Sailor' (Roose.0082). The score is written in treble clef with a key signature of one sharp (F#) and a 3/8 time signature. It consists of four staves of music. The first staff begins with a treble clef, a sharp sign, and a 3/8 time signature. The melody is composed of eighth and quarter notes. The second staff continues the melody and ends with a double bar line and repeat dots. The third and fourth staves feature a more rhythmic melody with eighth notes and quarter notes, also ending with a double bar line and repeat dots.

Miss Harriet. Roose.0083

Musical score for 'Miss Harriet' (Roose.0083). The score is written in treble clef with a key signature of one sharp (F#) and a 2/4 time signature. It consists of four staves of music. The first staff begins with a treble clef, a sharp sign, and a 2/4 time signature. The melody is composed of quarter and eighth notes. The second staff continues the melody and ends with a double bar line and repeat dots. The third and fourth staves feature a more rhythmic melody with quarter notes and eighth notes, also ending with a double bar line and repeat dots.

The Four Seasons. Roose.0084

Musical score for 'The Four Seasons' (Roose.0084). The score consists of six staves of music in treble clef, key of D major (two sharps), and 6/8 time signature. The first staff begins with a treble clef, a key signature of two sharps, and a 6/8 time signature. The music features a mix of eighth and sixteenth notes, with some slurs and accents. The second staff ends with a double bar line and repeat dots. The third staff begins with a repeat sign. The fourth staff ends with a double bar line and repeat dots. The fifth and sixth staves continue the melodic line with various rhythmic patterns.

Paddy Whack. Roose.0085

Musical score for 'Paddy Whack' (Roose.0085). The score consists of four staves of music in treble clef, key of D major (two sharps), and 6/8 time signature. The first staff begins with a treble clef, a key signature of two sharps, and a 6/8 time signature. The music features a mix of eighth and sixteenth notes, with some slurs and accents. The second staff ends with a double bar line and repeat dots. The third staff begins with a repeat sign and includes a trill (tr) marking above a note. The fourth staff ends with a double bar line and repeat dots.

Sham Fight. Roose.0086

Musical notation for 'Sham Fight. Roose.0086'. It consists of four staves of music in treble clef, key of D major (one sharp), and 6/8 time signature. The first staff begins with a treble clef, a key signature of one sharp, and a 6/8 time signature. The melody is written in a single line. The second staff continues the melody. The third and fourth staves each begin with a repeat sign (double bar line with two dots) and continue the melody. The piece ends with a double bar line and repeat dots.

Quick and Merry. Roose.0087

Musical notation for 'Quick and Merry. Roose.0087'. It consists of four staves of music in treble clef, key of D major (one sharp), and 6/8 time signature. The first staff begins with a treble clef, a key signature of one sharp, and a 6/8 time signature. The melody is written in a single line. The second staff continues the melody. The third and fourth staves each begin with a repeat sign (double bar line with two dots) and continue the melody. The piece ends with a double bar line and repeat dots.

Lady Habinlon[?] Fancy. Roose.0088

Musical notation for 'Lady Habinlon[?] Fancy. Roose.0088'. It consists of two staves of music in treble clef, key of D major (one sharp), and 2/4 time signature. The first staff begins with a treble clef, a key signature of one sharp, and a 2/4 time signature. The melody is written in a single line. The second staff begins with a repeat sign (double bar line with two dots) and continues the melody. The piece ends with a double bar line and repeat dots.

Valentine Day. Roose.0089

Two staves of musical notation for 'Valentine Day. Roose.0089'. The first staff is a treble clef melody in 2/4 time, starting with a key signature of one sharp (F#). The second staff is a treble clef accompaniment in 2/4 time, starting with a key signature of one sharp (F#). Both staves end with a double bar line and repeat dots.

The Butcher's Delight. Roose.0090

Iron Legs, aka. Roose.0090

Four staves of musical notation for 'The Butcher's Delight. Roose.0090'. The first two staves are treble clef melody lines in 2/4 time with a key signature of one sharp (F#). The second staff has the word 'sic' written below the first measure. The third and fourth staves are treble clef accompaniment lines in 2/4 time with a key signature of one sharp (F#). All staves end with a double bar line and repeat dots.

The Indian Queen. Roose.0091

Musical score for 'The Indian Queen' (Roose.0091). The score consists of four staves of music in G major (one sharp) and common time. The first staff begins with a treble clef and a common time signature. The second and third staves have a repeat sign at the beginning. The fourth staff ends with a double bar line and repeat dots. The notation includes various rhythmic values such as eighth and sixteenth notes, and rests. The word 'NB' appears above the second and third staves.

Miss Wards Delight. Roose.0092

Musical score for 'Miss Wards Delight' (Roose.0092). The score consists of four staves of music in C major (no sharps or flats) and common time. The first staff begins with a treble clef and a common time signature. The notation includes various rhythmic values such as eighth and sixteenth notes, and rests. The score ends with a double bar line and repeat dots.

The Whim. Roose.0093

Musical score for 'The Whim' (Roose.0093). The score consists of two staves of music in G major (one sharp) and 2/4 time. The first staff begins with a treble clef and a 2/4 time signature. The notation includes various rhythmic values such as eighth and sixteenth notes, and rests. The second staff begins with a treble clef and a key signature change to E minor (two flats). The score ends with a double bar line and repeat dots.

Blanchard's Delight. Roose.0094

Two staves of musical notation for the piece 'Blanchard's Delight'. The first staff begins with a treble clef, a key signature of one sharp (F#), and a 2/4 time signature. The melody consists of eighth and sixteenth notes. The second staff continues the melody with similar rhythmic patterns and includes a repeat sign at the beginning.

The Happy Soldier. Roose.0095

Two staves of musical notation for the piece 'The Happy Soldier'. The first staff begins with a treble clef, a key signature of one sharp (F#), and a 3/8 time signature. The melody is composed of eighth and sixteenth notes. The second staff continues the melody and includes a repeat sign at the beginning.

Barnsley New Theatre. Roose.0096

Four staves of musical notation for the piece 'Barnsley New Theatre'. The first staff begins with a treble clef, a key signature of one sharp (F#), and a 6/8 time signature. The melody is primarily composed of eighth notes. The second staff continues the melody and includes a repeat sign at the beginning. The third and fourth staves continue the piece, with the fourth staff ending with a repeat sign.

The Hurry. Roose.0097

Musical score for 'The Hurry. Roose.0097'. The score consists of four staves of music in treble clef, key signature of one sharp (F#), and 3/8 time signature. The first staff begins with a dotted quarter note followed by eighth notes. The second staff continues with eighth notes and ends with a double bar line and repeat dots. The third staff starts with a repeat sign and continues with eighth notes. The fourth staff continues with eighth notes and ends with a double bar line and repeat dots.

The Flight. Roose.0098

Musical score for 'The Flight. Roose.0098'. The score consists of four staves of music in treble clef, key signature of one sharp (F#), and 3/8 time signature. The first staff begins with a quarter note followed by eighth notes. The second staff continues with eighth notes and ends with a double bar line and repeat dots. The third staff starts with a repeat sign and continues with eighth notes. The fourth staff continues with eighth notes and ends with a double bar line and repeat dots.

The Election. Roose.0099

Musical score for 'The Election. Roose.0099'. It consists of four staves of music in treble clef, key signature of two sharps (F# and C#), and 6/8 time signature. The first two staves are the first system, and the last two are the second system. The first staff begins with a repeat sign. The piece concludes with a double bar line and repeat dots.

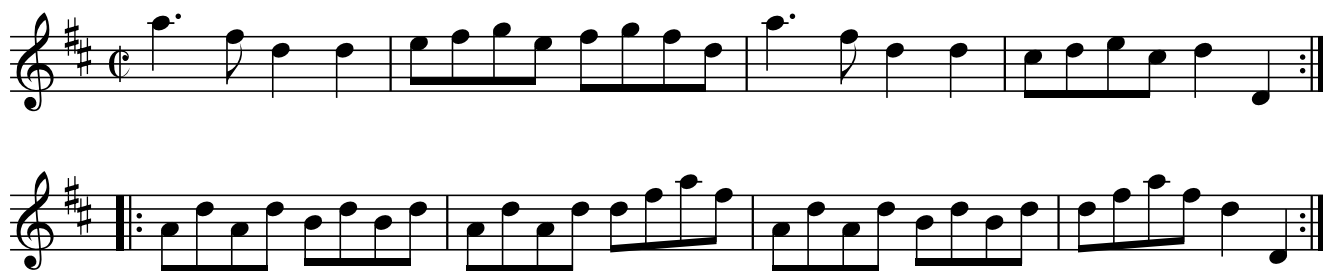
Delvin House. Roose.0100

Musical score for 'Delvin House. Roose.0100'. It consists of four staves of music in treble clef, key signature of three sharps (F#, C#, and G#), and 6/8 time signature. The first two staves are the first system, and the last two are the second system. The first staff begins with a repeat sign. The piece concludes with a double bar line and repeat dots.

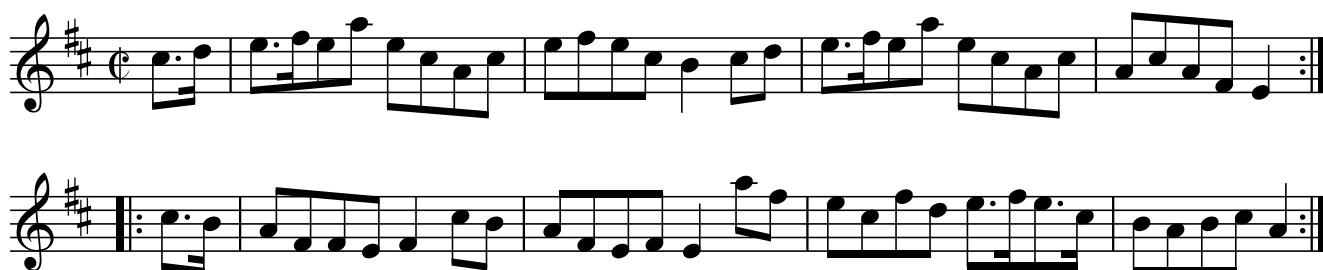
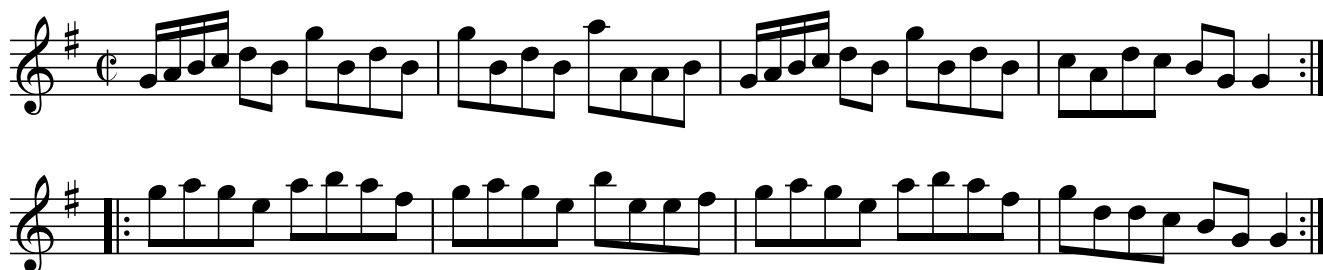
Anna. Roose.0101

Musical score for 'Anna. Roose.0101'. It consists of two staves of music in treble clef, key signature of two sharps (F# and C#), and common time (C) signature. The first staff begins with a repeat sign. The piece concludes with a double bar line and repeat dots.

Dutchess of York Fancy. Roose.0102



The New Scotch Dance. Roose.0103

Drypool Lasses. Roose.0104
Duke of Perth, aka. Roose.0104

Miss Mary Stewart's Strathspey. Roose.0105



Miss Stewart of Ballechen's Favourite. Roose.0106

Musical score for 'Miss Stewart of Ballechen's Favourite' (Roose.0106). The score is written in treble clef with a key signature of one sharp (F#) and a 3/8 time signature. It consists of six staves of music. The first two staves are the main melody, and the following four staves are accompaniment. The melody features a mix of eighth and sixteenth notes, with some rests and a final double bar line. The accompaniment consists of rhythmic patterns, including eighth and sixteenth notes, and rests.

Miss Clementina Stewart's Strathspey. Roose.0107

Musical score for 'Miss Clementina Stewart's Strathspey' (Roose.0107). The score is written in treble clef with a key signature of one sharp (F#) and a common time signature (C). It consists of three staves of music. The first staff begins with the instruction 'NB' above the first note. The melody is characterized by a series of eighth and sixteenth notes, with some rests and a final double bar line. The second and third staves are accompaniment, featuring rhythmic patterns of eighth and sixteenth notes.

Miss Madalina Maxwell's Strathspey. Roose.0108

The image displays a musical score for a piece titled "Miss Madalina Maxwell's Strathspey. Roose.0108". The score is written on three staves, all in G major (one sharp) and common time (C). The first staff begins with a treble clef and a common time signature. The second staff starts with a repeat sign. The third staff continues the melody. The music consists of eighth and sixteenth notes, with some beamed sixteenth notes and dotted rhythms. The piece concludes with a double bar line and repeat dots.