

Untitled. Roose.0611

Musical score for 'Untitled. Roose.0611' in 6/8 time, featuring four staves of music. The key signature has one flat (Bb). The first staff begins with a repeat sign. The melody is primarily eighth and sixteenth notes, with some quarter notes. The second and fourth staves end with repeat signs and double bar lines.

La La Damoiselle. Roose.0612

La Damoiselle. Roose.0612

Musical score for 'La La Damoiselle. Roose.0612' in 6/8 time, featuring six staves of music. The key signature has one sharp (F#). The first staff begins with a repeat sign. The melody is primarily eighth and sixteenth notes, with some quarter notes. The second, fourth, fifth, and sixth staves end with repeat signs and double bar lines.

Untitled. Roose.0613

Musical score for 'Untitled. Roose.0613' in G major (one sharp) and 2/4 time. The score consists of four staves. The first staff is a treble clef melody with a repeat sign at the beginning. The second staff is a treble clef melody with a bass clef accompaniment consisting of two chords (G and D) marked with a 'p' (piano) dynamic. The third staff is a treble clef melody with a bass clef accompaniment consisting of eighth-note chords. The fourth staff is a treble clef melody with a bass clef accompaniment consisting of eighth-note chords. The piece concludes with a double bar line and repeat dots.

A Cotillon. Roose.0614

Musical score for 'A Cotillon. Roose.0614' in G major (one sharp) and 2/4 time. The score consists of three staves. The first staff is a treble clef melody with a bass clef accompaniment consisting of eighth-note chords. The second staff is a treble clef melody with a bass clef accompaniment consisting of eighth-note chords. The third staff is a treble clef melody with a bass clef accompaniment consisting of eighth-note chords. The piece concludes with a double bar line and repeat dots.

Brussels' Gazette. Roose. 0615

'Cotillon'

Musical score for 'Brussels' Gazette. Roose. 0615'. The score consists of six staves of music in treble clef, 6/8 time, and D major. The first five staves are identical. The sixth staff is marked 'NB' and contains a variation of the melody. The piece begins with a repeat sign and ends with a double bar line and repeat dots.

The Feathers. Roose.0616

'Cotillon'

Musical score for 'The Feathers. Roose.0616'. The score consists of six staves of music in treble clef, 6/8 time. The first five staves are in D major, and the sixth staff is in B minor. The piece begins with a repeat sign and ends with a double bar line and repeat dots.

La Valentine. Roose.0617
La Valentine. Roose.0617

'Cotillon'

Musical score for 'La Valentine. Roose.0617' in G major and 2/4 time. The score consists of four staves. The first staff begins with a repeat sign and contains a melody of eighth and sixteenth notes. The second staff continues the melody. The third staff features a more rhythmic accompaniment with eighth and sixteenth notes. The fourth staff continues the melody, including a trill (tr) on the final note.

La Assembly. Roose.0618
La Assembly. Roose.0618

'Cotillon'

Musical score for 'La Assembly. Roose.0618' in G major and 2/4 time. The score consists of five staves. The first staff begins with a repeat sign and contains a melody with some rests. The second staff continues the melody. The third staff features a more rhythmic accompaniment with eighth and sixteenth notes. The fourth staff continues the melody with eighth notes. The fifth staff continues the melody with eighth and sixteenth notes.

Le Capuchine de Maidon. Roose.0619
Le Capuchine de Maidon. Roose.0619

'Cotillon'

Musical score for 'Le Capuchine de Maidon' in G major, 2/4 time. The score consists of five staves of music. The first staff begins with a repeat sign and a key signature change to G major. The melody is characterized by eighth-note patterns and quarter notes. The piece concludes with a double bar line and repeat dots.

New Holland. Roose.0620
Chain Cotillion, aka. Roose.0620

'Cotillon'

Musical score for 'New Holland' in G major, 2/4 time. The score consists of five staves of music. The first staff begins with a repeat sign and a key signature change to G major. The melody features a mix of quarter and eighth notes. The piece concludes with a double bar line and repeat dots.

The Pantheon. Roose.0621

'Cotillon'

Musical score for 'The Pantheon. Roose.0621' in G major and 6/8 time. The score consists of eight staves of music. The first staff begins with a repeat sign and a double bar line. The melody is simple and rhythmic, typical of a cotillon. The eighth staff ends with a double bar line and repeat dots.

A Trip to Sutton. Roose.0622

'Cotillon'

Musical score for 'A Trip to Sutton. Roose.0622' in G major and 2/4 time. The score consists of two staves of music. The first staff begins with a repeat sign and a double bar line. The melody is more rhythmic and includes some eighth-note patterns. The second staff ends with a double bar line and repeat dots.

Marionets. Roose.0623

'Cotillon'

Musical score for 'Marionets. Roose.0623' in G major and 6/8 time. It consists of four staves of music. The first staff begins with a repeat sign. The melody is characterized by eighth and sixteenth notes, with a dotted quarter note in the second measure of the first staff. The piece concludes with a double bar line and repeat dots.

The King of Denmark's Favourite. Roose.0624

The Promenade, aka. Roose.0624

'Cotillon'

Musical score for 'The King of Denmark's Favourite. Roose.0624' in G major and 6/8 time. It consists of six staves of music. The first staff begins with a repeat sign. The melody features a mix of eighth, sixteenth, and dotted quarter notes. The piece concludes with a double bar line and repeat dots.

La Marvellous. Roose.0625
La Marvellous. Roose.0625

'Corillon'

Musical score for 'La Marvellous. Roose.0625'. It consists of four staves of music in treble clef with a key signature of one sharp (F#) and a 3/8 time signature. The first staff begins with a repeat sign and contains a melody with eighth and sixteenth notes. The second staff continues the melody and ends with a double bar line and the word 'FINE'. The third and fourth staves provide a rhythmic accompaniment with eighth-note patterns and rests. The fourth staff ends with a double bar line and the initials 'D.C.' (Da Capo).

Limsden's Strathspey. Roose.0626

Musical score for 'Limsden's Strathspey. Roose.0626'. It consists of three staves of music in treble clef with a key signature of one flat (Bb) and a common time (C) signature. The first staff contains a melody with eighth and sixteenth notes. The second and third staves provide a rhythmic accompaniment with eighth-note patterns and rests.

Grige; a Strathspey. Roose.0627

Musical score for 'Grige; a Strathspey. Roose.0627'. It consists of four staves of music in treble clef with a key signature of one flat (Bb) and a 2/4 time signature. The first staff contains a melody with eighth and sixteenth notes. The second and third staves provide a rhythmic accompaniment with eighth-note patterns and rests. The fourth staff continues the accompaniment and ends with a double bar line.

Quick Step. Roose.0628

The image displays a musical score for a piece titled "Quick Step. Roose.0628". The score is written in 6/8 time and consists of four staves. The first staff begins with a treble clef, a 6/8 time signature, and a repeat sign. The melody is composed of eighth and sixteenth notes, with some beamed eighth notes. The second staff continues the melody with similar rhythmic patterns. The third staff features a more complex rhythmic structure with dotted notes and beamed eighth notes. The fourth staff concludes the piece with a final cadence, including a repeat sign and a double bar line.

Cuckoo Solo. Roose.0629

Musical score for Cuckoo Solo. Roose.0629, featuring a single melodic line in treble clef with a key signature of two sharps and a common time signature. The score is divided into measures, with measure numbers 5, 9, 13, 16, 17, 18, 21, 25, 29, 34, and 38 indicated. The piece begins with a melodic phrase, followed by a series of sixteenth-note patterns, a repeat sign at measure 16, and concludes with a final melodic phrase.

42

Minuet 46

50

54

58

62

66

70

74

78

82

86

90

3

Detailed description: This image shows a page of musical notation for a piece titled "Minuet 46". The score is written in treble clef with a key signature of two sharps (F# and C#) and a 3/4 time signature. The music consists of a single melodic line. The page contains 11 staves of music, with measure numbers 42, 50, 54, 58, 62, 66, 70, 74, 78, 82, 86, and 90 marked at the beginning of their respective staves. The notation includes various rhythmic values such as eighth and sixteenth notes, rests, and trills (tr). There are repeat signs at the beginning of the first staff and at the end of the final staff. A page number "3" is centered at the bottom of the page.

Duncan Grey. Roose.0630

Musical score for Duncan Grey. Roose.0630, featuring two staves in 2/4 time with a key signature of one sharp (F#). The first staff contains a melody with dynamics *p* and *f* alternating. The second staff contains a rhythmic accompaniment. The piece concludes with the instruction "NB FINE" above the first staff and "NB D.C." above the second staff.

The Wind Blows the Barley O. Roose.0631

Musical score for The Wind Blows the Barley O. Roose.0631, featuring three staves in common time with a key signature of one sharp (F#). The first staff contains a melody with repeat signs. The second and third staves contain accompaniment. The piece concludes with repeat signs on the first staff.

Don't You Know the Muffin Man. Roose.0632

La Belle Catherine, aka. Roose.0632
 Come Dance and Sing, aka. Roose.0632
 Inkle and Yarico, aka. Roose.0632

Musical score for Don't You Know the Muffin Man. Roose.0632, featuring two staves in 2/4 time with a key signature of one sharp (F#). The first staff contains a melody with a final note marked "FINE". The second staff contains accompaniment with a fermata over the final note, marked "D.C.".

The D---l Among The Fiddlers. Roose.0633

The Devil Among The Fiddlers. Roose.0633 aka

Musical score for 'The Devil Among The Fiddlers' in treble clef, key of D major (one sharp), and common time (C). The score consists of three staves. The first staff begins with a repeat sign and contains a melody of eighth and sixteenth notes. The second and third staves provide accompaniment with similar rhythmic patterns, including some triplets and sixteenth-note runs.

Green Sleeves. A Jig. Roose. 0634

Musical score for 'Green Sleeves. A Jig' in treble clef, key of D minor (two flats), and 8/8 time. The score consists of six staves. The first staff begins with a repeat sign and contains a melody. A note below the first staff reads 'two flats in ms key sig'. The second and fourth staves end with a double bar line and repeat sign. The remaining staves continue the melody and accompaniment with various rhythmic figures.

Duke of Gordon's Strathspey. Roose. 0635

Musical score for 'Duke of Gordon's Strathspey' in 2/4 time, key of B-flat major. The score consists of three staves of music. The first staff begins with a repeat sign and a double bar line. The melody is characterized by eighth and sixteenth notes, with some triplet-like patterns. The second and third staves provide accompaniment with similar rhythmic patterns.

Merry Lads of Ayre. Roose.0636

Musical score for 'Merry Lads of Ayre' in common time (C), key of B-flat major. The score consists of three staves. The first staff ends with a triplet of eighth notes and the word 'FINE'. The second and third staves continue the accompaniment. The third staff ends with the marking 'D.C.' (Da Capo).

Colonel McBean's Reel. Roose.0637

Musical score for 'Colonel McBean's Reel' in common time (C), key of B-flat major. The score consists of three staves. The first staff features several triplet markings over eighth notes. The second and third staves continue the piece, with a final triplet marking in the second staff.

Back of the Change. Roose.0638

Musical score for 'Back of the Change' in G major, 2/4 time. It consists of three staves of music. The first staff begins with a repeat sign and a first ending bracket. The melody is characterized by eighth and sixteenth notes, with some triplet-like patterns. The second and third staves continue the melody with similar rhythmic patterns and some grace notes.

The Birks of Abergeldy. Reel. Roose. 0639

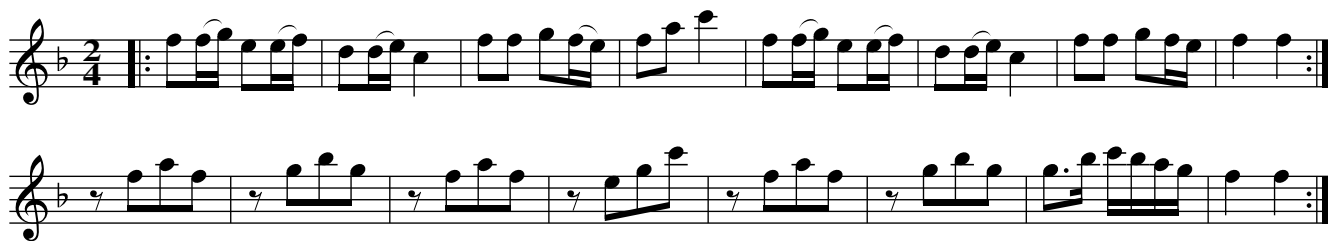
'Reel'

Musical score for 'The Birks of Abergeldy' in B-flat major, 2/4 time. It consists of three staves of music. The first staff begins with a repeat sign and a first ending bracket. The melody features a mix of eighth and sixteenth notes, with some triplet patterns. The second and third staves continue the melody with similar rhythmic patterns and some grace notes.

Kiss My Lady. No.1. Roose.0640

Musical score for 'Kiss My Lady' in 2/4 time. It consists of four staves of music. The first staff begins with a repeat sign and a first ending bracket. The melody is characterized by eighth and sixteenth notes, with some triplet patterns. The second and third staves continue the melody with similar rhythmic patterns and some grace notes. The fourth staff features two trills (tr) over the first two measures.

Kiss My Lady. No.2. Roose.0641



Kiss My Lady. No.3. Roose.0642

Musical score for 'Kiss My Lady. No.3. Roose.0642'. The score is written in 2/4 time and consists of five staves. The key signature has one sharp (F#). The first staff begins with a treble clef and a repeat sign, containing a melody of quarter and eighth notes. The second staff continues the melody. The third staff provides a harmonic accompaniment with a treble clef and a repeat sign, featuring a similar rhythmic pattern. The fourth and fifth staves continue the accompaniment with various rhythmic figures.

The Highland Hills Strathspey. Roose.064

Musical score for 'The Highland Hills Strathspey. Roose.064'. The score is written in 2/4 time and consists of two staves. The key signature has two sharps (F# and C#). The first staff begins with a treble clef and a repeat sign, containing a melody of quarter and eighth notes. The second staff provides a harmonic accompaniment with a treble clef and a repeat sign, featuring a similar rhythmic pattern.

The Boy in the Gap. Roose.0644

Musical score for 'The Boy in the Gap' (Roose.0644). The score is written in treble clef with a key signature of one sharp (F#) and a common time signature (C). It consists of four staves. The first staff begins with a repeat sign and contains a melodic line with a triplet of eighth notes marked with a '3' below it. The second staff continues the melody. The third and fourth staves provide a harmonic accompaniment with a steady eighth-note pattern.

Welcome Home. Roose.0645

Musical score for 'Welcome Home' (Roose.0645). The score is written in treble clef with a key signature of two sharps (F# and C#) and a common time signature (C). It consists of three staves. The first staff begins with a repeat sign and contains a melodic line. The second and third staves provide a harmonic accompaniment with a steady eighth-note pattern.

My Bonny Ann. Roose.0646

Musical score for 'My Bonny Ann' (Roose.0646). The score is written in treble clef with a key signature of one sharp (F#) and a common time signature (C). It consists of three staves. The first staff begins with a repeat sign and contains a melodic line. The second and third staves provide a harmonic accompaniment with a steady eighth-note pattern.