

The Maidens of Kent, Roose.0430

Musical score for 'The Maidens of Kent' (Roose.0430). The score consists of four staves of music in treble clef, 6/8 time, and D major. The first two staves are the first system, and the last two are the second system. The music features a mix of eighth and sixteenth notes, with some rests and a final double bar line with repeat dots.

Roose.0431 Kate of the Dale

Musical score for 'Kate of the Dale' (Roose.0431). The score consists of four staves of music in treble clef, 6/8 time, and D major. The first two staves are the first system, and the last two are the second system. The music features a mix of eighth and sixteenth notes, with some rests and a final double bar line with repeat dots.

Roose.0432 Kitty Grogan

Musical score for 'Kitty Grogan' in G major (one sharp) and common time. It consists of three staves. The first staff is the melody, starting with a treble clef and a common time signature. The second and third staves are accompaniment, starting with a treble clef and a repeat sign. The music features a mix of eighth and sixteenth notes.

The Scots Dance, Roose.0433

Musical score for 'The Scots Dance' in D major (two sharps) and common time. It consists of three staves. The first staff is the melody, starting with a treble clef and a common time signature. The second and third staves are accompaniment, starting with a treble clef and a repeat sign. The music features a mix of eighth and sixteenth notes.

The Mulberry Tree, Roose.0434

Musical score for 'The Mulberry Tree' in D major (two sharps) and common time. It consists of three staves. The first staff is the melody, starting with a treble clef and a common time signature. The second and third staves are accompaniment, starting with a treble clef and a repeat sign. The music features a mix of eighth and sixteenth notes, with some triplets and slurs.

The Contented Shepherd, Roose.0435

Musical score for 'The Contented Shepherd' (Roose.0435). The piece is written in treble clef with a key signature of two sharps (F# and C#) and a 3/8 time signature. It consists of six staves of music. The first staff begins with a treble clef, a key signature of two sharps, and a 3/8 time signature. The melody is composed of eighth and sixteenth notes, with some beamed sixteenth notes. The second staff continues the melody. The third staff begins with a repeat sign (double bar line with two dots) and continues the melody. The fourth staff continues the melody. The fifth staff continues the melody. The sixth staff concludes the piece with a double bar line and repeat dots.

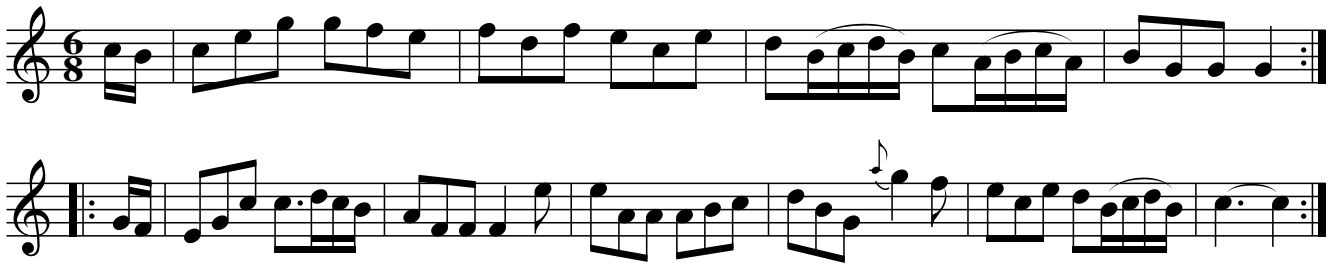
The Midnight Wanderers, Roose.0436

Musical score for 'The Midnight Wanderers' (Roose.0436). The piece is written in treble clef with a key signature of one sharp (F#) and a common time (C) signature. It consists of two staves of music. The first staff begins with a treble clef, a key signature of one sharp, and a common time signature. The melody is composed of eighth and sixteenth notes. The second staff begins with a repeat sign and continues the melody.

Roose.0437 Trip to Galloway

Musical score for 'Roose.0437 Trip to Galloway'. The piece is written in treble clef with a key signature of two sharps (F# and C#) and a common time (C) signature. It consists of two staves of music. The first staff begins with a treble clef, a key signature of two sharps, and a common time signature. The melody is composed of eighth and sixteenth notes. The second staff begins with a repeat sign and continues the melody.

Roose.0438 Bailey's Delight



Roose.0439 Do if You Dare

Musical notation for 'Do if You Dare' in 6/8 time, featuring four staves of music. The first staff begins with a treble clef and a key signature of two flats (B-flat and E-flat). The melody consists of eighth and sixteenth notes. The second and third staves continue the melody, and the fourth staff concludes with a repeat sign and a double bar line.

The Whip, Roose.0440

Musical notation for 'The Whip' in 6/8 time, featuring two staves of music. The first staff begins with a treble clef and a key signature of one sharp (F-sharp). The melody consists of eighth and sixteenth notes. The second staff continues the melody, ending with a repeat sign and a double bar line.

Fortune Well, Roose.0441



Musical score for 'Fortune Well, Roose.0441' in treble clef, 6/8 time, key of D major. The score consists of four staves. The first staff begins with a treble clef, a key signature of two sharps (D major), and a 6/8 time signature. The melody is composed of eighth and quarter notes. The second staff continues the melody. The third staff begins with a repeat sign. The fourth staff concludes the piece with a double bar line and repeat dots.

Roose.0442 Lumly House



Musical score for 'Lumly House, Roose.0442' in treble clef, 6/8 time, key of D major. The score consists of four staves. The first staff begins with a treble clef, a key signature of two sharps (D major), and a 6/8 time signature. The melody is composed of eighth and quarter notes. The second staff continues the melody. The third staff begins with a repeat sign. The fourth staff concludes the piece with a double bar line and repeat dots.

Roose.0443 A Trip to Gibraltar

Musical score for 'A Trip to Gibraltar' in G major, 6/8 time. The score consists of four staves of music. The first staff begins with a treble clef, a key signature of one sharp (F#), and a 6/8 time signature. The melody is written in a single line. The second staff continues the melody. The third staff begins with a repeat sign and contains a more rhythmic, eighth-note melody. The fourth staff continues this rhythmic melody and ends with a double bar line and repeat dots.

The Solar Eclipse, Roose.0444

Musical score for 'The Solar Eclipse' in G major, 6/8 time. The score consists of four staves of music. The first staff begins with a treble clef, a key signature of one sharp (F#), and a 6/8 time signature. The melody is written in a single line. The second staff continues the melody. The third staff begins with a repeat sign and contains a more rhythmic, eighth-note melody. The fourth staff continues this rhythmic melody and ends with a double bar line and repeat dots.

Roose.0445 Tulbury Castle



Musical score for Tulbury Castle, consisting of four staves of music in treble clef, G major, and 6/8 time. The first staff begins with a treble clef, a key signature of one sharp (F#), and a 6/8 time signature. The melody is written in a single line. The second staff continues the melody. The third staff begins with a repeat sign (double bar line with two dots) and continues the melody. The fourth staff concludes the piece with a double bar line and repeat dots.

Trip to Denbigh. Roose.0446



Musical score for Trip to Denbigh, consisting of four staves of music in treble clef, G major, and 6/8 time. The first staff begins with a treble clef, a key signature of one sharp (F#), and a 6/8 time signature. The melody is written in a single line. The second staff continues the melody. The third staff begins with a repeat sign (double bar line with two dots) and continues the melody. The fourth staff concludes the piece with a double bar line and repeat dots.