

Miss Finlay's Delight. Roose.0374
The New Rigg'd Ship, aka. Roose.0374

A musical score for 'Miss Finlay's Delight' in 3/8 time. It consists of six staves of music. The first staff begins with a treble clef and a 3/8 time signature. The melody is simple and consists of eighth and quarter notes. The second staff continues the melody with some eighth-note patterns. The third and fourth staves feature more complex rhythmic patterns, including sixteenth notes. The fifth and sixth staves conclude the piece with a final cadence.

Miss Baird of Newbyths Strathspey. Roose.0375

A musical score for 'Miss Baird of Newbyths Strathspey' in common time (C). It consists of three staves of music. The first staff begins with a treble clef and a common time signature. The melody is more complex than the first piece, featuring many sixteenth and thirty-second notes. The second and third staves continue the intricate melody with various rhythmic patterns and ornaments.

Stormont Lads Strathspey. Roose. 0376

Musical score for Stormont Lads Strathspey. Roose. 0376. The score is written in treble clef, common time (C), and a key signature of one flat (B-flat). It consists of three staves. The first staff contains the main melody. The second staff contains a second voice or accompaniment. The third staff contains a third voice or accompaniment. The piece concludes with a double bar line and repeat dots.

Colonel Robertson Strathspey. Roose.0377

Musical score for Colonel Robertson Strathspey. Roose.0377. The score is written in treble clef, common time (C), and a key signature of one sharp (F#). It consists of three staves. The first staff contains the main melody. The second staff contains a second voice or accompaniment. The third staff contains a third voice or accompaniment. The piece concludes with a double bar line and repeat dots.

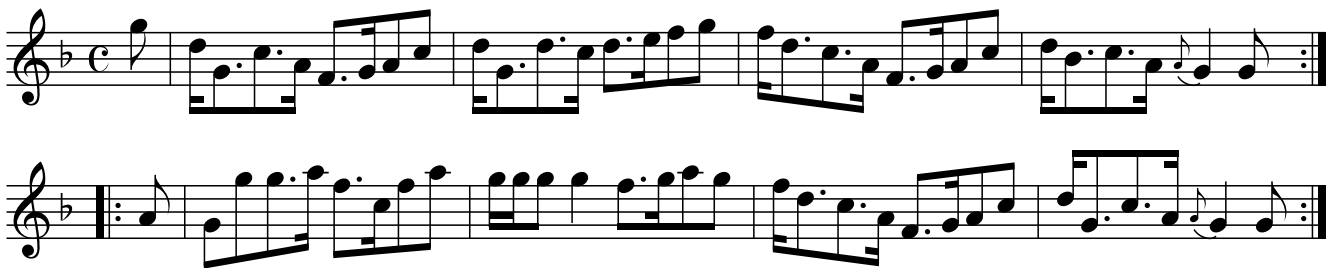
Lady Haddo's Strathspey. Roose.0378

Musical score for Lady Haddo's Strathspey. Roose.0378. The score is written in treble clef, common time (C), and a key signature of one sharp (F#). It consists of three staves. The first staff contains the main melody. The second staff contains a second voice or accompaniment. The third staff contains a third voice or accompaniment. A trill (tr) is indicated above the final note of the second staff. The piece concludes with a double bar line and repeat dots.

Follow Her Over The Border. Roose.0379



Lord Dounes Strathspey. Roose.0380



Lochal's Away To France. Roose.0381



Irish Girl. Roose.0382

Musical score for 'Irish Girl' (Roose.0382). The score is written in treble clef, key of D major (one sharp), and 6/8 time. It consists of four staves of music. The first staff begins with a treble clef, a key signature of one sharp (F#), and a 6/8 time signature. The melody is composed of eighth and sixteenth notes, with some dotted rhythms. The second staff continues the melody. The third and fourth staves feature more complex rhythmic patterns, including sixteenth-note runs and dotted rhythms, ending with repeat signs.

Sir John Henderson's Jigg. Roose.0383

Musical score for 'Sir John Henderson's Jigg' (Roose.0383). The score is written in treble clef, key of D major (one sharp), and 6/8 time. It consists of six staves of music. The first staff begins with a treble clef, a key signature of one sharp (F#), and a 6/8 time signature. The melody is composed of eighth and sixteenth notes, with some dotted rhythms. The second staff continues the melody. The third and fourth staves feature more complex rhythmic patterns, including sixteenth-note runs and dotted rhythms. The fifth and sixth staves continue the melody, ending with repeat signs.

Macfarlane's Strathspey. Roose.0384

Musical notation for Macfarlane's Strathspey. Roose.0384, consisting of three staves of music in treble clef, common time, and a key signature of one flat (B-flat).

Mrs Muir Mackenzie's Reel. Roose.0385

Musical notation for Mrs Muir Mackenzie's Reel. Roose.0385, consisting of four staves of music in treble clef, common time, and a key signature of one flat (B-flat).

Lady Margarets Howard's Strathspey. Roose.0386

Musical notation for Lady Margarets Howard's Strathspey. Roose.0386, consisting of three staves of music in treble clef, common time, and a key signature of two sharps (D major).

The Heddington Assembly. Roose.0387



The musical score for 'The Heddington Assembly' is written in 6/8 time and features a key signature of one sharp (F#). It consists of six staves of treble clef notation. The first staff begins with a treble clef, a sharp sign, and a 6/8 time signature. The melody is composed of eighth and sixteenth notes, with some rests and slurs. The second staff continues the melody, ending with a double bar line and repeat dots. The third staff begins with a repeat sign and continues the melody. The fourth and fifth staves continue the melody with various rhythmic patterns and slurs. The sixth staff concludes the piece with a double bar line and repeat dots.

Mr Macdonald's Reel. Roose.0388



The musical score for 'Mr Macdonald's Reel' is written in 2/4 time and features a key signature of one sharp (F#). It consists of three staves of treble clef notation. The first staff begins with a treble clef, a sharp sign, and a 2/4 time signature. The melody is composed of eighth and sixteenth notes, with some rests and slurs. The second staff continues the melody, ending with a double bar line and repeat dots. The third staff begins with a repeat sign and continues the melody.

Honourable Colonel Wm Henry's Reel. Roose.0389

Musical score for Honourable Colonel Wm Henry's Reel, Roose.0389. The score consists of three staves of music in G major and 2/4 time. The first staff is the melody, the second is the first part of the accompaniment, and the third is the second part. The music features a mix of eighth and sixteenth notes with some triplet patterns.

Mrs Morrison's Strathspey. Roose.0390

Musical score for Mrs Morrison's Strathspey, Roose.0390. The score consists of four staves of music in D major and 2/4 time. The first staff is the melody, the second is the first part of the accompaniment, the third is the second part, and the fourth is the third part. The music is characterized by a steady eighth-note accompaniment and a melodic line with some triplet patterns.

Mary Douglas' Reel. Roose.0391

Musical score for Mary Douglas' Reel, Roose.0391. The score consists of three staves of music in G major and 2/4 time. The first staff is the melody, the second is the first part of the accompaniment, and the third is the second part. The music features a mix of eighth and sixteenth notes with some triplet patterns.

392 Miss Stewart's Reel. Roose.0392

The image displays a musical score for 'Miss Stewart's Reel' in G major (one sharp) and 2/4 time. The score is presented on three staves. The first staff begins with a treble clef, a key signature of one sharp (F#), and a common time signature (C). The melody consists of eighth and sixteenth notes, with some beamed sixteenth notes. The second staff starts with a repeat sign (double bar line with two dots) and continues the melody with similar rhythmic patterns. The third staff concludes the piece with a final cadence, marked by a double bar line and repeat dots. The music is written in a clear, legible style typical of 19th-century manuscript notation.