

The Walling of the Plading. Roose.0360  
The Waulking of the Plaiding? Roose.0360

Musical score for 'The Walling of the Plading' (Roose.0360). The score consists of three staves of music in C major, 2/4 time. The first staff is the melody, the second is the accompaniment, and the third is a more complex accompaniment. The piece ends with a double bar line and repeat dots.

Honourable George Bairds Strathspey. Roose.0361

Musical score for 'Honourable George Bairds Strathspey' (Roose.0361). The score consists of three staves of music in C major, 2/4 time. The first staff is the melody, the second is the accompaniment, and the third is a more complex accompaniment. The piece ends with a double bar line and repeat dots. The word 'sic' is written at the end of the second staff.

Garthland Strathspey. Roose.0362

Musical score for 'Garthland Strathspey' (Roose.0362). The score consists of three staves of music in C major, 2/4 time. The first staff is the melody, the second is the accompaniment, and the third is a more complex accompaniment. The piece ends with a double bar line and repeat dots.

## The Fir Tree. Roose.0363

Musical score for 'The Fir Tree' (Roose.0363). The score is written in treble clef with a key signature of one sharp (F#) and a common time signature (C). It consists of four staves. The first two staves contain the melody, and the last two staves contain the accompaniment. The melody is characterized by eighth and sixteenth notes, often beamed together. The accompaniment features a steady eighth-note pattern.

## Lady Chartellers' Jigg. Roose.0364

Musical score for 'Lady Chartellers' Jigg' (Roose.0364). The score is written in treble clef with a key signature of one sharp (F#) and a 6/8 time signature. It consists of six staves. The first two staves contain the melody, and the last four staves contain the accompaniment. The melody is characterized by eighth and sixteenth notes, often beamed together. The accompaniment features a steady eighth-note pattern.

### The Flaggon. Roose.0365

Musical score for 'The Flaggon' (Roose.0365) in G major and common time. The score consists of six staves of music. The first staff begins with a repeat sign and a first ending bracket. The second staff continues the melody with a second ending bracket. The third staff features a more complex rhythmic pattern with eighth notes and sixteenth notes. The fourth and fifth staves continue this pattern, with the fifth staff ending in a repeat sign. The sixth staff concludes the piece with a final cadence.

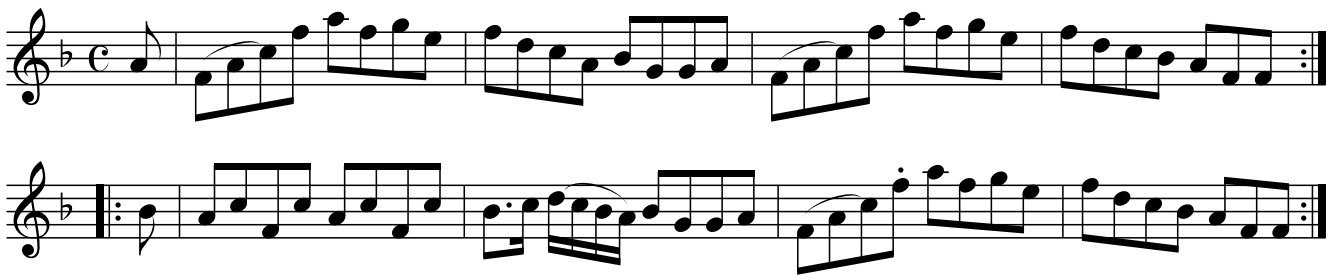
### Sandy O'er the Lee. Roose.0366

Musical score for 'Sandy O'er the Lee' (Roose.0366) in G major and common time. The score consists of four staves of music. The first staff begins with a repeat sign and a first ending bracket. The second staff features a complex rhythmic pattern with eighth notes and sixteenth notes, including a trill (tr) and a first ending bracket. The third staff continues the melody with a trill (tr) and a first ending bracket. The fourth staff concludes the piece with a final cadence, including a trill (tr) and a first ending bracket.

## Lady Baird's Strathspey. Roose.0367



## Lamberton Races Reel. Roose.0368



## Miss Johnston of Hilton Strathspey. Roose.0369



Forest, or... Roo.370  
The Duchess of Hamiltons Delight Roose.0370

Musical score for 'Forest, or... Roo.370' in treble clef, 3/8 time, key of D major. The score consists of four staves. The first staff contains the first line of music. The second staff contains the second line, including a first ending bracket labeled '1' and a second ending bracket labeled '2'. The third staff contains the third line of music. The fourth staff contains the fourth line, including another first ending bracket labeled '1' and a second ending bracket labeled '2'. The piece concludes with a double bar line.

Drummond Castle Jigg. Roose.0371

Musical score for 'Drummond Castle Jigg' in treble clef, 6/8 time, key of D major. The score consists of four staves. The first staff contains the first line of music. The second staff contains the second line of music. The third staff contains the third line of music. The fourth staff contains the fourth line of music. The piece concludes with a double bar line.

## Marry Kitty Strathspey. Roose.0372

Musical score for 'Marry Kitty Strathspey' (Roose.0372). The score is written in treble clef, G major, and common time (C). It consists of three staves. The first staff begins with a treble clef, a key signature of one sharp (F#), and a common time signature. The melody is characterized by frequent eighth-note patterns and some sixteenth-note runs. The second and third staves continue the melody, with the second staff starting with a repeat sign and a first ending bracket. The piece concludes with a double bar line and repeat dots.

## Clanrannald's Reel. Roose.0373

Musical score for 'Clanrannald's Reel' (Roose.0373). The score is written in treble clef, G major, and common time (C). It consists of three staves. The first staff begins with a treble clef, a key signature of one sharp (F#), and a common time signature. The melody is characterized by frequent eighth-note patterns and some sixteenth-note runs. The second and third staves continue the melody, with the second staff starting with a repeat sign and a first ending bracket. The piece concludes with a double bar line and repeat dots.