

Last Pint of Ale. Roose.0215

Musical notation for 'Last Pint of Ale' (Roose.0215). The piece is in treble clef, key of D major (two sharps), and common time (C). It consists of two staves. The first staff begins with a treble clef, a key signature of two sharps, and a common time signature. The melody features a mix of quarter and eighth notes, with some beamed eighth notes and a triplet of eighth notes. The second staff continues the melody with similar rhythmic patterns and concludes with a double bar line and repeat dots.

The Air Balloon. Roose.0216

Musical notation for 'The Air Balloon' (Roose.0216). The piece is in treble clef, key of D major (two sharps), and 6/8 time. It consists of four staves. The first staff begins with a treble clef, a key signature of two sharps, and a 6/8 time signature. The melody is characterized by eighth and sixteenth notes, often beamed together. The second staff continues the melody with similar rhythmic patterns. The third staff features a more active eighth-note melody. The fourth staff concludes the piece with a double bar line and repeat dots.

The Devil On Two Sticks. Roose.0217

Musical notation for 'The Devil On Two Sticks' (Roose.0217). The piece is in treble clef, key of D major (two sharps), and 6/8 time. It consists of three staves. The first staff begins with a treble clef, a key signature of two sharps, and a 6/8 time signature. The melody is composed of eighth and sixteenth notes, with some beaming. The second staff continues the melody with similar rhythmic patterns. The third staff concludes the piece with a double bar line and repeat dots.

Lady Charlton's Fancy. Roose.0218



Musical score for "Lady Charlton's Fancy" (Roose.0218). The score is written in treble clef with a key signature of one sharp (F#) and a time signature of 6/8. It consists of four staves of music. The first two staves appear to be a single melodic line with some phrasing slurs and accents. The last two staves are accompaniment, featuring a steady eighth-note pattern.

Non Mounton's Hunt. Roose.0219
Nun Monkton Hunt, aka. Roose.0219

Musical score for "Non Mouton's Hunt" (Roose.0219), also known as "Nun Monkton Hunt". The score is written in treble clef with a key signature of two sharps (F# and C#) and a time signature of 6/8. It consists of two staves of music. The first staff is a melodic line with various note values and rests. The second staff is an accompaniment line with a similar rhythmic pattern.

The Pope's Toe. Roose.0220



Musical score for "The Pope's Toe" (Roose.0220). The score is written in treble clef with a key signature of one sharp (F#) and a time signature of 2/4. It consists of three staves of music. The first staff is a melodic line with dotted rhythms. The second and third staves are accompaniment lines with a consistent eighth-note pattern.

New Daniel Couper. Roose.0221

Musical score for 'New Daniel Couper. Roose.0221'. The piece is in 2/4 time with a key signature of one sharp (F#). The melody is written on a single staff. It begins with a quarter note G4, followed by an eighth-note pair (A4, B4), and a quarter note C5. The first measure is repeated with a repeat sign. The second measure contains a triplet of eighth notes (D5, E5, F#5), followed by a quarter note G5. The piece concludes with a double bar line and repeat dots.

Corn Riggs are Bonny. Roose.0222

Musical score for 'Corn Riggs are Bonny. Roose.0222'. The piece is in 7/8 time with a key signature of one sharp (F#). The melody is written on a single staff. It begins with a quarter rest, followed by an eighth note G4. The text 'rest added' is written below the first measure. The melody continues with eighth-note pairs and quarter notes. The piece concludes with a double bar line and repeat dots.

Nick's Gee Bit. Roose.0223

Musical score for 'Nick's Gee Bit. Roose.0223'. The piece is in common time (C) with a key signature of one sharp (F#). The melody is written on a single staff. It begins with a quarter note G4, followed by an eighth-note pair (A4, B4), and a quarter note C5. The first measure is repeated with a repeat sign. The melody continues with eighth-note pairs and quarter notes. The piece concludes with a double bar line and repeat dots.

Lasses of the Ferry. Roose.0224

Musical score for 'Lasses of the Ferry. Roose.0224'. The score is written in treble clef with a key signature of two sharps (F# and C#) and a common time signature (C). It consists of three staves of music. The first staff contains the main melody, the second staff contains a more complex accompaniment with many beamed notes, and the third staff contains a simpler accompaniment. The piece ends with a double bar line and repeat dots.

My Lover's but a Laddie yet. Roose.0225

My Love is but a Lassie yet, aka. Roose.0225

Musical score for 'My Lover's but a Laddie yet. Roose.0225'. The score is written in treble clef with a key signature of two sharps (F# and C#) and a common time signature (C). It consists of two staves of music. The first staff contains the main melody, and the second staff contains a more complex accompaniment with many beamed notes. The piece ends with a double bar line and repeat dots.

Lady Betty Ramsays Reel. Roose.0226

Musical score for 'Lady Betty Ramsays Reel. Roose.0226'. The score is written in treble clef with a key signature of one flat (Bb) and a common time signature (C). It consists of two staves of music. The first staff contains the main melody, and the second staff contains a more complex accompaniment with many beamed notes. The piece ends with a double bar line and repeat dots.

Drops of Brandy. Roose.0227

Musical score for 'Drops of Brandy. Roose.0227'. The score is written in treble clef with a key signature of two sharps (F# and C#) and a 3/8 time signature. It consists of two staves of music. The first staff contains the main melody, and the second staff contains a more complex accompaniment with many beamed notes. The piece ends with a double bar line and repeat dots.

Litchfield Races. Roose.0228

Musical score for "Litchfield Races. Roose.0228". The score is written in treble clef with a key signature of one sharp (F#) and a time signature of 6/8. It consists of four staves of music. The first staff begins with a treble clef, a sharp sign, and a 6/8 time signature. The melody is composed of eighth and quarter notes. The second staff continues the melody and ends with a double bar line and repeat dots. The third staff begins with a repeat sign and continues the melody. The fourth staff continues the melody and ends with a double bar line and repeat dots.

Newcastle Races. Roose.0229

Musical score for "Newcastle Races. Roose.0229". The score is written in treble clef with a key signature of one sharp (F#) and a time signature of 6/8. It consists of four staves of music. The first staff begins with a treble clef, a sharp sign, and a 6/8 time signature. The melody is composed of eighth and quarter notes. The second staff continues the melody and ends with a double bar line and repeat dots. The third staff begins with a repeat sign and continues the melody. The fourth staff continues the melody and ends with a double bar line and repeat dots.

Doncaster Races. Roose.0230

Musical score for Doncaster Races. Roose.0230, consisting of four staves of music in treble clef, key of D major, and 6/8 time signature. The first staff begins with a treble clef, a key signature of one sharp (F#), and a 6/8 time signature. The melody consists of eighth and quarter notes. The second staff continues the melody, featuring a trill (marked with a 'v') on the final note. The third staff begins with a repeat sign (double bar line with two dots) and continues the melody. The fourth staff concludes the piece with a trill on the final note and a repeat sign.

Burford Races. Roose.0231

Musical score for Burford Races. Roose.0231, consisting of four staves of music in treble clef, key of D major, and 6/8 time signature. The first staff begins with a treble clef, a key signature of two sharps (F# and C#), and a 6/8 time signature. The melody consists of eighth and quarter notes. The second staff continues the melody. The third staff begins with a repeat sign (double bar line with two dots) and continues the melody. The fourth staff concludes the piece with a repeat sign.

Nottingham Races. Roose.0232

Musical score for Nottingham Races. Roose.0232. The score is written in treble clef, key of D major (two sharps), and 2/4 time. It consists of six staves of music. The first staff begins with a treble clef, a key signature of two sharps, and a 2/4 time signature. The music is a single melodic line. The second staff ends with a double bar line and repeat dots. The third staff begins with a repeat sign. The fourth staff ends with a double bar line and repeat dots. The fifth staff begins with the tempo marking 'Pia' above the first measure. The sixth staff ends with a double bar line and repeat dots.

Chelmsford Races. Roose.0233

Musical score for Chelmsford Races. Roose.0233. The score is written in treble clef, key of B-flat major (two flats), and 3/8 time. It consists of four staves of music. The first staff begins with a treble clef, a key signature of two flats, and a 3/8 time signature. The music is a single melodic line. The second staff ends with a double bar line and repeat dots. The third staff begins with a repeat sign. The fourth staff ends with a double bar line and repeat dots.

Barnet Races. Roose.0234

Musical score for 'Barnet Races. Roose.0234'. The score is written on four staves in treble clef with a key signature of one sharp (F#) and a time signature of 6/8. The melody consists of eighth and sixteenth notes, with some rests and a final double bar line with repeat dots.

Trip to Cork. Roose.0235

Musical score for 'Trip to Cork. Roose.0235'. The score is written on four staves in treble clef with a key signature of one sharp (F#) and a time signature of 6/8. The melody consists of eighth and sixteenth notes, with some rests and a final double bar line with repeat dots.

Trip to Marfleet. Roose.0236

NB

Musical score for 'Trip to Marfleet. Roose.0236' in G major (one sharp) and 6/8 time. The score consists of four staves of music. The first staff begins with a repeat sign and a fermata over the first measure, followed by a series of eighth and sixteenth notes. The second staff continues the melody with similar rhythmic patterns. The third and fourth staves complete the piece with a final cadence.

Trip to Carlisle. Roose.0237

Musical score for 'Trip to Carlisle. Roose.0237' in G major (one sharp) and 6/8 time. The score consists of three staves. The first staff starts with a repeat sign and a fermata. The second staff ends with the word 'FINE' above the final measure. The third staff begins with a repeat sign and a fermata, and ends with the word 'D.C.' above the final measure.

Trip to Paris. Roose.0238

Musical score for 'Trip to Paris. Roose.0238' in G major (one sharp) and 2/4 time. The score consists of two staves. Both staves begin with a repeat sign and a fermata, followed by a series of eighth and sixteenth notes.

Trip to Gateford. Roose.0239

Musical score for 'Trip to Gateford. Roose.0239'. The score consists of four staves of music in treble clef, key signature of two sharps (D major), and 6/8 time signature. The melody is written on a single line. The first staff begins with a treble clef, a key signature of two sharps, and a 6/8 time signature. The second staff ends with a repeat sign. The third staff begins with a repeat sign. The fourth staff ends with a repeat sign.

Trip to Bristol. Roose.0240

Musical score for 'Trip to Bristol. Roose.0240'. The score consists of four staves of music in treble clef, key signature of two sharps (D major), and 6/8 time signature. The melody is written on a single line. The first staff begins with a treble clef, a key signature of two sharps, and a 6/8 time signature. The second staff ends with a repeat sign. The third staff begins with a repeat sign. The fourth staff ends with a repeat sign.

Behind the Bush in the Garden. Roose.0241

Fourpence Ha'penny Farthing, aka. Roose.0241

Perriwig Maker of Derby. Roose.0241

Musical score for 'Behind the Bush in the Garden' in G major, 6/8 time. The score consists of four staves of music. The first staff begins with a treble clef, a key signature of one sharp (F#), and a 6/8 time signature. The melody is written in a simple, folk-like style with eighth and quarter notes. The second staff continues the melody, ending with a double bar line and repeat dots. The third staff begins with a repeat sign and continues the melody. The fourth staff concludes the piece with a final double bar line and repeat dots.

Bonny Kate. Roose.0242

Musical score for 'Bonny Kate' in G major, common time (C). The score consists of four staves of music. The first staff begins with a treble clef, a key signature of one sharp (F#), and a common time signature. The melody is written in a simple, folk-like style with eighth and quarter notes. The second staff continues the melody, ending with a double bar line and repeat dots. The third staff begins with a repeat sign and continues the melody. The fourth staff concludes the piece with a final double bar line and repeat dots.

Headon Assembly. Roose.0243

Hedon Assembly. Roose.0243

Musical notation for Headon Assembly. Roose.0243. The piece is in 2/4 time with a key signature of one flat (Bb). It consists of two staves. The first staff begins with a treble clef and a key signature of one flat. The second staff begins with a repeat sign and a key signature of one flat. A 'NB' annotation is placed above the second staff.

Dover Pier. Roose.0244

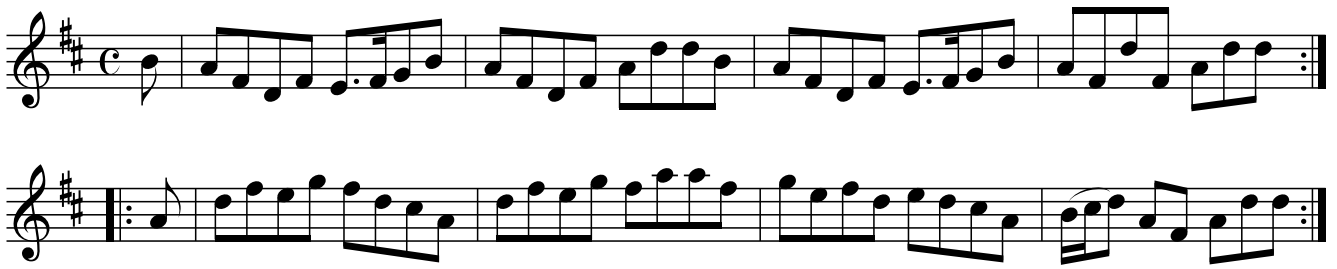
Musical notation for Dover Pier. Roose.0244. The piece is in 2/4 time with a key signature of one flat (Bb). It consists of two staves. The first staff begins with a treble clef and a key signature of one flat. A 'NB' annotation is placed above the first staff. The second staff begins with a repeat sign and a key signature of one flat. An 'NB2' annotation is placed below the second staff.

Morgan Ratler. Roose.0245

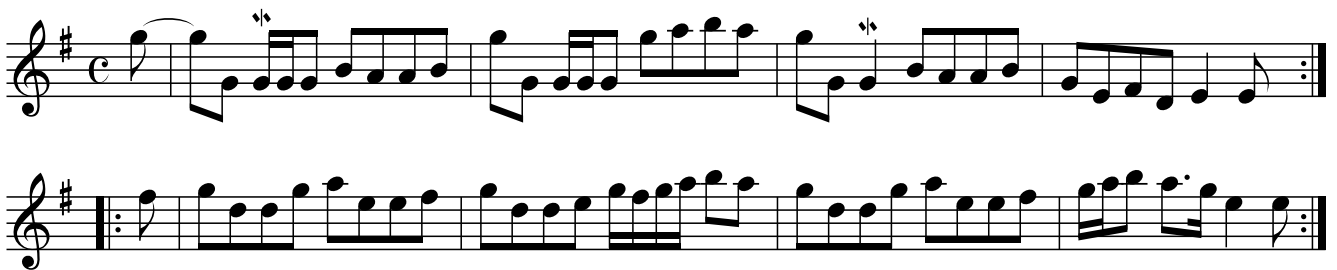
Musical notation for Morgan Ratler. Roose.0245. The piece is in 6/8 time with a key signature of two sharps (D major). It consists of six staves, all beginning with a treble clef and a key signature of two sharps. Each staff contains a line of musical notation.

Knock Her Down Sussie[?]. Roose.0246

Knock Her Down Suzy[?]. Roose.0246



The Whigs of Fife. Roose.0247



The Oak Stick. Roose.0248



Trip to Matlock. Roose.0249

Musical score for 'Trip to Matlock. Roose.0249'. The score is written in treble clef with a 6/8 time signature. It consists of four staves of music. The first staff begins with a treble clef and a 6/8 time signature. The second staff ends with a double bar line and repeat dots. The third staff begins with a repeat sign. The fourth staff ends with a double bar line and repeat dots.

Trip to Oatlands. Roose.0250

Musical score for 'Trip to Oatlands. Roose.0250'. The score is written in treble clef with a 6/8 time signature and a key signature of one flat. It consists of four staves of music. The first staff begins with a treble clef, a 6/8 time signature, and a key signature of one flat. The second staff ends with a double bar line and repeat dots. The third staff begins with a repeat sign. The fourth staff ends with a double bar line and repeat dots.

The Ducks dang over me Daddie. Roose.0251

She Wants a Fellow, aka. Roose.0251

The Buff Coat Hath No Fellow, aka. Roose.0251

Three staves of musical notation in treble clef, key signature of two sharps (D major), and 6/8 time signature. The first staff contains the main melody. The second staff begins with a repeat sign and the annotation "NB" above it. The third staff continues the melody and ends with a double bar line and repeat dots.

A Bonny Lass to Marry Me. Roose.0252

Two staves of musical notation in treble clef, key signature of two sharps (D major), and common time (C). The first staff contains the main melody and includes the annotation "Two sharps in ms" below it. The second staff begins with a repeat sign and continues the melody, ending with a double bar line and repeat dots.