

The Wags of Windsor. Pn1801.01

"401""1801"



1st & 2nd Cu:change side and set,back again and set, lead down 1sr Cu: and set,1st & 2nd Cu: la Pousette.

Royal Review. Pn1801.02

"402"



1st & 2nd Cu:Set and hands across .| the same back again :|
lead down the middle up again :|. right and left :|

The Tambourine. Pn1801.03

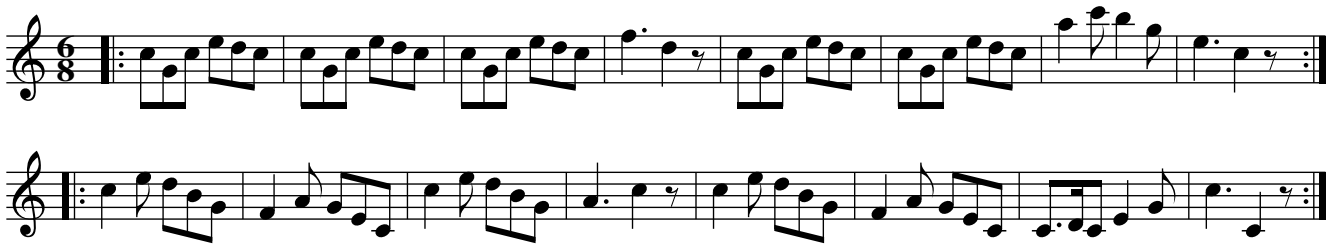
"403"



Cast of(f) 2nd Cu: up again .| Hands 4 half round and back again :|
lead down the middle up again :|. Allemand with right Hands and left :|

The Turnpike Gate. Pn1801.04

"404"



1st & 2nd Cu: Set & hands across .| same back again :|
lead down the middle and up again :|. right and left at top :|

Colonel Harcourts Reel. Pn1801.05

"405"

Musical notation for 'Colonel Harcourts Reel. Pn1801.05'. It consists of four staves of music in 2/4 time with a key signature of one sharp (F#). The notation includes various dynamics such as *p*, *mf*, *rf*, *dim*, and *ff*, as well as performance markings like *tr* (trill) and *Cres* (crescendo). The piece features a mix of eighth and sixteenth notes with some triplet patterns.

Set and change sides and back again .| lead down the middle and poussette

Lady Saltouns Strathspey. Pn1801.06

"4""p185"

Musical notation for 'Lady Saltouns Strathspey. Pn1801.06'. It consists of three staves of music in 2/4 time with a key signature of one flat (Bb). The notation is primarily composed of eighth and sixteenth notes, characteristic of a strathspey. The piece starts with a repeat sign.

Turn your Partner half round with your right hand, turn the sides with the left hand .|
turn sides with the right hand,
turn Partner with your left hand :| lead down, 2nd Cu: up again :|. Allemand :|

Devil among the Taylors. Pn1801.07

"447""p184"

The musical notation for 'Devil among the Taylors. Pn1801.07' consists of four staves of music in treble clef, key of D major (two sharps), and common time (C). The first staff begins with a repeat sign. The melody is a continuous sequence of eighth and sixteenth notes, with some rests. The second and fourth staves end with repeat signs and a double bar line.

1st Gent: take hands with 2nd Lady and lead down 2 Cu: & up again .!1st Lady the same with 2 Gent :!
 1st Cu: lead down 2 Cu: up again :!. right and left at top :!

Broad Sword Hornpipe. Pn1801.08

"448"

The musical notation for 'Broad Sword Hornpipe. Pn1801.08' consists of two staves of music in treble clef, key of D major (two sharps), and 2/4 time. The first staff begins with a repeat sign. The melody features a mix of eighth and sixteenth notes, with some triplet-like patterns. The second staff ends with a repeat sign and a double bar line.

1st Lady set to the 2d Gent: and turn the 3d gent :!1st Gent:set to the 2d Lady and turn the 3d Lady –
 lead down the middle and up again :!. Allemande :!

New Drops of Brandy. Pn1801.09

"449"

The musical notation for 'New Drops of Brandy. Pn1801.09' consists of two staves of music in treble clef, key of D major (two sharps), and 9/8 time. The first staff begins with a repeat sign. The melody is composed of eighth and sixteenth notes. The second staff ends with a repeat sign and a double bar line.

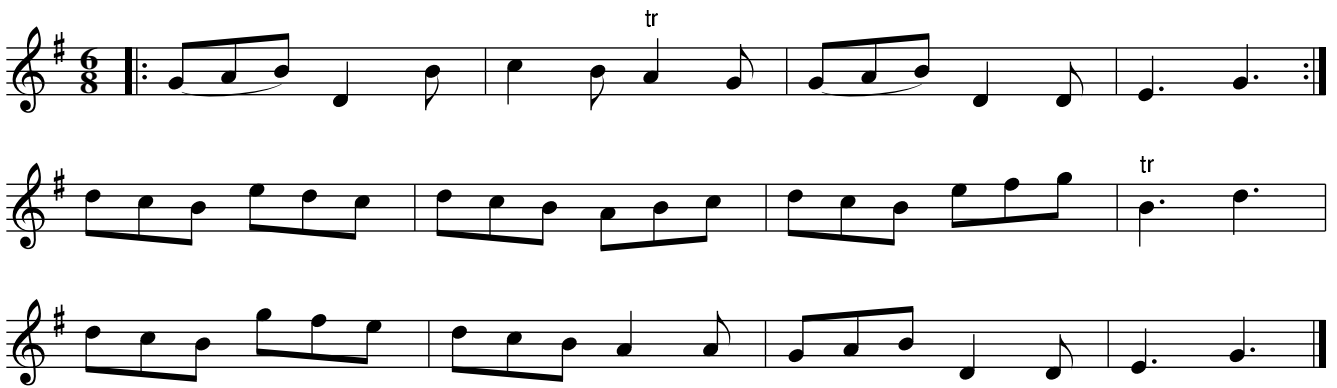
1st & 2d Cu: foot it and change sides .! foot it and change sides back again :!
 lead down the middle :!. up again & cast off :!

Grinders. Pn1801.10

"450""p185"

1st Gent: foot to his Partner and turn her with the right hand .|
 foot it and turn her with the left hand :|
 Lead down 2 Cu: .|. up again and cast of(f) :|

Merrily dance the Quakers. Pn1801.11

"451""p186"

1st Gent: follows his Partner round the 2d Cu: .| the Lady follow her partner back again :|
 lead down the middle & Allemande :|

Swinley Camp. Pn1801.12

"452"

1st Cu: set to 2d Lady and hands 3 round .| set to the 2d Gent and hands 3 round :|
 lead down the middle, up again & turn your Partner :|

Cheshire Round. Pn1801.13

"453"



C naturals introduced into the second part. They are C#s in the original

1st Cu: half figure with 2d Cu: and turn .| half figure again and turn :|
cross over 1 Cu: and turn :|. right and left at top :|

Point of Honor. Pn1801.14

"454""p187"



Cross over one Cu: and turn .| cross over another Cu: and turn :|
lead up to the top and Cast of(f) :|. Allemande right & left at top :|

Brighton Races. Pn1801.15

"455""p188"



1st Lady goes round the 2d Cu: her Partner follow her .| follow back to proper places :|
lead down two Cu :|. up again & cast off :|

Miss Ross's Fancy. Pn1801.16

"456"



Hands 6 quite round, the same back again – Promenade 3 Cu: then la Poussett.

Russian Travellers. Pn1801.17

"457"



Turn your Partner with right hand .| turn back again with left hand :|
lead down the middle, up again and cast off :|.
Hands 6 half round and back again. :|

Devil or no Devil. Pn1801.18

"458""p189"



1st Lady hey with her Partner and 2d Gent .|1st Gent hey with his Partner & 2d Lady :|
lead down 2Cu:,up again :|. right and left at top :|

Lady Lucy Ramsays favorite. Pn1801.19

"459""p190"



1st Lady take 2d Gent by the right hand and the 3d Gent by the left hand & foot it all 3 to the outside of the room
 1st Gent at the same time take hands with 2d & 3d Ladies and foot it to the opposite side of the room .
 Turn faces and foot to each other :| lead down 2 Cu: :|. up again and turn your Partner :|

Duke of Bronti's favorite. Pn1801.20

"460"

Musical notation for 'Duke of Bronti's favorite. Pn1801.20'. It consists of three staves of music in 3/8 time. The first staff is a treble clef melody. The second and third staves are accompaniment parts, with the second staff in treble clef and the third in bass clef. Both the second and third staves have first and second endings marked with '1' and '2' above the notes.

1st Lady turn the 2d Gent .|1st Gent turn the 2d Gent :|
 Le Poussette with the 2d Cu: round and a half :||: right and left :||

Master Sitwells fancy. Pn1801.21

"461"

Musical notation for 'Master Sitwells fancy. Pn1801.21'. It consists of two staves of music in B-flat major and common time. The first staff is a treble clef melody. The second staff is an accompaniment part in bass clef, featuring first and second endings marked with '1' and '2' above the notes.

Foot it and cast of 2 Cu: .| foot it and cast up again :| head down 2 Cu: :|. up again and cast of:||: swing corners:|| lead out sides :|

New Century. Pn1801.22

"462"

The musical score for 'New Century. Pn1801.22' consists of three staves of music in 2/4 time, key of B-flat major. The first staff begins with a treble clef and a key signature of one flat. The second and third staves continue the melody and accompaniment. The piece concludes with a double bar line and repeat dots.

The page of this tune is missing part of the right hand edge and the last half of bar 4 is missing.
 B2 is inferred
 Set and change sides .| back again :| lead down the middle, up again & cast off :||: right and left at top :||

Prince Wm. of Glos'ter's Waltz. Pn1801.23

"463"

The musical score for 'Prince Wm. of Glos'ter's Waltz. Pn1801.23' consists of three staves of music in 3/8 time, key of B-flat major. The first staff begins with a treble clef and a key signature of one flat. The second and third staves continue the melody and accompaniment. The piece concludes with a double bar line and repeat dots.

1st Lady set to 2d Gent & change places .|
 1st Gent set to 2d lady and change places :|
 1st & 2d Cu: Pousette :||: right and left round :||

Duchess of Devonshires Reel. Pn1801.24

"464"

The musical score for 'Duchess of Devonshires Reel. Pn1801.24' consists of three staves of music in common time (C), key of C major. The first staff begins with a treble clef and a key signature of no sharps or flats. The second and third staves continue the melody and accompaniment. The piece concludes with a double bar line and repeat dots.

Cast off 2 Cu: .| up again :| lead down 2 Cu: up again – cast off :|
 turn opposite corners :|| lead out sides :|