

## The Tatler. PFD2.001



Note– the tune is to be play'd quite through  
 The first man leads his partner up and down  
 the 2d Cu do the same at the same time  
 then the two men lead out and in  
 and the two women do the same at the same time  
 Then hands all four quite round and cast off .|  
 The 2d Cu being at top, they cross over and turn,  
 then the first Cu cross over and back to back then clap Hands  
 Sides, then with your partners and turn single

## Soulton Jigg. PFD2.002



The first strain twice, and the last but once  
 The first couple sett and cast off then clap hands and turn sides  
 The second couple do the same. This to the first strain play'd twice  
 The first man change places with the second woman, and the first woman with the second man  
 Then all four sett and turn single, then right and left hands half round,  
 then sett and cast off. This to the last strain play'd once.

## The Female Tatler. PFD2.003



Each strain is to be play'd twice over  
 The first man sett to the second woman, and turn her  
 The first woman and second man do the same. This to the first strain play'd twice.  
 Clap hands with your partners and turn, then right and left hands half round  
 then lead your partner up to the top and cast off, then right and left hands quite round  
 This to the last strain play'd twice

## Orielson House. PFD2.004



Each strain twice

The first and second couple sett across and turn all four round single  
then sett again and turn to your own places

This to the first starin play'd twice

Then cross below the second couple, and up again to your own places

the first man change places with the second woman, and the frirst woman with the second man  
then hands round and cast off. This to the second strain play'd twice

## Madame Betty. PFD2.005



Each strain twice over

The first couple go the whole figure through the second couple

then cast off and lead with inside of the third couple and cast up into the second couple's place

This to the first strain play'd twice

Then lead up through the second couple and cast off

then right and left hands round, and sett to your partner and cast off

This to the second strain play'd twice

## Old Noll's Hornpipe. PFD2.006



The first strain twice, and the last but once.

The first couple figure through the 2d couple .!

Then cast off and turn his partner in the 2d Cu place :!

Then the 1st man change places with the 3d Wo. and the 1st Wo. with the 3d man

and go quite round, and cast off below the 3d Cu and lead quite through the top

then right and left quite round with the top Cu and into the 2d Cu place .!

## Mr. Heath's Dance. PFD2.007



The first strain twice, and the last but once.

The first couple cast off and tun the third couple, then sett and turn up to your own places

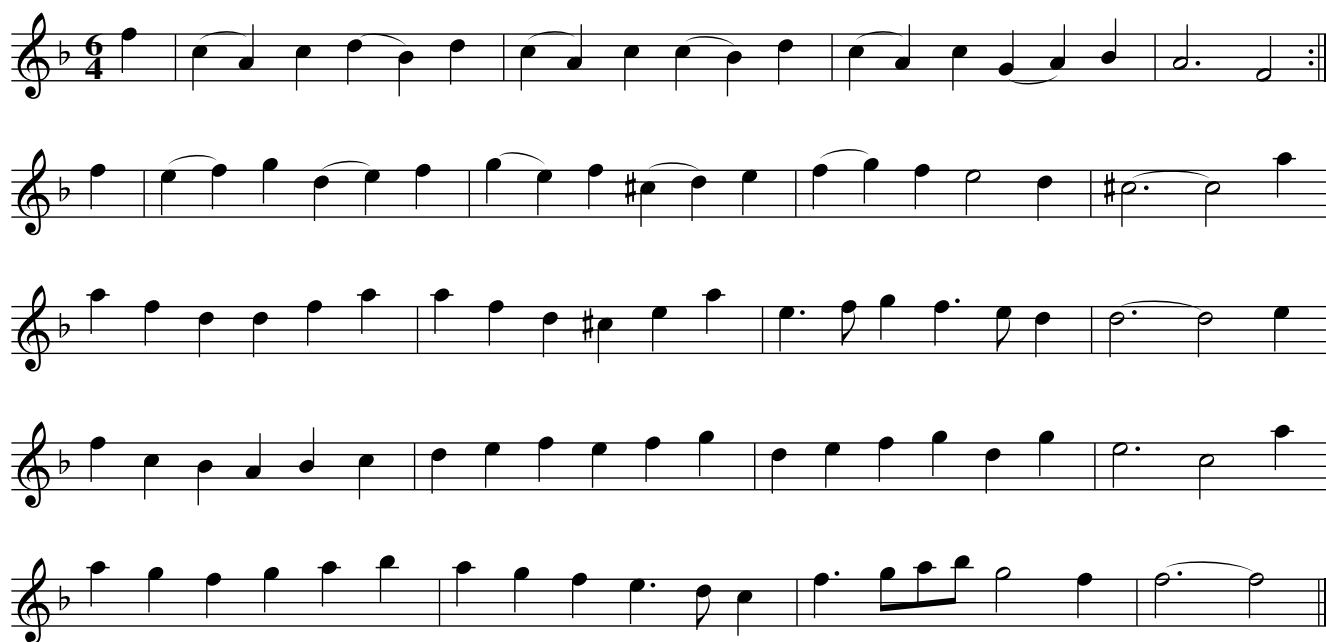
This to the first strain play'd twice

Then first couple cast off and take hands with the second couple and go quite round

then go the whole figure with the third couple and turn your partner in the second couples place

This to the last strain play'd once

## Lady Herbert's Delight. PFD2.008



The first strain is to be play'd twice, and the last but once.

The first man turns the second man half round, the first woman turns the second woman half round at the same time

then turn partners in each others places, and right and left half round

To the first strain play'd twice

The first man cast below the third couple, the first woman at the same time slip down between the second couple and cast up and meet in the middle;

Sett and turn. The first man go round the 2d couple till he comes into his place

The first woman goes quite round the 3d couple, and meets her partner in the 2d couples place. The last strain play'd once

## Lord Hereford's Delight. PFD2.009



Each strain to be play'd twice over.

The first couple clap hands and cast off then lead through the third couple  
and cast up into the second couples place, then clap hands and cast up and turn

This to the first strain play'd twice

The first couple slip down the middle and fall back, then the first man takes hands  
with the second and third men, the first woman do the same with the second and third women  
then all change places, and then sett and change to your proper places

This to the second strain twice

## Bonny Lass, The. PFD2.010



The first strain is to be play'd twice, and the last but once.

The first couple cross over, then sett and cast off below the third couple  
and then cast above the third couple, then sett and cross up to the top

This to the first strain play'd twice

The two men change places with the two women, then hands across all four half round

Then first man lead his partner through the second couple and turn his partner in the second couples place

This to the last strain play'd once



## Shropshire Round. PFD2.011



The first and second strain is to be play'd twice, and the last but once.

The first man setts to the second woman and cast off.

The 2d woman slips up the middle the same time and casts off;

The 1st man being in the 2d mans place, setts to his partner, she casts off;

The 1st man slips up the middle at the same time and casts off

This to the first strain play'd twice

The 1st man go the figure of 8 through the 3d couple and the 1st Wo through the 2d Cu at the same time.

Then the 1st Wo figures through the 3d Cu and the man through the 2d Cu

This to the second strain play'd twice

The 1st man cast below the 3d Cu, the 1st Wo cast up to the top and meet in the middle of the room and turn

This to the last strain play'd once

## Moreton Castle. PFD2.012



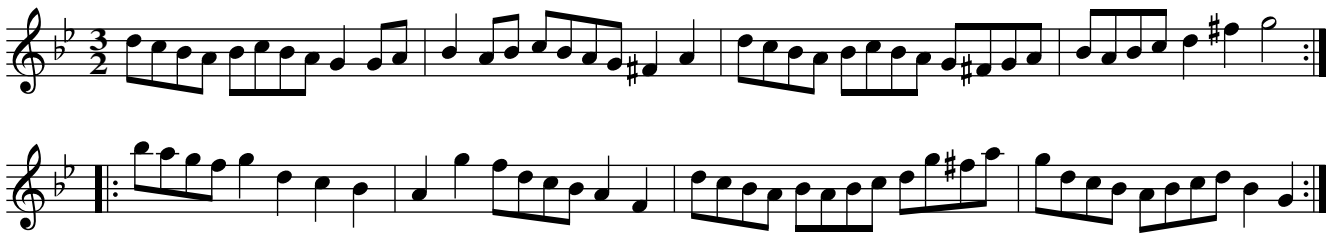
The first strain is to be play'd twice, and the first but once over.  
 The two 1st men go through the two 1st women, and cast into their places and turn,  
 The first couple lead through the second couple and cast up and turn  
 This to the frist strain play'd twice  
 The first couple half figure in the second couple, and cast off and turn  
 Then cast below the third couple and lead up to the top and cast off  
 This to the last strain play'd once

## Young Sir John. PFD2.013



Each strain is to be play'd twice over.  
 The first couple slip down the middle and turn single  
 then cast off below the third couple  
 This to the first strain play'd twice  
 Then cross above the third couple, then cross up to the top,  
 Kiss your partner and cast off  
 This to the last strain play'd twice

## Jolly Widow, The. PFD2.014



Each strain is to be play'd twice over.

The 1st Cu take hands with the 2d Cu and lead down, then cast off below the 3d Cu

Then fall fall back with the 3d Cu, and cast up into the 2d Cu place

This to the first strain play'd twice

Then the 1st Cu cross up to the top, and go the figure through the 2d Cu

Then take hands and lead down the middle and up again and cast off

This to the last strain play'd twice

## Shawbury Park. PFD2.015



Each strain to be play'd twice over.

The 1st Cu go with inside of the 2d Cu, then on the outside of the 3d Cu

and lead up to the top and cast off, then the 2d Cu do the same

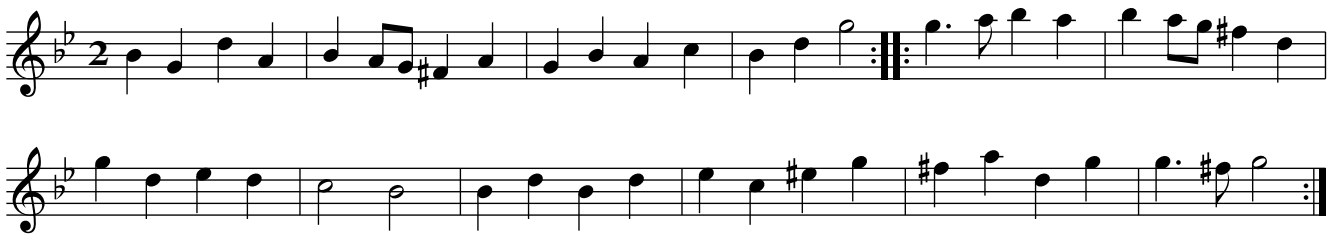
This to the 1st strain play'd twice

Then the 1st and 2d men sett to their partners, and take hands and go quite round'

then lead between the 2d Cu and cast up, then right and left hands half round

This to the last strain play'd twice

## Old Harry. PFD2.016



Each strain twice

The 1st Cu whole figure through the 2d Cu and be at top .l

then clap and cast off :l

Then the 1st Cu lead through the 3rd Cu and cast up a top,

and cross over and half figure with the top Cu, and stand in the 2d Cu place .l

Then cast up at top and lead through the 3d Cu, and through the 2d Cu and turn :l

## St.Bride's. PFD2.017



Each strain is to be play'd twice over.

The 1st Cu go the Hey with the 2d and 3d Cus, and cast off into the 2d Cu place

then hands quite round with the 3d Cu and cast off up to the top

This to the first strain play'd twice

The 1st Cu cross the inside of the 2d Cu, and below the 3d Cu, then cross up to the 2d Cu place

Then 1st man change places with the 2d Wo, and the 1st Wo with the 2d man, then Hands

This to the second strain play'd twice

## Hordly Hall. PFD2.018



The first strain is to be play'd twice, and the last but once.

The 1st Cu cast off below the 3d Cu, and cross up to the 2d Cu place .!

The 2d Cu do the same :!

The 1st man change places with the 2d Wo, and the 1st Wo with the second man

then the 1st Cu cast off below the 3d Cu and the 2d Cu cast below the 1st Cu at the same time

Then the 2d Cu casts up to the top, and the 1st Cu follow you at the same time

which brings the 1st Cu into the 2d Cu place .!

## Daphne's Delight. PFD2.019



Each strain twice.

The 1st Cu cast off and cross below the 3d Cu, and turn up the middle in the 2d Cu place

This to the first strain play'd twice

Then hands across with the 2d Cu and go half round and turn single

then hands back again, and right and left quite round

This to the last strain play'd twice

## St.David's Day. PFD2.020



Each strain twice over.

The 1st two men change places with their women

then 1st Cu cast off and change places again, then the 2d Cu cast off

This to the first strain play'd twice

Hands half round, then clap hands with your partner, and turn all four single;

Then lead up abreast and cast off

This to the second strain play'd twice

## The Penelope. PFD2.021



Each strain is to be play'd twice over.

The 1st Cu cast off and lead through the 3d Cu, and cast up to the 2d Cu place,

then cross over to the top and figure in the 2d Cu

This to the 1st strain play'd twice

The 1st man casts off, and his partner slips down the middle and casts up, and he slips up at the same time

Then the 1st Wo casts off, and the 1st man slips down the middle and casts up

Then the 1st man takes his woman by the right hand and leads her round the 2d man

then up the middle and cast up

This to the last strain play'd twice

## New Margery. PFD2.022



Each strain is to be play'd twice over.

The first two men setts to their partners and turn single, then turn half round

Then all four sett and go half round again, which brings the 1st Cu into the 2d Cu place

This is to the first strain play'd twice

The 1st cu cast off and turn, then the 1st man change places with the 2d Wo

and the 1st Wo with the 2d man, and turn partners

This to the last strain play'd twice

## Welch Whim. PFD2.023



Each strain twice.

The first man setts to his partner and casts off, then sett across with the 3d Cu and turn all four single

This to the first strain play'd twice

Then the 1st man change places with the 2d Wo, and the 1st Wo with the 2d man,

then hands all four half round, and cast of below the 3d Cu

and lead up to the top and cast off again

This to the last strain play'd twice

## Hailston Jigg. PFD2.024



Each strain twice.

The 1st man setts to the 2d Wo and casts off,

The 1st Wo setts to her partner, who is in the 2d man's place, and cast off

This to the first strain play'd twice

Then go the figure in the 3d Cu, then figure at the top

Then the 1st man change places with the 2d Wo, and the 1st Wo with the 2d man

Then right and left quite round

This to the last strain play'd twice

## Hoxton Square. PFD2.025



Each strain is to be play'd twice over.

The first two men fall back, the Wo do the same

Then 1st man turn right hands with the 2d man, the 1st Wo do the same  
then half figure .!

Now the man is on the Wos side begins as at first :!

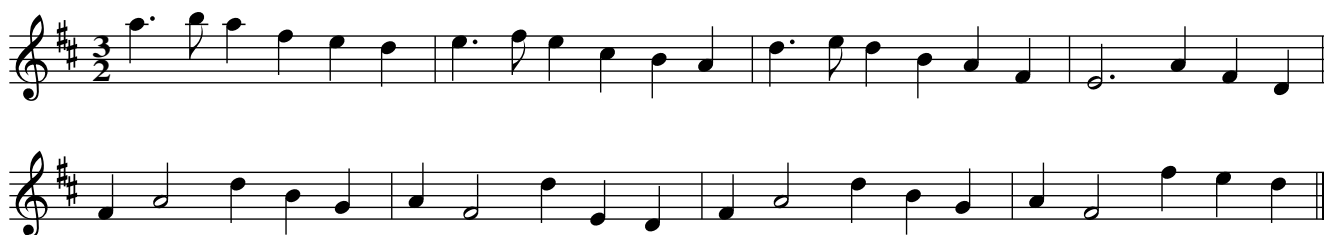
Now they are all in their proper places; the 1st man casts off and goes round into the 1st Wo place,  
the Wo following hm then back again, all into their proper places .!

Clap hands then all four take hands, and go clear round with your faces outward

Then turn single, and then right and left :!



## Paul's Alley. PFD2.026



The 1st Cu take both hands and turn down the middle into the 2d Cu place  
 while the 2d Cu cast up slow and meet above  
 This to the first strain play'd once  
 The same again, that is the 2d Cu turn down the middle and the 1st Cu cast up  
 This to the first strain play'd twice  
 The two men lead out to the wall quick, then change hands and lead in again  
 then both turn round single and foot it, or foot it twice  
 The women doing the same at the same time  
 This to the last strain play'd once  
 Then beginning with your partners go right hands and left half round  
 This to the last strain play'd twice

## St.Margaret's Hill. PFD2.027



The first strain once, and the last twice.  
 The 1st Cu cast off both together, the man falls in between the 3d Cu  
 and the Wo falls in between the 2d Cu then fall back and hands half round .l  
 The 1st man turns the 3d Wo and his partner turn the 2d man at the same time  
 Then turn your partner half round and lead her through the bottom couple  
 and come up and turn her. Then the Wo turns the 3d man, and her partner turns the 2d Wo  
 both at once, then turn hands half round, and lead through the upper couple  
 and cast off and turn :l

## New Man Tyger. PFD2.028



The first strain twice, and the last but once.  
 The 1st man setts to the 2d Wo, then turn single and cast off  
 Then turn the 2d Wo and stand below .!  
 Then the 1st Wo do the same :!  
 Then both cross over the 3d Cu and single figure;  
 Then right and left to the top, then both cross up to the top and single figure  
 Then right and left to the bottom

## Duke of Malborough's March. PFD2.029



Each strain is to be play'd but once.  
 The 1st and 2d man move up 2 or 3 steps, and turn back to the left into their own places again;  
 The Wo move down at the same time and do the same .!  
 Each man take his Wo by the right hand and change places with her  
 Men with their faces down, Wo with theirs up, then all turn single to the left-hand from each other  
 to each others place; men being improper .!  
 Then 1st man and 2d Wo goes half round their own partners on the outside  
 and turn right hands round, the 1st man ends below, with the 2d above .!  
 The 1st Wo and the 2d man do the same after them .!  
 And so to the end

## Donawert Pass. PFD2.030



The 1st man sett to his Wo, and then take hands with the 2d man and turn round into his own place,  
 The 1st and 2d Wo do the like at the same time, then the 1st Cu cross over  
 into the 2d Cu place, then all four take hands and lead up abreast  
 then the 1st man cross over and go below the 2d man, while the 1st Wo goes below the 2d Wo  
 and clap hands, then all four hands and go quite round, the other Cu do the same .!

## Hochstet Battle. PFD2.031



The two men take hands and lead to the wall, and both cast off into their own places again  
 and sett, the two Wo do the same at the same time .!  
 Then the 1st Cu lead through the 2d Cu, and cast up into their own places :!  
 Then cross over into the 2d Cu place, and lead up all backwards,  
 and forwards, and then half figure into your own places .!

## Blenheim Pound. PFD2.032



Each strain twice.

The 1st man turns the 2d Wo once round .!

The 1st Wo turns the 2d man once round :!

Then cross over and lead up all four abreast, the 1st Cu being between the 2d Cu .!

Then the 1st Cu cast off, and right and left quite round :!

## Katherine Street. PFD2.033



Each strain is to be play'd twice over.

The 1st Cu back to back with the 2d Cu, and then with their partners

This to the 1st strain play'd once

The 1st Cu turn the 2d Cu, and then turn their own

This to the first strain play'd twice

Meet all four and sett, then turn single and clap hands, all four going quite round

This to the last strain play'd once

The 1st Cu go the figure through the 2d Cu, and cross over and turn their own partners

This to the last strain play'd twice

## Frisk and Airy. PFD2.034



Each strain twice.

The 1st Cu cast off and clap hands

then they being in the 2d Cu place, the 2d Cu cast off and do the same

This to the first strain play'd twice

Then they draw the 1st Cu into the 2d, and the 2d into the 1st Cu places

Then right and left, then 1st Cu cast off and turn it out

This to the last strain play'd twice

## Subligny's Minuet. PFD2.035

ABACA



B

C



First part again



End with the first strain

Each Strain Twice Over.

The 1st man minuet with the 2d Wo and turn her round with his right hand .l

Then 1st Wo do the same with the 2d man :l

Then 1st Cu hands round with the 2d Cu .l

Then cast off and lead through the 3d Cu and through the 2d Cu  
and turn single in the 2d Cu place :l

Then 1st man change places with the 2d Wo and the 1st Wo with the 2d man and go quite round .l

Then right and left quite round with the 2d Cu and lead through the 3d Cu and turn



## Old Roger, The New Way. PFD2.038



Each strain is to be play'd twice over.

The 1st Cu lead down and cast up, then cast off and lead down the 3d Cu and cast up;

Then the 1st man turn the 3d Wo and the 1st Wo turn the 2d man,

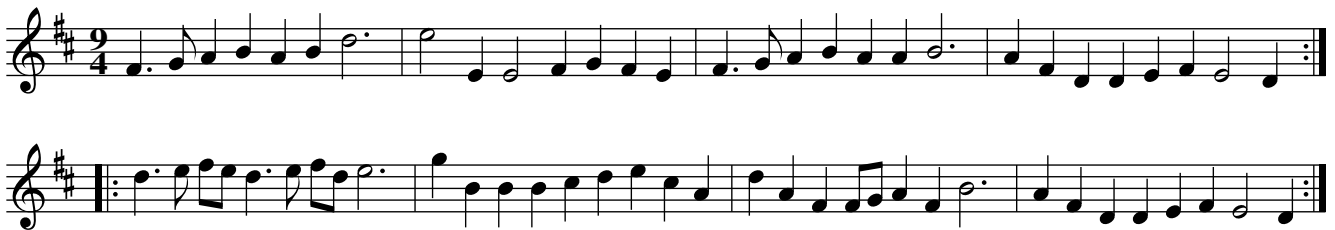
then turn your own partner, then the 1st man turn the 2d Wo

and the 1st Wo turn the 3d man, then turn partners

Then go the half figure of 8 and cast up, and cross over and turn

## New Roger, or. PFD2.039

Don Boin. PFD2.039



This tune is to be play'd twice over, and each strain twice over.

The 1st Cu lead through the 2d Cu then cast up and cast off .!

Lead through the 3d Cu cast up and turn single :!

Then 1st man turn the 3d Wo, and the 1st Wo the 2d man at the same time, and turn your partner .!

The the 1st Wo turn the 3d man, and the 1st man the 2d Wo at the same time and turn his partner :!

Then 1st man whole figure at the bottom, and the 1st Wo at the top at the same time

Then 1st Wo whole figure at the bottom, and her man at top at the same time .!

Then 1st man cross behind the 2d Wo and the 1st Wo cross behind the 3d man at the same time  
and cast both into the 2d Cu place, and turn your partner

## Queen Ann's Coronation Day. PFD2.040



Each strain is to be play'd twice over.

The 1st man setts to the 2d Wo, and turn single, then turn her;

Then your partner setts to the 2d man and does the same :|

Then the 1st man change places with the 2d Wo, and your partner change places with the 2d man,

Then hands quite round, and lead through the 3d Cu and cast up

Then lead through the uppermost Cu and cast off and turn

## Lambeth Ferry. PFD2.041



Each strain twice over.

The 1st man setts to the 2d Wo, then turn her with his right hand

Then your partner with your left hand; then your partner does the same likewise :|

Then cross over and figure in, and right and left quite round

Then the single figure at the top, and right hands and left quite round with the 3d Cu



## London's Glory. PFD2.042



Each strain is to be play'd twice over.

The 1st Cu cross over below the 2d Cu and turn partners

Then cross over below the 3d Cu and half figure .l

Then cast up above the 3d Cu and half figure with the 2d Cu and cross over to the top :l

Then change places with contrary partners and go all four round  
and cast off and turn your partner .l

Then take your partner by both hands and draw her round the 3d Cu and above the 2d Cu  
and cast off below the 2d Cu and turn your partner :l

## Montague House. PFD2.043



Each strain twice.

The 1st Cu sett and cast off, and sett and cast up again;

Then cross over and figure in and go the single figure, and then turn your partner;

Then lead your partner through the 3d Cu; and cast up and turn out

## Wedding Supper. PFD2.044



Longways for as many as will.

The 1st and 2d Cu take hands and go round, then back again into your own places;

Then cross over and turn below the 2d Cu, and then figure of 8

Then right hands and left, so down to the bottom

## Lord! What's Come to my Mother. PFD2.045



Longways for as many as will.

Each strain is to be play'd twice over.

The 1st man turns the 2d Wo, then he and the 2d man leads through the 1st and 2d Wo and so come in their own places again .!

Then the 1st Wo begins and does the same :!

Then both cast off and clap twice, and cast up to the top then right and left round

Then cast off and double figure between the 3d Cu, and so turn it out.

## Belinda. PFD2.046



The tune must be play'd quite through.

1st man turn right hands with the 2d man, the 1st Wo with the 2d Wo at the same time

Then 1st Cu left hand into their own places,

1st man change places with the 2d Wo and 1st Wo with the 2d man;

Hands half round in your own places then 1st Cu sett and cast off .l

Then right and left once round with the upper Cu, and turn into 2d Cu place  
then the figure of 8 into the 2d Cu place

Then clap hands and turn S, then turn hands to the repeat of the tune.

## Draw Cupid Draw. . PFD2.047



The first strain twice over, and the last but once.

The 1st Cu go the whole figure of eight with the 2d Cu, and then cross over and turn .l

Then the other Cu do the same :l

Then cross over and back to back, then right and left quite round

## The Wedding Dance. PFD2.048



The 1st Cu lead through between the 2d Cu, and cast up again, then Arms .!

The 2d Cu do the same :!

Then back to back all with your partners, then right and left,  
the 1st Cu being in the 2d Cu place .!

Then the 1st Cu half figure, the 1st man and the 2d Wo, and the 2d man and the 1st Wo  
arms round, then 1st man and 1st Wo change places :!

## Jolly Roger. PFD2.049



The first strain to be play'd twice, and the last but once.

The 1st man sett to the 2d Wo. then jump round S. to the 2d man do the same with the 1st Wo .!

The 1st man change places with the 2d Wo and the 2d man do the same with the 1st Wo

Then hands all four half round, and right and left quite round, then foot it and jump :!

1st Cu cross over and go quite round, into the 2d Cu place, the man on the Wo side

Then 1st man arms round with the 2d Wo, and the 2d man do the same with the 1st Wo at the same time;  
then arms with your partners, then foot it all and jump.

## London Bridge. PFD2.050



Each strain Twice

The 1st man sids (sides?) to the 2d Wo, then sett and turn single .!

Then the 2d man sids to the 1st Wo, then sett and turn single :!

The 1st man change places with the 2d Wo  
and the second man change places with the 1st Wo

then change places each with their own partners .!

Then hands across all four quite round, and turn single :!

## Queens-borough, or. PFD2.051

Bloomsbury Market. PFD2.051



Each strain to be play'd twice over

The 1st man turns the 2d Wo with his right hand, and the 2d man with the left hand

then the 3d man with the right hand, and then cast up to his own place

Then his partner does the same :!

Then 1st man and Wo Hey with the 2d man, then lead down the middle and cast up, and turn .!

Then the 1st Cu Hey with the 2d Wo and cast off

and half figure at the top and turn your partner in the 2d Cu place

## Highland Lass, or. PFD2.052

Divonshire G(a)irl. PFD2.052



The 1st Cu cast off and figure at the top .|  
Then cast off and whole figure at bottom :|  
Then lead quite through the top and cast off in the 2d Cu place  
and right and left quite round with the 2d Cu .|  
Then cross over below the 3d Cu and half figure with the 3d Cu  
and lead up through the top and turn your partner

## The Quaker's Dance. PFD2.053

*Danc'd in the Play-House*

First all join hand in hand and face the presence, then all lead to the presence and back again.  
 Here the first two couples give right hands, and take left a whole round;  
 Next men and women facing each other, the first two couple nod heads at each other  
 and afterwards take hands, then all four go once round, and the first couple cast off below the second couple.  
 Then each friend standing opposite to his sister after he has repeated these two verses, he kisses her.  
 Then turning to the second woman, having repeated these verses kisses her also.

Friends each with sister, thus in order stand,  
 For sure the godly may join hand in hand;  
 In virtue's paths tread firm, as oaks do grow,  
 But from all sin, like crabs let's backward go.

Join not with those who ha'n't the light within,  
 Who are in darkness, and in deadly sin;  
 But with thy holy brethren join thy might,  
 Who have, like us, the sanctify'd light:

And Tho' we'll not clap hands, nor congies make,  
 Yet we'll nod heads, and hands we'll friendly shake;  
 Which done, thus joyn'd in love once round we'll go,  
 Next, ye walk up, and we'll cast off below.

But as this mirth doth much my spirit move,  
 So I to thee thus testify my love;  
 And least, O sister, though shoul'st take this ill,  
 The spirit bears to thee, the same good will.

## Tunbridge Minuet. PFD2.054



Each strain twice over

The 1st man turns the 2d Wo and comes into his place again .l

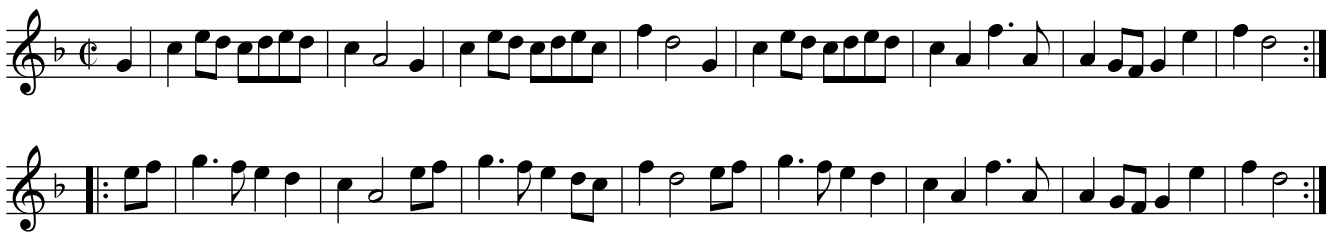
Then he turns his own partner, and comes into his own place again :l

Then all four hands quite round, and then right hands and left quite round .l

Then Hey on the men's side, and then on the Wo side :l

## Tw's o'er the Hills and Far away. PFD2.055

Over the Hills and Far Away, aka. PFD2.055



Each strain is to be play'd twice o'er

The 1st man and his partner cross over the 2d Cu and turn.

This to the first strain play'd once

Then cross over the 3d Cu and turn

This to the first strain play'd twice

Then lead up to the top and cast off, and then right hands and left quite round

This to the second strain play'd once

then lead through the 3d Cu, and cast up and turn your partner

This to the second strain play'd twice



## Barcelona. PFD2.056



The 1st man go back to back with the 2d Wo, and the 1st Wo go back to back with the 2d man  
the the 1st Cu cross over below the 2d Cu, and then go back to back  
with your own partners, then cast up and cross over into 2d Cu places  
then clap hands and turn your own partners.

## Royal Galliard. PFD2.057



The 1st and 2d men go the whole figure through the 1st and 2d Wo .!  
Then the 1st and 2d Wo do the same :!  
Then the 1st and 2d men fall back, and the We. fall back at the same time  
and go into each partners place, and fall back and go into their own places .!  
Then the 1st Cu cross over and half figure with the 2d Cu  
and lead through the 3d Cu, and both turn single :!

## Freeman's Yard. PFD2.058



Each Strain to be play'd twice over  
 The two men lead through the two We. and cast off and back to back and turn .!  
 Then the two we. do the same :!  
 The 1st man change places with the 2d Wo and 1st wo with th 2d man  
 and hands half round and cast off, then lead through the 3d Cu and cast up .!  
 Then right and left quite round with the 2d Cu :!

## Frank and Easie. PFD2.059



The first strain is to be play'd twice, and the last but once  
 First, right and left half round. Then the 1st man and 2d Wo lead  
 through the 2d Cu and cast off into their places .!  
 Then the 2d man and 2d Wo do the same :!  
 The 1st man and 1st Wo take both hands and slide down the middle and foot it  
 and then slip up the middle and foot it  
 Then cast off and go the whole figure with the 2d Cu.

## Ever Happy. PFD2.060



The first strain twice, and the last but once  
 The 1st man cross over and go back to back with the 2d Wo,  
 and the 1st Wo cross over and go back to back with the 2d man at the same time .!  
 Meet and turn single, then the 1st man turn the 2d Wo with his right hand  
 and the 1st Wo turn the 2d man with her right hand at the same time;  
 Then the 1st Cu take left hands and turn into their own places :!  
 The 1st Cu cross over into the 2d Cu place, and go back to back with their partners  
 Then all four lead up hands abreast, then go the figure through  
 and cast off into the 2d Cu place .!

## Manage the Miser. PFD2.061



Each strain is to be play'd twice over  
 The 1st man cast off, the 2d Wo cast up, then go the figure of eight through the other two  
 This to the first strain play'd once  
 The 2d man cast off, the 1st Wo cast up and go the figure as before  
 This to the first strain play'd twice  
 Then all four hands across and back again, then right and left  
 This to the second strain play'd once  
 Then lead through the 3d Cu and throught the 2d Cu, and turn your partner  
 This to the second strain play'd twice

## Tunbridge Beauties. PFD2.062



The 1st man sett to his own, then crosses over with the 2d Wo  
 Then the 1st man and 2d Wo sett, and cross over and change places;  
 Then the 1st and 2d men take hands, and lead between the 1st and 2d Wo  
 and come into their places again, then all four clap and take hands  
 and go half round into their own places again,  
 Then the 1st and 2d Wo take hands and lead between the 1st and 2d men into their own places again  
 Then all four clap and take hands, and go half round into their own places again  
 the rest doing the same.

## Double the Cape. PFD2.063



The first strain is to be play'd twice and the last but once  
 The 1st Cu cross over and the 2d Cu cast off  
 This to the first strain play'd once  
 Then change places across, and cast up into your own places  
 This to the first strain play'd twice  
 Then back to back, then right and left quite round  
 and cast off and turn

## Albion Queen. PFD2.064

Barksheir  
Berkshire, aka.



The 1st man cast off below the 2d man and go the Hey with the 2d man and 2d Wo  
till the 1st man comes into the 2d man's place .!|  
Then the 1st Wo cast off below the 2d Wo and do the like :|  
The 1st Cu being in the 2d Cu place, the two men lead to the wall  
and the two Wo do the same at the same time; then the 1st Cu lead up  
and the 2d Cu lead down at the same time  
Then right hands across all four half round and left hands back again  
till the 1st Cu comes into the 2d Cu place .!|  
Then the rest do the like :|

## Moderation. PFD2.065



The first strain is to be play'd twice, and the second once  
and so far as the repeat again.  
The 1st man cast off below the 2d man, and go above the 2d Wo into the 2d man's place,  
Then the 1st Wo cast off below the 2d Wo, and go above the 2d man into the 2d Wo place  
Then cast up, and go back to back with your partners, then right and left with your partner,  
Then lead through the 2d Cu ad back again, and so cast off.

## Confederacy. PFD2.066



The first strain twice, and the last once

The 1st Cu lead through the 2d Cu and cast up, then cast off and lead through the 3d Cu and cast up again, then the 1st man turn the 3d Wo, and the 1st Wo turn the 2d man then turn partners; then the whole figure of 8 at the top, and the whole figure of 8 at the bottom, which brings you into the 2d Cu place, then cross over and the Wo go between the top Cu, and the man at the bottom then sett and turn your partner.

## Venetian Ambassador. PFD2.067



The first strain to be play'd twice, and the last but once over

The 1st man and 2d Wo sett to each other, then the 1st man cast off and the 2d Wo cast up .l

The other Cu do the same :l

Then all four change places and hands half round, then cast off and lead through the 3d Cu, and cast up and clap twice with your partner, then lead through the 1st Cu and cast off

## New Anything. PFD2.068



Each strain to be play'd twice over  
The 1st ma and 2d Wo clap hands with each other and turn single  
then right and left half round  
This to the 1st strain play'd once  
The other Cus do the same  
This to the first strain play'd twice  
Then cross over and half figure  
This to the last strain play'd once  
Then lead through the bottom, and through the top, and cast off and turn  
This to the last strain play'd twice

## A Trip to Islington. PFD2.069



Each strain is to be play'd twice over

The 1st man cast off, and the wo go through the 2d Cu and cast up and cross over;

the 1st man going the half figure at the same time being in the 2d Cu place .!

The 1st Wo casts off going the half figure, the 1st man casts up and cross over

which brings them both into the 3d Cu place :!

Then they both cast up into the 2d Cu place, and setting, all 6 together, they Hey on both sides .!

Then lead through at the top, and through at the bottom and cast up and turn :!

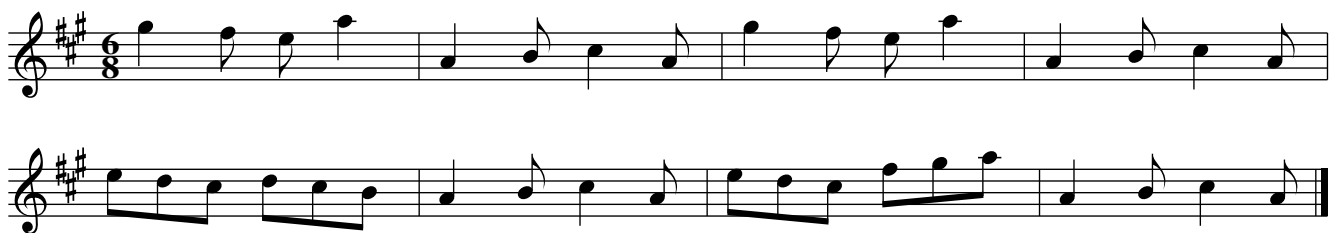


## Bleinheim Castle. PFD2.070



The first strain twice over, and the last but once  
 The 1st Cu sett to each other and cast off, then cast up and cross over into the 2d Cu place .!   
 The other Cu do the same :!  
 Then change places, the 1st man with the 2d Wo, and 1st Wo with the 2d man  
 then back to back each with his partner, and right and left quite round  
 and lead through the 3d Cu and cast up and turn .!

## Jigg it E Foot. PFD2.071



Longways for as many as will.  
 The tune to be play'd quite through.  
 The first man sett to his own partner, and then casts off.  
 This to the first strain of the tune.  
 And then right-hand and left quite round.  
 This to the second strain of the tune.  
 And so on to the end.

## The Union. PFD2.072



The first strain twice and the last but once  
 the 1st man sett to the 2d Wo and turn single, then back to back, and turn your own partner .l  
 The other two do the same :l  
 Then the 1st man change with the 2d Wo, and the 1st Wo with the 2d man  
 Then hands half round and cast off, then right hands and left quite round .l

## Prince George's Birthday. PFD2.073



Sett all four and turn single  
 Then 1st man and 2d wo change places and go half round .l  
 The other Cu do the same :l  
 Then the two men clap twice Sides, and once to their partners  
 and turn all four single, then right and left quite round .l  
 Then the 1st Cu being at the top, the man takes his partner and leads her down  
 between the 2d Cu, and back again, then cast off and lead through the 3d Cu, and cast up and turn :l

## The Devil in the Bush. PFD2.074

Sweetnor's Jigg, aka. PFD2.074



The 1st man cast off behind the 2d Cu and his partner follows him,  
 and back to back with her, which brings him into the Wos place .!

Then the Wo casts up back again and her partner follows her  
 and back to back with him, in their own places :!

The 1st Cu cross quite over into the 2d Cu place  
 then cast up again and cross over into the 2d Cu place .!

Then go the whole figure of 8 with the 2d Cu which will bring them into the 2d Cu place :!

Then turn right hands with your partner .!

Then left hands with her :!

Then Hey on the men's side and turn your partner .!

Then Hey on the Wos side and turn your partner :!

## Grigg's Maggot. PFD2.075



The first and last strain twice over each, and the 2d and 3d but once.  
 The 1st Cu cast off and lead through the 3d Cu and cast up,  
 Then cast off and lead up between the 3d Cu,  
 and go the whole figure of 8 with the 2d Cu  
 then the whole figure of 8 with the 3d Cu  
 then right and left quite round with the 2d Cu  
 and lead through the 3d Cu and cast up and turn

## Lord Cutts's March. PFD2.076



Each strain is to be play'd twice over  
 The 1st Cu cross over and lead through the 3d Cu  
 This to the first strain play'd once  
 Then cast up between the 2d and 3d Cu  
 This to the first strain play'd twice  
 Then cross over to the top and single right and left  
 This to the second strain play'd once  
 And then lead through the 3d Cu and cast up and turn  
 This to the second strain play'd twice

Vigo, or. PFD2.077  
St. Mary's Port. PFD2.077



Each strain is to be play'd twice over  
The 1st man turn the 2d Wo and then take his partner by the right hand  
and turn three in a ring, till they come to their places .l  
The first woman do the same :l  
Then the 1st Cu cross over and lead up to the top, and cast off .l  
Then lead through the bottom and cast up and turn :l

Humbey House. PFD2.078



Each strain is to be play'd twice over  
The 1st Cu go the whole figure of 8, the 2d Cu do the same .l  
Then the 1st Cu lead down and cast up and turn single  
the 2d Cu do the same :l  
Then the 1st man change with the 2d Wo, and the 1st Wo with the 2d man  
then sett all four in, and turn single, and right and left quite round .l  
Then the 1st Cu goes the half figure of 8, and the 2d Cu does the same,  
then right and left quite round :l

## Marlborough House. PFD2.079



The 1st man take the 2d Wo by both hands, and the 1st Wo take the 2d man by his hand,  
 Which makes them both improper, then 1st man turns and draws the 2 Wo into the top .!

The man being in his place, and his Wo improper, then 1st man takes his own partner by the hands  
 being in the 2d Wo place, and the 2d man takes his partner being at the top,  
 then turn and draw into their proper places as at first :!

Then 1st man change places with the 2d Wo, and 2d Wo with the 1st man (sic),  
 clap all four and turn S. then right and left quite round .!

Then 1st Cu lead through the bottom and cast up, and back to back with your own partner  
 and hands all four round with the 3d Cu. :!

## Lady Essex. PFD2.080



The first strain four times over and the last but twice

The 1st man turn the 2d Wo then take his partner by the right-hand, and the 2d Wo by the left, and turn three in a ring, the 1st Wo do the same; then 2d man turn the 1st by the right-hand, then take his partner by the left, and turn three in a ring, till they come into their own places; The 2d Wo do the same.

This to the first strain play'd four times

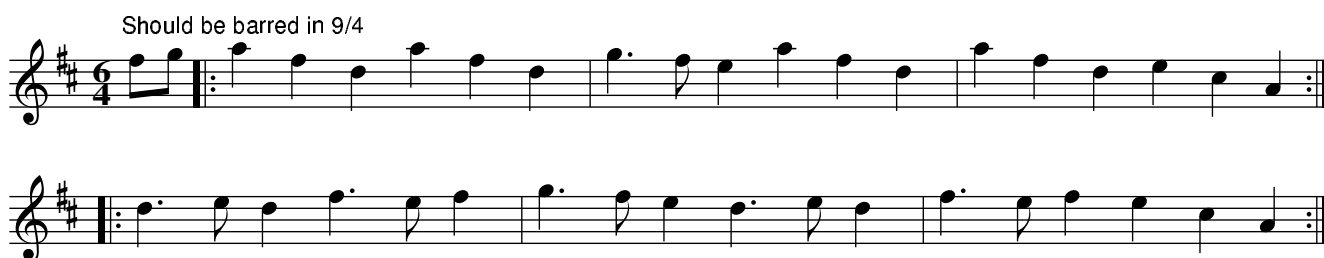
1st Cu cross over into the 2d Cu place, the Wo back again, the man keeps on, the Wo goes the figure of 8 which makes them meet crossways, then turn in the 2d Cu place, Then cross up to the top again, the 1st man cast off and goes the figure of 8 with his partner, which makes them meet cross then turn to the 2d Cu place.

## The Spanheim. PFD2.081



The 1st Cu sett and cast off bellow the 2d Cu .l  
 Then sett and cast off below the 3d Cu :l  
 Then lead up to the top and cast off .l  
 Then right and left half round :l  
 The 1st Cu clap and cast off .l  
 The 2d Cu do the same :l  
 Then the 1st man goes round the 3d Wo  
 and the 1st Wo goes round the 2d man at the same time .l  
 Then the 1st man goes round the 2d Wo and  
 the 1st Wo goes round the 2d man at the same time :l

## Scotch Union. PFD2.082



Each strain is to be play'd twice over  
 The 1st man turns single, then his Wo half round, his Wo does the same .l  
 Then cross over below the 2d Cu and foot it;  
 Then all four lead up and foot it  
 then 1st Wo cross over above the 2d Wo, and the 1st man above the 2d man, and so to the end.



## The Furlong. PFD2.083



The tune is to be play'd quite though twice.

The 1st Cu lead up and back again, then lead out and in again;

Then the 1st man and 2d Wo change places, and the 1st Wo and 2d man do the same and hands four all quite round, which brings the 1st Cu to the top;

Then the 1st Cu back to back at the top, then turn with their right hands half round and back again with their left, then cross over the 2d Cu, and lead through to the top and cast off, and clap all four, five times, then hands all four quite round.

## Reuben. PFD2.084



The first part

The 1st Cu cast off .l then cast up again :l then cross over .l and half figure :l

The second part

The 1st man turn the 2d Wo .l the 1st Wo do the same :l then hands round .l and cast off :l

The third part

The 1st Cu goes the whole figure of 8 :l then cross over .l and lead through the bottom :l

The fourth part

The 1st Cu cross over two Cu :l then lead up between the two Cu and cast off and turn :l

The fifth part

Then hands all four quite round and back again :l then right and left quite round :l

The sixth part

Then back to back with your partner .l then back to back sides :l then clap partners .l

Then clap hands sides and cast off :l

## May Day. PFD2.085



Each strain twice over.

The 1st Cu cast off, and right and left single

This to the first strain play'd once

The 2d Cu cast up, and single right and left

This to the 2d strain play'd twice

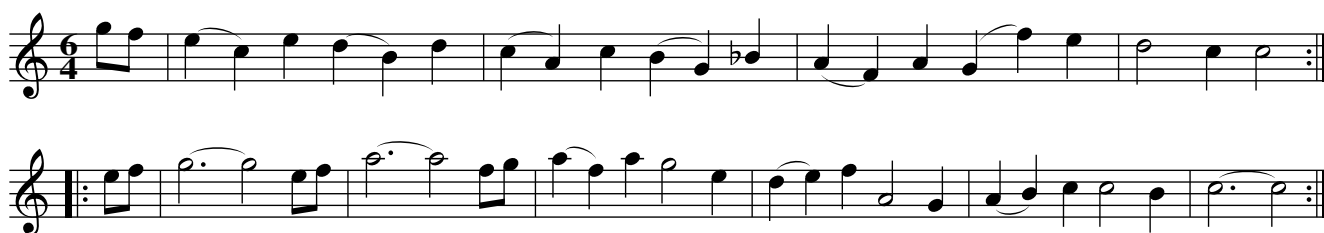
The 1st Cu clap and cast off, the 2d Cu do the same

This to the second strain play'd once

Then cross over and go single figure and turn

This to the second strain play'd twice

## Coppindger's Maggot. PFD2.086



Each strain is to be play'd twice over.

The 1st Cu sett and cast off, and sett and cast up .l

Then the 1sr Cu lead up, and the 2 men lead out and in again

the 2 Wo do the same at the same time :l

Then the 1sr Cu lead through the 2d Cu, and cast up and turn .l

Then the 1st man turn the 2d Wo, and the 1st Wo turn the 2d man,

and cross over and go the half figure of 8

and lead through the 3d Cu and cast up and turn :l

## Prince Eugene's March. PFD2.087



Each strain to be play'd twice over.

The 1st man clap twice with his partner, then both cast off and turn quite round .l

The other Cu do the same :l

The 1st man change places with the 2d Wo, and the 1st Wo with the 2d man;

Then hands all four half round, and cast off, and back to back;

The two men and the two Wo do the same at the same time .l

Then back to back each with his partner, then right and left quite round,

and lead through the 3d Cu, and cast up and turn your partner :l

## Mr.Hill's New Pafpey. PFD2.088



Each strain is to be play'd twice over.

The 1st man sett to the 2d Wo, and turn single,  
then turn her while she comes into her proper place .l

The 1st Wo do the same with the 2d man :l

Then the 1st Cu go the whole figure of 8 with the 2d Cu,  
and lead through the 2d Cu, and cast up to the top again .l

Then cross over, the 2d Cu lead up to the top, and sett and cast off :l

## New Czar. PFD2.089



The first strain twice over, and the last but once.

The 1st Cu leads down between the 2d Cu, then back again and cast off,  
and go round the 3d Cu on the inside

This to the first strain play'd once

Then the 1st Cu cast up; that again from the place where you was

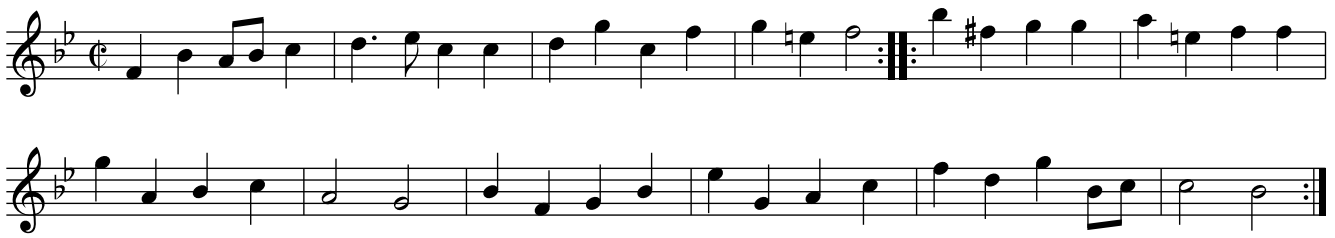
This to the first strain play'd twice

The 1st man cross with the 2d Wo, and the 1st Wo with the 2d man, then hands round;

Then the Hey on both sides

this to the second strain play'd once

## Kidlington Green. PFD2.090



Each strain is to be play'd twice over  
 The 1st Cu lead down the 2d Cu  
 This to the 1st strain play'd once  
 Then cast up and cast off, and sett each to his partner, and fall back  
 This to the second strain play'd twice  
 Then lead through the 3d Cu, and cast up and turn  
 This to the second strain play'd once  
 Then lead through the top, and cast off and turn  
 This to the 2d strain play'd twice

## Salutation. PFD2.091



Each strain is to be play'd twice over.  
 The 1st two men lead through the two Wo, then cast off, and back to back and turn .!|  
 The two Wo do they same :!  
 The 1st man change places ith the 2d Wo, and the 1st Wo with the 2d man,  
 and hands round and cast off; then lead through the 3d Cu and cast up .!  
 Then right and left quite round with the 2d Cu :!

## Horsly-down Field. PFD2.092



The tune to be play'd quite through.  
 The 1st Cu cross over the 2d Cu, and lead through to the top, and cast off .l  
 Then lead through the 3d Cu, and cast up and turn :l  
 Then single right and left, and turn each your partners quite round .l  
 then single right and left again, and turn each your partners quite round :l

## Woodstock Bower. PFD2.093



The 1st two men lead out and in again, the Wo do the same at the same time .l  
 Then the men back to back, and turn hands with each other,  
 the Wo do the same at thw same time :l  
 Then the 1st Cu cross over the 2d Cu, and lead through the 3d Cu,  
 and go back to back; then lead throught the top, and cast off and turn .l

## Morgan's Thought. PFD2.094



The 1st man sett to the 2d Wo, then he cast off and she cast up .!
 Then the 1st Wo sett to the 2d man, then she cast up and he cast off :!
 Then the 1st man change places with the 2d Wo, and the 1st Wo change places with the 2d man
 and go all four round, and cast off and lead throught the 3d Cu .!
 Then right and left with the 2d Cu quite round, and lead through the 2d Cu.
 and turn your partner :!

## Bump her Belly, or... PFD2.095

Maiden's Blush, The. PFD2.095



The 1st Cu sett and cast off between the 2d Cu
 This to the first strain play'd once
 Then sett and cast off below the 3d Cu
 This to the first strain play'd twice
 Then lead through to the top, and cast off,
 then right and left half round
 This to the second strain play'd once
 Then turn each his partner quite round, and then right and left half round
 This to the second strain play'd twice

## Monk's March, with the Wanders. PFD2.096



The 1st man figures round his partner, then round the 2d man, which brings him into his place;  
 The 2d Wo do the same at the same time .!|  
 Then the 1st Wo and the 2d man do the same as the others did :|  
 Then the 1st man and 2d man lead through the two Wo, and cast off and turn,  
 Then the 1st and 2d Wo do the same .!|  
 Then 1st man go back to back with 2d Wo .!|  
 The 1st Wo goes back to back with 2d man :|  
 Then the 1st man clap twice with his partner, the other Cu do the same at the same time :|  
 Then the two men, and the two Wo, clap twice both at the same time, turning each other;  
 the 1st man must observe in turning, to turn himself into the 2d Cu place,  
 but his Wo must turn to the top, then clapping with the contrary partner twice,  
 Then the two men clap twice, then take each his own partner and turn quite round :|

## Ramellies Rout. PFD2.097



The first man sett to the 2d Wo, and turn single, then back to back and turn .!|  
 Then the 1st Wo and the 2d man do the same :|  
 Then 1st Cu cross below the 2d, and so over below the 3d  
 and lead up quite through the top, and turn your partner .!|



## Belgia Retriev'd. PFD2.098



Honour to the presence, then to your own woman.  
Lead up all forward and back. That again.

----

The 1st man turns his own Wo once and a half, and goes into the 2d's place, and cross over;  
Then the 2d man and Wo being in the 1st Cu place do the same .l  
Then the 1st man and 2d Wo change places, and the 1st Wo and 2d man do the same :l  
Then hands all and go half round into your own places and turn single;  
then the 1st Wo and 2d man cross over, and the 1st man and 2d Wo do the same;  
then all take hands and go half round into their own place;  
then 1st Cu cast off into the 2d Cu place; and so on to the end.

## Vain Promise. PFD2.099



The 1st Cu cross over and figure round the 2d Cu,  
then cross over the 3d Cu and figure through  
This to the first strain play'd twice  
Then lead up above the 2d Cu, and cast off into the 2d Cu place  
then back to back and turn your partner  
This to the second strain play'd once

## Goodwin's Maggot. PFD2.100



The 1st Cu cross over the 2d and 3d Cu, and draw in and out with the 2d and 3d Cu,  
till you come to your own places .!|  
Then the 1st man change place with the 2d Wo, the 1st Wo do the same with the 2d man :!  
Then the 1st and 2d Cu take hands half round .!  
Then right and left quite round into the 2d Cu place :!

## Kill him with Kindness. PFD2.101



Longways for as many as will.

Note: The first strain is to be pla(y)'d twice, and the last but once.

The first and second Couple lead to the Wall, and turn their own Partners, till the Women come on the Men's side. This to the first Strain play'd once. Then lead to the Wall again and turn Proper. This to the first Strain play'd twice. Then all four Hands half round and turn single, and Right and Left quit(e) round, till the first Couple come into the second Couple's Place. This to the second Strain play'd once.

## Dutch Skipper. PFD2.102



Longways for as many as will.

Note: Each Strain is to be play'd twice over.

The first Couple cross over the second Couple and Figure through the third Couple .! Then cross over above the second Couple and Figure through :! Then being in your own Places turn your Partner twice round and Right and Left .! Then lead through the third Couple, cast up and turn; then lead through the second Couple, cast off and turn your Partner round into the second Couple's Place, then Figure through the third Couples and turn :!

## The Jigg to the Dutch Skipper. PFD2.103



Longways for as many as will.

Note: Each Strain is to be play'd twice over.

Then being in the second Couples Place, the first and second Couple Hands all four across quite round, and turn single .! Then Hands across all four back again, and turn single :! Then all four turn their Backs inward and go quite round, and turn single .! And Right and Left quite round, and turn your Partner :!

## We'll Wed and we'll Bed. PFD2.104



Longways for as many as will.

Note: The Tune to be play'd quite through.

The first Couple change Places, the first Man Sett to the 2d Woman, and the first Woman to the 2d Man, then turn Right-hands round; the first Man turns his own Woman with his Left-hand half round, and cast off Below the 2d Couple, then cross over above the 2d Couple and fall down between, Arms half round, back again all four on a Row, Face up the room, then fall back and lead forwards half a turn single, Face down the Room, fall back, lead forward half a turn single, Faces up, cast off, and so to the end.

## Frisk it Freely. PFD2.105



Longways for as many as will.

Note: The Tune to be play'd quite through.

The first Couple lead through the second Couple, and go withoutside below the third Couple, then lead up through the third Couple and cast up to their own Places. This to the first strain play'd once. Then the double Figure round the second Couple, and Right and Left till they come into the second Couple's Place. This to the second Strain play'd once.

## Pretty Poll. PFD2.106

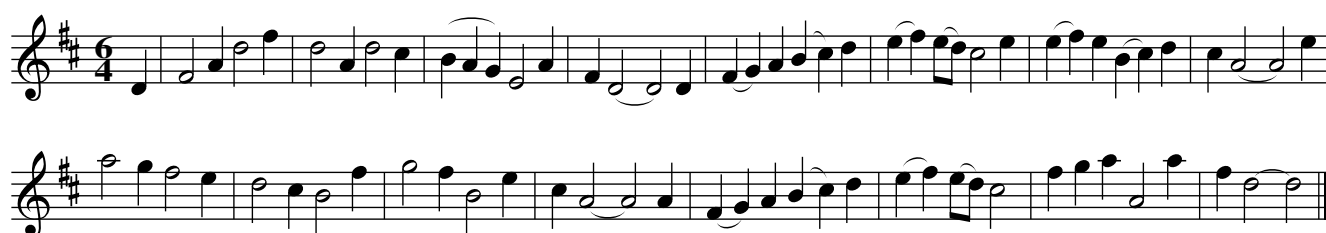


Longways for as many as will.

Note: The first Strain is to be play'd twice, and the second once, and so far as the Repeat again.

The first Couple cast off and turn Hands This to the first Strain play'd once. The second Couple do the same. This to the first Strain play'd twice. Then the first Couple clap Hands and cast of below the second Couple, then all four change Places, and Right and Left half round and cast off. This to the second Strain play'd once. Then clap Hands and turn single. This from Repeat.

## Queen Besse's Dame of Honour. PFD2.107

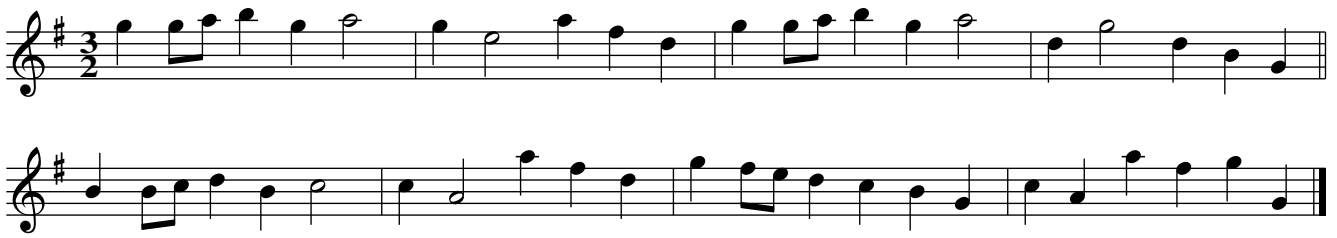


Longways for as many as will.

Note: The Tune is to be play'd quite through.

The first Man turn the 2d Woman, the first Woman the 2d Man; then cross over and cast up, and cross round into the 2d Couple's Place. The first and 2d Couple take Right-hands a-cross and go half round, then Left-hands and back again, then cast off, and Right and Left quite round. The first and 2d Couple take Hands and draw half round, then back again, and cross over and lead through the third Couple and turn.

## Young Sterphon. PFD2.108



Longways for as many as will.

Note: Each Strain is to be play'd twice over.

The first Couple cross over and turn Hands in the second Couples Place. This to the first Strain play'd once. Then cross over the third Couple and turn. This to the first Strain play'd twice. Then lead up thro' the third Couple and go withoutside of the second Couple, into their own Places. This to the second Strain play'd once. Then lead down thro' the second and third Couple, and turn in the second Couple's Place. This to the second Strain play'd twice.

## Mrs Savage's Whim. PFD2.109



Longways for as many as will.

Note: The first Strain twice over, and the last but once.

The first Man Sett to the second Woman, then turn the second Man, and go Back to Back with his own Partner. This to the first Strain play'd once. Then the second Woman do the same. This to the first Strain play'd twice. Then the first Couple cross over, and go Back to Back with your Partner then go the Figure above into the second Couple's Place. This to the second Strain play'd once.

## Audenard Battle, or.... PFD2.110

London Spy PlayfordVol2.110



Longways for as many as will.

Note: Each Strain is to be play'd twice over.

All four Hands a-cross quite round, the first Couple cast off and turn Hands .! Then all four Left-hands a-cross quite round, the first Couple cast up and turn Hands :! The first Man Back with the second Woman, then Back to Back with his Partner .! Then second Man Back with the first Woman, then Back to Back with his Partner, at the same Time with the Couple cast off :!

On Thus: The first Man leads off his Partner, then Women going the Figure of Eight round the third Couple, the Man doing the same with the second Couple, and meets his Partner between the first and second Men, then lead thro' the second Woman and turn in the middle, then lead thro' the second and third Men and turn as before.

## Dash the Drawer. PFD2.111



Longways for as many as will.

Note: Each Strain is to be play'd twice over.

The first and second Couple Right-hands a-cross half round .! Then Left-hands a-cross back again :! Then the first and second Couple draw Hands quite round into their own Places, then Right and Left half round .! Then the first Couple lead Hands thro' the third Couple, and turn in the second Couple's Place :!

## A Trip to Marrow–bone. PFD2.112

Four Bare Legs together, aka. PFD2.112



Longways for as many as will.

Note: Each Strain is to be play'd twice over.

The first Couple cast off, and lead thro' the third Couple .! And cast up at the Top and lead thro' the second Couple :! Then the first Couple cross over and half Figure at Top, and then the whole Figure with the third Couple .! Then Right and Left quite round with the second Couple, and lead thro' the third Couple, and turn your Partner in the second Couple's Place :!

## Orleans Baffled. PFD2.113



Longways for as many as will.

Note: The first Strain twice, and the last once.

The first Couple cast off and draw Hands below the third Couple, then cast up again and draw Hands above the second Couple, then the first Man change places with the second Woman, and the first Woman do the same with the second Man, then Right and Left till the first Couple comes into the second Couple's Place.



## The Volunteer. PFD2.114



Longways for as many as will.

The first Couple go the Figure thro' the second Couple, and then cross over above into the second Couple's Place, the other Couple do the like. This to the first Strain play'd twice. Then both Couple clap Hands with their Partners, then the first Couple cast off, and Right and Left with your Partners quite round; the second Couple being in the first Couple's Place, then clap Hands and cast off, and then Right and Left as before.

## In the Fields in Frost and Snow. PFD2.115



Longways for as many as will.

Note: The first Strain but once, and the last twice.

The first Couple Arms half round then cast off below the second Couple, the same again and cast up. This to the first Strain play'd once. Then all four lead inn to each other, and turn single and go half round, Men improper. This to the second Strain play'd once. The first Man and second Woman change Places, and the first Woman and second Man do the same, then the first Couple Sett and cast off, and so to the end. This to the second Strain play'd twice.

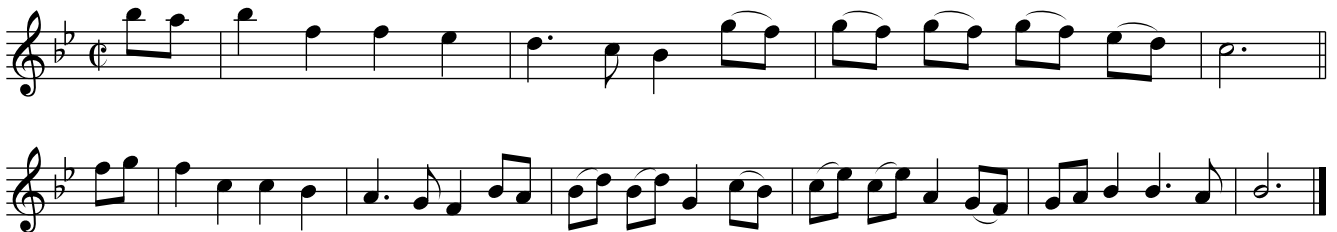
## Slater's Fancy. PFD2.116



Longways for as many as will.

The first Man cast off below the second Man, and the second Woman cast up above the first Woman, the first and second Couple do the same, then go the Figure of Eight which brings them into their own Places, then the first Couple cross over and Figure at the Bottom, and cast up and turn.

## Eccles's Maggot. PFD2.117



Longways for as many as will.

The first Couple cast off and lead up Hands all a-breast with the second Couple, then the single Figure round the second Couple, into the second Couple's Place and turn. The first Couple lead thro' the second and third Man, and turn in the middle, then the same thro' the second and third Women and turn as before.

## Jusper's Maggot. PFD2.118



Longways for as many as will.

Note: Each Strain is to be play'd twice over.

The first Couple cross over and turn .| Then lead thro the third Couple and cast up and turn .| Then Hands half round with the first Couple and turn single, and Right and Left half round .| Then Hands half round with the third Couple, and turn single, then Right and Left half round :|

## All alive. PFD2.119



Longways for as many as will.

Note: Each Strain is to be play'd twice over.

The first Couple Sett to each other, then cast off and go half Figure, then cast off again into the second Couple's Place, Improper .| Then the second Couple do the same :| Then all four cross over and give a Jump, then Face to Face, and Jump again, and Back to Back with your Partner, the first Man and second Woman meet, then take Right and Left Hands, the second Man and first Woman do the same .| Then go quite round Hands a-cross, which will bring the first Couple into the second Couple's Place :|

## Ducks and Drakes. PFD2.120



Longways for as many as will.

Note: Each Strain twice, and Repeat each time.

The two first Couple lead to the Wall and back again, then the first Cu. cast off and turn Hands .! Then lead to the Wall and back again, the first Couple cast up and turn Hands in their own Places :! The first Man cross over with the second Woman, and the second Man with the first Woman, the two Men lead thro' the two Women, then the two Women lead thro' the two Men .! The first Man cast up round the second Man into his Proper place, the second Woman casts off into hers at the same Time; then the second Man casts off into his Proper Place, the first Woman casts up into hers at the same Time, then the first Couple cast off and turn Hands :!

## Put in All. PFD2.121



Longways for as many as will.

Note: Each Strain is to be play'd twice over.

The first Man go to the second Woman, and take her by the Left-hand with his Right, and turn her into his Place, then cast off into hers .! The second Man do the like with the first Woman, and fall into her Place :! Then first Couple cast up and turn Hands till they are in their own Places, and the second Couple slip down thro' the third Couple at the same same Time and cast up, and turn Hands till they are in their own Places .! Then all four Right and Left quite round, and the first Couple cast off :!

## A Pint of Darby. PFD2.122



Longways for as many as will.

Note: Each Strain is to be play'd twice over.

The first Man take his Partner by the Left-hand and cast off, and lead her thro' the second Couple, then the second Woman, and fall into the second Couple's Place. This to the first Strain play'd once. Then the second Couple do the same. This to the first Strain play'd twice. Then the first Man and second Woman Sett and turn single, the second Man and first Woman turn Hands at the same Time, then the two Men and two Women Back to Back. This to the second Strain play'd once. Then all four lead down a-breast, then up again, then the first Couple cast off and Hands. This to the second Strain play'd twice.

## Holbourn Bars. PFD2.123



Longways for as many as will.

Note: The first Strain is to be play'd twice, and the last but once.

The two Men lead thro' the two Women, and turn single in their Places, and the two Women do the same .! Then the first Man change Place with the second Woman, and the first Woman change Place with the second Man, and then the Men change with their Partners into their own places :! Then the first Couple lead thro' the Top and thro' the Bottom, and Right and Left with the second Couple quite round and turn your Partner in the second Couple's Place .!

## Epsom New Wells. PFD2.124



Longways for as many as will.

Note: Each Strain is to be Play'd twice over.

The first Man turn the second Woman, and cast up round the second Man into his own Place, the second Woman casting off around the first Woman into her own place at the same Time .! The second Man and the first Woman do the same :! Then the first Couple lead thro' the third Couple, the second Couple following them all to their own Places .! Then lead to the Wall and back again, all four Foot it to their Partner; the first Couple cast off, and the second Couple turn up the middle :!

## North Brittain's. PFD2.125

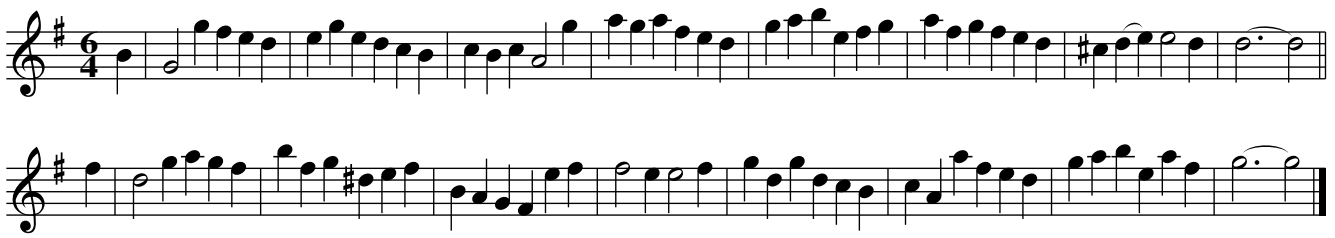


Longways for as many as will.

Note: Each Strain is to be play'd twice over:

The first Couple Sett and turn single, then cast off and Foot it .! The second Couple do the same :! The two Women and the second Man enclose the first Man, take Hands and Gallop round him, lead to the Wall and back again .! The two Men and second Woman go round the first Man, and lead to the Wall and back again :! The first Couple Foot it and cast off .! Then Men turn the Women round till in their own Places :!

## Merry be your Hearts. PFD2.126



Longways for as many as will.

Note: Each Strain twice over.

The first Couple cross over and Figure into the second Couple's Place and turn Hands .! The 2d. Couple do the same :! Then the first Couple lead thro' the second Couple, then all four fall back and forward, and each Man turn Hands with his Partner .! Then the second Couple lead thro', and the first Couple fall back and forward, the second Couple lead up, and the first Couple cast off :!

## Islington Wells. PFD2.127



Longways for as many as will.

Note: Each Strain is to be play'd twice over.

All four Hands half round, then lead to the Wall and back again, then all four Hands half round again, then lead to the Wall and back again; the first Man change Place with the second Woman, and the second Man with the first Woman, then change Places with your own Partners; The first Man draw his Partner into her proper Place, the second Man puts his Partner into her proper Place at the same Time .! The first Couple lead thro' the 2d Couple and cast up, the first Man clap his Hands, and the first Woman clap hers then clap Right and Left-hands; do this twice and cast off :!

## I mun be Married a Tuesday. PFD2.128



Longways for as many as will.

Note: Each Strain is to be play'd twice over.

First lead up all forward and backwards, then the first Couple Sett and turn Hands, and cast off.  
[This must be done by every Couple] Then the first Man and second Woman change Places, and the second Man and first Woman change Places, then Hands half round, and the first Couple cast off.

## Miss Hoyden. PFD2.129



Longways for as many as will.

Note: Each Strain twice over.

The first Couple meet, set their Hands to their sides, and Foot it, and turn Hands round .! Then the two Men and two Women do the same :! The first Couple cross over and turn Hands .! The second Couple do the same :! All four foot it, then take Hands and Gallop round .! Foot it again, then Right-hands and Left, till the first Couple are in the second Couple's Place :!



## Buckingham House. PFD2.130



Longways for as many as will.

Note: Each Strain is to be play'd twice over.

The first Man go the whole Figure on his side, and the Woman on her side at the same Time .l  
Then the first Couple cross over and Back to Back, then the Man on the Woman's side, and the  
Woman on the Man's side at the same Time :l Then cast up at Top and slip down into the second  
Couple's Place and fall back, sides, then the first Man lead thro' the Top and the Woman lead thro'  
the Bottom at the same Time .l Then the first Couple lead thro' the third Couple, and turn in  
the second Couple's Place :l

## Livingstone's Green. PFD2.131

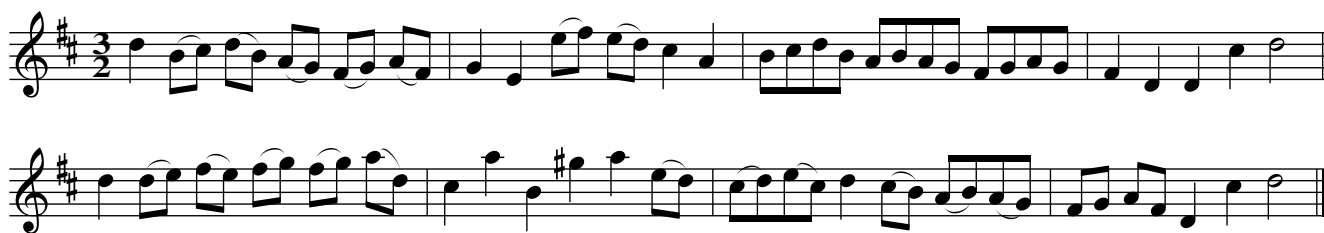


Longways for as many as will.

Note: Each Strain is to be play'd twice over.

The first Man cast off and turn his Partner with his Right-hand, and the second Woman with his  
Left, till he comes into his own Place. This to the first Strain play'd once. The first Woman cast off  
and do the same. This to the first Strain play'd twice. The first Couple cross over behind the second  
Couple and give a Jump and a Hop, then go into the second Couple's Place and give a Jump and a  
Hop. This to the second Strain play'd once. Sett and turn single, then turn your Partner, Sett and  
turn single again, then Men and Woman Back to Back, then turn your Partner. This to the second  
Strain play'd twice.

Kelston–House. PFD2.132  
New White Hart Hornpipe, aka. PFD2.132

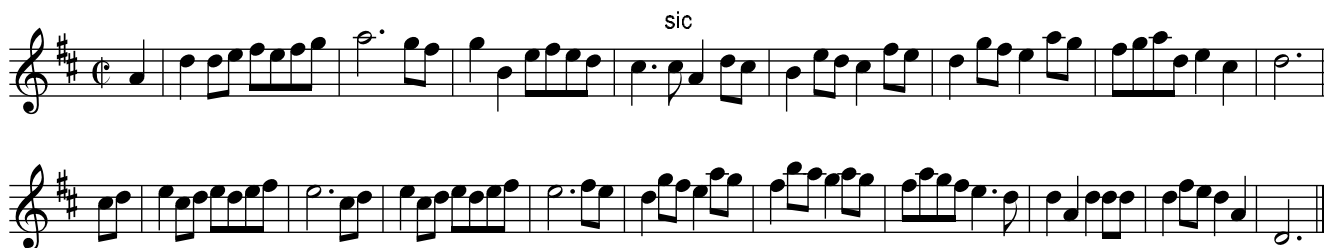


Longways for as many as will.

Note: Each Strain twice.

The first Man go between the two Women and round his Partner, and turn the second Woman till in their own Places. This to the first Strain play'd once. The first Woman go between the Men, and do the same. This to the second Strain play'd twice. Then all four Hands a-cross half round and back again. This to the second Strain play'd once. The first Couple Figure inn and cross over into the second Couple's Place. This to the second Strain play'd twice.

Churchill's March. PFD2.133



Longways for as many as will.

Note: Each Strain is to be play'd twice over.

The first Couple take Hands and go forward, let go, and go back from each other, then lead thro' the second Couple and cast up into their own Places :| The second Couple lead down, fall back, lead thro' the first Couple, and cast off into their own Place :| Then lead to the Wall and back again, then all four Hands a-cross quite round :| The first Man and second Woman change Places, then the second Man and first Woman change Places, then all four Hands half round, the first Couple cast off :|

## Well–House. PFD2.134



Longways for as many as will.

Note: Each Strain twice.

The two first Couple lead forward and backward all four a–breast, then the first Couple cross over, then turn your Partner round :| Then all four lead forward and backward again, and the second Couple do as the first did :| Then the two Men clap Hands with their Partners, then turn single and Foot it, the first Couple cast off, the second Couple turn Hands up at the same Time :| The first Couple being in the second Couple's Place, clap Hands with the third Couple, then turn single and Foot it; then lead thro' the third Couple and cast into the second Couple's Place :|

## About Ship. PFD2.135



Longways for as many as will.

Note: Each Strain twice over.

The first Couple cast off into the 2d Couple's Place, and give a little Jump, and the 2d Couple lead up and give a Jump at the same Time :| The 2d Couple cast off, and the first Couple lead up as before :| Then the 2d Couple cast up, and Jump, and the first lead down, the first Couple cast up, and the 2d lead down :| The first Man and 2d Woman change Places, and the 2d Man and first Woman change Places, then Hands half round, and the first Couple cast off :|

## The Tub. PFD2.136



Longways for as many as will.

Note: Each Strain twice.

The two first Couple lead to the Wall and back again, the first Couple cast off, the second Couple turn Hands up at the same Time .! Lead to the Wall as before, the second Couple cast off, the first Couple turn Hands up :! The first Man and second Woman chang(e) Places then the second Man and first Woman change, the 2d Man strike his Left-hand into the first Man's Right, and so strike round one after another, Sett and turn single .! All four cross over, the first Couple cast up into their own Places, strike Hands as before, then all four Sett, the first Couple cast off :!

## Nymph Divine. PFD2.137



Longways for as many as will.

Note: The first Strain twice, and the last but once.

The two first Cu. lead to the Wall and back again, the two Men lead thro' the two We. then the two We. thro' the two Men .! The first and 2d Cu. fall back from each other, and forward again, the first Cu. lead thro' the 2d Cu. and cast up, then the 2d Cu. thro' the first and cast off :! The 1st Man cast off and stand behind the 2d Man, the 1st Wo. do the same; the 2d Cu. Sett and cast up, the 1st Cu. go the whole Figure, which will bring 'em into the 2d Cu. Place .!

## Boys and Girls to Play. PFD2.138



Longways for as many as will.

Note: The first Strain twice over, and the last but once.

The two first Couple becken to each other, and then turn single. This to the first Strain play'd once. Then all four lead forward and back again. This to the first Strain play'd twice. Then the first Couple cast off and turn Hands, then cast up again and turn Hands, then go the whole Figure and cast off. This to the second Strain play'd once.

## Billingsgate. PFD2.139



Longways for as many as will.

Note: The first Strain twice, and the second but once, and Repeat.

The 1st Cu. Gallop down beyond the 3d Cu. and turn single, then Gallop up again, and turn single. Then the 1st Cu. clap Hands twice five Times, and Back to Back; then the 2d Cu. do the same. The two Man and two Wo. Gallop to the Wall and back again, the 1st Man and 1st Wo. change Places, the Man cast off, the Wo. following him clapping her Hands twice five Times; the they cast up again he following her clapping Hands, and turn single and cast off, then turn Hand half round.

## Sturbitch Fair. PFD2.140



Longways for as many as will.

Note: The first Strain is to be play'd twice, and the last but once.

First Cu. cross over and Figure thro' the 3rd Cu. then cast up and Figure thro' the 2d Cu. and cast off .| The 2d Cu. do the same :| The 1st Man and 1st Wo. cross into their own Places, then the 2d Man and 2d Wo. cross into their own Places, then Back to Back with your own, then Right and Left quite round, and the 1st Cu. cast off .|

## Evan's Jigg. PFD2.141



Longways for as many as will.

Note: Each Strain is to be play'd twice.

The first Man and second Woman Sett and turn single, then the first Couple cast off. to the first strain play'd once. The second Man and first Woman Sett and turn single, then the second Couple cast off. This to the first Strain play'd twice.

The two first Couple Back to Back with their Partners, then the Men go Back to Back, and the Women Back to Back. This to the second Strain play'd once.

Then the first Couple go the whole Figure of Eight, thro' the second Couple and cast off quickly. This to the second Strain play's twice.

## A Trip o'er Tweed. PFD2.142



Longways for as many as will.

Note: Each Strain is to be play'd twice over.

The first Couple cast off and fall in between the second and third Woman and Man, and lead Backward and Forward .! Then first Woman cast off and fall in between the third Man and third Woman, the Man cast up and fall in between the second Man and second Woman at the same Time; then lead backward and forward :! The first Man and first Woman meet and fall back, the Man cast off around the second Woman, and the second Woman cast off round the third Man, then Righ and Lift quite round .! Back to Back with your own, then Back with the second couple, then the Man lead his Partner up round the second Woman into their proper Places, Sett and cast off :!

## The Way of the World. PFD2.143



Longways for as many as will.

Note: Each Strain is to be play'd twice over.

The first Man cast off and turn the third Woman by the Left-hand, and fall into the second Man's Place. This to the first Strain play'd once.

The first Woman cast off and turn the third Man, and fall into the second Woman's Place. This to the first Strain play'd twice.

Then the first Couple lead thro' the third Couple, cast up and turn Hands.

This to the second Strain play'd once. Then lead thro' the second Couple and cast off, and turn Hands. This to the second Strain play'd twice.

## Stepney Cakes and Ale. PFD2.144

Kissed Her Under the Coverlet, aka. PFD2.144

Bunter's Delight, The, aka. PFD2.144



Longways for as many as will.

Note: Each Strain is to be play'd twice over.

The first Couple Sett and cast off and cast up again .!

The second Couple do the same :! The the first Couple cross over and half Figure, and lead thro' the third Couple and cast up l. Then the first Couple cast up, then the second Couple cast up, and the first Couple cast up again, and Right and Left and turn your Partner l:



## Patt's Maggot. PFD2.145



Longways for as many as will.

Note: The Tune is to be play'd quite through, and Repeat

The first Couple lead up, and the second Couple lead down at the same time .l

Then the Men lead out and in, the Women do the same at the same Time,

and turn all four single l: Then Hands all four quite round and cast off,

then Right and Left quite round.

## Irish Round. PFD2.146

Kinington–Wells. PFD2.146



Longways for as many as will.

Note: The first Strain twice over, and the last but once.

The 1st Cu. cast off and Hands round with the 3rd Cu. and turn his Partner in the 2nd Cu. Place .l

The the 2d Cu. does the same :l

Then 1st Man change Place, with the 2nd Wo. and the 1st Wo. change Place with the 2d Man  
and go quite round and cast off, then Right and Left quite round and turn your Partner.

## The Ladies last Stake. PFD2.147



Longways for as many as will.

Note: Each Strain is to be play'd twice over.

The two 1st Cu. lead to the Wall and back again quickly, the 1st Cu. cast off and the 2d Cu. cast off with 'em and stand behind the 1st Cu. .l

Then the 1st Cu. lead thro' the 3d Cu. into their own Places and turn Hands :l

The 1st Man change Place with the 2d. Wo. and the 2d Man with the 1st Wo.

the 1st Cu. slip up, and the 2d Cu. slip down, then cross into their own Places l.

The 1st Man cast off and his Partner follow him, he in the 2d Wo.'s Place,

and she in in the 2d Man's Place, then do the half Figure

and it will bring the 1st Cu. into the 2d Cu. Places l:

## Wou'd you have a young Virgin. PFD2.148

Poor Robin's Maggot. PFD2.148



Longways for as many as will.

Note: Each Strain is to be play'd twice.

The 1st Man and 2d Wo. meet and give a Jump, the 2d Man and 1st Wo. do the same, then all four take Hands and go round .| All four lead forward and back again, the 1st Cu. cross over and turn Hands :| The 1st Cu. slide up behind the 2d. Cu. and stop, then slide into their own Places, meet and Kiss, then cast off |. The 2nd Cu. slide down and stop, then slide and Kiss, as the 1st Cu. did, and cast up |:

Or thus: The 1st Cu. cast off \*dehind the 2d Cu. and lead thro' the 3rd Cu. and cast up and turn .| The 2d Cu. do the same :| The 1st Man change with the 2d Wo. and the 2d Man with the 1st Wo .| Then go half round and cast off, and Right and Left quite round |:

## Drive the Monsieur from Flanders. PFD2.149



Longways for us many as will.

Note: Each strain must be play'd twice, and the Minuet Part must be done with the Minuet Step.

The 1st Man draw his Partner into the 2d Cu. Place, and the 2d Man put his partner into the 1st Cu. place. | The 1st man draw his partner into the 3d Cu. place, and the 3d Man put his partnet into the 2d Cu. place :| The 1st Cu being in the 1st Cu. place cast off, and the 3d Cu. being in the 2d Cu. place cast off at the same time; the 1st Cu. turn Hands up the middle into their own Places. | The 1st Cu. go the half Figure and cross over |. The 1st Man leads his Partner the Minuet Step behind the 2d Man into the 2d Cu. Place. | Turn her once round and cast up |: Lead up all four abroadst, the 2d Cu. cast off round the first Cu. into their own Places, the first Cu. Sett and cast off |:

## Bunter's delight, or...,The. PFD2.150

Stepney Cakes and Ale. PFD2.150

Kiss'd her under the Coverlet, aka. PFD2.150



Longways for as many as will.

Note: Each Strain twice.

The 1st Man cast off and his Partner follow him, then Back to Back .l

The Wo. cast up and the Man follow, then Back to Back again l:

The two We. and two Men Back to Back, and turn Hands till the 1st Cu. is in the 2d Cu. Place .l

Then Back to Back with your own Partners and turn Hands till the Men are one the We. side l:

All four fall in a row, turn single, then fall in their own Places and turn single .l

The 1st Cu. being in the 2d Cu. Place, lead thro the 3d Cu then cast up in the 2d Place and turn Hands l:

Or thus:

The first Couple Sett and cast off and cast up again; the second Couple do the same .l

Then cross over and half Figure and lead thro' the third Couple and cast up l:

Then cast up the first Couple, then the first Couple cast up the second Couple, then Right and Left l:

## The Pursuit. PFD2.151



Longways for as many as will.

Note: Each Strain is to be play'd twice over.

The first Man go the Hey with the two first Woman, and cast off into the second Man's Place.

This to the first Strain play'd once. The first Woman go the Hey with the two first Men,

and cast off into the second Woman's Place. W: This to the first Strain play'd twice.

The first Couple lead thro' the third Couple, and cast up into the second Couple's Place, and turn Hands.

This to the second Strain play'd once. Then do the whole Figure thro' the second Couple

which will bring the first Couple into the second Couple's Places. This to the second Strain play'd twice.

## Golden Grove. PFD2.152



Longways for as many as will.

Note: Each Strain is to be play'd twice over.

The first Couple cast off, then the first Man turn the third Woman, and the first Woman the second Man, then the first Couple turn Hands into the second Couple's Place.

This is to the first Strain play'd once. The second Couple do the same. This to the first Strain play'd twice. The first Man and second Woman, and the second Man and first Woman, Sett to each other and turn single, fall all four in a Row, then go to your Places again.

This is to the second Strain play'd once. The first Couple cast off at the same Time, the second Couple turn Hands up the middle, then the Men turn their Partners.

This to the second Strain play'd twice.

## Kit Cat Club. PFD2.153



Longways for as many as will.

Note: The first Strain is to be play'd once, and the last twice.

The 1st Cu. cast off, and Hands quite round with the 3d Cu. and lead thro' the 3d Cu.!

And Hands round with the 2d Cu. and lead thro' the 2d Cu.!: Then the 2d Cu. cross over and turn, and the 1st Cu. cross over and turn, and the 2d Cu. cast off.!

Then the first Cu cross over and half Figure with the 2d Cu. and Right and Left quite round with the 2d Cu. and lead thro' the 3d Cu. and turn your Partner.!

## Lady Mary's Courant. PFD2.154



Longways for as many as will.

Note: Each Strain twice.

The 1st Cu. cast off, the man fall between the 2d Cu. and the Wo. between the 3d Cu. each three take Hands round.!

The Man cast off and fall between the 2d and 3d We. the Wo. cast up at the same Time and fall between the 2d and 3d Men, then each three take Hands round.!: The first Man lead his Partner the half Figure thro' the 2d Cu. and fall into the 2d Cu. Place, then turn Hands once round and cast up.!

The 1st Man lead the two first We. round the 2d Man, into their own Places again, then 1st Man turn single and cast off.!

## May Fair. PFD2.155

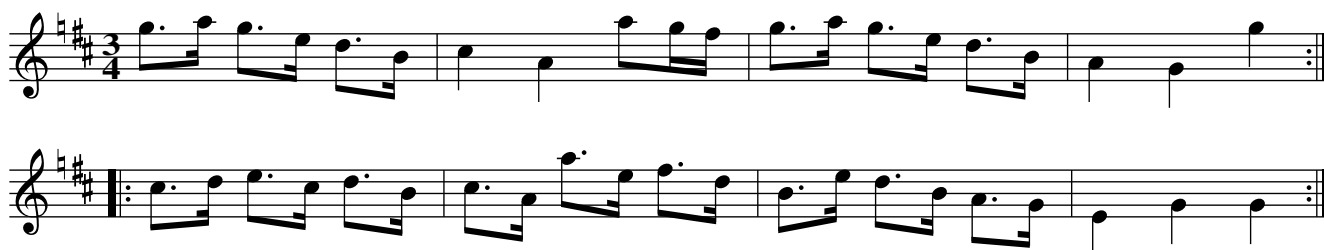


Longways for as many as will.

Note: This Tune to be play'd quite through.

The two first men each with their Partners, then Side each on the other side, then the first Couple Gallop thro' the third Couple, and cast up into the second Couple's Place, then lead thro' the second Couple and cast off.

## Scotch Moggy. PFD2.156



Longways for as many as will.

Note: Each Strain twice over.

Lead up forward and back again. This is to the first Strain play'd once.

Then the first Couple cast off and turn Hands. This is to the first Strain play'd twice.

Then the two first Couple lead to the Wall and back again. This to the second Strain play'd once.

The first Couple being in the second Couple's Place, lead the third Couple to the Wall and back again, then turn Hands with the third Couple. This to the second Strain play'd twice.



## Barn Elms. PFD2.157



Longways for as many as will.

Note: Each Strain is to be play'd twice over.

The first and second Couple go Hands half round, the first Couple being in the 2d Couple's Place, Improper, cast up. This is to the first Strain play'd once. Then go Hands half round again, the first Couple being in the second Couple's Place Proper, cast up into their own.

This is to the first Strain play'd twice. The two Men do the whole Figure thro' the two Women, then Right and Left quite round. This to the second Strain play'd once. Then the two Women go the Figure thro' the two Men, and lead to the Wall, then back again, the first Couple cast off. This to the second Strain twice.

## The Sword Dance, or... . PFD2.158

Strum. PFD2.158



Longways for as many as will.

Note: Each Strain is to be play'd twice over.

The first Man cast off, and the second Woman cast up, and turn Hands into their own Places .|

The second Man and first Woman do the same :| All four Hands a-cross half round and back again quickly .| The first Couple Figure in and cross over !:

Or thus: The first Couple clap Hands and cast off .| Then clap Hands and cast up !:

Then change Places and Hands half round, and cast off again .|

Then Right and Left quite round !:

## Jack The French–man. PFD2.159



Longways\* for as many as will.

Note: The Tune is to be play'd quite through.

The first Couple lead thro' the second Couple, and cast off into their own Places,  
the first Man turn the second man's Partner, the second Couple does the same,  
then the first Man and the second Woman ges the Figure of Eight thro' their Partners,  
the second Man and first Woman do the same, and cast off.

## The Elector of Hanover's March. PFD2.160



Longways for as many as will

Note: The first Strain twice over, and the last but once.

The two first Couple lead to the Wall, and back again .!

The first Couple lead up, and the 2d Couple down and back again !:

The first Man go under the second Couple's Hands, the first Woman  
do the same, change Places, Foot it, and cast up, all four Hands half round  
(at the long notes) men and Women cross over and slip into their own Places,  
then turn hands, and the first Couple cast off .!

## Camberwell. PFD2.161



Longways for as many as will

Note: Each Strain is to be play'd twice over.

The first Couple Foot it to each other and cast off, then turn Hands up and cast up into their own Places. This to the first Strain play'd once. The two first Couple Sett to each other, and turn single, then the second Couple go the whole Figure thro' the first Couple. This to the first Strain play'd twice.

The first Man turn the second Woman with his Right-Hand and his Partner with his Left, then Right and Left quite round. This to the second Strain play'd once.

The second man turn the first Woman with his Right-hand, and his Partner with his Left, then Back to Back with your Partners, and the first Couple cast off.

This to the second Strain play'd twice.

## Every Lad his Lass. PFD2.162



Longways for as many as will

Note: Each Strain is to be play'd twice over.

The first Couple Sett and cast off. This to the first Strain play'd once.

The second Couple do the same. This to the first Strain play'd twice.

The first Man and second Woman meet and give a little Jump, the second Man and first Woman do the same, and turn single all four. This to the second

Strain play'd once. The first Couple cross over and Figure in between the third Couple into the second Couple's Place. This to the second Strain play'd twice.

## The Health. PFD2.163



Longways for as many as will

Note: Each Strain is to be play'd twice over.

The first and second Couple lead forward and back, and turn single, then turn up your partners, then the first Couple cast off. This to the first Strain play'd once.

The second Couple lead up and do the same. This to the first Strain play'd twice.

Hands a-cross round, then back again, and turn single, This to the second Strain play'd once.

Then the first Couple Figure in, then cast off and turn Hands.

This to the second Strain play'd twice.

## Justice Busie. PFD2.164



Longways for as many as will

Note: Each Strain is to be play'd twice over.

The first Couple lead forward and back again, and cast off. This to the first Strain play'd once. The two Men and two Women lead to the Wall and back again, then Back to Back.

This to the first Strain play'd twice. the first Couple go the whole Figure thro' the third Couple. This to the second Strain play'd once. Then Right and Left quite round with the second Couple. This to the second Strain play'd twice.

## New Minuet. PFD2.165



Longways for as many as will

Note: Each Strain is to be play'd twice over.

[Note: This Dance must be done with the Minuet Step\*.]

The two first Men take Hands, and the two first Women, and lead backward, then first Couple cast off, and the second Couple lead up. This to the first Strain play'd once. The first and 2d Couple take Hands and meet each other, the second Couple cast off, and the first Couple lead up. This to the first Strain play'd twice. The first Couple cross over and turn hands. This to the second Strain play'd once. Then lead up all a-breast, and the first Couple cast off. This to the second Strain play'd twice.

## Love's Triumph. PFD2.166



Longways for as many as will

Note: Each Strain is to be play'd twice over.

All four meet and turn single, then Hands half round .! The first Couple meet the third Couple and turn single, then Hands half round !: The first Couple being in the third Couple's Place cast up into the second Couple's Place, then Back to Back with your Partner; then turn single, and Right and Left quite round with the second Couple .! The first Couple being in the second Couple's Place, the first Man turn the third Woman, and the first Woman the second Man, then the first Man turn the third Man, and the first Woman turn the second Woman, then Back to Back with your Partners, then lead thro' the second Couple and cast off, and lead thro' the third Couple and cast up !:

## Merlborough's Victory. PFD2.167

Marlborough's Victory, aka. PFD2.167



Longways for as many as will

Note: The first Strain is to be play'd twice, and the last but once.

The first Couple lead up and down, then Sett all four and turn single, and Hands quite round .| The first and second Couple lead out and in again, then Right and Left quite round |: Then Hey on the Men's side, then on the Women's side, and turn into the second Couple's Places.



## Vendosme's Retreat. PFD2.168



Longways for as many as will

Note: Each Strain is to be play'd twice over.

The first Man cast off behind the second Man and turn his own Partner, and cast up into his own place again. This to the first Strain play'd once.

The first Woman do the same. This to the first Strain play'd twice.

Then go the whole Figure of Eight with the second Couple.

This to the second Strain play'd once.

Then being at the Top, clap Hands with your Partner, and cast off and turn her.

This to the second Strain play'd twice.

## The Beaux Stratagem. PFD2.169



Longways for as many as will

Note: Each Strain is to be play'd twice over.

The first Couple slip without side, below the second Couple. This to the first Strain play'd once.

Then Figure thro' the third Couple, the second Couple do the same. This to the first Strain play'd twice. Fall back, Sides, and change Places with your Partners.

This to the second Strain play'd once.

The first Couple Figure thro' the second Couple, and turn down the middle into the second Couple's Place. This to the second Strain play'd twice.

## Count Lean. PFD2.170



Longways for as many as will

Note: Each Strain is to be play'd twice.

The 1st Man cross over below the 2d Wo. the 1st Wo. at the same Time Figure thro' the 2d Cu. then both Sett, the 1st Man cast up, and the 2d Wo. at the same Time cast off, and turn Partners in the second Cu's Place. ! The 2d Cu. do the same !: The 1st Cu. cast off, the 1st Man Figure thro' the 3d Cu. the 1st Wo. goes the Figure thro' the 3d Cu. at the same Time: Sett and change Places. ! The 1st Man go the Hey with the 2d Cu. the 1st wo. do the same with the 3d Cu. then lead up to the Top and cast off !:

## Exeter Ladies. PFD2.171



Longways for as many as will

Note: Each Strain twice over.

The first and second Couple take Hands and go half round, and turn single, then back again. This to the first Strain play'd once. The first Couple go the Hey, then Sides with the second and third Couple. This to the first Strain play'd twice. Then the first Couple cast off and turn the third Couple. This to the second Strain play'd once. The first Couple Sett in the second Couple's Place, and turn single; then the first man turn the second Man with his Left-hand quite round; the first Woman turn the second Woman with the Right-hand at the same time. This to the second Strain play'd twice.

## Dutchess of Grafton. PFD2.172



Longways for as many as will

Note: Each Strain is to be play'd twice over.

The first Man Sett to the second Woman, then cast off, and turn the third Woman with his Left-hand quite round, the second Woman at the same Time cast up, and turn the second Man half round .! The first Woman and second man Sett and cast off, and lead thro' the third Couple and cast up !: The first man takes the second Man by both Hands and pulls him into the second Woman's Place, loose Hands, Sett two steps forward and backward, then take Hands and turn half round, the second Woman at the same Time cast off, and turn the first Woman half round .! The Right and Left, the first Couple meet two steps forward, clap Hands and cast off !:

Fort Mountjoy. PFD2.173  
 Saturday Night's Ramble. PFD2.173



Longways for as many as will

Note: Each Strain is to be play'd twice over.

The 1st Cu. cross over below the 2d Cu. the 1st man turn the 2d Man half round, and cast off, the 1st Wo. at the same Time turn the 3d Wo. half round, and cast up .| Then cross up and Figure thro' the 2d Cu. |: The 1st Man change Place with the 2d Wo. the 1st Wo. and 2d Man the same, all four clap Hands and turn single .| Then Right and Left half round, clap Hands and cast off |:

Or thus: The 1st Cu. cast off behind the 2d Cu. then cast off behind the 3d Cu. .|

Then cast up again the same, till they come to the Top |: then the 1st Man change places with the 2d Wo. and the 2d Man with the 1st Wo. and half round and cast off, then Right and Left quite round, which brings them into the 2d Cu. Place .| Then lead thro' at Bottom and cast up, and lead thro' at Top and cast off, and turn |:

## Lord Kilmurry's Delight. PFD2.174



Longways for as many as will.

Note: The first Strain twice, and the last but once.

The 1st Cu. Figure thro' the 2d Cu. Sett and cast off, then Figure thro' the 3d Cu. and turn in the 2d Cu. Place .l The 2d Cu. do the same l: The 1st and 2d Men Sett to their Partners and change Places, the 1st Man turn the 2d Man with Left-hand quite round, the 1st and 2d Wo. do the same at the same Time, then Right and Left half round, and the 2d Cu. cast off, then the 1st Cu. Sett and cast off .l

## Recruiting Officer. PFD2.175

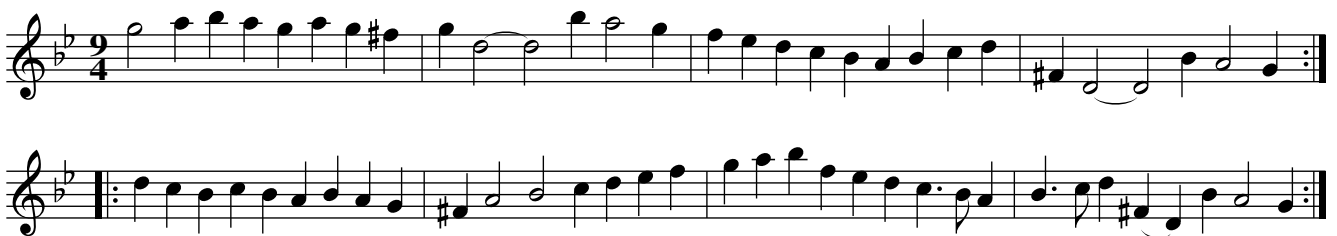


Longways for as many as will.

Note: Each Strain is to be play'd twice.

The first Man cast off and turn the second Woman quite round, the first Woman at the same Time follows him below the second Man, and turn him quite round. This to the first Strain play'd once. Then Figure thro' the third Couple and cast up to the Top. This to the first Strain play'd twice. The first Couple cast off and take Hands with the third Couple and go half round. This to the second Strain play'd once. All Sett and turn single, then hands back again, which brings the first Couple into the second Couple's Place, Proper. This to the second Strain play'd twice.

## A Trip to Nottingham. PFD2.176



Longways for as many as will.

Note: Each Strain is to be play'd twice over.

All four Hands half round, the first Couple turn Sides with the third Couple. This to the first Strain play'd once. Then cast to the Top and change Places with your Partners. This to the first Strain play'd twice. The first Couple go in and out below the third Couple. This to the second Strain play'd once. Then lead up to the Top and cast off. This to the second Strain play'd twice.

## Union Jigg. PFD2.177



Longways for as many as will.

Note: The first Strain twice, and the last but once.

The first Man sett to the second Woman, and turn single down the middle,  
then turn the third Woman quite round, the second Woman at the same time  
cast up, and cross below the second Man .! The first Woman and second Man  
cast off and take Hands half round with the first Man and second Woman :!  
The first Couple go the Figure thro' the third Couple, the first man change Place  
with the second Woman, the first Woman change with the second Man, then  
the first Couple cross over below the second Couple, the second Couple  
turn up into their own Places at the same Time .!

## Burgundy Flight. PFD2.178



Longways for as many as will.

Note: Each Strain is to be play'd twice over.

The first Couple cast off and turn the third Couple. This is to the first Strain play'd once. The 2d Couple do the same. This is to the first Strain play'd twice. All four change Places, then Sett to your Partners, then Sett Sides and turn quite round. This is to the second Strain play'd once. Then Right and Left, Sett Sides the first Couple slip up the middle, Sett two Steps and cast off. This is to the second Strain play'd twice.



## Lisle. PFD2.179



Longways for as many as will.

Note: Each Strain is to be play'd twice over.

The first Man cast off, and goes without side the third Woman below her, the first Woman at the same Time follows her Partner below the second Man, and cast up, her Partner follows her, then both go into their Places l.

The first Wo. do the same, and her Partner follows her as before l:

The first Couple go down the middle, Sett a-cross with the third Couple and turn single, then cross above the second Couple, and go into each other's Place l. The first Couple cast off, and clap Hands once, then the first Man go round the second Woman, the first Woman at the same Time goes round the third Man, both meet in the second Couple's Place, and turn Partners l:

## George's Maggot. PFD2.180



Longways for as many as will.

Note: The first Strain is to be play'd twice, and the last but once.

The first Couple lead between the second Couple and turn, Improper, then Figure thro' the third Couple .! The second Couple do the same :! The first Man slips within the second Couple, and takes the second Woman, and leads her thro' the third Couple, and cast up, the first Woman and second Man takes Hands and turn quite round at the same Time; then the first Woman takes her Partner by both his Hands, and brings him to his Place, and Sett and cast off .!

## Constant Lover. PDF2.181



Each Strain is to be play'd twice over.

The first Man and second Woman go the whole Figure thro' the first Woman and second Man .! Then first and 2d Men cross over with their Partners, and change Sides, and change Places with your Partners :! Then first Man falls between the third Cu. and the first Woman falls between the second Cu. then each take Hands and go quite round .! Then the first Man go up the middle to his Partner, then lead up a-breast with the second Cu. and cast off :!

## Wood Lark. PDF2.182



Each Strain is to be play'd twice over.

The first Man Sett to the Second Woman, and turn her half round, the first Woman and second Man do the same .! Take Hands all Four a-cross half round, then first Couple cast off :! Then first Couple Figure thro' the 3d Couple, then Figure thro' the 2d Couple .! Then first Cu. clap Hands and turn single, then turn Sides with the 3d Cu. quite round :!

## Golden Age. PDF2.183



The first strain is to be play'd twice, and the last but once  
 The first Man cast off, and the 2d Wo. cast up at the same Time, and then 1st Man cast into the  
 1st Wo's Place, and the 2d Wo. cast into the 2d Man's Place at the same Time, and half Figure  
 round their Partners into their own Places. Then first Man changes Place with the 2d Wo. and  
 the first Wo. with the 2d Man and go quite round, and cast off into the 2d Cu. Place. Then First  
 Cu. go the whole Figure with the 3d Cu. and lead thro' the 2d Cu. and cast off into the 2d Cu.  
 Place. Then cast up and half Figure with the 2d Cu. and cross over into the 2d Cu's Place.

## Disappointment. PDF2.184



Each Strain is to be play'd twice over.

Then first Cu. meet two Steps, then first Man slips without Side the 2d, and within the third  
 Men, his Partner at the same Time go in and out below the third Cu. The same back again to  
 the Top. Then the first Man turns the 2d Wo. half round with his Left-hand, and cast off below  
 her, then first Wo. turns the third Man with her Left-hand, half round, and cast up. Then the  
 first Man turn the second Man with his Right-hand, and his Partner turns the 2d Wo. with her  
 Left-hand, then Sett at Top, and cast off.

## Mrs. Hill's Dance. PDF2.185



Each Strain is to be play'd twice over.

The first Cu. slip down the middle, and Sett a-cross to the third Cu. then first Man turn the third Wo. and the first Wo. turn the thid Man .! Then Sett a-cross to the 2d Cu. then first Man turn the 2d Man half round, and first Wo. turn the 2d Wo. at the same Time :! Then Right-hand and Left round, then turn Partners Proper.! then the Man slips between the 2d Cu. and cast off, the first Wo. at the same Time go between the third Cu. and cast up, then both turn in the 2d Couple's Place :!

## Lady Dainty. PDF2.186



Each Strain is to be play'd twice over.

The first Man cross over below his Partner, the 2d Wo. at the same time Figure round her Partner into his Place, Sett and cast up, Improper.! Then the first Wo. and the second Man Figure thro' the first Man and 2d Wo. and cast up:! then first Man Sett a-cross to his Partner, and cast off, and the first Wo. cast up and turn in the 2d Cu. Place, Proper.! Then Right and Left half round, then first Cu. Sett and cast off :!

## Ormond's March. PDF2.187



Each Strain is to be play'd twice over.

The first Man Sett to the 2d Wo. then cast off, and turn the 3d Wo. with his Left-hand quite round, the 2d Wo. at the same time cast up, and turn the 2d Man half round. | The first Wo. and 2d Man Sett and cast off, and lead tho' the 3d Cu. and cast up: | The first Man takes the 2d Man by both Hands and pulls him into the 2d Wo's Place, loose Hands, Sett two steps forward and backward, then take Hands and turn half round, the 2d Wo. at the same Time cast off, and turn the first Wo. half round. | Then Right and Left, then the first Cu. mee two steps forward, clap Hands and cast off :|

## Shropshire Lass. PDF2.188



Each Strain is to be play'd twice over.

The first Couple Sett and cast off, then take Hands with the third Couple and go half round. | Then Hands back again and cast up: | Then the first Man turn the 2d, then the third Man, each quite round; the first Woman do the same with the second and third Woman at the same Time. | The Figure thro' the 2d Cu. and turn in the 2d Couple's Place :|

## The Butcher's Hornpipe. PDF2.189



Each Strain is to be play'd twice over.

The first Couple Sett and cast off, then cast up again. | the second Couple do the same :| then cross over and half Figure, and lead thro' the third Couple and cast up. | Then cast up the first Couple; then the first Couple cast up the second Couple, and Right and Left :|

## Young Roger. PDF2.190



Each Strain is to be play'd twice over.

The first Cu. cross over, the first Man cast off below the 3d Wo. and the first Wo. cast up. | Then Sett, the first Man cast up above the 3d Man, and the first Wo. cast off below the 2d Wo. | then first Man turn the 2d Wo. half round, then the 2d Man; the first Wo. turn the 3d Cu. at the same time. | then first Man leads his Partner to the Top, and cast off. | Then the first Cu. take Hands with the 2d Cu. and go half round, and turn single. | Then Hands back again and turn single :| The first Man Figure thro' the 2d and 3d Wo. to the Top, and the first Wo. at the same Time Figure thro' the 2d and 3d Men below the 3d Cu. and Sett. | Then the first Man cast off, and his Partner cast up at the same Time, and turn in the 2d Cu's Place :|

## Paston's Maggot. PDF2.191



Each Strain is to be play'd twice over.

The first and 2d Cu. take Hands a-cross, and go half round, then the first Cu. Right and Left with the 3d Cu..! Then first Cu. cross up above the 3d Cu. they change Places at the same Time, then Right and Left with the 2d Cu. :! The first and 2d Men clap Hands with their Partners; then clap Sides and turn .! Then the first Cu. Figure thro' the 2d Cu. and turn down the middle into the 2d Cu's Place :!

## Farewel to the Gout. PDF2.192



Each Strain is to be play'd twice over.

The first Wo. take her Partner by both Hands, and lead him down the middle, the first Man takes his Right-! up and shakes it, then his Left, then lead up to the Top and cast off.! The 2d Cu. do the same:! Then first and 2d Cu. turn Back to Back, clap Hands and turn single, then the first Cu. cross over below the 2d and go t Figure thro' the 2d Couple.! Then first Man change Place with the 2d Wo. the first Woman, the Wo. and 2d Man do the same, then Right-hands and Left half round, the first Cu. turn in the 2d Couple's Place :!



## Blackwell Hall. PDF2.193



Each Strain is to be play'd twice over.

First Man cross over behind the 3d Wo. the first Wo. goes round the 2d Man, and Sett to each other; the Man cast round the 3d Man, the Wo. round the 2d Wo. which brings them into the 2d Cu Place. | Tha Man cross over, and the Wo. cross over, the Man to the Top Cu. and the Wo. to the 3d Cu. and Sett to each other, the Man cast off, and the Wo. cast up :| Then Hey, the Man on the Mens Side, and the Wo. on the We. Side. | Then Right and Left quite round :|

## Richmond Green. PDF2.194



Each Strain is to be play'd twice over.

First Man cast off and turn the 2d Wo. the 2d Man the 1st Wo at the same Time, and both Draw. | The 2d Wo. cast up and turn her Partner, while the 1st Man turns his Partner, and Draw, which brings the 1st Cu. into their own Places: | Then the two Men change Places with their Partners, and Right and Left half round, and turn your Partners into your proper sides. | The 1st Man change Places with the 2d Wo. and the 2d Man with the 1st Wo. then Hands all four round, and cast off, then Right and Left quite round: |

## Of all Comforts, or... . PDF2.195

White-Chapel Mount. PDF2.195



The first strain is to be played twice, and the last but once

First Man turn the 2d Wo. and then his Partner .! The first Cu. lead thro' the 2d Cu. cast up and turn :! Then 1st Cu. cross over the 2d Cu. and half Figure, then cross over the 3d Cu. and half Figure, then lead up between the 3d and 2d Cu. and cast off, then Right and Left quite round, and lead thro' the 3d Cu. cast up and turn .!

## Mourning in Fashion. PDF2.196



Each Strain is to be play'd twice over.

The first Couple cast off, and turn Hands round all four, and back again, with the third Couple, into the second Cu. Place. the 2d Cu. do the same. Then the first Cu. being at Top, cast off and turn Hands Sides half round, and back again into the 2d Cu. Place. The other two do the same, which brings them into the 2d Cu. Place, the first Cu. cast off.

## Motley's St James's. PDF2.197

Mr Motley's St James's, aka. PDF2.197



Each Strain is to be play'd twice over.

The first Couple meet and fall back, and cast off into the second Couples Place, while the second Couple leads up. then all four fall back to the Wall, and cross over into anothers Places. Then Men and Women Back to Back, then Right and Left round into your own Places. Then the first Couple leads down between the second Couple and cast up to the Top, then all four clap Hands, the first Couple cast off into the second Couples Place, while the second Couple leads up.

## Diamond Hall. PDF2.198



Each Strain is to be play'd twice over.

The first Man and the first and 2d Wo. take Hands, and go a whole round to their Places. Then go Right-hands a-cross half round, and turn S. then Right and Left to your own Places : Then the 1st Cu. crosses over at Top and comes between the 2d Cu. and leads up all four a-breast and back again. Then first Cu. cast up to the Top, then all four clap Hands, the 1st Cu. casts off into the 2d Cu. Place :

## Ludlow Castle. PDF2.199



Each Strain is to be play'd twice over.

The first Cu. cast off and go the Figure of 8 thro' the 2d Cu. and cross over into the 2d Cu. Place. Then the 2d Cu. do the same: then all 4 crosses over into one another's Places, then the two Men change Places, and the We. do the same at the same Time; Then 1st Cu. leads down between the 2d Cu. and cast up to the Top. then all four clap Hands, then Men clap Hands, and the We. at the same Time. then the Men take both Hands and turn half a turn and stand Face to Face, then take your own Partners by both Hands half a turn into your own Places :

## A Trip to Westminster Hall. PDF2.200



The first strain twice, and the last but once

First Cu. cast off and lead thro' the 3d Cu. and cast up to the 2d Cu. Place, then cast up to the Top and turn your Partner:| The first Man change Places with the 2d Wo. and the first Wo. with the 2d Man; Men and We. take Hands and fall back, then change Places, the first Cu. being in the 2d Cu Place, the first Man Sett to the 2d Wo. He casts up and She casts down at the same Time, Then Sett to your Partners and cast off .|

## The Briton. PDF2.201



Note: the first and last Strains twice each, and the rest but once.

First Man leads his Partner off by the Right-hand, between the 2d Man and Wo. The 1st Wo. leads her Partner back again to the Top and turn single in your Places. The 1st Cu. being at Top, cast off below the 2d Cu. lead thro' the 3d Cu. and cast up between the 2d and 3d Cu. then to the Top and S. Sett and cast off below the Cu. Sett and cast off below the 3d Cu. Clap Hands with your Partner; cast up above the 3d Cu. and go the whole Figure of 8. Clap Hands with your Partner again, cast up and go the half Figure of 8 and cross over into your

## Green Haystings. PDF2.202



Each Strain is to be play'd twice.

First Cu. lead through the 2d Cu. and cast up and cast off. Then lead thro' the 3d Cu. and cast up and cast off. The first Cu. being in the 3d Cu. Place cross over into the 2d Cu. Place, then cast up to the top and turn 8. and cross over and turn your Partner in the 2d Cu. Place. Then half Figure with the 3d Cu. then with the 2d Cu. and clap Hands with your Partner, then cast up to the Top, then Right and Left half round, which brings you into the 2d Cu. Place.

## Tipling John on the Riot Night. PDF2.203



Each Strain is to be play'd twice.

The first Man Sett to the second Woman and turn single, and then turn into your Proper Place. Then the other Couple do the same. Then both Men change Places with both their own Partners, and Right and Left half round and turn single. Then lead through at Top and cast off, and thro' at Bottom, then cast up and turn.

## The Luxembrugh. PDF2.204



Each Strain is to be play'd twice.

The first Man cast off and turn the 3d Woman, and cast off into his Place. His Partner the same. Then the first Man turn his Partner half round with Right-hand, and back again with his Left, and cast off and lead through the third Couple, and cast up to the Top. Then cross over and half Figure with the second Couple, then Right and Left quite round with the second Couple, and turn your Partner.

## The Majors Delight. PDF2.205



Each Strain is to be play'd twice.

The first Man Sett to the second Woman and turn single, and turn her. This to the first Strain play's once. Then the other two do the same. This to the first strain play'd twice. Then the first Man and second Woman change Places, and the first Woman and second Man do the same, then Hands half round. This to the second Strain play'd once. Then cast off, and Right and Left quite round. This to the second Strain play'd twice.



## Soho Square. PDF2.206



The tune is to be play'd twice over, and each strain twice over  
 The first Man Hays on the We. Side, and his Partner on the Mens Side at the same Time.  
 Then both Hey on their own Sides:| Change Places all four and go half round.| Then cast off and  
 Right and Left quite round:| then first Cu. goes the whole Figure of 8 with the 3d Cu. .| Then  
 with the 2d Cu..| Then first Man goes on the outside the 3d Wo. and the first Wo. on the outside  
 of the 2d Man at the same Time.| Then they both cast off into the 2d Cu. Place and turn :|

## The Virgin's Frolick. PDF2.207



Each Strain is to be play'd twice.  
 The first Man turns the 2d Wo. then his own Partner, then lead thro' the 2d Cu. and cast up  
 and turn.| The 2d Cu. do the same.| Then the first Wo, goes round the 2d Man, and Sett be-  
 tween the 2d Cu. the Man at the same Time goes round the 3d Wo. and Sett between the 3d Cu..|  
 Then the first Man turns the 3d Wo. and the first Wo. turns the 2d Man, then they both go the  
 half Figure with the Couple they turn'd with, and Right and Left quite round:|

## Chalks Hornpipe. PDF2.208



Each Strain is to be play'd twice over.

First Man turns his own Partner with his Right-hand, then turn the 2d Wo. with his Left. Then turn the 2d Man with his Right till he comes into the 2d Man's Place. Then (the Partners being contrary) Hands quite round. And Right and Left quite round. Then 1st Wo. being at Top turns her own Partner which stands in the 2d Man's Place with her Right-hand, and turn the 2d. Man with her Left-hand. Then turn the 2d Wo. with your Right-hnad till she comes into the 2d Couples Place. Then Hands all four quite round. And Right and Left quite round and turn.

## The Collier's Daughter, or... . PDF2.209

Duke of Rutland's Delight, The. PDF2.209



Each Strain is to be play'd twice over.

The first Couple cross over and turn in the second Couple's Place. And then cross over and turn in the third Couple's Place. Then lead your Partner up to the Top and Hands quite round and turn all four single. then Right Left quite round and turn your Partner.

## Veal's Maggot. PDF2.210



Each Strain is to be play'd twice over.

The first Man Sett to the 2d Wo. and turn single. This to the first Strain play'd once. The other two do the. This to the first Strain play'd twice over. Then the first Man change Places with the 2d Wo. and the first Wo. with second Man, and Hands all four quite round into your proper Places at the Top, and cast off. This to the second Strain play'd once over. Clap Sides, then clap Partners, and Sett and turn your own Partners. This to the second Strain play'd twice over.

## Ponders–End. PDF2.211



Each Strain is to be play'd twice over.

The first Man Setts to the second Woman and turn single, then he turns his own Partner. Then the second Couple does the same! Then lead through the second and third Couple, and cast up on the outside of both Couple, till you come to the Top., and cast off. then Back to Back with your Partner, and Right and Left quite round!

## The 11th of July. PDF2.212

Eleventh of July, The. PDF2.212



Each Strain is to be play'd twice over.

The first Couple Sett and cast off below the second Couple. This to the first Strain play'd once. Then Sett and cast off below the third Couple. This to the first Strain play'd twice. Then lead through to the Top. This to the second Strain play'd once. Then cast off, and Right and Left quite round and turn. This to the second Strain play'd twice.

## Duke of Anjou's Flight. PDF2.213



The first strain is to be play'd twice, and the last but once

The first Cu. lead thro' the 2d Cu. and cast up, and cross over, and half Figure; then lead thro' the 2d Cu. and cast off. Then the other Cu. do the same. Then the two Men clap Hands, the two We. do the same; then clap Hands, each with your own Partners, and turn all four single, then Hands all four quite round; then Right and Left quite round and turn.

## Strawberries and Cream. PDF2.214



Each Strain is to be play'd twice over.

The first Couple cast off, and half Figure with the third Couple, then cross over to the Top and cast off. The other Couple do the same. Then the first Man change Places with the second Woman, and the second Man with the first Woman; then Hands all four half round and cast off. Then Back to Back, and Right and Left quite round.

## Burlington House. PDF2.215



Each Strain is to be play'd twice over.

First Man Sett to the 2d Wo. and 2d Man leads thro' the two We. and cast off into their own Places. The 2d Man and 1st Wo. Sett to each other, and the two We. lead thro' the two Men and cast off into their own Places. The 1st Wo. goes with inside the 2d Man and cast up between the 1st Cu. and 1st Man goes round the 3d man, and Sett between the 3d Cu. at the same Time; then 1st Man turns the 3d Wo. and the 1st Wo. the 2d Man, then turn your own Partner. then 1st Cu. goes the whole Figure of 8 with the 3d Cu. and Right and Left with the 2d Cu. quite round.

King's Maggot, or... . PDF2.216  
New York



Each Strain is to be play'd twice over.

The first Cu. cross over and turn. Then lead thro' the 3d Cu. and cast up and turn. Then first Man turns the 3d Wo. and the first Wo. turns the 2d Man, then turn your own Partner. Then the first Man turns the 2d Wo. and his Partner the 3d Man at the same Time, then turn your own Partner. The first Cu. being in the 2d Cu. Place, Hey with the 2d Man. Then Hey with the second Wo. Then the first Man and Wo. Back to Back in the 2d Cu. Place. Then Right and Left quite round.

A Pinch of Snuff. PDF2.217



Each Strain is to be play'd twice over.

The first and second Couple Sett all four and turn single. This to the first strain once. Then both Couple Back to Back with their Partners. This to the first Strain twice. Then the first Couple cross over and turn, and the second Couple cast off and turn. This to the second Strain once. Then Hands all four quite round, and each Man turn their Partners. This to the second Strain twice.

## The Bowket. PDF2.218



The first strain twice, and the last but once, and from the repeat  
 The first Man Sett to the second Woman, and turn single, then turn her. This to the first Strain  
 play'd once. Then the first Woman Setts to the second Man and turn single, then turn him. This to  
 the first Strain twice. Then the first Man clap Hands twice with his own Partner, then twice  
 with the second Man, and his Partner claps with the second Woman at the same Time; then Right  
 and Left half round and turn your Partner. This to the second Strain play'd once, and from the Re-  
 peat.

## Mark Anthony. PDF2.219



Each Strain is to be play'd twice over.  
 The first Couple leads through the second Couple and cast up to the Top, and cast off. This  
 to the first Strain once. The second Couple do the same. This to the first Strain twice. Then the  
 first Couple cross over and go the half Figure. This to the second Strain once. Then Right and Left  
 quite round and turn. This to the second Strain twice.

## Room for Ramblers. PDF2.220



The first strain is to be play'd twice, and the last but once  
 The two first Cu. lead up and back again, the 2d Cu. go round the first Cu. into their own Places, the first Cu. turn Hands at the same Time. | Then first Cu. cast off and go the half Figure thro' the 2d Cu. into their Places, the 2d Man and 2d Wo. change Places at the same Time: | (The first Cu. being in the 2d Cu. Places Improper) the first Man change with the 2d Wo. and the 2d Man with the first Wo. then lead to the Wall and back again, the first Cu. cast off. |

## The Foot-guard's March. Or.... PFD2.221

Boatswain Williams's Delight.



Note: Each Strain is to be play'd twice over.

Longways for as many as will.

The first Cu. clap and cast off, and lead thro' the 3d Cu. . | Then clap and cast below the 3d Cu. and lead quite up thro' the Top : | Then the first Man turn the 3d Wo. and the first Wo. turns the 2d Man, at the same Time; Then first Wo. turn the 3d Man, and the first Man turn the 2d Wo. at the same Time, and the first Man turn his Partner twice round . | Then cross over quite round the the 3d Cu. and Right and Left quite round with the 2d Cu. and turn your Partner : |



## Off with the Mask. PFD2.222



Longways for as many as will.

Note: The first Strain twice over, and the last but once.

First Cu. cast off, the Man fall in between the 2d Cu. and the Wo. between the 3d Cu. lead back and forward. first Cu. lead thro' the 2d Cu. and cast off .! The 2d Cu. do the same .! Then first Man and 2d Wo. change Place, then the 2d Man and first Wo. the same, Back to Back with your Partners; then all four lead thro' the 3d Cu. and cast up, and the first Cu. cross over into the 2d Cu. Place .!

## Health to the Tacker's, A. PFD2.223



Note: This Tune is to be play'd twice to the Repeat, and twice from the Repeat.  
Longways for as many as will.

The first Cu. cast off and lead thro' the 3d Cu. and cast up, and Right and Left quite round with the 2d Cu.! Then the 2d Cu. do the same.! then change Places all four with your contrary Partners, and turn all four single; then all four cross over into your proper Places.! The Right and Left quite round, and turn your Partner.:!

## Young Phillis. PFD2.224



Longways for as many as will.

Note: Each Strain is to be play'd twice over.

The first Man casts off, and the 2d Wo. cast up and go the half Figure, the Man into the Wo. Place, and the Wo. into the Man's Place.! The other two do the same.! Then all four go round into their own Places, then Back to Back with your own Partners, the the first Cu. go the helf Figure and cross over, which brings the first Cu. into the 2ds Places.! Then lead thro' the 3d Cu. and cast up, then lead thro' the 2d Cu. and cast off and turn Hands.!.

## A trip to the Camp. Or.... PFD2.225

Elverton Grove. PFD2.225



Longways for as many as will.

Each Strain is to be play'e twice over.

The first Man cast off, and the 2d Wo. cast up and clap, the first Man cast into the first Wo. Place, and the 2d Wo. into the first Man's Place, at the same Time, Then the 2d Man and first Wo. do the same :! Then the first and second Men and their Partners fell back Sides and lead into thier Places, and Back to Back; then turn, and Hey Sides, then Hands all four round, and lead thro' the Top Cu:! Then the first Cu. whole Figure with 3d Cu. and Right hands and Left quite round with the 2d Cu. and lead through the 3d Cu. and turn :!

## The Hey Makers. PFD2.226



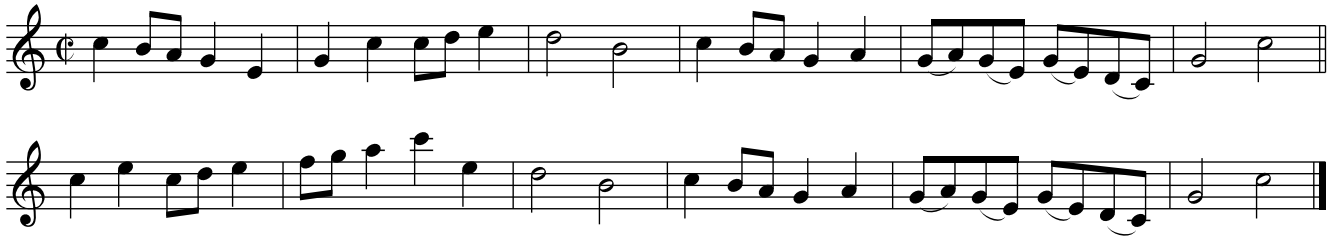
Longways for as many as will.

Note: The first Strain is to be play'd twice, and the last but once.

The first Man Sett to the second Woman, and turn her with his Right Hand.! Then his Partner does the same:! Then the first Couple lead through and cast up and clap, and cast off:!

## Sunday in the afternoon. Or.... PFD2.227

Pretenders Trip,the. PFD2.227



Longways for as many as will.

Note: Each Strain is to be play'd twice.

The first Couple cast off and turn. Then lead thro' the third Couple and cast up and turn.

Then the first man turns the third Woman, and the first Woman the second man, then turn your own Partners. Then the first man turn the second Woman, and the first Woman turn the third Man, and then turn your own Partner.

## The Tub. PFD2.228



Longways for as many as will.

Note: The first Strain twice, and the last but once over.

The first two Cu. change Places with each other, then Hands across half round and turn single. Change Places with your Partners and stop, then first Man change with the 2d, and the first Wo. with the 2d, then first Cu. cast up and turn Hands proper, the 2d Cu. at the same Time turn Hands down the middle. then Back to Back with your Partners, and clap Hands once; then your Right Hand with your Partner's Left; then your Left with your Partner's Right, the two Men and the two We. do the same; then first Cu. cast off at the same Time, the 2d Cu. turn Hands up the Middle.

## Rigadoon Royal. PFD2.229



Longways for as many as will.

Note: Each Strain is to be play'd twice over

The first man Sett and turn single, then turn the second Woman. | Then the first Woman do the same: | Then the first Couple cross over and half Figure. | Then Right and Left quite round: |

## Whitsun—holidays. Or... PFD2.230

Parson in the Peas,the. PFD2.230



Longways for as many as will.

Note: The first Strain twice, and the last but once.

The first man cast down, and the 2d Wo. cast up at the same Time, then back again. | Then first Wo. cast down, and 2d Man up at the same Time; then back again: | Then first Cu. lead up, and the 2d lead down at the same Time; then the first and the 2d men lead to the Wall, and the We lead to the Wall at the same Time ; then Hands all four quite and turn single, and Right and Left half round. |

## Good Luck at last. PFD2.231



Longways for as many as will.

Note: Each Strain is to be Play'd twice over.

The first Couple Figure in, and meet at the Top, then cast off and turn Hands proper. | the second Couple do the same: | Then the first Couple lead up, and the second Couple down at the same Time and back again, then Right and Left half round. | The first Couple being in the second Couple's Place, lead through the third Couple; then cast up and lead through the second Couple and cast off: |

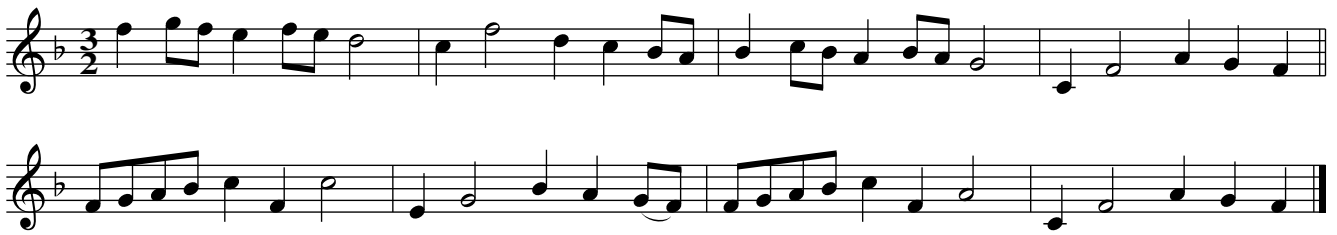
## Britains Success. PFD2.232



Each Strain is to be play'd twice over.

The first man and second Woman go the Figure of Eight. | Then the second man and first Woman do the same: | Then the first Couple cast off and turn hands; the first Couple lead down, and the second Couple lead up, and back again. | The first Couple lead thro' the third Couple, and cast up into the second Couple's Place, then Sett to your Partner, and turn single: |

## The merry Hop. PFD2.233



Longways for as many as will.

Note: Each Strain is to play'd twice over.

The first Man cast off and turn the third Woman, and stand in the second Man's Place. | Then the first Woman do the same. | Then the first Couple being in the second Couple's Place, Hands all four quite round\_ Then Right and Left quite round. |

## Whig's Folly. PFD2.234



Longways for as many as will.

Note: Each Strain is to be play'd twice over.

First Cu. lead thro' the 2d Cu and cast up, Back to Back with your Partner. | The two Men and two We. turn Hands, then Back to Back | : First Man and 2d Wo. fall into the Middle with their Backs to each other, then 2d Man and first Wo. do the same; the Men Bow, and the We. duck down and up again, (in Imitation of Country Lads and Lasses) then Hands all round, (still with their Backs together .|) The first man and 2d Wo. turn their Faces to each other with a Jump, then the 2d Man and first Wo. do the same, Hands a-cross round the contrary Way ; then first Cu. cast off. |



## Fair Quaker of Deal. PFD2.235



Longways for as many as will.

Note: Each Strain is to be play'd twice over.

The first Man and second Woman Sett and turn single, then the first Couple cast off. | The second Man and first Woman Sett and turn single ; then the second Couple cast off : | The first Man and second Woman meet and Back to Back, the second Man and first Woman do the same ; then all four Hands half round backward ' | The first Couple being in the second Couple's Place. lead to the Wall and back again, the first Couple lead thro' the second Couple, and cast off : |

## Orange Nan. PFD2.236



Longways for as many as will.

Note: Each Strain is to be play'd twice over.

The two first Men change Places with their Partners, then the first Man changes with the 2d Wo. (now the first Wo. is in the first Man's Place, and the 2d Wo. in the first Wo's Place, and the first man in the 2d Man's Plece, and the 2d Man in the 2d Wo. Place.) | Then the Men change Places with their Partners, the 2d man change Place with the first Wo. (now allproper) | : Then the Men and We. Back to Back, then Right and Left with your Partners. | Then cross over two Cu. and cast up into the 2d Cu. Place, and turn Hands : |

## Serjeant Kyte. PFD2.237



Longways for as many as will.

Note: Each Strain is to be play'd twice over.

The first Cu. cast off, and the 2d Cu. turn Hands up the Middle at the same Time. Then the 2d Cu. cast off, and the first Cu. turn Hands up the middle at the same Time. Then all four fall in the Middle with their Backs to each other, and then go back again to their Places, then take Hands quite round, then turn your Partners. Then lead to the Wall and back again, then Right and Last quite round, then the first Cu. cast off.

## Windsor Prophecy. PFD2.238



Longways for as many as will.

Note: Each Strain is to be play'd twice over.

The two first Cu. Hands all four half round, and turn single, then the other half round and turn single. Then Hands a-cross half round and back again, and turn single; then the other half round and turn single. The first Man go to the 2d Wo. and lead her into his Place, and cast off into her Place. The 2d Man do the same with the first Wo. (the first Cu. being in the 2d Cu. Place, and all four improper) the first Cu. cast up, then change Places with your Partners, then first Cu. cast off.

## Windsor Tarras. PFD2.239



Longways for as many as will.

Note: The first Strain is to be play'd twice, and the last but once.

The first Couple cast off, and the Man Hey with the third Couple, and the Woman Hey with the 2d Cu.! Then the first and 3d Cu. turn Hands a-cross all four and back again !: Then they Right and Left quite round with the 2d Couple.!

## Next Oars. Or... PFD2.240

Sheep-shearers, The. PFD2.240



Longways for as many as will.

Note: Each Strain is to be Play'd twice over.

The first Cu. cast off and cast up.! Then Hands across with the 2d Cu. quite round:! Then lead thro' and Back to Back with your Partner.! Then cross over the 2d Cu. and cross over the 3d Cu. to the Bottom ; then the first Man Heys on the Men's Side, and the Wo. on her own Sde, then the first Cu. lead thro' the Top and turn !:

## Tomas I cannot. Or... PFD2.241

Tom Trusty. PFD2.241



Longways for as many as will.

Note: Each Strain is to be Play'd twice over.

The first Couple cast off. | Then cast up again |: Then cross over, and go the Figure thro' the second Couple. | Then lead thro' the third Couple, and cast up, and turn Hands |:

## Peace and Plenty. Or... PFD2.242

Old Oxford. PFD2.242

Old Tom of Oxford, aka. PFD2.242



Longways for as many as will.

Note: Each Strain is to be play'd twice over.

The first Cu. cast off behind the 2d Cu. and Jump, then cast off into the 2d Cu. Place, and Jump, then lead thro' the 3d Cu. and cast up into the 2d Cu. Place. | Then first and 2d Cu. lead to the Wall and back atain, then the 2d Cu. lead thro' the first Cu. and cast up into the first Cu. Place |: Then the first Cu. being in the 2d Cu. Place, the first Man change Places with the 2d Wo. and the 2d Man with the first Wo. then turn Hands half round. | Then Right and Left all round, then all four turn single |:

## Brook and Hilliar. PFD2.243



Longways for as many as will.

Note: Each Strain is to be play'd twice.

The first Cu. cast off and cast up again. | Then the 2d Cu. cast off below the 3d Cu. and lead up and cast off into their own Places: | The the two first Cu. follow each other half round, then clap Hands once, the follow the other half round, then clap Hands once as before. | Then the two Men go the half Figure between the two We. then the first Cu. cast off.: |

## Fair Phillis. PFD2.244



Longways for as many as will.

Note: Each Strain is to be Play'd twice over.

The first Couple cross over. | Then Back to Back: | Then change Place with your Partner, then change Place with the second Couple ; Then all four Sett in the Middle: then Sett back again, and cast off. | Then cross over, and Figure thro' the third Couple, and cast up: |

## Grange Court. PFD2.245



Longways for as many as will.

Note: Each Strain is to be play'd twice over.

First lead to the Wall and back again,| Then lead thro' and cast up:| Then the first Man change Place with the 2d Wo. then the first Wo. with the 2d Man, Hands half round and cast off.| Then the two Men lead thro' the two We then the two We. lead thro' the two Men:|

## Jolly Bacchus. PFD2.246

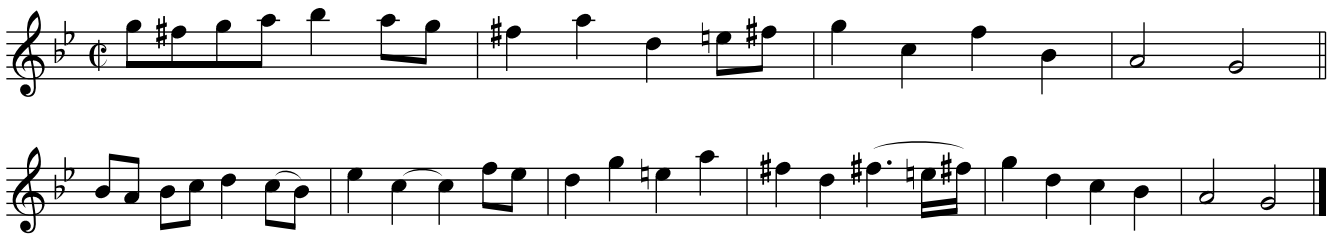


Longways for as many as will.

Note: The first Strain twice, and the last but once over.

The first Cu. go the wole Figure thro' the 2d Cu. and turn single.| Cast off, lead thro' the 3d Cu. cast up into the 2d Cu. Place, and turn single:| First man change Places with the 2d Wo. and the 2d Man with the first Wo. all four meet in the Middle and back again ; Hands half round, (which brings the first Cu. into their own Places, then Back to Back with your Partners, then the first Cu. cast off and turn Hands.|

## Doway. PFD2.247



Longways for as many as will.

Each Strain is to be play'd twice.

The first Couple lead through the second Couple, and cast up. | Then the second Couple lead through the third Couple, and cast up: | Then the three first Men and the three first Women go the Hey at the same Time. | Then the first Couple cast off and turn Hands: |

## Quesnoy. PFD2.248



Longways for as many as will.

Note: Each Strain twice over.

The first Cu. go the whole Figure of Eight. | Then the 2d Cu. go the whole Figure: | Then cast off, the Man fall in between the 3Cu. and the Wo. between the 2d Cu. the Man cast up, and the Wo. cast off into the 2d Cu. Place. | Then lead to the Wall, and back again, then lead thro' the 2d Cu. cast off.: |

## Neptune's Triumph. PFD2.249



Longways for as many as will.

Note: Each Strain is to be play'd twice over.

The first Man turn the 2s Wo. then cast off with his Partner. The 2d Man do the same :

The first man change Place with the 2d Wo. and the 2d man with the first Wo. then Hands half round, and then the first Cu cast off. Then the first Cu lead down the Middle, and cast up behind the 3d Cu. into the 2d Cu. Place, and turn Hands:

## Vicar of Taunton—Dean. PFD2.250



Longways for as many as will.

Note: The first Strain twice, and the last but once.

The two first Couple leap up all four abreast and turn single. Then lead down again and turn single. Then the first Couple lead down the Middle of the 2d Couple, and the Outside of the third Couple, then lead up the Middle of the third Couple, and Outside of the 2d Couple, and cast off.



## Argyie. PFD2.251



Longways for as many as will

Note: Each Strain is to be play'd twice over.

The first Man and 2d Wo. Foot it, and turn single. The 2d Man and first Wo. do the same:|

The first Man change Places with the 2d Wo. and the 2d Man with the first Wo. then lead to the Wall, and back again, the Hands quite round. (Now the Men are on the We. Side) take Hands with your Partners and draw into each others Place. Turn your Partners half round, then all four turn single, the first Cu. cross over, Figure in, and cast off:|

## Mohocks. PFD2.252



Longways for as many as will

Note: The first Strain is to be play'd twice, and the last but once.

The first Man cast off, his Partner follows him, then go the half Figure thro' the 2d Cu. (which brings you into the 2d Cu. Place). The 2d Cu. do the same:| The two first Cu. Back to Back, the the first Cu. lead thro' the 3d Cu. and cast up into the 2d Cu. Place. |

## Captain Corbet's Maggot. PFD2.253



Note: Each Strain is to be play'd twice over.

The first Cu. cast off below the 2d Cu. the 2d Cu do the same: The first Cu. Figure in, and then Right and Left quite round. Then Hands across quite round, then the first Cu. cast off and turn Hands in the 2d Cu. Place:

Or, thus : The first Man and 2d Wo. Foot it and turn single .! The other Cu. do the same: Then the first Mand change Place with the 2d Wo. and the 2d with the first Wo. then Hands quite round. Then all four turn single; then the first Cu. cross over, Figure in and cast off:!

## Kelway's Maggot. PFD2.254



Longways for as many as will.

Note: Each Strain is to be play'd twice over.

The first Man and 2d Wo. makes the first New Rigadoon Steps, then a Boree round to the Right-Hand, and into each other's Place ; the 2d man and 2d Wo. makes a slip and a bound to the Right-Hand, then towards the Left ; then a Boree round to the Right-Hand, and Hop all four into their Proper Places as they were. the first Wo and 2d Man the same ; then all four repeats the slips and bounds as before: Then the first man and first Wo making two Marches, change Places and cast off into the 2d Place (Improper) lead down thro' the next Cu. and cast up into the 2d Cu. Place, the Man being between the two We. and the Wo. between the Men, Sett to your Partners on both sides twice, first to the Right, and then to the Left, then Couple back and close. The right and Left Sideways, till the first Man and Wo. are in the 2d Cu. Place Proper:!

## Old Hob. Or... PFD2.255

Mouse Trap, The. PFD2.255



Longways for as many as will.

Note: Each Strain is to be Play'd twice over.

First Man turn the 2d Wo. then cast off with his Partner. The 2d man do the same with the first Wo. Then the first Man change Places with the 2d Wo. and the 2d Man with the first Wo. and Hands half round, then the first cast off. Then first Cu. lead down the Middle, and cast up behind the 3d Cu. into the 2d Cu. Places, and turn Hands.!

## Stock Jobbers. PFD2.256

Xerxes, aka. PFD2.256



Longways for as many as will.

Note: Each Strain is to be play'd twice over.

The first Cu. Sett and turn single, and Hands half round.! Then Cast up and go the half Figure into their own Places.! Then all four meet and clap Hands once, and turn single, then back again, clap Hands and turn single.! Then the two Men lead thro' the two We. and turn Hands.! The first Cu. Seet, cast off and turn Hands.! Then Right and Left quite round.:||

## Noint the Teazer PFD2.257

Zealand, aka. PFD2.257



Longways for as many as will.

Note: Each Strain is to be play'd twice over.

The two 1st Cu. fall back, and forward again then single, then Men changing Places with the We. Then the 1st man change Places with the 2d Wo. and the 2d Man with the 1st Wo. The 1st Cu. being in the 2d Cu. Place cast up, then all four lead to the Wall and back again. Then the 1st Cu. go the half Figure thro' the 2d Cu. then turn Hands with your Partner half round, and cast off.

## A Trip to Blenheim. PFD2.258



Longways for as many as will.

Note: Each Strain is to be Play'd twice over.

The two first Cu. lead to the Wall; and back again, then Back to Back with your Partners. Then the first Cu. lead down the Middle, and cast up behind the 3d Cu. into the 2d Cu. Place, then turn Hands. Then the first Man change Places with the 2d Wo. and the 2d Man with the first Wo. then the first Cu. go the half Figure into their own Places. Then cross over and go the half Figure into the 2d Cu. Place.

## Masquerade Royal. PFD2.259

Temple Barr, aka. PFD2.259



Longways for as many as will.

Note: The first Strain twice, and the last but once.

First four Hands half round and Foot it, then the other half round and Foot it, then lead to the Wall and back again, then all four turn single; then lead up and back again. then the first Couple slipping down into the second Couples Place, turn Hands round.

---

Or thus: The first Cu turns single, then lead down thro' the 2d Cu. and cast up again. The 2d Cu. do the same. Then the three first Cu. go the Hey. The first Cu. cast off and turn Hands.

## Somerset House PFD2.260

Olderness, aka. PFD2.260



Longways for as many as will.

Note: Each Strain is to be play'd twice over.

The first Man Back to Back with the 2d Wo.! The first Wo. Back to Back with the 2d man!

The two Man Back to Back, and the two Women Back to Back at the same Time.! Then the first Couple go the half Figure and cross over:!

---

Or Thus: the two 1st Men cange with their Partners, 1st man with the 2d Wo.! Then the men change Places with their Partners, the 2d Man change Places with the 1st Wo. (now all Proper):! The Men and We. Back to Back, and Righ and Left with your Partners:! then cross over two Couple, and cast up in the 2d Cu. Place, then turn Hands:!

## Oxford Act. PFD2.261

Orangsebe, aka. PFD2.261



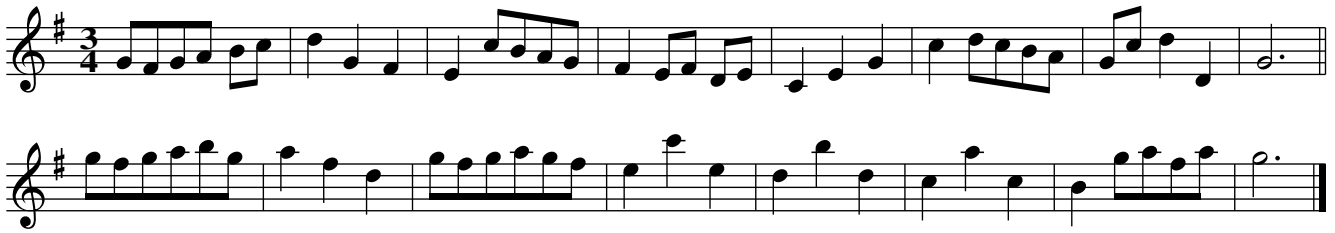
Longways for as many as will.

Note: Each Strain twice over.

The 1st Cu. cast off and turn Hands, then the two 1st Cu. lead all four to the Wall and back again, then turn single .! Then the 2nd Cu cast off and turn Hands, then cast up again and Back to Back :! (The 1st Cu. being in the 2d Cu. Place).! All four Hands half round and turn single, then turn Hands the other half round and turn single .! Then Back to Back with your Partners, and Back to Back Sides, then Right and Left quite round :!

## Mademoiselle Dupingle. PFD2.262

Sabina, aka. PFD2.262



Longways for as many as will.

Note: Each Strain is to be play'd twice over.

The two first Cu. Hands all four round the Minuet Step, and turn single .! Then the other half round and turn single :! Then the first Cu. cast off and turn Hands .! The lead thro' the 3d Cu. and cast up :!

---

Or thus: The first Cu. cast off and up again .! The 2d Cu. cast off below the 3d Cu. and back again to their Places :! Then the two first Cu. follow each other half round, then clap Hands once, then follow the other half round, and clap Hands once .! The two Men go the half Figure between the two Women, then the first Cu. cast off :!

## A Poor Shepherd in Love. PFD2.263



Longways for as many as will.

Note: The first Strain twice over, and the last but once.

The first Cu. cast off and meet below the 2d Cu. then lead thro' the 3d Cu. and cast up into the 2d Cu. Place .! Then 2d Cu. do the same :! Then all four fall down the Middle with their Backs together, then up to their Places again, and all four Hands half round, then fall in the Middle again as before and back again; (now the first Cu. being in the 2d Cu. Places Improper) go the half Figure, and it will bring them in the 2d Cu. Places Proper .!



## Dunkirk. PFD2.264

Daugbett, aka. PFD.264



Longways for as many as will.

Note: Each Strain is to be Play'd twice over.

The 1st Man turns the 2d Wo. then 1st Cu. cast off .! Second Man turn the 1st Wo. and the 2d. Cu. cast off :! The 1st Cu. take Hands and gallop down the Middle into the 2d Cu. Place, then turn single, and lead thro' the 3d Cu. and cast up into the 2d Cu. Place .! Then lead up all four a-breast and back again, the 1st Cu. cross over and turn Hands half round into the 2d Cu. Place :!

## LINCO. PFD2.265



Longways for as many as will.

Note: Each Strain is to be play'd twice

The first Cu. cross over, Figure inn, and cast off into the 2d Cu. Place .! First Man cross over with the 2d Wo. and the 2d Man with the 1st Wo. all four turn single quick, and go over into their own Places :! Then all four clap Hands three times, the 1st Cu. cast off, clap Hands, and turn your Partner .! Lead thro' the 2s Cu. then cast off and turn Hands :!

## Barnicles. PFD2.266

Batavia, aka. PFD2.266



Longways for as many as will.

Note: Each Strain is to be play'd twice over.

The first Couple cross over, then go the half Figure, which brings them into the 2d Cu. Place .! Then the two Women lead through the two Men, then the first Couple lead through the 2d Cu. :! (Now first Couple being in the 2d Couples Places) turn Hands up a quarter round, the first Couple cast off, and turn Hands into the second Couple's Place .! Then go the whole Figure through the second Couple :!

## High Ginks. PFD2.267



Longways for as many as will.

Note: The first Strain is to be play'd twice, and the last but once.

The first Couple cast off, the second Couple turn up the Middle (at the same Time,) then the 2d Couple cast off, and the first Couple turn Hans up the Middle .! Then lead to the Wall and back again, then all four cross over and turn single :! (The Men being on the Women's Side) The first Man change Place with the second Woman, and the second Man wit the first Woman, then the first Couple lead through the second Couple and cast off .!

## The Phoenix. PFD2.268



Longways for as many as will.

Note: Each Strain is to be play'd twice over.

The first Cu. lead up and the 2d down at the same Time, and Back to Back, then all four Hands round .! The first Cu. cast off, then Back to Back :! Then the 2d Cu. cast off .! The first Cu. cast off :! The first Cu. go the whole Figure, cast off and turn Hands .! Then all four Back to Back and turn Hands :!

## North's Maggot. PFD2.269



Longways for as many as will.

Note: Each Strain is to be play'd twice over.

The first Cu. cast off and meet below then 2d Cu. and cast up again .! Then the first Cu. cross over, and Figure in between the second Cu. :! Then all four turn single, and give one clap, turn single back again, and give one clap, and all four go Hands quite round .! Then the two Men take Hands and lead to the Wall, the two We. doing the same at the same Time, and back again, then the first Cu. lead up through the second Cu. and cast off :!

## Duke d'Amount's Delight. PFD2.270



Longways for as many as will.

Note: Each Strain is to be play'd twice.

The first Couple Figure inn and cast up, then cross over below the 2d Couple :| The 2d Couple do the same :| Then Right and Left quite round, and the first Couple cast off :| Then Back to Back with your own Partners, then lead through the 2d Couple and cast off :|

## The Taylor's Hop or.... PFD2.271

Kitt Cucumber. PlayfordVol2.271



Longways for as many as will.

Note: Each Strain is to be play'd twice over.

The two first Couple lead up, and give a Leap cross Leg'd and back again, then lead to the Wall, and give a Leap cross Leg'd and back again :| Then the first Couple cast off, and Figure into the second Couple's Place :| Then Back to Back, and turn Hands twice round :| The two Men lead thro' the two Women, then the first Couple lead through the second Couple, and cast off :|

Rinaldo, or... PFD2.272  
Hopping Lady, The. PFD2.272



Longways for as many as will.

Note: Each Strain is to be play'd twice over.

First Man turn the 2d Woman and cak (cast?) off .! The 2d Woman turn the first Man and cast off :!  
Lead to the Wall, back again, all four take Hands and go quite round .! The first Couple lead  
thro' the 2d Couple and cast off, and Foot it to each other, then turn Hands :!

Our happy Meeting. PFD2.273



Longways for as many as will.

Note: The first Strain twice over, and the last but once.

The first Man and second Wo. goes the whole Figure round the first Wo. and the second Man .!  
The first Wo. and second Man do the same :! Then all four clap Hands with their own Partners and  
turn single, then the first Cu. take both Hands and Gallop down below the second Cu. then Gallop  
up again, cast off and Figure .!

## Green Goose Fair. PFD2.274



Longways for as many as will.

Note: Each Strain is to be play'd twice over.

The first Man turn the second Woman .! The second Man turn the first Woman :! Then first Cu. cast off, and lead through the third Cu. then cast up into the 2d Cu. Place, and turn Hands .! Lead through the 2d Cu. and cast off, Right-hands and Left quite round :!

---

Or Thus: First Cu. cast off, the 2d Cu. turn Hands up the Middle (at the same Time .! The 2d Cu. cast off, the first Cu. turn Hands up the Middle (at the same Time) :! All four fall in the Middle with your Backs to each other, and back again to their Places, the Hands quite round, and turn your Partners .! Then lead to the Wall and back again, then Right and Left quite round :!

## Fly Boat. PFD2.275



Longways for as many as will.

Note: Each Strain is be play'd twice over.

The two 1st Cu. Hands a cross half round, and back again .! Then lead to the Wall and back again, and Back to Back with your Partners :! Lead down and cast up behind the 2d Cu. and turn S. then cross over, Figure inn, which brings you into the 2d Cu. Place .! The 1st Man cast up, the 1st Wo. cast off at the same Time, and both fall inn between the 2d and 3d Cu. turn S. then lead forward three and three abreast, and back again, the 1st Man cast off, and the 1st Wo. cast up into the 2d Cu. Place :!

## Queen's Square. PFD2.276



Longways for as many as will.

Note: Each Strain is to be play'd twice over.

The first Man and 2d Wo. goes round their Partners on their left Side, and take their Partners by the Right-hand with their Left, and so draw back into each other Cu. Places .! Then the 2d Man and first Wo. do the same, which will bring all four into their own Places again :! The two Men take both Hands, the We. do the same, then first Man draw up, and 2d Wo. draw down, then slip over and slip all to your own Places and turn single .! Then each Cu. take both Hands and draw, back into each others Place, then the first Man slip up the Middle, and down behind the 2d Man, the first Wo. slipping up behind the 2d Wo. and so down the Middle :!

## Royal Fishery. PFD2.277



Longways for as many as will.

Note: Each Strain twice over.

The first Man takes his Wo. by the Left-hand with his Right, and lead her round the 2d Man, till they come all four abreast, and lead up the Room and fall back again .! Then all four Hey till they come to the same Place again :! Then first Cu. cross over below the 2d Cu. and lead between, the 3d Cu. cast up and turn into the 2d Cus. Place .! Then the 2d Cu. turn down the Middle, and the first cast up, then first Cu. turn down the Middle, and the 2d Cu. cast up :!

## My Ladys Lap Dog. PFD2.278



Longways for as many as will.

Note: The first Strain twice, and the last but once, and from the Repeat.

First Cu. take Hands, draw back all in a Row, and turn single then draw back to your own Places and turn single then back again .! Then all four Back to Back with your Partners, then Back to Back Sides :! Then first Man cast off to the 2d Wo. Place, the 2d Wo. casting up at the same Time to the 1st Man's Place, their Partners following them; then all four go Hands half round into their own Places; the two Men go the whole Figure round the two We, and the two We. go the whole Figure round the two Men, and the 1st Cu. cast off.

## Young Phillis of Wakefield. PFD2.279



Longways for as many as will.

Note: The Tune is to be play'd Three times over.

The first Couple lead down through the second Couple, then cast up and turn both Hands, the second Cu. do th same .! Then the Men lead inn round the two Women, clap Hands and change Places with each other, then the two We, do the same :! Then all four take Right-hands a-cross and go half round, then Left and go back again, then Back to Back with your Partners, clap Hands and turn single .!



## Lincoln Heath. PFD2.280



Longways for as many as will.

Note: The first Strain twice, and the last but once.

The first Man cast off into the 2d Man's Place, the 2d Wo. cast up at the same Time into the 1st Wo's. Place, and the 1st Man and 2d Wo. Back to Back :! Then 2d Man cast off into his own Place, and 1st Wo. up into her Place and Back to Back :! Then all four fall back, then meet again, and clap Hands with your Partners, and turn single; then cross all over and Face about, clap Hands Sides, and go all four Hands half round .!

## Cheshire Hall. PFD2.281

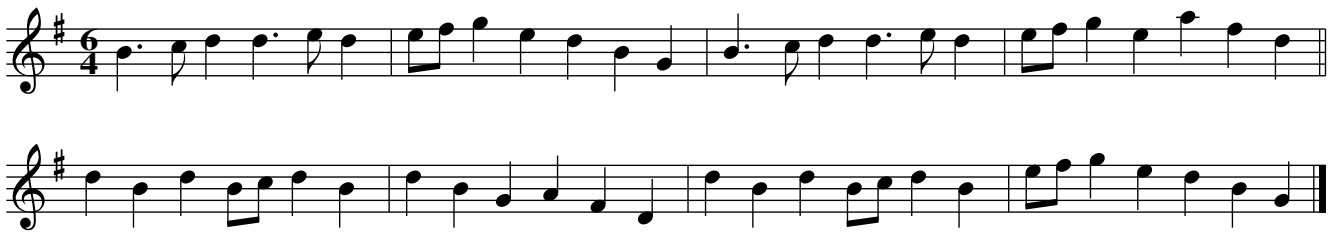


Longways for as many as will.

Note: Each Strain is to be play'd twice over.

The first Man clap Hands with the second Woman and turn single, then the first Man and second Couple go Hands quite round :! The first Woman do the same :! Then take both Hands with your Partners, and draw quite round into your own Places again .! The first Couple cast off and go Back to Back into the second Couples Place :!

## Kettleby's Whim. PFD2.282



Longways for as many as will.

Note: Each Strain is to be play'd twice over.

The first and second Couple go Right-hands and Left half round .! Then go Left-hands and Right back again to your Place :! Then the first Couple lead down the Middle, the second casting up, then the second Couple lead down the Middle, the first casting up .! Then the first Couple clap Hands and cast off :!

## Greenwich Hospital. PFD2.283



Longways for as many as will.

Note: Each Strain is to be Play'd twice over.

First Cu. cross over and turn into the 2d Cu. Place, and cast up into their own again .! Then the first Man turn the 2d Man quite round with his Right-hand, and back again with his Left, the first Wo. turning the 2d Wo. at the same Time with her Right, and back with her Left :! Then all four meet and turn single, then take Right-hands across and go quite round .! Then all four Sett to your Partners and fall back from each other, and go Right-hands and Left half round :!

## Evan's Delight. PFD2.285



Longways for as many as will.

Note: Each Strain is to be Play'd twice over.

First Man cast off and Figure round the 3d Wo. the 1st Wo, cast off at the same Time and Figure round the 2d Man, so meet and turn into the 2d Cus. Place .! Then the 2d Cu. cast off and do the same :! The 1st Cu. cross over below the 2d Cu. and cross below the 3d Cu. and turn single .! Then 1st Cu. lead up through the 3d Cu. and take Hands with the 2d Cu. and go quite round :!

## All together, one after another. PFD2.284



Longways for as many as will.

Note: Each Strain is to be play'd twice over.

The 1st Man goes quite round on the Inside of the 2d Man, then round his Partner to his own Place again .! The 1st Wo. goes quite round on the Inside the 2d Wo. then round her Partner into her own Place again :! The 1st Man cast off, then the 1st Wo. cast off, then Right Hands and Left half round .! The 1st Man change Places with the 2d Wo. and the 1st Wo. with the 2d Man, then turn both Hands with your Partners :!

## Jumper's Chase. PFD2.286



Longways for as many as will.

Note: The first Strain twice, and the last but once over.

First Couple cross over and go the Figure between the second Couple. This to the first Strain once. then the second Couple do the same. This to the first Strain twice. Then the first Couple cast off and lead down through the third Couple, and cast up into the second Couples Place, then cross quite round the Second Couple. This to the last Strain play'd once.

## Portabella. PFD2.287

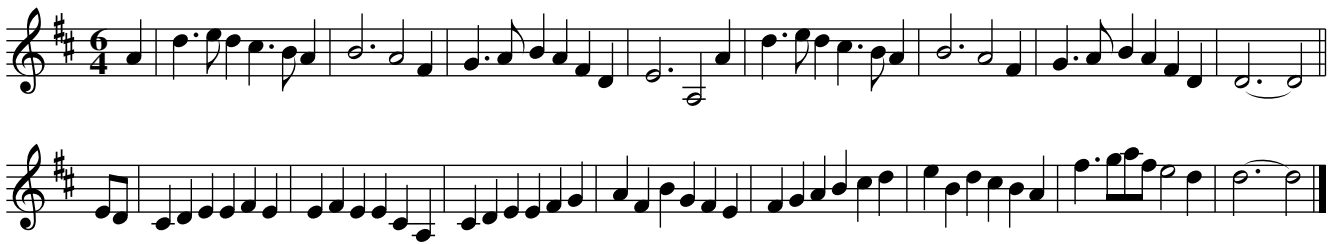


Longways for as many as will.

Note: Each Strain is to be play'd twice over.

The first Man cast off and go quite round the 2d Cu. to his own Place again, his Partner following him at the same Time .! Then the first Wo. do the same, and her Partner following her to their own Places as before :! Then the first Man Sett to his Partner, and both turn single, then both turn Hands .! The the first Cu. cross over below the 2s Cu. and Figure inn :!

## Doctors Commons. PFD2.288



Longways for as many as will.

Note: Each Strain is to be play'd twice over.

The 1st Man goes Back to Back with the 2d Wo. and turn the 2d Man with his Right Hand .! The 1st Wo. go Back to Back with the 2d Man, and turn the 2d Wo. with her Right Hand :! The 1st Cu. goes the whole Figure thro' the 2d Cu .! Then Hands all four quite round, then the 1st Cu. cast off :!

## Royal Sovereign. PFD2.289



Longways for as many as will.

Note: Each Strain is to be Play'd twice over.

The first Man go Hey with the first and second Woman .! Then the first Woman go the Hey with the first and second Man :! Then the first Couple lead down the Middle and cast up, cross and turn into the second Couple's Place .! And then go the whole Figure round the second Couple :!

## Wood's March. PFD2.290



Longways for as many as will.

Note: Each Strain is (to) be play'd twice over.

The first Man cast off and turn the 2d Wo. with both Hands, and stand in the 2d Man's Place .| Then the first Wo. do the same :| Then the first Man goes the whole Figure round the 2d Cu. the first Wo. going the whole Figure round the 3d Cu. at the same Time .| Then the first Man goes the whole Figure round the 3d Cu. and the first Wo. going the whole Figure round the 2d Cu. at the same Time :|

## St. James's Park. PFD2.291



Longways for as many as will.

Note: Each Strain is to be play'd twice.

The first Couple Figure inn between the second Couple, and cross over into the second Couples Place .| The second Couple do the same :| The first Couple cast off and lead up the Middle and cast off again .| Then lead thro' the third Couple and cast up and turn both Hands :|

## Brittains Glory. PFD2.292



Longways for as many as will.

Note: Each Strain is to be play'd twice.

First Man and 2d Woman take both Hands and turn quite round, then first Man cast off below the 2d Man, and 2d Wo. cast up above the first Wo. at the same Time .| The 2d Man and first Wo. do the same after them :| Then first Men Hey with the 2d and 3d Men, the first Wo. Hey with the 2d and 3d We. at the same Time, till all comes into their Places again .| Then the first Cu. cast off and go Right-hands and Left quite round with the 2d. Cu. which brings the first Cu. into the 2d Cu. Places :|

## Love and Honour: Or... PFD2.293

Love in a Hop-yard. PlayfordVol2.293



Longways for as many as will.

Note: Each Strain twice over.

The 1st Man and 2s Wo. turn quite round, then 1st Man cast off .| The first Wo. turn the 2d Man quite round, then the 1st Wo. cast off :| The 1st Man turn the 3d Wo. then the 2d Wo. then 1st Wo. turn the 3d and 2d Men at the same Time, then both meet at the Top, and turn half round .| The Men joyn 1st Right, then Left Hands across, shake four Times, and cast off :|

## His Majesty's Health. PFD2.294



Longways for as many as will.

Note: The first Strain twice over, and the last but once.

The 1st Cu take both Hands, and turn quite round, and cast off .! The 2d Cu. do the same :! The 1st Man go to the 2d Wo. and Salute her, then fall back to his Place again; then the 2d Man Salute the 1st Wo. and fall back again, then Right and Left half round .!

## Virgin Pullets. PFD2.295



Longways for as many as will.

Note: Each Strain is to be play'd twice over.

The 1st Man go round above his Wo. and Figure round the 2d Wo. the 2d Man go round below his Wo. and Figure round the 1st Wo. at the same Time .! The two We. do the same :! The 1st Man turn the 2d Wo. with his Right Hand, and the 1st Wo. turn the 2d Man with her Right Hand .! The all four clap Hands with your Partners, then clap Hands Sides, then with your Partners again, and the 1st Cu. cast off :!



## Happy Conclusion. PFD2.296



Longways for as many as will.

Note: Each Strain is to be play'd twice over.

The 1st Cu. lead thro' the 2d Cu. and go on the Outside below the 3d Cu. then lead thro' the 3d Cu. and go on the Outsid(e) the 2d Cu. into their own Places again .! Then 2d Cu. cast up and lead down between the 1st Cu. and go on the Outside below the 3d Cu. and slip up the Middle into their own Places again :! The 1st Man change Places with the 2d Wo. and the 1st Wo. with the 2d Man, then 1st Cu. cast up, and the 2d lead down, and turn all four into your own Places .! Right-hands and Left quite round, then 1st Cu. turn both Hands down the Middle, and the 2d Cu. cast up at the same Time :!

## Charming Maid. PFD2.297

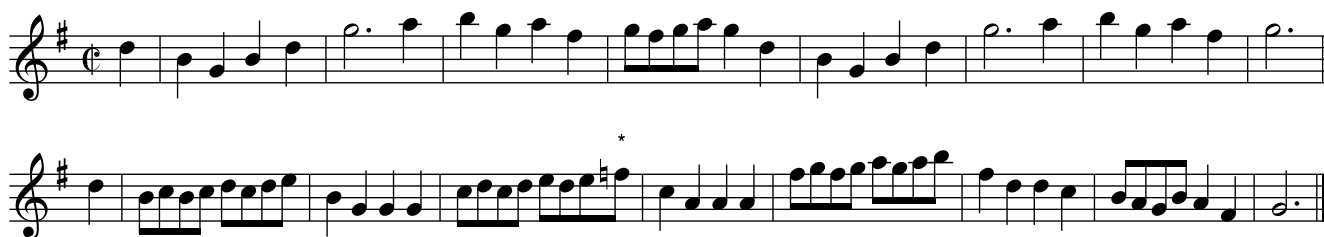


Longways for as many as will.

Note: The first Strain is to be play'd twice, and the last but once.

The 1st Cu. cross over below the 2d Cu. and Figure thro' the 3d Cu. .! The 2d Cu. do the same :! The 1st Cu. go between the 2d and 3d We. then cast off, and the Figure thro' the 2d and 3d Men, then the 1st Man fall back with the 2d Cu. and 1st Wo, fall back with the 3d Cu. and cast off, then first Wo. cast up, and both turn in the 2d Cu. Place .!

## Zephirs and Flora. PFD2.298



Longways for as many as will.

Note: Each Strain is to be play'd twice over.

The first Man and 2d Wo. go Back to Back, then give each other their Right-hands, and then their Left hands across, and holding so change Places. | Then the 1st Wo. and 2d Man do the same :| The 1st Cu. being in the 2d Cu. Place Improper, cast up and Figure round the 2d Cu. which brings them into their own Places Proper .| The 2d Cu. being in their own Places Improper, do the same, which brings them to the 1st Cu. Place :|

## Fop's Fancy. PFD2.299



Longways for as many as will.

Note: Each Strain is to be play'd twice over.

First Cu. take Hands with the 2d Man, and go all three quite round, and turn single .| Then all four take Hands and go round back again and turn single :| The 1st Man change Places with the 2d Wo. and the 1st Wo. with the 2d Man .| Then Right Hands and Left half round, and each turn his Partner :| The 1st Cu. cast off and go Back to Back .| Then all four Right-Hands and Left quite round :|

## Happy Couple. PFD2.300



Longways for as many as will.

Note: Each Strain is to be play'd twice over.

The two first Men Sett to their Partners and turn single, then change Places and change Sides .! Then Sett to each other again as before, and all turn single, the 1st Cu. cross up to the Top, the 2d Cu. change Places at the same Time :! Hornpipe: Then take Hands Sides and fall back, then 1st Cu. cast off .! Then turn Sides quite round with 3d Cu. :! The 1st Man go the Hey with the 3d Cu. the 1st Wo. go the Hey with the 2d Cu. at the same Time, then Right and Left half round with the 2d Cu. .! The two 1st Cu. lead down abreast, and turn single, clap Hands each with their Partners twice, with a short Stay between each Clap, then 1st Cu. cast off :!

## The Rover Reform'd. PFD2.301

Bavania, aka. PFD2.301



Longways for as many as will.

Note: The first Strain twice over, and the last but once.

The first Cu. Right Hands and Left with the 2d Cu. all lead up and turn single .!

The 2d Cu. cross over and Figure through the first Cu. :!

The first Cu. take Hands and lead down the Middle to the 3d Wo. and turn her round, then lead up to the Top and cast off .!

## The Queen of Hearts. PFD2.302



Longways for as many as will.

Note: Each Strain twice.

First man meet the 4th Wo. both fall back three Steps, turn single, and change Places, the first man cast up to his Place above the Men, the 4th Wo. cast off at the same Time below the We. to her Place .! First Wo. and 4th Man do the same !:

First Man change Places with the 2d Wo. and 2d Man do the same; then the first Cu lead thro' the 3d Cu. and cast up Right-Hands and Left Sides half round, lead Sides to the Wall and back again, the first Cu. Sett two S[t]eps forward, and cast off .! The 2d Cu. do the same, only instead of casting off, lead down the Middle and cast up !:

## The Tuneful Nightingale. PFD2.303



Longways for as many as will.

Note: Each Strain is to be play'd twice over.

First Man and second Woman go the whole Figure thro' the first Woman and second Man |.

First Woman and second Man do the same |: First Man lead his Partner below the second Man, and Figure through the second Couple .| Sett Sides, then Sett to your Partners, fall back two Steps, then first Couple cast off |:

## The Lovely Bride. PFD2.304

Ermina, aka. PFD2.304



Longways for as many as will.

Note: The first Strain twice, and the last but once over.

The first Cu. cross below the 2d Cu. then below the 3d Cu. .l

The first Wo. cast up and go round the 2d Man to her Place,  
the first Man follow her to his Place l: The first Man takes up  
his Wo. by both Hands and pulls her below the 2d Man, lead thro'  
the 3d Cu. and cast up, Sett, slip up the outside to the Top,  
and turn your Partner .l

## The Beau's Retreat. PFD2.305

Dearest and Fairest, The, aka. PFD2.305



Longways for as many as will.

Note: Each Strain is to be play'd twice.

The 2d Wo. cast off and go below the 3d Man, 1st Man at the same Time, follow her below the 3d Wo. then both cast up and turn in the 2d Cu. Place .l

First Man cast off and go below the 3d Wo. his Partnet follow him at the same Time below the 3d Man, then cast up and turn l: First Cu. Figure thro' the 2d Cu. and change Places; 1st Man fall between the 3d Cu. and cast up above the 2d Man, his Partner at the same Time slip between the 2d Cu. and cast off .l First Cu. Figure thro' the 3d Cu. and change Places, lead up a-breast with the 2d Cu. frst Cu. cast off l:



## Ever Pleasant. PFD2.306

Europa, aka. PFD2.306



Longways for as many as will.

Note: The first Strain twi[c]e, and the last but once.

The first Man take his Partner by her Right Hand, and lead her round him down the Middle then Sett Sides to the 3d Cu. and turn single .! Then first Wo. leads her Partner round her to the Top, and cross over below the 2d Cu. !: Then first Cu. Sett and slip on the Outside below the 2d Cu. then Right Hands and Left half round, and the first Cu. cast off .!

## As quick as you please. PFD2.307



Longways for as many as will.

Note: Each Strain is to play'd twice over.

All four Sett across, the first Couple cast off .! Then Sett across with the third Couple, and cast off !: The first Couple lead up to the Top and cast off .! The first and second Couple go the Hey, which brings the first Couple into the second Couples Place proper !:

## Jockey Rejected. PFD2.308

Griselda, aka. PFD2.308



Longways for as many as will.

Note: Each Strain is to be play'd twice over.

First Wo. cast off, and her Partner follow her below the 2d Wo. slip Inside

below the 3d Cu. fall back Sides, cast up and turn in the 2d Cu. Place proper .l

The 2d Cu. do the same l: First man Figure thro' the 2d and 3d Wo. first Wo.

Figure at the same Time thro' the 2d and 3d Man, Sett at the Top and change Places .l

Fall back Sides and slip the 2d Cu. into the first Cu. Place, Figure thro'

the 3d Cu. and turn in the 2d Cu. Place l:

## Sylvia's Serenade. PFD2.309

Kingston Hoy, aka. PFD2.309



Longways for as many as will.

Note: Each Strain is to be play'd twice over.

First Cu. dance down the Middle, cross over below the 3d Cu. then

slip Outside above the 3d Cu. and change Places .l The 2d Cu. do the same l:

First Wo. Sett to the 2d Wo. and cast off; first Wo. Sett to the 2d Man and

cast off; all four turn single .l Clap Hands, Sides thus, clap Hands on

your Thighs, clap Hands, and clap a-cross twice, then with your Partner;

the first Cu. cast off and turn l:

## Her Killing Eyes. PFD2.310



Longways for as many as will.

Note: Each Strain is to be play'd twice over.

The first Man points at the 2d Wo's Eyes, then lifts up both his Hand[s], and turns her quite round, and turn single. | The 2d Man and first Wo. do the same :| The first Cu. Sett and cast off, Sett across to the 3d Cu. and turn single, lead down the Middle and cast up |. First Cu. cast up to the Top, first Man change Places with the 2d Wo. the first Wo. and 2d Man do the same, and turn all four half round, then first Cu. Sett and cast off |:

## Kind and Easy. PFD2.311



Longways for as many as will.

Note: The first Strain twice, and the last but once.

The two first Men Figure thro' the first and 2d We. cast off and turn single in their Place .| The We. do the same |: All four go half round and turn single; the first Cu. lead down the Middle below the 3d Cu. and back again; then take Hands with the 2d Cu. and go half round, first Cu. Sett, cut clean two Steps forward, and cast off .|

## The Highlanders Wedding. PFD2.312

Wedding, The, aka. PFD2.312



Longways for as many as will.

Note: The first Strain is to be play'd twice, and the last but once.

The First Man and second Woman dance round each other to their Places .l

The first Woman [and] second Man do the same :l Right Hands and Left Sides  
half round, all turn single and d[ance] round into your Places:  
the first Couple cast off l.

## The British Toper. PFD2.313

The British Hero, aka. PFD2.313

Wright's Wisdom, aka. PFD2.313



Longways for as many as will.

Note: Each Strain is to be play'd twice.

The first Couple go the whole Figure through the third Couple .l

The second Couple do the same :l The first Couple Figure contrary

Sides, meet in the Middle, and turn Partners quite round l.

Lead to the Wall, Sides, the first Couple slip the second Couple  
below them, Sett two Steps and cast off l:

## Oswestry Wake. PFD2.314

Room for beauties, aka. PFD2.314



Longways for as many as will.

Note: Each Strain is to be play'd twice over.

The first four Cu. dance to each other, turn single and change places. Then dance as before, turn single and change places. The first Cu. go inside and outside below the 4th Cu. and turn single. Take all Hands turn half round and back again. The first Cu. lead up to the Top and turn single. Then Figure thro' the 2d Cu. and turn down the Middle.

## Flora's Vagaries. PFD2.315

Jockey and Jenney, aka. PFD2.315



Longways for as many as will.

Note: Each Strain is to be play'd twice over.

First Cu. take Hands, Sett to the 2d Cu. and cast off, then Sett to the 3d Cu.

and turn single .! First Cu. cross up to the Top, and Figure thro' the 2d Cu .!

First Cu. Sett, first Man cast off and go below the 3d Man, the first Wo. follow

him below the 2d Man at the same time .! First Wo. cast up and Figure round

the 2d Wo. the first Man at the same Time follow her above the 2d Man,

then both cast off !:

## The Merry Conclusion. PFD2.316

Assembly, The, aka. PFD2.316



Longways for as many as will.

Note: Each Strain is to be play'd twice over.

The first and 2d Cu. dance half round, clap all once and turn single .!

Then dance back again and do as before .! First Cu. Figure between

the 2d C[u]. and cross over below the 3d Cu. .! The first Man dance to

the 2d Wo. and turn her quite round .! The first Wo. and 2d Man do

the same !: The first and 2d Cu. dance to each other and change Places .!

Then take Hands and go half round, the first Cu. cast off !:



## A Health to all honest Men. PFD2.317



Longways for as many as will.

Note: Each Strain is to be play'd twice over.

First and 2d Men Sett to their Partners and turn all four single, then turn sides .l  
Then Sett and turn single all four and turn your Partners l: The first Man change  
Places with the 2d Wo. and the first Wo. with the Man, and cast off l. The first  
Man take his Partner by both Hands and draw her quite round the first Cu.  
and round the 2d Cu. into the 2d Cu. Place l:

## Dorinda's Tea-Table. PFD2.318

Pasquin, aka. PFD2.318



Longways for as many as will.

Note: Each Strain is to be play'd twice over.

First Man Sett to the 2d Wo. first Man turn the 2d Man quite round, the 2d Wo.  
turn the first Wo. quite round at the same time .l The first Wo. and 2d Man  
do the same l: First and 2d Cu. clap Hands with your Partners, turn single,  
take Hands and go half round .l Take Hands and go half round,  
all turn single, then first Cu. clap Hands and cast off l:

Dudmason Hall. PFD2.319  
Sabina and Strephon, aka. PFD2.319



Longways for as many as will.

Note: Each Strain is to be play'd twice over.

The first Cu. fall back four Steps down the Middle in the 2d Cu. Place improper, then cross over below the 3d Cu. .! Then fall round each other as before up the Middle above the 3d Cu. and cross up to the Top !: The first Cu. go the Hey, Sides with the 2d and 3d Cu. .! The first Man change Places with the 2d Wo. the first Wo. and 2d Man do the same, take Hands and go half round.; the first Cu. cast off !:

Mother Crump. PFD2.320



Longways for as many as will.

Note: Each Strain is to be play'd twice over.

First Man points at the s[e]cond Woman's Nose, then lifts up both Hands and turns her round then turn single .! The first Woman and second Man do the same !: Then first Couple Sett and cast off below the third Couple, then Sett and cast up again .! Then turn single, and Right and Left quite round !:

## Chloe's Farewel. PFD2.321



Longways for as many as will.

Note: Each Strain is to be play'd twice over.

First Wo. Figure thro' the 3d Cu. then Outside the 2d Wo. to her Place,  
the 2d Man go the whole Figure thro' the 3d Cu. at the same Time .!

First Man and 2d Wo. do the same :! First Man take his Partner by both  
Hands and lead her on the Outside below the 2d Man, Sett to the 3d Wo. then  
to the 3d Man, and turn Sides quite round !. First Wo. cast up and go  
to her Partner's Place, he follows her at the same Time, they go round  
each other proper, and turn down the Middle !:

## The Laughing Vicar. PFD2.322

Urania, aka. PFD2.322



Longways for as many as will.

Note: Each Strain twice over.

First and 2d Cu. go the Hey .l Then Right Hands and Left quite round :l

First Cu. go the Hey with the 2d Wo. then Sett to the 2d Man and turn him quite round. First Cu. Sett and cast off l. First Cu. go Back to Back, Sides

with the 3d Cu. and turn quite round and lead up to the Top, then

Sett two Steps backward and cast off l:

## Measure for Measure. PFD2.323

Thyrsis and Cloe, aka. PFD.323



Longways for as many as will.

Note: The first Strain twice, and the last but once.

The First Cu. cross over below the 2d Cu. Sett Sides with the 3d Cu. and turn Partners quite rounds. | Then cross above the 2d Cu. Sett Sides and turn quite round :| The first and 2d Men take Hands with their Partners, lead them to the Wall, cast off into their Places; first Cu. cast off, then turn Right Hands and Left quite round |:

## Joy after Sorrow. PFD2.324



Longways for as many as will.

Note: Each Strain is to be Play'd twice over.

First Man go down the Middle below the 3d Wo. first Wo. slips Outside to meet her Partner, and turn single, the first Wo slips up the Middle to the Top, her Partner slip Outside the Men, both turn single .! First Cu. Sett, go the Hey Sides with the 2d and 3d Cu. :! First Man take the 2d Wo. by her Left Hand, lead her to the 3d Cu. and turn sing[le], Figure between the first Wo. and 2d Man and turn l. First Cu. take Hands with the 2d Wo. and go round until you are Improper in the 2d Cu. Place, cross up the Middle to your Place, fall back one Step, and cast off l:

## Constant Leander. PFD2.325



Longways for as many as will.

Note: Each Strain is to be Play'd twice over.

The First and 2d Cu. take each Hands, meet all four, Dance and turn single; then first Cu. Figure thro' the 3d Cu. .l Then meet as before, with the 2d Cu. then first Cu. cross up to the Top :l The first Man take right and left Hands across (the first Wo. and 2d Man do the same) with the 2d Wo. then go all four half round, and turn single l. Then rights Hands and left round, all four meet, lift up your Hands, and clap once with your Partners, the first Cu. cast off l:

## Love in a Hop-Yard. PFD2.326



Longways for as many as will.

Note: Each Strain is to be Play'd twice over.

The first Cu. take Hands with the 2d Wo. go half round, lead thro' the 3d Cu. and cast up .l Then take Hands with the 2d Man, go half round and turn all three single :l The first Wo. cast off and go on the Outside below the 3d Man, the first Man (at the same Time) follow her, and go on the Outside below the 3d Wo. meet and cut two Capers and turn single l. Then first Man cast up and go above the 2d Man to his Place, the first Wo. (at the same Time) follow him and go above the 2d Wo. to her Place, then clap Hands twice and cast off l:

## Cupid Disarm'd. PFD2.327



Longways for as many as will.

Note: Each Strain is to be Play'd twice over.

The first Man cast off below the 2d Man, the first Wo. follow him (at the same Time) take Hands with the 2d Cu. and go half round .! Then Hands back again, the first Wo. go on the Outside round the 2d Man to her Place, the first Man, at the same Time, follow her to his Place :! The first Cu. slip Outside below the 2d Cu. and change Places, fall backsides with the 2d and 3d Cu. and turn single l.

The first Man cast below the 3d Wo. and the 3d Man. The first Wo. (at the same Time) cast up to the Top and go on the Outside below the 2d Wo. take Hands Sides, as before, and turn single l:



## Happy Improvement. PFD2.328



Longways for as many as will.

Note: The first Strain twice, and the last but once.

The first Man and 2d Wo. go the whole Figure sides .! The first Wo. and 2d Man do the same :! Then the first Man take his Partner by both Hands and lead her below the 2d Cu. and turn Sides with the 2d Cu. then first Man and 2d Wo. change Places, the first Wo. and 2d Man do the same: then fall back Sides, and turn single, dance Sideways with your Partners into each others Places, and the first Cu. cast off .!

## Come along Joan. PFD2.329



Longways for as many as will.

Note: Each Strain is to be play'd twice over.

The first Man take his Partner by her right Hand, lead her below the 2d Man, and cast off below the 3d Cu. improper .! The first Man lead his Wo. above the 3d Wo. and cast up to the Top proper :! First Man change Places with 2d Wo. first Wo. and 2d Man do the same, first Cu. dance across with the 3d Cu. and turn all four single !. The first and 2d Cu. change Places with your Partners, the first Cu. slip Outside to the Top, all four dance across, the first Cu. cast off !:

## Sir Foplin's Airs. PFD2.330



Longways for as many as will.

Note: Each Strain is to be play'd twice over.

First Man opens his snuff-box, then the Tune begins, he offers his Box, his Partner takes a Pinch first, then he, and snuffs, then closes his Box, gives it two Taps, and both dance carelessly. | First and 2d Men toss the right, then left Knot of their Wigs, then clap their right, then left Hand on their Sides, the We. do the same at the same Time, only they smooth their Hair with their right and left Hands, dance carelessly and turn single. :| First Man lead his Partner on the Outside below the 2d Man, and turn the 3d Cu. l. Then Right and Left with the 2d Cu. then all four dance carelessly, the f[i]rst Cu. cast off |: Observe, after the first Cu. dance below the 2d Cu. instead of making use of your Snuff-box, you must Figure thro' the 2d Cu. and turn in at the Top Proper.

## The Charmer. PFD2.331



Longways for as many as will.

Note: Each Strain is to be play'd twice over.

First Man go the Hey with the two first We. :| Then take Hands across with the 2d Cu. and go half round, and back again :| The first Cu. go the whole Figure Sides with the 2d and 3d Cu. :| Sett Sides with the 2d Cu. then first and 2d Men take their Partners by the Right Hand, then each clap their Hand on their Side next their Heart, then the first Cu. turn down the Middle, into the 2d Cu. Plcea Proper :|

## Melecinda the Pretty. PFD2.332

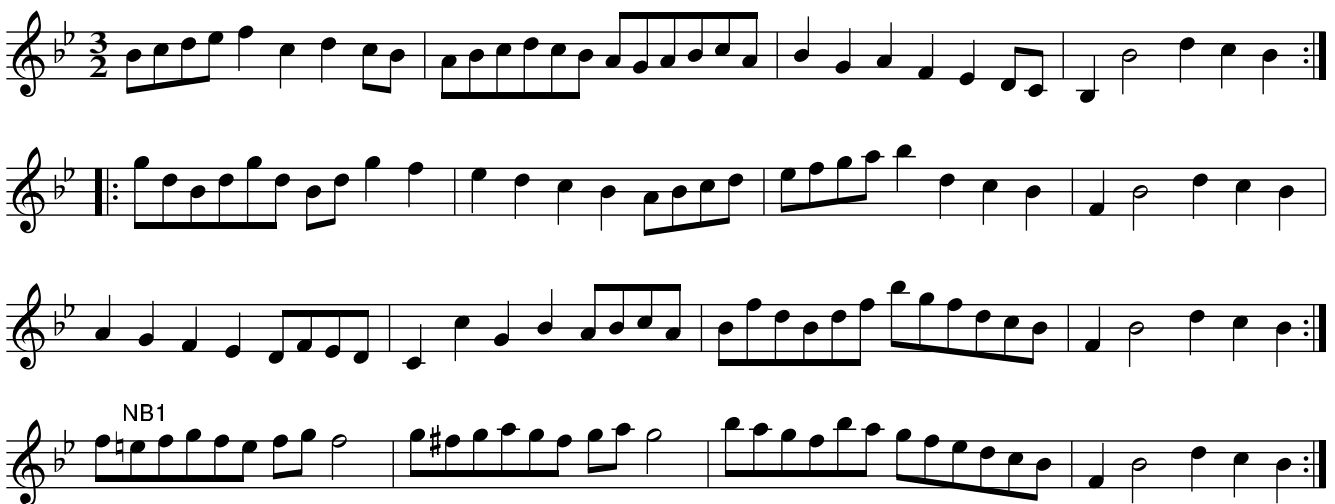


Longways for as many as will.

Note: The first Strain twice and the last but once over.

First Cu. Sett across to the 2d Cu. then cast off, the first Man change Place with the 3d Wo. and the first Wo. with the 3d Man .! Then take Hands with the 3d Cu. and go half round, then first Cu. cast up to the Top :! Fall back Sides, and change Places with your Partners, then Right Hands and Left, Sides half round, the 2d Man and Wo. take the first Man and first Wo. and lead them quite round, then first Cu. lead thro' the 3d Cu. and cast up into the 2d Cu. Place, Proper !:

## Mr Johnson's Humour. PFD2.333



Longways for as many as will.

Note: Each Strain is to be play'd twice over.

All the Company dance round and turn single .l Then back again and turn :l

Change Places with your Partners, all stamp twice, and turn single l.

The same back again l: Then first and 2d Cu. take Hands abreast, and meet the 3d and 4th Cu. who does the like; Sett and change Places .l

The same back again l: Right Hands and Left half round, with the 2d Cu. all dance, and turn single .l Then half round forwards, and Sett dancing, the first Cu. cast off l:

## The Rover Secur'd. PFD2.334



Longways for as many as will.

Note: Each Strain is to be play'd twice over.

First Man take the 2d Wo. by her lef[t] Hand, lead her up to the Top, and turn right Hands half round, into each others Places; the first Wo. and 2d Man turn, at the same Time half round .l Then fall back Sides, turn S. Partners change Places :l Then first Man cast off below the 3d Man, and slip up the Middle to his Place; first Wo. follow him below the 2d Man at the same Time, and go above the 2d Wo. to her Place, then take right and left Hands across, Foot it and turn single l. First Wo. take the 2d by her left Hand, then 2d Cu. take Hands, then first Wo. and 2d man joyn Hands round the first Man, and go qui[t]e round him, then first Cu. turn in the 2d Cu. Place Proper l:

## Young Damon's Flight. PFD2.335



Longways for as many as will.

Note: Each Strain is to be play'd twice over.

First Man take the 2d by his left Hand and lead him half round, then all four take Hands and go half round .! The first and 2d We. do the same :! Then first Cu. Sett and cross over, the Man below the 3d Cu. and the Wo. above the 2d Cu. and go the Hey with the 2d and 3d Cu. !. Then the first Cu. fall back, the first Man cast up, his Partner cast off at the same Time, then first Man Figure thro' the 2d Cu. his Partner at the same Time Figure thro' the 3d Cu. and turn in the 2d Cu. Place Proper !:

## The Compleat Britain. PFD2.336



Longways for as many as will.

Note: Each Strain is to be play'd twice over.

First Man fall back two Steps, cast off, Sett two Steps to the 3d Wo.  
and one to the 3d Man, and go above the 2d Man to his Place .! The 2d  
Wo. do the same :! Then first and 2d Man change Places with their  
Partners, and change Sides, then round back again to your Places,  
clap Hands twice, Sides once with your Partners, the first and 2d We.  
clap each their Partners, then first Cu. cast off !. The first Cu.  
do the same with the 3d Cu. only instead of casting off, turn single !:



Frisky Jenny, or... PFD2.337  
The Tenth of June. PFD2.337



Longways for as many as will.

Note: Each Strain is to be play'd twice.

The first Cu. clap and cast off .| Then clap and cast up :| The first Man goes off the Outside the 3d Wo. and the first Wo. off the Inside the 2d Wo. at the same Time, the first man cast up behind the 3d Man, and the first Wo. cast off behind the 2d Wo. at the same Time |. The Right and Left with the 2d Cu. quite round, and turn your Partner |:

She wou'd if she cou'd. PFD2.338



Longways for as many as will.

Note: Each Strain is to be play'd twice over.

The first Man whole Figure on his own Side, the first Wo. on her Side at the same Time .| Then first Man lead his Partner quite thro' the Bottom, and cast up to the Top, and lead into the 2d Cu. Place :| Then change Places with the 3d Cu. all four quite round, and cast off and lead up quite round thro' the Top and cast off |. Then Right and Left quite round at Top, and turn your Partners |:

## The Old Maid in Tears. PFD2.339



Longways for as many as will.

Note: Each Strain is to be play'd twice over.

The first Wo. holds her Handkerchief to her Face, and goes on the Outside, below the 3d Wo. and comes up the Middle to her Place; first Man follows her (at the same Time pointing and Smiling at her) up to his Place .!

First Man do the same, only he beckons his Wo. to him :! First Wo. makes a motion of drying first one Eye, then the other, and clap her Hands one after another on her Sides, (the first man looks surprizingly at her at the same Time) and tuen her Partner l. First Cu. move with two slow Steps down the Middle and back again: the first Cu. Sett and cast off l:

## Last Disappointment. PFD2.340



Longways for as many as will.

Note: Each Strain twice over.

The first and 2d Men Set to their Partners and turn single, and turn sides .l  
Then Set all four and turn single, and turn Partners l: Change Places, all  
four quite round, cast off, and whole Figure with the 3d Cu. Right and Left  
quite round with the 2d Cu. l. Then cast off below the 3d Cu. and lead  
quite thro' the Top and cast off, Right and Left with the 3d Cu. quite  
round, then take your Partner by both Hands, and draw quite round  
the 3d Cu. round the 2d Cu. and turn your Partner l:

## Cook's Humour. PFD2.341



Longways for as many as will.

Note: Each Strain is to be Play'd twice over.

The first Man cast off, and the 2d Wo. cast up, and half Figure .l The 2d Man and first Wo.  
do the same :l Fall Back Sides, and lead into their Places, then Back to Back Sides, and Back  
to Back Partners .l Then Right and Left quite round, and turn your Partner :l

## Fiddle–de–dee. PFD2.342



Longways for as many as will.

Note: Each Strain is to be Play'd twice over.

First Cu. turn single, lead thro' the 2d Cu. and cast off :| First Man turns the 2d Wo. then his Partner twice round, First Wo. turns the 2d Man at the same Time :| Then cast up at Top, half Figure, and stand at Top :| First Man turn the 2d Man with his Right–hand, and his Partner with his Left, Jigg it, and cast off :| The Man Hey at Bottom, and the Wo. at Top, and stand in the 2d Cu. Place :| Right and Left quite round at Top, and turn your Partner :|

## Second Thought's best. PFD2.343



Longways for as many as will.

Note: Each Strain is to be Play'd twice over.

First Man and 2d Wo. clap Hands and turn single :| The 2d Man and first Wo. do the same :| Then the first Cu. go the whole Figure thro' the 2d Cu. :| Then Back to Back, and Right and Left into the 2d Cu. Place :|

## A trip to the Boar. PFD2.344



Longways for as many as will.

Note: The first Strain twice over, and the last but once.

The first and 2d Cu. Sett all four and turn single, and turn sides :! Then Sett all four again and turn single, and turn Partners :! The first Man change Places with the 2d Wo. and the first Wo. with the 2d Man, the 2d Cu. stand Improper, and the first Cu. lead thro' the 3d Cu. Right and Left with the 2d Cu. quite round :! Then cast off below the 3d Cu. and half Figure with the 2d Cu. and Right and Left with the 3d Cu. quite round, and turn your Partner :!

## Merry Milk-Maids. PFD2.345



Longways for as many as will.

First Man Sett to the 2d Wo. and turn single, then turn her :! First Wo. the same :! Cross over and whole Figure with the 2d Cu. :! Right and Left quite round, and turn your Partner in the 2d Cu. Place :! First Man F with the 3d Cu. and his Partner with the 2d :! First Wo. Hey with the 3d Cu. and the Man with the 2d :! First Cu. cross over quite round the 3d Cu. into the 2d Cu. Place :! Then cast up to the Top, and Right and Left ha round and turn :! Note : Each Strain twice over.

## General Webb's March. PFD2.346



Longways for as many as will.

Note: Each Strain is to be play'd twice over.

The first Man turn the 2d Wo. then his Partner .! First Wo. do the same :! Then cross over and half Figure with the 2d Cu. then fall back sides and turn in the 2d Cu. Place .! The first Wo. change Place with the 2d Man, and the first Man with the 2d Wo. and Right Hands and Left quite round, and turn you Partner :!

## Wallpoole, or... PFD2.347

Happy Clown., The PFD2.347



Longways for as many as will.

Note: The first Strain is to be play'd twice, and the last but once.

First Man and 2d Wo. whole Figure round their Partners into their own Places .! First Wo. and 2d Man whole Figure round their Partners into their Places :! First Man change with the 2d Wo. and the first Wo. change with the 2d Man at the same Time quite round, and cast off and lead thro' the 3d Cu. then draw your Partner round the 3d Cu. and up round the 2d Cu. and cast off, and turn your Partner .!

## Merry Conceit. PFD2.348



Longways for as many as will.

Note: The first Strain twice, and the last but once.

The first Man take his Wo. by the Left Hand, and lead her round him down the Middle, and Figure thro' the 3d Cu. ! The 2d Cu. do the same :! Then all four Hands half round, the first Cu. go between the 3d Cu. and cast up, then Hands back again with the 2d Cu. then the first Cu. Sett and cast off .!

## White heart Cabages, or... PFD2.349

Easter Tuesday. PFD2.349



Longways for as many as will.

Note: The first Strain twice, and the last but once over.

The first Couple clap, and cast off below the second Couple .! Then clap and cast up to the Top :! Then cross over and Figure with the second Couple and cast off, and Right and Left quite round, and lead through the third Couple and turn your Partner .!

## Hamsted Heath. PFD2.350



Longways for as many as will.

Note: Each Strain is to be play'd twice over.

The first Cu. lead down to the 4th Cu. the first Man turn the 4th Wo. and the first Wo. turn the 4th Man with her Right-hand and her Partner with her Left. ! Then turn the 3d Cu. and your Partners as before; then the 2d Cu. then your Partner :! Then cross over every Cu. below the 4th. and take your Partner by both Hands, and draw quite round every Cu. 'till you come to the Top. ! Change Places with the 2d Cu. and cast off, Right and Left quite round, and turn your Partner :!

## A Trip to Kilburn. PFD2.351



Longways for as many as will.

Note: Each Strain is to be play'd twice over.

First Cu. cast off, and Hands round with the 3d Cu. and lead thro' the 3d Cu. ! Hands round with the 2d Cu. and lead thro' the 2d Cu. :! Hands all fix quite round, and stand in the 2d Cu. Place. ! Then Right and Left quite round with the 2d Cu. and turn your Partner :!



## French Peasant, and the Jigg. PFD2.352



Longways for as many as will.

Note: Each Strain is to be play'd twice over.

First Cu. cast off, and Hands all four round with the 3d Cu. and lead thro' the 3d Cu. ! Hands round, with the 3d Cu. and lead thro' the 2d Cu. ! The 2d Cu. cross over and half Figure with the first Cu. and turn ! The first Cu. cross over and half Figure with the 2d Cu. and turn ! The first Cu. Jigg it and cast up, and Jigg it and cast off. The first Man Heys with the 3d Cu. and the first Wo. Hey with the 2d Cu. at the same Time, and Right and Left with the 2d Cu. quite round, and turn your Partner !

## Shoomaker Row. PFD2.353



Longways for as many as will.

Note: Each Strain is to be Play'd twice over.

The first Man Sett to the 2d Wo. and turn single, and turn his Partner ! The first Wo. Sett to the 2d Man, then turn single, and turn her Partner : The first Cu. whole Figure with the 2d Cu. and clap and cast off ! The first Man change Places with the 2d Wo, and the first Wo. with the 2d Man, and Hands all four half round and turn single all four !

## Richmond Hill. PFD2.354



Longways for as many as will.

Note: Each Strain is to be play'd twice over.

First Man turn the 2d Wo. with his Right Hand .! Then first Wo. turn the 2d Man with her Left :! Then first Man Heys on the Wos. Side, and the first Wo. on the Mans at the same Time, then Hey on their own Sides, and the first Man turns his Partner at Top .! Then first Cu. cross over and half Figure at Top, and lead thro' the 3d Cu. and thro' the Top, and Right and Left with the 2d Cu. quite round and turn your Partner :!

## Blundel's Maggot. PFD2.355



Longways for as many as will.

Note: Each Strain is to be play'd twice over.

The first Cu. cast off, the first Man fall in between the 2d and 3d Men, the first Wo. fall in between the 2d and 3d We. at the same Time .! The first Man go Inside the 3d Wo. the first Wo. go Outside the 2d Man at the same Time :! The first Man cast up behind the 3d Man, and the first Wo. cast off behind the second Wo. at the same Time .! Then cross over quite round the 3d Cu. and lead thro' the 2d Cu. and Right and Left quite round with the 2d Cu. and turn your Partner :!

## The Friendship. PFD2.356



Longways for as many as will.

Note: Each Strain is to be play'd twice.

First Cu. clap and cast off, Hands half round with the 3d Cu. first and 3d Men turn their Partners into their Proper Places. | First Cu. clap and cast up, Hands half round with the 2d Cu. and turn in their Proper Places :| First Man go outside the 3d Man, first Wo. go inside the 2d Wo. at the same Time; first Man cast up behind the 3d Man, first Wo. cast off behind the 2d Wo. at the same Time, Right and Left quite round with the 2d Cu. | First Man go outside the 2d Wo. first Wo. go outside the 3d Man, the first Man cast off, the first Wo. cast up at the same Time, and turn Partners :|

## Generous Conquest. PFD2.357



Longways for as many as will.

Note: Each Strain is to be play'd twice over.

The first Man Sett to the 3d Wo. cast above the 2d Man, and turn his Partner. | The first Wo. do the same :| The first Man take his Partner by both Hands, dance down the Middle, turn her half round, cross over below the 3d Cu. meet two Steps forward, and turn single. | The first Man cast above the 3d Man, and go Outside the 2d Wo. to his Place, the first Wo. follow him at the same Time, to her Place, both Sett two Steps forward and cast off :|

## The Old Cibell. PFD2.358



Longways for as many as will.

The first Cu. clap and cast off, then lead thro' the 3d Cu. and Right and Left half round at Top, and turn your Partner, then\* cross over below the 2d and 3d Cu. and lead quite thro' at Top, and turn single, then first Man the Figure of the outside the 3d Wo. his Partner cross the Figure of the outside the 2d Man at the same Time, both cast into the 2d Cu. Place; the first Man cross of the outside the 2d Wo. and the first Wo. of the outside Man at the same Time, and both\* cast off into the 2d Cu. Place, and turn your Partner. Play the Tune quite t

## King George's March, and the Jigg. PFD2.359



Longways for as many as will.

Note: Each Strain is to be play'd twice over.

The first and 2d Men lead thro' the We. and Hands half round .! The We. lead thro' the Men and Hands half round :! First Man change Places with the 2d Wo. and the first Wo. change Places with the 2d Man, and lead thro' the 3d Cu. and Right and Left quite round with the 2d Cu. [the Jigg] the first and 2d Cu Hands across q round and turn all single, then Hands across bach and turn S. .! First Man and first Wo. Back to Back, and le the 3d Cu. and thro' the 2d Cu. and Right and Left quite round with the 2d Cu. and turn your Partner :!

## Sally's Fancy. PFD2.360



Longways for as many as will.

Note: Each Strain is to be play'd twice over.

The two first Men whole Figure round their Partners, then the first Man lead his Partner thro' the 2d Cu. .! The two first Wo. Figure round the Men, and the first Wo. lead her Partner thro' :!  
 The first Man Sett to the 2d Wo. and turn single, the first Wo. Sett to the 2d Man, then first Cu. cast off .! The first Man takes his Partner by both Hands, and draws her quite round the 3d Cu. and round the 2d Cu. :!

FINIS.