

The Hessian Dance. JJo8.001
The Swab. JJo8.001

Musical score for 'The Hessian Dance' and 'The Swab'. It consists of four staves of music in 3/8 time, key of D major. The first staff is the main melody. The second and third staves are accompaniment, featuring a rhythmic pattern of eighth and sixteenth notes. The fourth staff is a second ending or variation, ending with a fermata.

Arne's Maggot. JJo8.002
Arne's Jig, aka. JJo8.002

Musical score for 'Arne's Maggot' and 'Arne's Jig'. It consists of four staves of music in 6/8 time, key of D major. The first staff is the main melody. The second, third, and fourth staves are accompaniment, featuring a rhythmic pattern of eighth and sixteenth notes. Trills (tr) are indicated above several notes in the second, third, and fourth staves.

The Life of the Cause. JJo8.003

Musical score for 'The Life of the Cause'. It consists of two staves of music in 6/8 time, key of D major. The first staff is the main melody. The second staff is accompaniment, featuring a rhythmic pattern of eighth and sixteenth notes. A trill (tr) is indicated above a note in the second staff.

The Distiller. JJo8.003

Musical score for "The Distiller" in 2/4 time. The score consists of four staves of music. The first staff begins with a repeat sign. The second staff ends with a double bar line and repeat dots. The third staff includes a trill marking (*tr*) above a note. The fourth staff ends with a double bar line and repeat dots.

Weldon's Maggot. JJo8.005
Buddy MacMaster's Traditional Jig, aka. JJo8.005

Musical score for "Weldon's Maggot" in 6/8 time. The score consists of four staves of music. The first staff begins with a key signature of one sharp (F#) and a 6/8 time signature. The second staff ends with a double bar line and repeat dots. The third staff begins with a repeat sign. The fourth staff ends with a double bar line and repeat dots.

The Green Man. JJo8.006

Musical score for 'The Green Man' (JJo8.006). The score is written in treble clef with a key signature of one sharp (F#) and a common time signature (C). It consists of four staves of music. The first staff begins with a treble clef, a key signature of one sharp, and a common time signature. The music features a series of eighth and sixteenth notes, with some beamed eighth notes. The second staff continues the melody with similar rhythmic patterns. The third staff begins with a repeat sign (double bar line with two dots) and continues the melody. The fourth staff concludes the piece with a final cadence and a double bar line.

Strike home ye Britons. JJo8.007

Musical score for 'Strike home ye Britons' (JJo8.007). The score is written in treble clef with a key signature of one sharp (F#) and a common time signature (C). It consists of two staves of music. The first staff begins with a treble clef, a key signature of one sharp, and a common time signature. The music features a series of eighth and sixteenth notes, with some beamed eighth notes. The second staff continues the melody with similar rhythmic patterns and concludes with a double bar line.

Nanny's Choice. JJo8.008

Musical score for 'Nanny's Choice' (JJo8.008). The score is written in treble clef with a key signature of two sharps (F# and C#) and a common time signature (C). It consists of four staves of music. The first staff begins with a treble clef, a key signature of two sharps, and a common time signature. The music features a series of eighth and sixteenth notes, with some beamed eighth notes. The second staff continues the melody with similar rhythmic patterns. The third staff begins with a repeat sign (double bar line with two dots) and continues the melody, including a triplet of eighth notes. The fourth staff concludes the piece with a final cadence and a double bar line.

The Office of Ordnance. JJo8.009

Musical score for 'The Office of Ordnance' (JJo8.009). The score is written in treble clef with a key signature of two sharps (F# and C#) and a common time signature (C). It consists of three staves of music. The first staff begins with a repeat sign and contains a series of eighth and sixteenth notes. The second and third staves continue the melody with similar rhythmic patterns, ending with repeat signs.

The Lilly. JJo8.010

Musical score for 'The Lilly' (JJo8.010). The score is written in treble clef with a key signature of two sharps (F# and C#) and a common time signature (C). It consists of three staves of music. The first staff begins with a repeat sign and contains a series of eighth and sixteenth notes. The second and third staves continue the melody with similar rhythmic patterns, ending with repeat signs.

Miss Sparks's Maggot. JJo8.011

Musical score for 'Miss Sparks's Maggot' (JJo8.011). The score is written in treble clef with a key signature of one sharp (F#) and a 6/8 time signature. It consists of four staves of music. The first staff begins with a repeat sign and contains a series of eighth and sixteenth notes. The second and third staves continue the melody with similar rhythmic patterns. The fourth staff concludes the piece with a final note and a repeat sign.

The Riddle. JJo8.012

Musical score for 'The Riddle' (JJo8.012). The piece is in G major (one sharp) and common time. It consists of two staves. The first staff begins with a repeat sign and contains two triplet markings over the first two measures. The melody is characterized by eighth and sixteenth notes.

Capt' Jolly. JJo8.013

Musical score for 'Capt' Jolly' (JJo8.013). The piece is in B-flat major (two flats) and 6/8 time. It consists of two staves. The melody features dotted rhythms and eighth-note patterns.

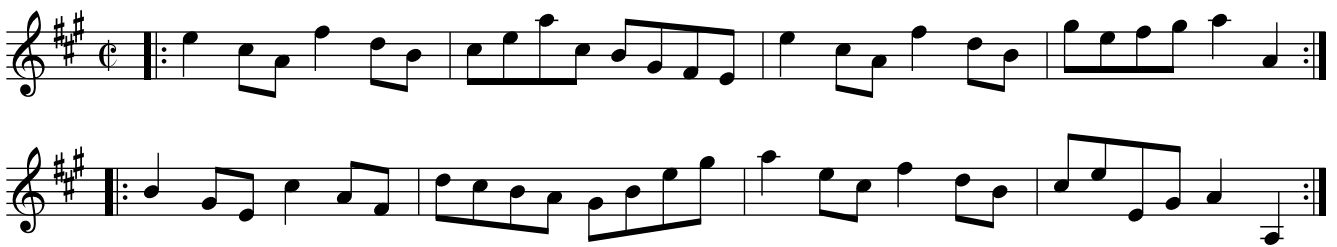
Nelson's Maggot. JJo8.014

Musical score for 'Nelson's Maggot' (JJo8.014). The piece is in B-flat major (two flats) and common time. It consists of three staves. The music is primarily composed of eighth and sixteenth notes with some triplet-like groupings.

Old Glanville. JJo8.015

Musical score for 'Old Glanville' (JJo8.015). The piece is in G major (one sharp) and 6/8 time. It consists of two staves. The melody is active, featuring many eighth and sixteenth notes.

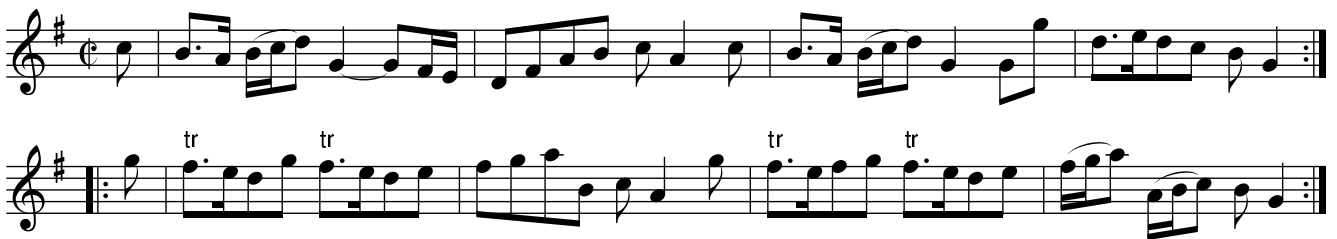
The Folly of Youth. JJo8.016



The Palatine Lass. JJo8.017



The Lasses of Lynn. JJo8.018



Capt' Catton's Maggot. JJo8.019



The Crab Tree. JJo8.020

Musical score for 'The Crab Tree' in G major, 6/8 time. It consists of two staves. The first staff begins with a repeat sign and contains a melody of eighth and sixteenth notes. The second staff provides a rhythmic accompaniment with eighth and sixteenth notes.

The Jemmy Lass. JJo8.021

Musical score for 'The Jemmy Lass' in A major, common time. It consists of two staves. The first staff features a melody with many beamed eighth and sixteenth notes. The second staff provides a rhythmic accompaniment with similar beamed notes.

Phoebe's Delight. JJo8.022

Musical score for 'Phoebe's Delight' in A major, 6/8 time. It consists of four staves. The first and third staves contain the melody, while the second and fourth staves provide the accompaniment. The melody is characterized by eighth and sixteenth notes with some grace notes.

A Trip to Epping. JJo8.023

Musical score for 'A Trip to Epping' in B-flat major, 6/8 time. It consists of two staves. The first staff contains the melody, which includes a trill (tr) on the final note. The second staff provides the accompaniment, also featuring a trill (tr) on the final note.

Nothing Like a Good Thing. JJo8.024

Musical score for 'Nothing Like a Good Thing. JJo8.024'. The score is written in treble clef with a key signature of two sharps (F# and C#) and a 3/8 time signature. It consists of two staves. The first staff contains the melody, starting with a repeat sign and ending with a double bar line. The second staff contains the accompaniment, also starting with a repeat sign and ending with a double bar line. Trills are indicated by 'tr' above the notes in the second staff.

Lads Come Follow Me. JJo8.025

Musical score for 'Lads Come Follow Me. JJo8.025'. The score is written in treble clef with a key signature of one sharp (F#) and a 6/8 time signature. It consists of three staves. The first staff contains the melody, starting with a repeat sign and ending with a double bar line. The second and third staves contain the accompaniment, also starting with a repeat sign and ending with a double bar line.

Now or Never. JJo8.026

Musical score for 'Now or Never. JJo8.026'. The score is written in treble clef with a key signature of two sharps (F# and C#) and a 3/8 time signature. It consists of four staves. The first staff contains the melody, starting with a repeat sign and ending with a double bar line. The second, third, and fourth staves contain the accompaniment, also starting with a repeat sign and ending with a double bar line.

The Shepherd and Shepherdess. JJo8.027

Musical score for 'The Shepherd and Shepherdess' in G major (one sharp) and 2/4 time. It consists of three staves of music. The first staff begins with a treble clef, a key signature of one sharp (F#), and a 2/4 time signature. The music features a mix of eighth and sixteenth notes, with some slurs and ties. The second and third staves continue the melody and accompaniment, ending with double bar lines and repeat dots.

Scotch Jenny. JJo8.028

Musical score for 'Scotch Jenny' in G major (one sharp) and common time (C). It consists of two staves of music. The first staff begins with a treble clef, a key signature of one sharp (F#), and a common time signature. The music features a mix of eighth and sixteenth notes, with a trill (tr) indicated above a note in the first staff. The second staff continues the melody and accompaniment, ending with double bar lines and repeat dots.

The Primrose. JJo8.029

Musical score for 'The Primrose' in G major (one sharp) and 6/8 time. It consists of four staves of music. The first staff begins with a treble clef, a key signature of one sharp (F#), and a 6/8 time signature. The music features a mix of eighth and sixteenth notes, with a trill (tr) indicated above a note in the first staff. The second, third, and fourth staves continue the melody and accompaniment, ending with double bar lines and repeat dots.

Nanny's Whim. JJo8.030

Musical score for 'Nanny's Whim' in G major (one sharp) and 2/4 time. It consists of two staves of music. The first staff begins with a treble clef, a key signature of one sharp (F#), and a 2/4 time signature. The music features a mix of eighth and sixteenth notes, with a trill (tr) indicated above a note in the first staff. The second staff continues the melody and accompaniment, ending with double bar lines and repeat dots.

Doctors Commons. JJo8.031

Musical score for 'Doctors Commons. JJo8.031'. The score consists of four staves of music in G minor (one flat) and 6/8 time. The first staff begins with a repeat sign. The melody is primarily eighth and sixteenth notes, with some quarter notes. The piece concludes with a double bar line and repeat dots.

The Virgin's Wish. JJo8.032

Musical score for 'The Virgin's Wish. JJo8.032'. The score consists of two staves of music in G major (one sharp) and 6/8 time. The first staff begins with a repeat sign. The melody features dotted rhythms and eighth notes. The piece concludes with a double bar line and repeat dots.

The Golden Cross. JJo8.033

Musical score for 'The Golden Cross. JJo8.033'. The score consists of five staves of music in G minor (one flat) and 6/8 time. The first staff begins with a repeat sign and includes trills (tr) over several notes. The melody is characterized by eighth and sixteenth notes. The piece concludes with a double bar line and repeat dots.

Chalkhill Hall. JJo8.034

Two staves of musical notation in treble clef, key of D major (two sharps), and common time (C). The first staff begins with a repeat sign and contains a series of eighth and sixteenth notes. The second staff continues the melody with similar rhythmic patterns and includes a trill (tr) at the end.

Alterations. JJo8.035

Two staves of musical notation in treble clef, key of D major (two sharps), and 2/4 time. The first staff starts with a repeat sign and features a mix of eighth and sixteenth notes, ending with a trill (tr). The second staff continues the piece with similar rhythmic complexity.

Walton Bridge. JJo8.036

Two staves of musical notation in treble clef, key of D major (two sharps), and common time (C). The first staff begins with a repeat sign and consists of eighth and sixteenth notes. The second staff continues the melody and includes a trill (tr) near the end.

Jack's Whim. JJo8.037

Four staves of musical notation in treble clef, key of D major (two sharps), and 6/8 time. The first staff starts with a repeat sign and features a mix of eighth and sixteenth notes. The subsequent staves continue the melody with similar rhythmic patterns.

Maddox's Delight. JJo8.038



Musical score for Maddox's Delight, JJo8.038. The piece is in G major (one sharp) and 6/8 time. It consists of four staves of music. The first staff begins with a treble clef and a key signature of one sharp. The melody is written in a single line. The second staff continues the melody with a repeat sign at the end. The third staff begins with a repeat sign and continues the melody. The fourth staff concludes the piece with a repeat sign.

The Syngogue. JJo8.039



Musical score for The Syngogue, JJo8.039. The piece is in G major (one sharp) and 2/4 time. It consists of four staves of music. The first staff begins with a treble clef and a key signature of one sharp. The melody is written in a single line. The second staff continues the melody with a repeat sign at the end. The third staff begins with a repeat sign and continues the melody. The fourth staff concludes the piece with a repeat sign.

Plumb Pudding. JJo8.040



Musical score for Plumb Pudding, JJo8.040. The piece is in B-flat major (two flats) and 2/4 time. It consists of two staves of music. The first staff begins with a treble clef and a key signature of two flats. The melody is written in a single line. The second staff continues the melody with a repeat sign at the end. The piece features several triplet markings (indicated by a '3' below the notes) throughout the melody.

Sir Charles Grandison. JJo8. 041
The Willing Maid. JJo8.041

Two staves of musical notation in G major (one sharp) and 2/4 time. The first staff begins with a repeat sign and contains a melody of eighth and sixteenth notes. The second staff continues the melody with similar rhythmic patterns.

Lady Doll St. Clair's Reel. JJo8.042

Three staves of musical notation in D major (two sharps) and 2/4 time. The first staff is the main melody. The second and third staves provide accompaniment, with the second staff featuring a first ending bracket and the third staff a second ending bracket.

The First of January. JJo8.043

Three staves of musical notation in G major (one sharp) and 2/4 time. The first staff is the main melody. The second and third staves provide accompaniment, with the third staff featuring triplets marked with the number '3'.

Namptwich Fair. JJo8.044

Two staves of musical notation in E-flat major (two flats) and 3/8 time. The first staff begins with a repeat sign and contains the main melody. The second staff provides accompaniment. A note in the first staff is marked with a sharp sign.

Only one flat in book, but E note flattened

The Pride of Scotland. JJo8.045

Musical score for 'The Pride of Scotland' (JJo8.045). The piece is in G major and common time. It consists of three staves of music. The first staff begins with a treble clef, a key signature of one sharp (F#), and a common time signature. The melody is written in a single line. The second and third staves continue the melody, with the second staff starting with a repeat sign. The piece concludes with a double bar line and repeat dots.

Parker's Whim. JJo8.046

Musical score for 'Parker's Whim' (JJo8.046). The piece is in G major and common time. It consists of two staves of music. The first staff begins with a treble clef, a key signature of one sharp (F#), and a common time signature. The melody is written in a single line. The second staff continues the melody, starting with a repeat sign. The piece concludes with a double bar line and repeat dots.

Will Rogers. JJo8.047

Musical score for 'Will Rogers' (JJo8.047). The piece is in G major and 2/4 time. It consists of two staves of music. The first staff begins with a treble clef, a key signature of one sharp (F#), and a 2/4 time signature. The melody is written in a single line. The second staff continues the melody, starting with a repeat sign. The piece concludes with a double bar line and repeat dots. There are triplets indicated by a '3' over the notes in both staves.

A Trip to Ingestree. JJo8.048

Musical score for 'A Trip to Ingestree' (JJo8.048). The piece is in G major and 9/8 time. It consists of two staves of music. The first staff begins with a treble clef, a key signature of one sharp (F#), and a 9/8 time signature. The melody is written in a single line. The second staff continues the melody, starting with a repeat sign. The piece concludes with a double bar line and repeat dots.

Lady Coventry's Delight. JJo8.049

Musical score for "Lady Coventry's Delight. JJo8.049". The score is written in treble clef with a key signature of one sharp (F#) and a time signature of 6/8. It consists of four staves of music. The first staff begins with a repeat sign. The melody is characterized by eighth and sixteenth notes, with some slurs and ties. The piece concludes with a double bar line and repeat dots.

The Intrepid. JJo8.050

The Lass and the Money is All My Own, aka. JJo8.050

Musical score for "The Intrepid. JJo8.050". The score is written in treble clef with a key signature of two sharps (F# and C#) and a time signature of 6/8. It consists of four staves of music. The first staff begins with a repeat sign. The melody features a mix of eighth and sixteenth notes, with some slurs and ties. The piece concludes with a double bar line and repeat dots.

Betty Blue. JJo8.051

Musical notation for 'Betty Blue. JJo8.051' consisting of four staves of music in treble clef, key of D major, and common time. The first staff begins with a repeat sign. The melody is characterized by eighth and quarter notes, with some dotted rhythms.

The Demeple. JJo8.052
The Dimple, aka JJo8.052

Musical notation for 'The Demeple. JJo8.052' consisting of two staves of music in treble clef, key of D major, and common time. The first staff begins with a repeat sign. The melody features a mix of eighth and quarter notes.

The Grand Parade. JJo8.053

Musical notation for 'The Grand Parade. JJo8.053' consisting of four staves of music in treble clef, key of D major, and 6/8 time. The first staff begins with a repeat sign. The melody is primarily composed of eighth notes.

Abel Drugger. JJo8.054



Musical score for Abel Drugger, JJo8.054. The score is written in treble clef, key of D major (one sharp), and common time (C). It consists of three staves. The first staff begins with a repeat sign and contains a series of eighth and sixteenth notes. The second staff continues the melody with similar rhythmic patterns. The third staff features trills (tr) over the first and fifth notes of the first measure.

Miss Nancy's Delight. JJo8.055



Musical score for Miss Nancy's Delight, JJo8.055. The score is written in treble clef, key of B-flat major (two flats), and 3/8 time. It consists of four staves. The first staff begins with a repeat sign and contains a series of eighth and sixteenth notes. The second staff continues the melody with similar rhythmic patterns. The third staff features a trill (tr) over the first note of the first measure. The fourth staff continues the melody with similar rhythmic patterns.

Charming Sally. JJo8.056



Musical score for Charming Sally, JJo8.056. The score is written in treble clef, key of D major (two sharps), and 2/4 time. It consists of two staves. The first staff begins with a repeat sign and contains a series of eighth and sixteenth notes. The second staff continues the melody with similar rhythmic patterns, including a triplet (3) over the first three notes of the first measure.

Sailors Dance. JJo8.057
Fair Quaker of Deal. JJo8.057

Two staves of musical notation in G major and 2/4 time. The first staff contains the melody for 'Sailors Dance', featuring a series of eighth and sixteenth notes. The second staff contains the melody for 'Fair Quaker of Deal', which includes trills (tr) in the final measures.

Miss Longs for it. JJo8.058

Four staves of musical notation in B-flat major and 3/4 time. The first staff begins with a triplet of eighth notes. The second and third staves contain the main melody, with the third staff also featuring a triplet. The fourth staff provides a bass line accompaniment.

King of Prussia's Tamborine. JJo8.059

Three staves of musical notation in A major and 2/4 time. The first staff contains the melody, which is characterized by a rhythmic pattern of eighth and sixteenth notes. The second and third staves provide a bass line accompaniment.

King of Prussia's Tamborine (2nd Part). JJo8.060

Musical score for 'King of Prussia's Tamborine (2nd Part)'. It consists of three staves of music in G major (one sharp) and 2/4 time. The first staff begins with a treble clef and a key signature of one sharp. The second staff starts with a repeat sign. The third staff concludes with a double bar line and repeat dots.

Trip to the Camps. JJo8.061

Musical score for 'Trip to the Camps'. It consists of four staves of music in G major (one sharp) and 3/8 time. The first staff begins with a treble clef and a key signature of one sharp. The second and third staves start with a repeat sign. The fourth staff concludes with a double bar line and repeat dots.

Ludlow Races. JJo8.062

Musical score for 'Ludlow Races'. It consists of three staves of music in B-flat major (two flats) and common time (C). The first staff begins with a treble clef and a key signature of two flats. The second and third staves start with a repeat sign. The third staff concludes with a double bar line and repeat dots.

Banks of Tay. JJo8.063

Musical notation for 'Banks of Tay. JJo8.063'. It consists of four staves of music in treble clef, key of D major (two sharps), and common time (C). The melody is written on the first staff, and the accompaniment is on the second, third, and fourth staves. The piece features a mix of quarter, eighth, and sixteenth notes, with some rests and a repeat sign in the second staff.

Severn Banks. JJo8.064

Musical notation for 'Severn Banks. JJo8.064'. It consists of two staves of music in treble clef, key of D major (two sharps), and common time (C). The melody is written on the first staff, and the accompaniment is on the second staff. The piece features a mix of quarter, eighth, and sixteenth notes, with some rests and repeat signs.

The Jews Harp. JJo8.065

Musical notation for 'The Jews Harp. JJo8.065'. It consists of two staves of music in treble clef, key of D major (two sharps), and common time (C). The melody is written on the first staff, and the accompaniment is on the second staff. The piece features a mix of quarter, eighth, and sixteenth notes, with some rests and a trill (tr.) in the second staff.

Northern Frisk. JJo8.066

Musical notation for 'Northern Frisk. JJo8.066'. It consists of three staves of music in treble clef, key of D major (two sharps), and common time (C). The melody is written on the first staff, and the accompaniment is on the second and third staves. The piece features a mix of quarter, eighth, and sixteenth notes, with some rests and repeat signs.

Trip to Sligo. JJo8.067

Musical notation for 'Trip to Sligo. JJo8.067'. The piece is in G major and 6/8 time. It consists of four staves of music. The first staff begins with a treble clef, a key signature of one sharp (F#), and a 6/8 time signature. The melody is written in a single voice. The second and fourth staves contain trills, indicated by the 'tr' symbol above the notes. The piece concludes with a double bar line and repeat dots.

Irish Hero. JJo8.068
Blakney Forever. JJo8.068

Musical notation for 'Irish Hero. JJo8.068' and 'Blakney Forever. JJo8.068'. The piece is in B-flat major and 3/8 time. It consists of four staves of music. The first staff begins with a treble clef, a key signature of two flats (B-flat and E-flat), and a 3/8 time signature. The melody is written in a single voice. The piece concludes with a double bar line and repeat dots.

Hanoverian Camp. JJo8.069

Musical notation for 'Hanoverian Camp. JJo8.069'. The piece is in G major and 2/4 time. It consists of three staves of music. The first staff begins with a treble clef, a key signature of one sharp (F#), and a 2/4 time signature. The melody is written in a single voice. The piece concludes with a double bar line and repeat dots.

Mingotti's Maggot. JJo8.070

Highland Wedding. JJo8.071

Trip to the Forest. JJo8.072

Eight Men of Moidart. JJo8.073

Two staves of musical notation for 'Eight Men of Moidart'. The first staff begins with a treble clef, a key signature of one flat (B-flat), and a common time signature (C). The melody features a series of eighth and sixteenth notes, with some beamed sixteenth notes. The second staff continues the melody with similar rhythmic patterns and includes a repeat sign at the beginning.

The Milk Maid. JJo8.074

Two staves of musical notation for 'The Milk Maid'. The first staff begins with a treble clef, a key signature of one sharp (F#), and a common time signature (C). The melody consists of quarter and eighth notes. The second staff continues the melody and includes a repeat sign at the beginning.

Le Petit Doit. JJo8.075

Three staves of musical notation for 'Le Petit Doit'. The first staff begins with a treble clef, a key signature of one sharp (F#), and a 6/8 time signature. The melody is composed of quarter and eighth notes. The second and third staves continue the melody, with the second staff starting with a repeat sign.

Who Can Help it Now. JJo8.076

Two staves of musical notation for 'Who Can Help it Now'. The first staff begins with a treble clef, a key signature of one sharp (F#), and a 2/4 time signature. The melody includes eighth and sixteenth notes, with a triplet of sixteenth notes marked with a '3' above the notes. The second staff continues the melody and includes a triplet of sixteenth notes marked with a '3' below the notes.

Lord Rockingham's Reel or.. JJo8.077

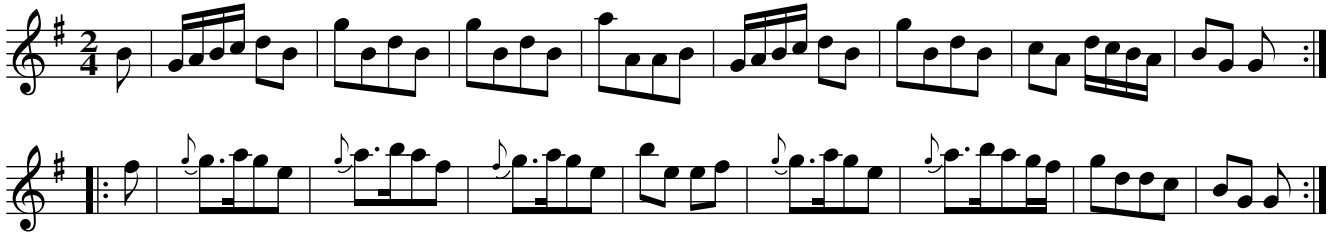
JJo8.077 Scampden's Cade

Duke of Perth's Reel, aka. JJo8.077

Broom's Reel. JJo8.077

Lolly Pops & Bull's Eyes. JJo8.077

Scamp(s)ton Cade . JJo8.077



The Merry Maids of Shefnal. JJo8.078



The Brickmakers. JJo8.079



Nebuchadnezzar's Delight. JJo8.080

Musical score for 'Nebuchadnezzar's Delight. JJo8.080'. The score consists of four staves of music in 3/8 time. The first staff begins with a repeat sign and two trills (tr) over the first two notes. The melody is primarily eighth-note based with some sixteenth-note runs. The key signature has one sharp (F#).

The Charming Polly. JJo8.081

Musical score for 'The Charming Polly. JJo8.081'. The score consists of three staves of music in 2/4 time. The key signature has two sharps (F# and C#). The melody is primarily eighth-note based with some sixteenth-note runs. The first staff begins with a repeat sign.

Lady Petersham's Will. JJo8.082

Musical score for 'Lady Petersham's Will. JJo8.082'. The score consists of four staves of music in 2/4 time. The key signature has two sharps (F# and C#). The melody is primarily eighth-note based with many triplets (3) and trills (tr). The first staff begins with a trill (tr) over the first note. The second staff has a trill (tr) over the first note and triplets (3) under the last two notes. The third and fourth staves feature multiple triplets (3) throughout the melody.

One More Dance and Then... JJo8.083

Two staves of musical notation in treble clef, key signature of two sharps (F# and C#), and common time. The first staff begins with a repeat sign and contains a series of eighth and sixteenth notes. The second staff continues the melody with similar rhythmic patterns, ending with a repeat sign.

A Trip to Paris. JJo8.084

Four staves of musical notation in treble clef, key signature of two flats (Bb and Eb), and 6/8 time. The first staff starts with a repeat sign and features a mix of eighth and sixteenth notes. The second staff continues the melody. The third staff includes a flat sign (b) under a note. The fourth staff concludes with a trill (tr) over a note and a repeat sign.

Jay's Frolick. JJo8.085

Four staves of musical notation in treble clef, key signature of one sharp (F#), and 6/8 time. The first staff begins with a repeat sign and contains eighth and sixteenth notes. The second staff continues the melody, featuring a sharp sign (#) under a note. The third staff includes a flat sign (b) under a note. The fourth staff concludes with a repeat sign.

The Black Boy. JJo8.086

Musical score for 'The Black Boy' (JJo8.086). The piece is in 2/4 time and D major. It consists of two staves of music. The first staff begins with a repeat sign and contains a melody of eighth and sixteenth notes. The second staff provides a harmonic accompaniment with similar rhythmic patterns.

Edmonton Assembly. JJo8.087

Musical score for 'Edmonton Assembly' (JJo8.087). The piece is in 2/4 time and D major. It consists of three staves of music. The first staff features a melody with eighth notes and rests. The second and third staves provide a rhythmic accompaniment with eighth-note patterns. A trill (tr.) is indicated above the final note of the second staff.

The City Mell. JJo8.088

Musical score for 'The City Mell' (JJo8.088). The piece is in 2/4 time and D major. It consists of two staves of music. The first staff contains a melody of eighth notes. The second staff provides a harmonic accompaniment with eighth-note patterns.

The Master of Ceremonies. JJo8.089

Musical score for 'The Master of Ceremonies' (JJo8.089). The piece is in 2/4 time and D major. It consists of four staves of music. The first staff features a melody of eighth notes. The second, third, and fourth staves provide a rhythmic accompaniment with eighth-note patterns.

The Scotch Ramble. JJo8.091

Two staves of musical notation for 'The Scotch Ramble'. The key signature is two sharps (F# and C#) and the time signature is common time (C). The first staff begins with a repeat sign and contains a series of eighth and sixteenth notes. The second staff continues the melody with similar rhythmic patterns.

Bonny Kate

Two staves of musical notation for 'Bonny Kate'. The key signature is two sharps (F# and C#) and the time signature is common time (C). The first staff starts with a repeat sign and features a mix of eighth and sixteenth notes. The second staff continues the piece with a similar melodic line.

The Crown. JJo8.090

Three staves of musical notation for 'The Crown'. The key signature is two sharps (F# and C#) and the time signature is 6/8. The first staff begins with a repeat sign and contains a melody of eighth notes. The second and third staves continue the piece with similar rhythmic and melodic patterns.

The True Briton. JJo8.093

Four staves of musical notation for 'The True Briton'. The key signature is two flats (Bb and Eb) and the time signature is 6/8. The first staff starts with a repeat sign and features a melody with eighth notes and some accidentals. The subsequent staves continue the piece with similar rhythmic and melodic patterns.

Polly Wright. JJo8.094

Two staves of musical notation for the piece 'Polly Wright'. The first staff is in treble clef with a key signature of one sharp (F#) and a common time signature (C). The second staff is in bass clef with the same key signature and time signature. Both staves contain a single melodic line with various rhythmic values and accidentals.

The Hercules. JJo8.095

Two staves of musical notation for the piece 'The Hercules'. The first staff is in treble clef with a key signature of two sharps (F# and C#) and a 6/8 time signature. The second staff is in bass clef with the same key signature and time signature. Both staves contain a single melodic line with various rhythmic values and accidentals.

Lady Bampfylde's Reel. JJo8.096

Two staves of musical notation for the piece 'Lady Bampfylde's Reel'. The first staff is in treble clef with a key signature of one sharp (F#) and a common time signature (C). The second staff is in bass clef with the same key signature and time signature. Both staves contain a single melodic line with various rhythmic values and accidentals.

Chelmsford Assembly. JJo8.097

Two staves of musical notation for the piece 'Chelmsford Assembly'. The first staff is in treble clef with a key signature of one sharp (F#) and a 6/8 time signature. The second staff is in bass clef with the same key signature and time signature. Both staves contain a single melodic line with various rhythmic values and accidentals.

Eliz'h Canning. JJo8.098

Two staves of musical notation for the piece 'Eliz'h Canning'. The first staff is in treble clef with a key signature of two sharps (F# and C#) and a common time signature (C). The second staff is in bass clef with the same key signature and time signature. Both staves contain a single melodic line with various rhythmic values and accidentals.

The Welch Rabbit. JJo8.099

Musical score for 'The Welch Rabbit' (JJo8.099). The piece is in 3/8 time and D major. It consists of four staves of music. The first staff begins with a repeat sign. The melody is characterized by eighth and sixteenth notes, with a final cadence in the fourth measure.

The Nimble Nine Pence. JJo8.100

Musical score for 'The Nimble Nine Pence' (JJo8.100). The piece is in 3/8 time and D major. It consists of four staves of music. The first staff begins with a repeat sign. The melody is characterized by eighth and sixteenth notes, with a final cadence in the fourth measure.

Mother Midnight. JJo8.101

Musical score for 'Mother Midnight' (JJo8.101). The piece is in 3/8 time and D major. It consists of four staves of music. The first staff begins with a repeat sign. The melody is characterized by eighth and sixteenth notes, with a final cadence in the fourth measure.

The Feathers. JJo8.102

Musical score for 'The Feathers' (JJo8.102). The piece is in 2/4 time and G major. It consists of three staves of music. The first two staves feature a melody with a trill (tr) on the final note of the first phrase. The third staff provides a bass line accompaniment.

The British Fishery. JJo8.103
The Britifh Fifhery. JJo8.103

Musical score for 'The British Fishery' (JJo8.103). The piece is in 2/4 time and G major. It consists of two staves of music. The first staff contains the melody, and the second staff contains the bass line accompaniment.

Ben in the Minories. JJo8.104

Musical score for 'Ben in the Minories' (JJo8.104). The piece is in 6/8 time and G major. It consists of four staves of music. The first staff contains the melody, and the following three staves provide a bass line accompaniment.

Tea for Two. JJo8.105

Musical notation for 'Tea for Two' in 2/4 time. The piece is in G major and consists of two staves. The first staff begins with a repeat sign and contains a melody of eighth and sixteenth notes. The second staff provides a harmonic accompaniment with a similar rhythmic pattern.

Enfield Wash. JJo8.106

Musical notation for 'Enfield Wash' in 6/8 time. The piece is in G major and consists of two staves. The first staff features a melody of eighth and sixteenth notes. The second staff provides a harmonic accompaniment with a similar rhythmic pattern.

Jack of Both Sides. JJo8.107

Musical notation for 'Jack of Both Sides' in 6/8 time. The piece is in G major and consists of four staves. The first two staves form the first part of the melody, and the last two staves form the second part. The notation includes various rhythmic values such as eighth, sixteenth, and dotted notes.

The Blind Man's Ramble. JJo8108
 Chips n' Shavins, aka. JJo8108

Musical score for 'The Blind Man's Ramble' (JJo8108). The score consists of three staves of music in G major (one sharp) and common time (C). The first staff begins with a repeat sign and contains a melody of eighth and sixteenth notes. The second staff continues the melody with similar rhythmic patterns. The third staff provides a bass line with a steady eighth-note accompaniment.

Prince Edward's Birth Day. JJo8.109

Musical score for 'Prince Edward's Birth Day' (JJo8.109). The score consists of two staves of music in G major (one sharp) and 6/8 time. The first staff begins with a repeat sign and features a melody with eighth and sixteenth notes. The second staff provides a bass line with a steady eighth-note accompaniment.

Joe's Rant. JJo8.110

Musical score for 'Joe's Rant' (JJo8.110). The score consists of two staves of music in G major (one sharp) and 2/4 time. The first staff begins with a repeat sign and contains a melody with eighth and sixteenth notes. The second staff provides a bass line with a steady eighth-note accompaniment. A 'sic' marking is placed above the final note of the first staff.

Eatwick Assembly. JJo8.111

Musical score for 'Eatwick Assembly. JJo8.111'. The score consists of four staves of music in treble clef, key of D major (one sharp), and common time (C). The first staff begins with a repeat sign and contains a melodic line with a trill (tr) at the end. The second staff continues the melody. The third staff features a trill (tr) in the middle. The fourth staff concludes the piece with two trills (tr) and a final double bar line.

Sir Charles's Rant. JJo8.112

Musical score for 'Sir Charles's Rant. JJo8.112'. The score consists of four staves of music in treble clef, key of D major (one sharp), and 6/8 time. The first staff begins with a repeat sign and contains a melodic line. The second staff continues the melody with a more active eighth-note pattern. The third and fourth staves feature a consistent eighth-note accompaniment pattern, with the fourth staff ending with a double bar line.

Hampsted Belles. JJo8.113

Musical score for 'Hampsted Belles. JJo8.113'. The score consists of two staves of music in treble clef, key of B-flat major (two flats), and 6/8 time. The first staff begins with a repeat sign and contains a melodic line with a complex rhythmic pattern. The second staff continues the melody with a similar rhythmic pattern, ending with a double bar line.

My own Whim. JJo8.114

Musical notation for 'My own Whim. JJo8.114'. The piece is in treble clef, key of D major (two sharps), and 12/8 time. It consists of two staves of music. The first staff begins with a repeat sign and contains a series of eighth notes. The second staff continues the melody with similar rhythmic patterns.

The Round House. JJo8.115

Musical notation for 'The Round House. JJo8.115'. The piece is in treble clef, key of D major (two sharps), and 12/8 time. It consists of three staves of music. The first staff starts with a repeat sign and features a mix of quarter and eighth notes. The second and third staves continue the melody with various rhythmic figures.

Trip to Glascow. JJo8.116

Musical notation for 'Trip to Glascow. JJo8.116'. The piece is in treble clef, key of D major (two sharps), and common time (C). It consists of two staves of music. The first staff begins with a repeat sign and contains a simple melody of quarter notes. The second staff continues the melody and ends with the marking 'D.C.' (Da Capo).

Lem's Rant. JJo8.117

Musical notation for 'Lem's Rant. JJo8.117'. The piece is in treble clef, key of D major (two sharps), and common time (C). It consists of four staves of music. The first two staves feature prominent triplet rhythms, indicated by a '3' above the notes. The third and fourth staves continue the piece with more complex rhythmic patterns, including triplets and sixteenth notes.

Trip to the North. JJo8.118

Musical notation for 'Trip to the North' (JJo8.118). It consists of two staves of music in treble clef, 2/2 time signature, and one sharp (F#). The melody is written on the first staff, and the accompaniment is on the second staff. The piece begins with a repeat sign and ends with a double bar line and repeat dots.

My Peggy is a Young Thing. JJo8.119

Musical notation for 'My Peggy is a Young Thing' (JJo8.119). It consists of four staves of music in treble clef, common time (C), and one sharp (F#). The melody is written on the first staff, and the accompaniment is on the second, third, and fourth staves. The piece begins with a repeat sign and ends with a double bar line and repeat dots. The fourth staff contains several triplet markings.

Ormond Bridge. JJo8.120

Musical notation for 'Ormond Bridge' (JJo8.120). It consists of two staves of music in treble clef, 6/8 time signature, and two sharps (F# and C#). The melody is written on the first staff, and the accompaniment is on the second staff. The piece begins with a repeat sign and ends with a double bar line and repeat dots.

The Novelty. JJo8.121

Musical notation for 'The Novelty' (JJo8.121). It consists of two staves of music in treble clef, 6/8 time signature, and one sharp (F#). The melody is written on the first staff, and the accompaniment is on the second staff. The piece begins with a repeat sign and ends with a double bar line and repeat dots.

Frolick and Free. JJo8.122



I'm a top of Tom Tickler's Ground. JJo8.123

Musical score for 'I'm a top of Tom Tickler's Ground. JJo8.123'. The score is written in treble clef with a key signature of one sharp (F#) and a time signature of 6/8. It consists of four staves. The first staff begins with a repeat sign and contains a melody with eighth and sixteenth notes, including a triplet marked 'tr'. The second staff continues the melody with a triplet marked 'tr'. The third and fourth staves provide a rhythmic accompaniment with eighth and sixteenth notes.

Under the Rose. JJo8.124

Musical score for 'Under the Rose. JJo8.124'. The score is written in treble clef with a key signature of one sharp (F#) and a time signature of common time (C). It consists of two staves. The first staff begins with a repeat sign and contains a melody with quarter and eighth notes, including a triplet marked 'tr'. The second staff provides a rhythmic accompaniment with quarter and eighth notes.

Twenty may play as well as One. JJo8.125

Musical score for 'Twenty may play as well as One. JJo8.125'. The score is written in treble clef with a key signature of one sharp (F#) and a time signature of 2/4. It consists of two staves. The first staff begins with a repeat sign and contains a melody with eighth and sixteenth notes. The second staff provides a rhythmic accompaniment with eighth and sixteenth notes.

Derby Captain. JJo8.126

Musical score for 'Derby Captain' (JJo8.126). The piece is in 3/8 time and B-flat major. It consists of two staves of music. The first staff begins with a repeat sign and contains a melody of eighth and sixteenth notes. The second staff provides a harmonic accompaniment with similar rhythmic patterns.

St. James's Beauties. JJo8.127

Musical score for 'St. James's Beauties' (JJo8.127). The piece is in 6/8 time and D major. It consists of three staves of music. The first staff features a melody with many sixteenth notes. The second and third staves provide a rhythmic accompaniment with eighth and sixteenth notes.

The Bacon Fitch. JJo8.128

Trip to Dunmow. JJo8.128

Musical score for 'The Bacon Fitch' (JJo8.128) and 'Trip to Dunmow' (JJo8.128). The piece is in 2/4 time and D major. It consists of two staves of music. The first staff has a melody with eighth and sixteenth notes, including a trill. The second staff provides a harmonic accompaniment.

Le Debauchè. JJo8.129

Musical score for 'Le Debauchè' (JJo8.129). The piece is in 6/8 time and B-flat major. It consists of three staves of music. The first staff features a melody with many sixteenth notes. The second and third staves provide a rhythmic accompaniment with eighth and sixteenth notes. A trill (tr) is marked above a note in the second staff.

La Jolie Baiseur. JJo8.130

Musical score for 'La Jolie Baiseur' (JJo8.130). The piece is in C major and common time. It consists of three staves of music. The first staff begins with a repeat sign and contains a melody with two trills (tr) on the notes G4 and A4. The second staff continues the melody, also featuring a trill on G4. The third staff concludes the piece with a repeat sign.

Brays of Dornoch. JJo8.131

Musical score for 'Brays of Dornoch' (JJo8.131). The piece is in D major and common time. It consists of four staves of music. The first staff begins with a repeat sign and contains a melody with a dotted quarter note on D4. The second staff continues the melody with a dotted quarter note on E4. The third and fourth staves continue the piece, ending with a repeat sign.

The Negligè. JJo8.132

Musical score for 'The Negligè' (JJo8.132). The piece is in B-flat major and 6/8 time. It consists of two staves of music. The first staff begins with a repeat sign and contains a melody with a dotted quarter note on B-flat4. The second staff continues the melody, featuring two trills (tr) on the notes C5 and B-flat4, and ends with a repeat sign.

The Bonsadalians. JJo8.133

Musical score for 'The Bonsadalians' (JJo8.133). The piece is in D major and 2/4 time. It consists of two staves of music. The first staff begins with a repeat sign and contains a melody with a dotted quarter note on D4. The second staff continues the melody with a dotted quarter note on E4 and ends with a repeat sign.

Bristol Wells. JJo8.134

Two staves of musical notation for the piece 'Bristol Wells'. The music is in treble clef with a key signature of one sharp (F#) and a time signature of 6/8. The first staff begins with a repeat sign and contains a series of eighth and sixteenth notes. The second staff continues the melody with similar rhythmic patterns.

A Trip to Nettle Bed. JJo8.135

Six staves of musical notation for the piece 'A Trip to Nettle Bed'. The music is in treble clef with a key signature of two flats (Bb, Eb) and a time signature of 6/8. The notation includes various ornaments such as trills (tr) and triplets (3). A first ending bracket labeled '1' and a second ending bracket labeled '2' are present in the second staff. The piece concludes with a repeat sign and a final cadence.

The Milliner's Shop. JJo8.136

Three staves of musical notation for the piece 'The Milliner's Shop'. The music is in treble clef with a key signature of two flats (Bb, Eb) and a time signature of 6/8. The notation features a steady eighth-note melody with a trill (tr) in the second staff. The piece ends with a repeat sign and a final cadence.

The Young Fox. JJo8.137

Musical score for 'The Young Fox' (JJo8.137). The score consists of four staves of music in G major (one sharp) and 6/8 time. The first staff begins with a treble clef and a key signature of one sharp. The music features a mix of eighth and sixteenth notes, with some triplet patterns. The second staff includes a repeat sign with first and second endings. The third and fourth staves continue the melodic line with various rhythmic patterns and ornaments.

Downie's Humour. JJo8.138

Musical score for 'Downie's Humour' (JJo8.138). The score consists of two staves of music in G major (one sharp) and 2/4 time. The first staff begins with a treble clef and a key signature of one sharp. The music features a mix of eighth and sixteenth notes, with some triplet patterns. The second staff continues the melodic line with various rhythmic patterns and ornaments, including a trill (tr) over a note.

The Irish Man's Choice. JJo8.139
 My Mind Will Never Be Easy, aka. JJo8.139
 Woo'd and Married and a', aka. JJo8.139

Musical score for 'The Irish Man's Choice' (JJo8.139). The score consists of three staves of music in G minor (two flats) and 3/8 time. The first staff begins with a treble clef and a key signature of two flats. The music features a mix of eighth and sixteenth notes, with some triplet patterns. The second and third staves continue the melodic line with various rhythmic patterns and ornaments.

Litchfield Races. JJo8.140

Musical score for "Litchfield Races. JJo8.140". The piece is in G major and 6/8 time. It consists of two staves. The first staff contains the melody, and the second staff contains the accompaniment. The melody is characterized by a rhythmic pattern of eighth and sixteenth notes, with a repeat sign at the beginning and end.

Blechynden's Maggot. JJo8.141

Musical score for "Blechynden's Maggot. JJo8.141". The piece is in F major and 6/8 time. It consists of four staves. The first staff contains the melody, and the subsequent three staves contain the accompaniment. The melody is characterized by a rhythmic pattern of eighth and sixteenth notes, with a repeat sign at the beginning and end.

Ge Ho Dobin. JJo8.142

Musical score for "Ge Ho Dobin. JJo8.142". The piece is in G major and 6/8 time. It consists of three staves. The first staff contains the melody, and the subsequent two staves contain the accompaniment. The melody is characterized by a rhythmic pattern of eighth and sixteenth notes, with a repeat sign at the beginning and end.

The Steel Hoop. JJo8.143



Musical score for 'The Steel Hoop' in 2/4 time, featuring four staves of treble clef notation with a key signature of one sharp (F#). The piece consists of two measures of music, each repeated twice. The melody is characterized by eighth and sixteenth notes, with a final cadence on the second measure.

New Year's Day in the Morning. JJo8.144



Musical score for 'New Year's Day in the Morning' in 6/8 time, featuring four staves of treble clef notation with a key signature of three sharps (F#, C#, G#). The piece consists of two measures of music, each repeated twice. The melody is characterized by eighth and sixteenth notes, with a final cadence on the second measure.

Turkish Jigg. JJo8.145



Musical score for 'Turkish Jigg' in 6/8 time, featuring four staves of treble clef notation with a key signature of one sharp (F#). The piece consists of two measures of music, each repeated twice. The melody is characterized by eighth and sixteenth notes, with a final cadence on the second measure. A trill (tr) is indicated above the second measure of the first staff.

Cavendish Court or.. JJo8.146

Look Sharp. JJo8.146

The Minuet 4 times, the last tune twice.

St. Bride's Bells. JJo8.147

The Scot's Hall. JJo8.148

Gallop & Shite, aka. JJo8.148

Cow's Corrant, aka. JJo8.148

Princess Augusta's Tamborine. JJo8.149

Musical score for Princess Augusta's Tamborine. JJo8.149. The score is written in treble clef, key of D major (one sharp), and 2/4 time. It consists of four staves of music. The first staff begins with a treble clef, a key signature of one sharp (F#), and a 2/4 time signature. The music features a mix of eighth and sixteenth notes, often beamed together. The second staff includes a trill (tr) over a note. The piece concludes with a double bar line and repeat dots.

Merry Girls of Maidstone. JJo8.150

Musical score for Merry Girls of Maidstone. JJo8.150. The score is written in treble clef, key of D major (one sharp), and 6/8 time. It consists of four staves of music. The first staff begins with a treble clef, a key signature of one sharp (F#), and a 6/8 time signature. The music is characterized by a steady eighth-note rhythm. Trills (tr) are indicated over several notes in the first and second staves. The piece ends with a double bar line and repeat dots.

The Bona Roba. JJo8.151

Musical score for The Bona Roba. JJo8.151. The score is written in treble clef, key of B minor (two flats), and 6/8 time. It consists of two staves of music. The first staff begins with a treble clef, a key signature of two flats (Bb, Eb), and a 6/8 time signature. The music features a consistent eighth-note pattern. The piece concludes with a double bar line and repeat dots.

Prince George's March. JJo8.152

Two staves of musical notation for Prince George's March. The first staff is in treble clef, key of D major, and common time. The second staff is also in treble clef, key of D major, and common time, featuring a trill (tr) on the first measure.

Miss Nanny Frowns. JJo8.153

Three staves of musical notation for Miss Nanny Frowns. The first staff is in treble clef, key of D major, and 6/8 time. The second and third staves are also in treble clef, key of D major, and 6/8 time.

Chalford Bottom. JJo8.154

Two staves of musical notation for Chalford Bottom. The first staff is in treble clef, key of D major, and 2/4 time, featuring several triplets (3). The second staff is also in treble clef, key of D major, and 2/4 time, featuring triplets and a trill (tr).

Lasses of Lynn. JJo8.155

Two staves of musical notation for Lasses of Lynn. The first staff is in treble clef, key of D major, and common time. The second staff is also in treble clef, key of D major, and common time.

Love in a Hurry. JJo8.156

Musical score for 'Love in a Hurry' (JJo8.156). The score is written in treble clef with a 3/8 time signature. It consists of four staves of music. The first staff begins with a repeat sign and contains a melodic line with eighth and sixteenth notes. The second staff continues the melody. The third and fourth staves provide harmonic accompaniment with chords and moving lines.

The Chances. JJo8.157

Musical score for 'The Chances' (JJo8.157). The score is written in treble clef with a 3/8 time signature. It consists of two staves of music. The first staff features a melodic line with several trills, indicated by the 'tr' marking. The second staff provides harmonic accompaniment with chords and moving lines.

Trip to White Conduit. JJo8.158

Musical score for 'Trip to White Conduit' (JJo8.158). The score is written in treble clef with a 2/4 time signature. It consists of three staves of music. The first staff begins with a repeat sign and contains a melodic line with eighth and sixteenth notes, including a trill. The second and third staves provide harmonic accompaniment with chords and moving lines.

Contending Orators. JJo8.159

Musical score for 'Contending Orators. JJo8.159' in 2/4 time. It consists of four staves of music. The first staff begins with a repeat sign. The melody is primarily composed of eighth and sixteenth notes, with some dotted rhythms. The piece concludes with a double bar line and repeat dots.

The Milk Sop. JJo8.160

Musical score for 'The Milk Sop. JJo8.160' in 2/4 time. It consists of two staves of music. The key signature has one flat (B-flat). The melody features a mix of eighth and sixteenth notes, with some triplet-like patterns. The piece ends with a double bar line and repeat dots.

Humours of Wapping. JJo8.161

Musical score for 'Humours of Wapping. JJo8.161' in 2/4 time. It consists of four staves of music. The key signature has two flats (B-flat and E-flat). The melody is characterized by a steady eighth-note pattern with some sixteenth-note runs. The piece concludes with a double bar line and repeat dots.

British Carnival. JJo8.162

Two staves of musical notation for 'British Carnival. JJo8.162'. The music is in 2/4 time with a key signature of one flat (Bb). The first staff begins with a repeat sign and contains a melody of eighth and quarter notes. The second staff provides a bass line with similar rhythmic patterns.

Now for it. JJo8.163

Two staves of musical notation for 'Now for it. JJo8.163'. The music is in 2/4 time with a key signature of two sharps (F# and C#). The first staff contains a melody of eighth and quarter notes. The second staff features a bass line with several triplet markings (indicated by a '3' above or below the notes).

Scaramouch. JJo8.164

Two staves of musical notation for 'Scaramouch. JJo8.164'. The music is in common time (C) with a key signature of two sharps (F# and C#). The first staff contains a melody with many sixteenth and thirty-second notes. The second staff provides a bass line with a similar complex rhythmic structure.

We Have Nothing Else to Do. JJo8.165

Two staves of musical notation for 'We Have Nothing Else to Do. JJo8.165'. The music is in 3/8 time with a key signature of two sharps (F# and C#). The first staff contains a melody of eighth and quarter notes. The second staff features a bass line with many sixteenth notes, some grouped with slurs.

Shuter's Humour. JJo8.166

Musical score for 'Shuter's Humour' (JJo8.166). The piece is in G major (one sharp) and 2/4 time. It consists of three staves of music. The first staff begins with a repeat sign and contains a series of eighth and sixteenth notes with some slurs. The second staff continues the melody with similar rhythmic patterns. The third staff concludes the piece with a final cadence.

Leave off here. JJo8.167

Musical score for 'Leave off here' (JJo8.167). The piece is in G major (one sharp) and 3/8 time. It consists of four staves of music. The first staff begins with a repeat sign and features a melodic line with a trill (tr) on the final note. The second and third staves continue the melody with various rhythmic patterns. The fourth staff concludes the piece with a final cadence.

Lord Anson for ever. JJo8.168

Musical score for 'Lord Anson for ever' (JJo8.168). The piece is in G major (one sharp) and common time (C). It consists of two staves of music. The first staff begins with a repeat sign and is marked 'Brisk'. The second staff continues the melody and includes a trill (tr) on a note. The piece concludes with a final cadence.

Mad Couple. JJo8.169

Musical score for 'Mad Couple. JJo8.169'. The score consists of four staves of music in treble clef, key signature of two sharps (F# and C#), and 3/8 time signature. The music is a single melodic line with various rhythmic patterns, including eighth and sixteenth notes, and rests. The piece concludes with a double bar line and repeat dots.

The Cardinal. JJo8.170

Musical score for 'The Cardinal. JJo8.170'. The score consists of two staves of music in treble clef, key signature of one sharp (F#), and 2/4 time signature. The music features a melodic line with several trills, indicated by the 'tr' marking above notes. The piece concludes with a double bar line and repeat dots.

Spithead Fleet. JJo8.171

Musical score for 'Spithead Fleet. JJo8.171'. The score consists of two staves of music in treble clef, key signature of two flats (Bb and Eb), and 6/8 time signature. The music features a melodic line with several trills, indicated by the 'tr' marking above notes. The piece concludes with a double bar line and repeat dots.

Trip to Virginia. JJo8.172

Musical score for 'Trip to Virginia. JJo8.172'. The score consists of two staves of music in treble clef, key signature of one flat (Bb), and 2/4 time signature. The music features a melodic line with various rhythmic patterns, including eighth and sixteenth notes, and rests. The piece concludes with a double bar line and repeat dots.

Something New. JJo8.173



Wild Goose Chace. JJo8.174



Take a Dance. JJo8.175



Canterbury Revel. JJo8.176



Jenny of the Green. JJo8.177

Musical score for 'Jenny of the Green' (JJo8.177). The piece is in 2/4 time with a key signature of two flats (B-flat and E-flat). It consists of two staves. The first staff begins with a repeat sign and contains three measures of eighth-note triplets, followed by a quarter note and a half note. The second staff also begins with a repeat sign and contains a quarter note triplet, a quarter note with a flat, and a half note, followed by two measures of eighth-note triplets and a quarter note.

Sally's Taste. JJo8.178

Musical score for 'Sally's Taste' (JJo8.178). The piece is in 2/4 time with a key signature of two sharps (F# and C#). It consists of three staves. The first staff begins with a repeat sign and contains a series of eighth and sixteenth notes. The second and third staves continue the melodic line with similar rhythmic patterns.

Lib the Loun or.. JJo8.179
Balgeny. JJo8.179

Musical score for 'Lib the Loun or.. Balgeny' (JJo8.179). The piece is in 2/4 time with a key signature of two flats (B-flat and E-flat). It consists of two staves. The first staff begins with a repeat sign and contains a series of eighth and sixteenth notes. The second staff continues the melodic line with similar rhythmic patterns.

The Alcove. JJo8.180

Musical score for 'The Alcove' (JJo8.180). The piece is in 2/4 time with a key signature of two sharps (F# and C#). It consists of three staves. The first staff begins with a repeat sign and contains a series of eighth and sixteenth notes. The second and third staves continue the melodic line, with the third staff featuring a trill (tr) over a quarter note.

Wildboar's Maggot. JJo8.181

Musical score for "Wildboar's Maggot. JJo8.181". The piece is in G minor (one flat) and 2/4 time. It consists of four staves of music. The first staff begins with a repeat sign and contains several trills (tr) over the notes. The second staff continues the melody with a trill at the end. The third and fourth staves complete the piece, with a trill in the final measure of the fourth staff.

The Lasses of Leeds. JJo8.182

Musical score for "The Lasses of Leeds. JJo8.182". The piece is in G major (one sharp) and 2/4 time. It consists of two staves of music. The first staff begins with a repeat sign and contains trills (tr) over the notes. The second staff continues the melody and ends with a double bar line and the instruction "D.C." (Da Capo).

Gallant Blakeney. JJo8.183

Musical score for "Gallant Blakeney. JJo8.183". The piece is in G major (one sharp) and 6/8 time. It consists of four staves of music. The first staff begins with a repeat sign and features a complex rhythmic pattern. The second and third staves continue the melody with similar rhythmic patterns. The fourth staff concludes the piece with a final cadence.

The Partridge. JJo8.184

Musical score for 'The Partridge' (JJo8.184). The piece is in G major and common time. It consists of two staves of music. The first staff begins with a repeat sign and contains a series of eighth and sixteenth notes. The second staff continues the melody with similar rhythmic patterns, ending with a final cadence.

Blakeney's Tamborine. JJo8.185

Musical score for 'Blakeney's Tamborine' (JJo8.185). The piece is in D major and 2/4 time. It consists of three staves of music. The first staff features a melody with eighth notes and a trill (tr) at the end. The second staff continues the melody with eighth notes and a trill. The third staff concludes the piece with a final cadence.

Barry's Delight. JJo8.186

Musical score for 'Barry's Delight' (JJo8.186). The piece is in D major and 2/4 time. It consists of two staves of music. The first staff features a melody with eighth notes and triplets (3) over groups of three notes. The second staff continues the melody with eighth notes.

Little Driver. JJo8187

Musical score for 'Little Driver' (JJo8187). The piece is in B-flat major and 6/8 time. It consists of two staves of music. The first staff features a melody with eighth notes and trills (tr). The second staff continues the melody with eighth notes and trills.

Jacky Wagtail. JJo8.188

Two staves of music in G major and 6/8 time. The first staff begins with a repeat sign and contains a melody of eighth and sixteenth notes. The second staff provides a rhythmic accompaniment with eighth and sixteenth notes.

Tommy's Chance. JJo8.189

Two staves of music in G major and 6/8 time. The first staff features a melody with eighth and sixteenth notes. The second staff includes trills, indicated by 'tr' above the notes, and provides a rhythmic accompaniment.

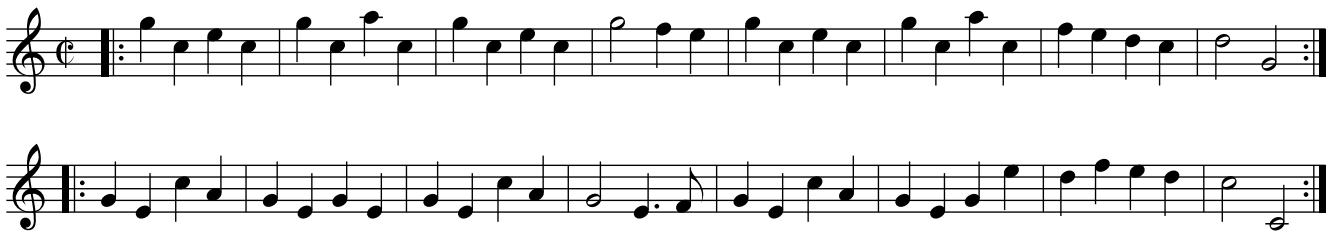
The King's Arms Assembly. JJo8190

Two staves of music in G major and 2/4 time. The first staff contains a melody with trills ('tr') and a fermata at the end. The second staff provides a rhythmic accompaniment with eighth and sixteenth notes.

Hawke's Humour. JJo8.191

Three staves of music in G major and 2/4 time. The first two staves feature a melody with eighth and sixteenth notes. The third staff provides a rhythmic accompaniment with eighth and sixteenth notes.

Worcester Races. JJo8.192



A Trip to Bath. JJo8193

Three staves of musical notation for the piece "A Trip to Bath. JJo8193". The first staff begins with a treble clef, a key signature of one sharp (F#), and a 2/4 time signature. It starts with a repeat sign and contains a melody of eighth and sixteenth notes. The second staff continues the melody, featuring a trill (tr) over a note. The third staff concludes the piece with a final cadence.

Miss Townsend's Delight. JJo8.194

Four staves of musical notation for the piece "Miss Townsend's Delight. JJo8.194". The first staff begins with a treble clef, a key signature of one flat (Bb), and a 3/8 time signature. It starts with a repeat sign and contains a melody of eighth and sixteenth notes. The second staff continues the melody, featuring a trill (tr) over a note. The third and fourth staves conclude the piece with a final cadence.

The Drunken Doctor. JJo8.195

Musical score for 'The Drunken Doctor' (JJo8.195). The piece is in 6/8 time and G major. It consists of three staves of music. The first staff begins with a repeat sign and contains a melody with eighth and sixteenth notes. The second and third staves provide accompaniment with similar rhythmic patterns.

Highland Man Kissd his Mother. JJo8.196

Musical score for 'Highland Man Kissd his Mother' (JJo8.196). The piece is in 6/8 time and G major. It consists of two staves of music. The first staff features a melody with a trill (tr) on the second measure. The second staff provides accompaniment.

Loving Susee. JJo8.197

Musical score for 'Loving Susee' (JJo8.197). The piece is in 2/4 time and G major. It consists of four staves of music. The first three staves contain the main melody with various ornaments and a trill (tr) in the third staff. The fourth staff provides accompaniment.

Lady Cordelia's Jigg. JJo8.198

key sig given as one flat in MS

Musical score for 'Lady Cordelia's Jigg' (JJo8.198). The piece is in 6/8 time and G major. It consists of two staves of music. The first staff begins with a key signature change to one flat (F major) and contains the melody. The second staff provides accompaniment.

The Mantua Makers Frolick. JJo8.199

Musical score for 'The Mantua Makers Frolick. JJo8.199'. The score is written in treble clef with a key signature of one flat (Bb) and a time signature of 2/4. It consists of three staves. The first staff begins with a repeat sign and contains several measures with triplets of eighth notes. The second and third staves continue the melody with various rhythmic patterns, including eighth and sixteenth notes, and also feature triplet markings.

The Tartar. JJo8.200

Musical score for 'The Tartar. JJo8.200'. The score is written in treble clef with a key signature of two sharps (D major) and a time signature of 2/4. It consists of two staves. The first staff begins with a repeat sign and contains several measures with triplets of eighth notes. The second staff continues the melody with various rhythmic patterns, including eighth and sixteenth notes, and also features triplet markings.