

Rakes of Rochester. JJo4.001

Musical score for 'Rakes of Rochester' in G major (two sharps) and 2/4 time. It consists of four staves of treble clef notation. The first staff begins with a treble clef, a key signature of two sharps, and a 2/4 time signature. The music features a mix of eighth and sixteenth notes, with some triplet-like patterns. The second and fourth staves end with double bar lines and repeat dots. The third staff begins with a repeat sign.

Captain Flash. JJo4.002

Musical score for 'Captain Flash' in G major (two sharps) and 3/8 time. It consists of four staves of treble clef notation. The first staff begins with a treble clef, a key signature of two sharps, and a 3/8 time signature. The music is characterized by eighth and sixteenth notes. The second and fourth staves end with double bar lines and repeat dots. The third staff begins with a repeat sign.

The Lady's Favourite. JJo4.003

Musical score for 'The Lady's Favourite' in G major (two sharps) and 2/4 time. It consists of three staves of treble clef notation. The first staff begins with a treble clef, a key signature of two sharps, and a 2/4 time signature. The music features a mix of eighth and sixteenth notes, with some triplet-like patterns. The second and third staves end with double bar lines and repeat dots. The second staff begins with a repeat sign.

Each strain twice

Lady Nelly's Fancy. JJo4.004

Musical score for "Lady Nelly's Fancy" (JJo4.004). The piece is in 6/8 time and B-flat major. It consists of four staves of music. The first staff begins with a treble clef, a key signature of one flat, and a 6/8 time signature. The melody starts with a dotted quarter note, followed by eighth notes. A trill (tr.) is marked above the first measure. The second staff continues the melody, featuring a sixteenth-note triplet and a first ending bracket labeled (1). The third staff shows a repeat sign and a flat (b) under the second measure. The fourth staff concludes with a trill (tr.) and a second ending bracket labeled (2).

Captain Driver's Delight. JJo4.005

Musical score for "Captain Driver's Delight" (JJo4.005). The piece is in common time (C) and A major. It consists of two staves of music. The first staff begins with a treble clef, a key signature of two sharps, and a common time signature. The melody is composed of eighth and quarter notes. The second staff continues the melody, ending with a repeat sign.

Marble Hall. JJo4.006

Musical score for "Marble Hall" (JJo4.006). The piece is in 9/8 time and A major. It consists of four staves of music. The first staff begins with a treble clef, a key signature of one sharp, and a 9/8 time signature. The melody is composed of eighth and quarter notes. The second staff continues the melody. The third staff features a repeat sign and a sharp (#) under the final measure. The fourth staff concludes the piece.

Now or Never. JJo4.007

Musical notation for 'Now or Never. JJo4.007'. It consists of three staves of music in 6/8 time. The first staff begins with a treble clef and a key signature of one sharp (F#). The melody is composed of eighth and quarter notes. The second and third staves continue the melody with similar rhythmic patterns, ending with repeat signs.

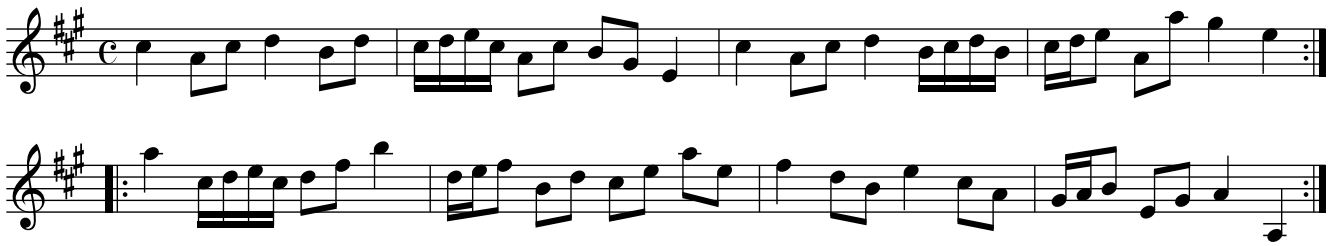
Trip to Portbury. JJo4.008

Musical notation for 'Trip to Portbury. JJo4.008'. It consists of two staves of music in 2/4 time. The first staff begins with a treble clef and a key signature of one sharp (F#). The melody is characterized by frequent sixteenth-note runs. The second staff continues this intricate melodic pattern, ending with a repeat sign.

Kettle Bender. JJo4.009

Musical notation for 'Kettle Bender. JJo4.009'. It consists of five staves of music in 2/4 time. The first staff begins with a treble clef and a key signature of two sharps (D major). The melody is primarily composed of quarter and eighth notes. The second and third staves continue the melody with various rhythmic patterns. The fourth and fifth staves conclude the piece with repeat signs.

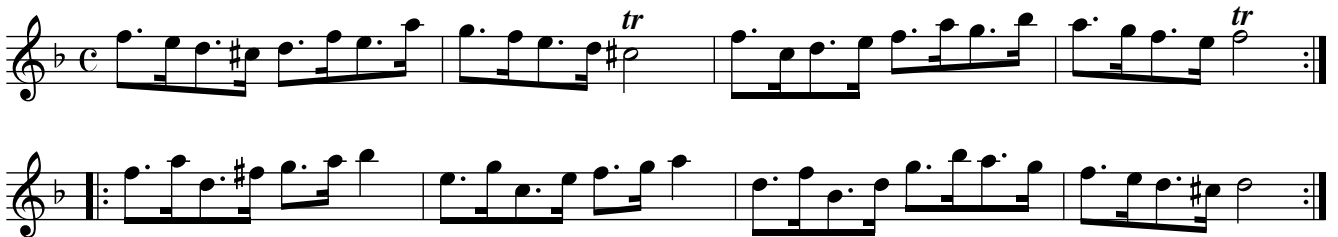
Yorkshire Lad. JJo4.010



Trip to Manchester. JJo4.011



Have a Sup of Brandy. JJo4.012



Cure of all Grief. JJo4.013



Harlequin's Maggot. JJo4.014

Transcription follows book. Time signature 9/4, but note values and barring in 9/8.

John Barton. JJo4.015

Miss Ash's Delight. JJo4.016

Jollity, The. JJo4.017

Musical score for 'Jollity, The. JJo4.017'. The score consists of four staves of music in 6/8 time, with a key signature of one flat (Bb). The first staff begins with a treble clef and a 6/8 time signature. The second staff ends with a repeat sign. The third staff begins with a repeat sign. The fourth staff ends with a repeat sign and a first ending bracket labeled '(1)'.

Moll Ross. JJo4.018

Musical score for 'Moll Ross. JJo4.018'. The score consists of three staves of music in 6/8 time, with a key signature of one flat (Bb). The first staff begins with a treble clef and a 6/8 time signature. The second and third staves continue the melody.

Burgo Master. JJo4.019

Musical score for 'Burgo Master. JJo4.019' in G major and 2/4 time. The score consists of six staves of music. The first staff begins with a treble clef, a key signature of one sharp (F#), and a 2/4 time signature. The melody starts on G4 and ends with a trill (tr) on G5. The second staff continues the melody with various rhythmic patterns and slurs. The third staff features a repeat sign and a key signature change to one sharp and one flat (F# and Bb). The fourth staff continues the melody with a key signature change to one flat (Bb). The fifth and sixth staves conclude the piece with various rhythmic patterns and a final cadence.

Last strain but once.

Phebe's Delight. JJo4.020

Musical score for 'Phebe's Delight. JJo4.020' in Bb major and 6/8 time. The score consists of four staves of music. The first staff begins with a treble clef, a key signature of two flats (Bb and Eb), and a 6/8 time signature. The melody starts on Bb4 and ends on Bb4. The second staff continues the melody with various rhythmic patterns and slurs. The third staff features a repeat sign and continues the melody. The fourth staff concludes the piece with various rhythmic patterns and a final cadence.

Lads of Footscray. JJo4.021

Musical score for 'Lads of Footscray' in G major and 6/8 time. It consists of four staves of music. The first staff is the melody, followed by three staves of accompaniment. The piece concludes with a double bar line and repeat dots.

Pot Stick. JJo4.022
Over the Water to Charlie, aka. JJo4.022

Musical score for 'Pot Stick' in G major and 6/8 time. It consists of three staves of music. The first staff is the melody, followed by two staves of accompaniment. The piece concludes with a double bar line and repeat dots.

Harry's Delight. JJo4.023

Musical score for 'Harry's Delight' in F major and 6/8 time. It consists of four staves of music. The first staff is the melody, followed by three staves of accompaniment. Trills (tr) are indicated above several notes in the first three staves. The piece concludes with a double bar line and repeat dots.

Trip to Birmingham. JJo4.024

Musical score for 'Trip to Birmingham. JJo4.024'. The score consists of four staves of music in G major (one sharp) and 3/8 time. The first staff begins with a treble clef and a key signature of one sharp. The music features a mix of eighth and sixteenth notes, with some rests. The second and third staves continue the melody with similar rhythmic patterns. The fourth staff concludes the piece with a double bar line and repeat dots.

The Jolly Buck. JJo4.025

Musical score for 'The Jolly Buck. JJo4.025'. The score consists of two staves of music in G major (one sharp) and 3/8 time. The first staff begins with a treble clef and a key signature of one sharp. The music is characterized by a steady eighth-note rhythm. The second staff continues the melody and ends with a double bar line and repeat dots.

Scotch Glee. JJo4.026

Musical score for 'Scotch Glee. JJo4.026'. The score consists of four staves of music in G major (one sharp) and 2/4 time. The first staff begins with a treble clef and a key signature of one sharp. The music features a mix of eighth and sixteenth notes, with some rests. The second and third staves continue the melody with similar rhythmic patterns. The fourth staff concludes the piece with a double bar line and repeat dots, and is marked with 'DC' (Da Capo) at the end.

Miss Prateapace. JJo4.027



Sprightly Nancy. JJo4.028

Musical score for "Sprightly Nancy. JJo4.028". The score consists of five staves of music in treble clef, key of B-flat major (two flats), and 2/4 time. The first staff begins with a quarter rest followed by a series of eighth and sixteenth notes. The second staff starts with a repeat sign and continues with similar rhythmic patterns, ending with a double bar line and repeat dots. The third staff continues the melody. The fourth staff continues the melody. The fifth staff continues the melody and ends with a trill (tr) over a quarter note, followed by a double bar line and repeat dots.

The Bandbox. JJo4.029

Musical score for "The Bandbox. JJo4.029". The score consists of two staves of music in treble clef, key of D major (one sharp), and common time (C). The first staff begins with a quarter rest followed by a series of eighth and sixteenth notes. The second staff starts with a repeat sign and continues with similar rhythmic patterns, ending with a double bar line and repeat dots.

The Shift. JJo4.030

Musical score for 'The Shift' in 6/8 time, featuring a trill (*tr*) in the first staff.

The Humours of Katheonra. JJo4.031

Musical score for 'The Humours of Katheonra' in 2/4 time.

Gahagan's Maggot. JJo4.032

Musical score for 'Gahagan's Maggot' in 2/4 time.

The Puff. JJo4.033

Musical score for 'The Puff' in 2/4 time, featuring a trill (*tr*) in the second staff.

Miss Macdonald's Delight. JJo4.034

Widow's Joak. JJo4.035

The last Stake. JJo4.036

The Hunt Royal. JJo4.037

Contending Captains. JJo4.038

Musical score for 'Contending Captains' in 6/8 time. The score consists of four staves of music. The key signature has one flat (B-flat). The first staff begins with a treble clef and a 6/8 time signature. The music is written in a single melodic line. The second staff continues the melody. The third staff includes a repeat sign at the beginning. The fourth staff concludes the piece with a double bar line and repeat dots.

The Stag Hunters Jigg. JJo4.039

Musical score for 'The Stag Hunters Jigg' in 6/8 time. The score consists of four staves of music. The key signature has two sharps (F# and C#). The first staff begins with a treble clef and a 6/8 time signature. A trill (tr) is indicated above the first measure of the first staff. The music is written in a single melodic line. The second staff continues the melody. The third staff includes a repeat sign at the beginning. The fourth staff concludes the piece with a double bar line and repeat dots.

Ballina mona. JJo4.040

Musical score for 'Ballina mona' in 6/8 time. The score consists of three staves of music. The key signature has two sharps (F# and C#). The first staff begins with a treble clef and a 6/8 time signature. The music is written in a single melodic line. The second staff includes a first ending bracket labeled (1). The third staff includes a second ending bracket labeled (2). The piece concludes with a double bar line and repeat dots.

The Stag at Bay. JJo4.041

Musical score for 'The Stag at Bay' (JJo4.041) in 3/8 time, key of D major. The score consists of three staves of music. The first staff begins with a treble clef, a key signature of two sharps (F# and C#), and a 3/8 time signature. The melody is composed of eighth and sixteenth notes, with some beamed sixteenth notes. The second and third staves continue the melody with similar rhythmic patterns and phrasing. The piece concludes with a double bar line and repeat dots.

The Death of the Stag. JJo4.042

Musical score for 'The Death of the Stag' (JJo4.042) in 3/8 time, key of D major. The score consists of four staves of music. The first staff features a treble clef, a key signature of two sharps, and a 3/8 time signature. The melody includes several trills, indicated by 'tr' above the notes. The second staff continues the melody, ending with a trill on a dotted quarter note. The third and fourth staves continue the piece, with trills also present. The score ends with a double bar line and the instruction 'D.C.' (Da Capo).

Luck's Burrow. JJo4.043

Musical score for 'Luck's Burrow' (JJo4.043) in 3/8 time, key of D major. The score consists of four staves of music. The first staff begins with a treble clef, a key signature of two sharps, and a 3/8 time signature. The melody is characterized by frequent sixteenth-note runs and beamed sixteenth notes. The second and third staves continue this rhythmic pattern. The fourth staff concludes the piece with a final melodic phrase and a double bar line.

Clabury House. JJo4.044

Two staves of musical notation for the piece 'Clabury House'. The first staff begins with a treble clef, a key signature of one flat (B-flat), and a common time signature. The melody consists of eighth and sixteenth notes with various slurs and ties. The second staff continues the melody with similar rhythmic patterns and includes repeat signs at the beginning and end.

Wansted Assembly. JJo4.045

Four staves of musical notation for the piece 'Wansted Assembly'. The first staff begins with a treble clef, a key signature of one sharp (F#), and a common time signature. The melody is characterized by frequent sixteenth-note runs and slurs. The subsequent three staves continue the piece with similar rhythmic complexity and include repeat signs at the end of each line.

The Pritty Fool. JJo4.046

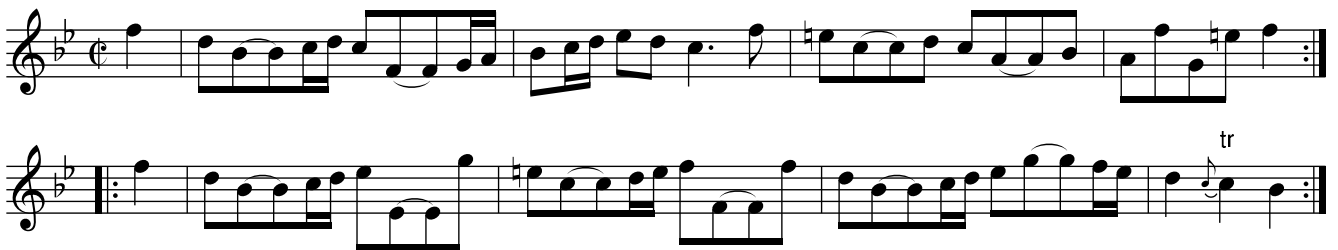
Two staves of musical notation for the piece 'The Pritty Fool'. The first staff begins with a treble clef, a key signature of one sharp (F#), and a common time signature. The melody features eighth-note patterns and a final note with a fermata. The second staff includes a trill (tr) marking and a 'D.C.' (Da Capo) instruction at the end.

Giddy Hall. JJo4.047



Musical score for Giddy Hall. JJo4.047, featuring five staves of music in treble clef, key signature of one sharp (F#), and 6/8 time signature. The score consists of five staves of music, each containing a single melodic line. The first four staves are connected by a brace on the left, and the fifth staff is separated by a double bar line. The music is written in a single melodic line, with various note values and rests.

West Hatch. JJo4.048



Musical score for West Hatch. JJo4.048, featuring two staves of music in treble clef, key signature of one flat (Bb), and common time signature. The score consists of two staves of music, each containing a single melodic line. The first staff is connected to the second staff by a brace on the left. The music is written in a single melodic line, with various note values and rests. A trill (tr) is indicated above the final note of the second staff.

Layton Grains. JJo4.049

Musical score for 'Layton Grains. JJo4.049' in G major and 6/8 time. The score consists of six staves of music. The first staff begins with a treble clef, a key signature of one sharp (F#), and a 6/8 time signature. The melody is characterized by eighth and sixteenth notes, often beamed together. The second staff ends with a repeat sign. The third staff continues the melodic line. The fourth staff features a trill (tr) over a note. The fifth and sixth staves complete the piece with various rhythmic patterns and a final repeat sign.

The King's Oak. JJo4.050

Musical score for 'The King's Oak. JJo4.050' in G major and 3/8 time. The score consists of two staves of music. The first staff begins with a treble clef, a key signature of one sharp (F#), and a 3/8 time signature. The melody is primarily composed of eighth notes. The second staff continues the piece, ending with a repeat sign.

Friday Hill. JJo4.051

Musical score for 'Friday Hill. JJo4.051' in G major and 6/8 time. The score consists of four staves of music. The first staff begins with a treble clef, a key signature of one sharp (F#), and a 6/8 time signature. The melody is composed of eighth and sixteenth notes. The second staff continues the melodic line. The third staff begins with a repeat sign. The fourth staff concludes the piece with a final repeat sign.

Duce Hall. JJo4.052

Two staves of musical notation for the piece 'Duce Hall. JJo4.052'. The first staff begins with a treble clef, a key signature of one flat (B-flat), and a common time signature. The melody consists of eighth and sixteenth notes with various slurs and ties. The second staff continues the melody, featuring a trill (tr) over a note in the middle of the piece. Both staves end with double bar lines and repeat dots.

Nott's Green. JJo4.053

Four staves of musical notation for the piece 'Nott's Green. JJo4.053'. The first staff uses a treble clef, a key signature of two sharps (D major), and a 3/8 time signature. The melody is primarily composed of quarter and eighth notes. The second and third staves continue the melody with similar rhythmic patterns. The fourth staff features a more active accompaniment with sixteenth-note runs. All staves conclude with double bar lines and repeat dots.

Fern Hall. JJo4.054

Three staves of musical notation for the piece 'Fern Hall. JJo4.054'. The first staff is in treble clef, with a key signature of two sharps (D major) and a 3/8 time signature. The melody is characterized by eighth-note patterns and some slurs. The second and third staves continue the piece, with the third staff ending in a final cadence. Each staff is marked with double bar lines and repeat dots.

Valintine House. JJo4.055

Musical score for 'Valintine House. JJo4.055'. The score consists of three staves of music in treble clef, key of D major (two sharps), and 3/8 time. The first staff begins with a treble clef, a key signature of two sharps, and a 3/8 time signature. It contains a melody with a first ending bracket over the first measure and a trill (tr) over the eighth measure. The second and third staves continue the melody with various rhythmic patterns and phrasing, ending with repeat signs.

I know something. JJo4.056

Musical score for 'I know something. JJo4.056'. The score consists of three staves of music in treble clef, key of D major (two sharps), and 2/4 time. The first staff begins with a treble clef, a key signature of two sharps, and a 2/4 time signature. It contains a melody with a first ending bracket over the first measure. The second and third staves continue the melody with various rhythmic patterns and phrasing, ending with repeat signs.

Copt Hall. JJo4.057

Musical score for 'Copt Hall. JJo4.057'. The score consists of four staves of music in treble clef, key of D major (two sharps), and 6/8 time. The first staff begins with a treble clef, a key signature of two sharps, and a 6/8 time signature. It contains a melody with a trill (tr) over the eighth measure. The second, third, and fourth staves continue the melody with various rhythmic patterns and phrasing, ending with repeat signs.

Fair Mead Bottom. JJo4.058

Musical score for 'Fair Mead Bottom. JJo4.058'. The piece is in G major (one sharp) and 6/8 time. It consists of three staves of music. The first staff begins with a treble clef and a key signature of one sharp. The second and third staves begin with repeat signs. The music features a mix of eighth and sixteenth notes, with some triplet-like patterns.

Pirgo. JJo4.059

Musical score for 'Pirgo. JJo4.059'. The piece is in B-flat major (two flats) and 6/8 time. It consists of two staves of music. The first staff begins with a treble clef and a key signature of two flats. The second staff begins with a repeat sign and includes the marking 'D.C.' (Da Capo) at the end. The music features a mix of eighth and sixteenth notes, with some triplet-like patterns.

Lowton Hall. JJo4.060

Musical score for 'Lowton Hall. JJo4.060'. The piece is in A major (three sharps) and 6/8 time. It consists of four staves of music. The first staff begins with a treble clef and a key signature of three sharps. The second, third, and fourth staves begin with repeat signs. The music features a mix of eighth and sixteenth notes, with some triplet-like patterns.

Wansted House. JJo4.061

Musical score for 'Wansted House' (JJo4.061) in G major (one sharp) and 2/4 time. The score consists of four staves. The first staff is the melody, featuring eighth and sixteenth notes with some triplets. The second and third staves are accompaniment, with the second staff using a more rhythmic pattern of eighth notes and the third staff using a pattern of quarter notes. The fourth staff is a bass line with eighth notes and some triplets. The piece concludes with a double bar line and repeat dots.

The Duke's Birth Day. JJo4.062

Musical score for 'The Duke's Birth Day' (JJo4.062) in G major (one sharp) and 2/4 time. The score consists of two staves. The first staff is the melody, featuring eighth notes and triplets. The second staff is the accompaniment, featuring a rhythmic pattern of eighth notes with triplets. The piece concludes with a double bar line and repeat dots.

The Lake. JJo4.063

Musical score for 'The Lake' (JJo4.063) in G major (one sharp) and 2/4 time. The score consists of four staves. The first staff is the melody, featuring eighth notes and some triplets. The second and third staves are accompaniment, with the second staff using a pattern of eighth notes and the third staff using a pattern of quarter notes. The fourth staff is a bass line with eighth notes and some triplets. The piece concludes with a double bar line and repeat dots.

Beverley Assembly. JJo4.064

Musical notation for 'Beverley Assembly. JJo4.064'. It consists of three staves of music in treble clef, key of D major (one sharp), and 6/8 time. The first staff begins with a treble clef and a key signature of one sharp. The second staff begins with a repeat sign. The third staff ends with a double bar line and repeat dots. Trills (tr) are indicated above the final notes of the first and second staves.

The Rowles. JJo4.065

Musical notation for 'The Rowles. JJo4.065'. It consists of two staves of music in treble clef, key of D major (one sharp), and common time (C). The first staff begins with a treble clef and a key signature of one sharp. The second staff begins with a repeat sign. Trills (tr) and triplets (3) are indicated above notes in the second staff.

The House of Gray. JJo4.066

Musical notation for 'The House of Gray. JJo4.066'. It consists of four staves of music in treble clef, key of B-flat major (two flats), and 6/8 time. The first staff begins with a treble clef and a key signature of two flats. The second and fourth staves end with a double bar line and repeat dots.

The Old Buff. JJo4.067

Musical score for 'The Old Buff. JJo4.067' in G major (one sharp) and common time. The score consists of five staves of music. The first staff begins with a treble clef, a key signature of one sharp (F#), and a common time signature. The melody is written in a single line. The second staff continues the melody. The third staff features a repeat sign at the beginning and a trill (tr) above the final note. The fourth and fifth staves complete the piece with repeat signs at the end.

The Highway to Eglinton. JJo4.068

Musical score for 'The Highway to Eglinton. JJo4.068' in G major (one sharp) and 3/8 time. The score consists of four staves of music. The first staff begins with a treble clef, a key signature of one sharp (F#), and a 3/8 time signature. The melody is written in a single line. The second staff continues the melody. The third staff features a repeat sign at the beginning. The fourth staff completes the piece with a repeat sign at the end.

Hannover Maggot. JJo4.069

Musical score for 'Hannover Maggot. JJo4.069' in G major and 2/4 time. The score consists of six staves of music. The first two staves are the main melody, with the second staff ending in a repeat sign. The third staff features a trill (tr) on the final note. The fourth and fifth staves continue the melody with various rhythmic patterns. The sixth staff includes three triplet markings (3) over groups of notes.

The Wives of Torphican. JJo4.070

Musical score for 'The Wives of Torphican. JJo4.070' in G major and 3/8 time. The score consists of four staves of music. The first staff begins with a trill (tr) and contains a repeat sign. The second and fourth staves end with repeat signs. The third staff also features a trill (tr) on the final note.

Jenny Cameron. JJo4.071

Musical score for 'Jenny Cameron. JJo4.071' in G major and 2/4 time. The score consists of two staves of music. The first staff contains a series of eighth and sixteenth notes. The second staff continues the melody with similar rhythmic patterns.

Molly's Delight. JJo4.072

Musical notation for Molly's Delight. JJo4.072. The piece is in G minor (one flat) and common time. It consists of three staves of music. The first staff begins with a treble clef, a key signature of one flat, and a common time signature. The melody is written in a simple, folk-like style. The second staff continues the melody, starting with a repeat sign. The third staff concludes the piece with a trill (tr) over the final note.

The Scotch Baulk. JJo4.073

Musical notation for The Scotch Baulk. JJo4.073. The piece is in G major (one sharp) and common time. It consists of two staves of music. The first staff begins with a treble clef, a key signature of one sharp, and a common time signature. The melody is characterized by a rhythmic pattern of eighth and sixteenth notes. The second staff continues the melody and ends with a double bar line and the marking 'D.C.' (Da Capo).

Jack Holme's Reel. JJo4.074

Musical notation for Jack Holme's Reel. JJo4.074. The piece is in G major (one sharp) and 6/8 time. It consists of four staves of music. The first staff begins with a treble clef, a key signature of one sharp, and a 6/8 time signature. The melody is written in a reel style, featuring a mix of eighth and sixteenth notes. The second and third staves continue the melody, with the third staff including a trill (tr) over a note. The fourth staff concludes the piece with a double bar line.

The Rebels Flight. JJo4.075

Sig as writ

The musical score for 'The Rebels Flight' is written in 12/8 time and B-flat major. It consists of three staves. The first staff begins with the instruction 'Sig as writ'. The melody is characterized by eighth and sixteenth notes, with some chromaticism. The piece concludes with a double bar line and repeat dots.

The Duke's Reel. JJo4.076

The musical score for 'The Duke's Reel' is written in 6/8 time and D major. It consists of two staves. The melody features several trills, indicated by 'tr' above the notes. The piece concludes with a double bar line and repeat dots.

Brays of Caldel. JJo4.077

The musical score for 'Brays of Caldel' is written in 2/4 time and B-flat major. It consists of four staves. The melody is primarily composed of quarter and eighth notes. The piece concludes with a double bar line and repeat dots.

The Royal Sovereign. JJo4.078

Musical score for 'The Royal Sovereign' in G major, 3/8 time. It consists of four staves of music. The first two staves are the main melody. The third staff begins with a rest and the annotation 'rest added', followed by a melodic line with some slurs. The fourth staff continues the melody with a repeat sign at the end.

Scotch Ditty. JJo4.079

Musical score for 'Scotch Ditty' in G major, 6/8 time. It consists of four staves of music. The first two staves are the main melody. The third and fourth staves provide a rhythmic accompaniment with a repeating eighth-note pattern.

Maxwill's Rant. JJo4.080

Musical score for 'Maxwill's Rant' in B-flat major, 6/8 time. It consists of two staves of music. Both staves feature a complex, fast-paced melody with many slurs and trills, indicated by 'tr' markings above and below the notes.

Prussian Maggot. JJo.081

Musical score for 'Prussian Maggot. JJo.081' in G major and 2/4 time. It consists of four staves of music. The first staff begins with a treble clef, a key signature of one sharp (F#), and a 2/4 time signature. The melody is characterized by eighth-note patterns and a final trill. The second staff continues the melody with a repeat sign at the end. The third staff starts with a repeat sign and includes a trill marked 'tr'. The fourth staff concludes the piece with a final cadence.

Prussian Maggot. 2nd Tune. JJo.082

Musical score for 'Prussian Maggot. 2nd Tune. JJo.082' in B-flat major and 2/4 time. It consists of four staves of music. The first staff begins with a treble clef, a key signature of two flats (Bb, Eb), and a 2/4 time signature. The melody features eighth-note runs and a repeat sign at the end of the second staff. The third staff includes a key signature change to one sharp (F#) for a brief section. The fourth staff concludes the piece.

The Veteran. JJo.083

Musical score for 'The Veteran. JJo.083' in B-flat major and 6/8 time. It consists of four staves of music. The first staff begins with a treble clef, a key signature of two flats (Bb, Eb), and a 6/8 time signature. The melody is slower and includes trills marked 'tr'. The second staff continues with another trill. The third and fourth staves complete the piece with a final cadence.

None like it. JJo.084

Two staves of musical notation for the piece 'None like it. JJo.084'. The music is written in treble clef with a key signature of two sharps (F# and C#) and a 3/8 time signature. The first staff begins with a quarter rest followed by a series of eighth and sixteenth notes. A trill (tr) is indicated above a note in the second measure. The second staff starts with a repeat sign and continues with similar rhythmic patterns, also featuring a trill.

The Assination. JJo.085

Four staves of musical notation for the piece 'The Assination. JJo.085'. The music is written in treble clef with a key signature of one flat (Bb) and a 6/8 time signature. The first staff features a series of eighth and sixteenth notes. The second staff continues the melody with similar rhythmic patterns. The third staff begins with a repeat sign and includes a dotted quarter note. The fourth staff concludes the piece with a final cadence.

Miss Murry's Reel. JJo.086

Three staves of musical notation for the piece 'Miss Murry's Reel. JJo.086'. The music is written in treble clef with a key signature of one flat (Bb) and a 6/8 time signature. The first staff starts with a quarter rest followed by eighth and sixteenth notes. The second staff begins with a repeat sign and features a series of eighth notes. The third staff continues the melody with similar rhythmic patterns.

Duke William for Ever. JJo.087

Musical score for 'Duke William for Ever. JJo.087' in G major, 2/4 time. The score consists of four staves of music. The first staff begins with a treble clef, a key signature of one sharp (F#), and a common time signature. The melody is written in a simple, rhythmic style. The second staff features a trill (tr) over a note in the final measure. The third staff starts with a repeat sign and includes another trill (tr) over a note. The fourth staff concludes the piece with a final cadence.

Duke William for Ever. 2nd Tune. JJo.088

Musical score for 'Duke William for Ever. 2nd Tune. JJo.088' in G minor, 2/4 time. The score consists of five staves of music. The first staff begins with a treble clef, a key signature of two flats (Bb, Eb), and a common time signature. The melody is written in a simple, rhythmic style. The second staff features a trill (tr) over a note. The third staff starts with a repeat sign and includes a trill (tr) over a note. The fourth staff features a trill (tr) over a note. The fifth staff concludes the piece with a final cadence.

The Croat. JJo.089

Musical notation for 'The Croat. JJo.089' in G major, 2/4 time. It consists of four staves of music. The first staff begins with a treble clef, a key signature of one sharp (F#), and a common time signature (C). The melody is written in a simple, folk-like style with quarter and eighth notes. The second staff continues the melody and ends with a double bar line and repeat dots. The third and fourth staves provide a rhythmic accompaniment, primarily using quarter notes and eighth notes.

Wet and weary. JJo.090

Musical notation for 'Wet and weary. JJo.090' in G major, 6/8 time. It consists of two staves of music. The first staff begins with a treble clef, a key signature of one sharp (F#), and a 6/8 time signature. The melody is characterized by a steady eighth-note rhythm. The second staff continues the melody and ends with a double bar line and repeat dots.

The Pandour. JJo.091

Musical notation for 'The Pandour. JJo.091' in G major, 2/4 time. It consists of two staves of music. The first staff begins with a treble clef, a key signature of one sharp (F#), and a 2/4 time signature. The melody features a mix of quarter and eighth notes. The second staff continues the melody and ends with a double bar line and repeat dots.

Queen's Burry House. JJo.092
Down the Bank, aka. JJo.092

Musical notation for 'Queen's Burry House. JJo.092' in G major, 2/4 time. It consists of two staves of music. The first staff begins with a treble clef, a key signature of one sharp (F#), and a common time signature (C). The melody is written in a simple, folk-like style with quarter and eighth notes. The second staff continues the melody and ends with a double bar line and repeat dots.

The Northern Lass. JJo.093

Musical score for 'The Northern Lass' in G major, 2/4 time. It consists of four staves of music. The first staff begins with a treble clef, a key signature of one sharp (F#), and a common time signature. The melody is composed of eighth and sixteenth notes, with some triplet markings. The second and third staves continue the melody with repeat signs at the beginning. The fourth staff concludes the piece with a double bar line and repeat dots.

Kick the Scrubs out. JJo.094

Musical score for 'Kick the Scrubs out' in D major, 3/8 time. It consists of two staves of music. The first staff begins with a treble clef, a key signature of two sharps (F# and C#), and a 3/8 time signature. The melody features eighth and sixteenth notes, with a trill (tr) marking at the end. The second staff continues the melody with repeat signs and another trill marking.

Gentleman Volunteer. JJo.095

Musical score for 'Gentleman Volunteer' in G major, 2/4 time. It consists of five staves of music. The first staff begins with a treble clef, a key signature of one sharp (F#), and a common time signature. The melody is composed of eighth and sixteenth notes. The second and third staves continue the melody with repeat signs. The fourth staff includes a trill (tr) marking. The fifth staff concludes the piece with a double bar line and repeat dots.

The Battle of Culloden. JJo.096

Two staves of musical notation for 'The Battle of Culloden. JJo.096'. The first staff is in treble clef with a key signature of one sharp (F#) and a common time signature (C). The second staff is in treble clef with a key signature of two sharps (F# and C#) and a common time signature (C). Both staves end with a double bar line and repeat dots.

British Hero. JJo.097

Six staves of musical notation for 'British Hero. JJo.097'. All staves are in treble clef with a key signature of two flats (Bb and Eb) and a common time signature (C). The notation includes various rhythmic values and rests, with the final staff ending with a double bar line and repeat dots.

Broad Bottom. JJo.098

Four staves of musical notation for 'Broad Bottom. JJo.098'. All staves are in treble clef with a key signature of two sharps (F# and C#) and a 3/8 time signature. The notation includes various rhythmic values and rests, with the final staff ending with a double bar line and repeat dots. The text 'D.C.' is written at the end of the fourth staff.

The Honey Moon. JJo.099

Musical score for "The Honey Moon" (JJo.099). The score is written in 6/8 time and B-flat major. It consists of four staves of music. The first staff begins with a treble clef and a 6/8 time signature. The music features a mix of eighth and sixteenth notes, with a trill (tr) in the second staff. The piece concludes with a double bar line and repeat dots.

The Curiosity. JJo.100

Musical score for "The Curiosity" (JJo.100). The score is written in 2/8 time and B-flat major. It consists of three staves of music. The first staff begins with a treble clef and a 2/8 time signature. The music features a mix of eighth and sixteenth notes, with a sharp sign (#) above a note in the first staff. The piece concludes with a double bar line and repeat dots.

The Rout. JJo.101

Musical score for "The Rout" (JJo.101). The score is written in 6/8 time and B-flat major. It consists of four staves of music. The first staff begins with a treble clef and a 6/8 time signature. The music features a mix of eighth and sixteenth notes, with a sharp sign (#) above a note in the second staff. The piece concludes with a double bar line and repeat dots.

Culloden Chace. JJo.102

Two staves of musical notation for the piece 'Culloden Chace. JJo.102'. The first staff is in treble clef with a key signature of one flat (Bb) and a common time signature (C). The second staff is in bass clef with the same key signature and time signature. The music consists of eighth and sixteenth notes, with some triplets and a repeat sign at the end of the first staff.

Kiss at the Garden Gate. JJo.103

Six staves of musical notation for the piece 'Kiss at the Garden Gate. JJo.103'. The first staff is in treble clef with a key signature of one flat (Bb) and a 3/8 time signature. The subsequent five staves are in treble clef with a key signature of one sharp (F#) and a 3/8 time signature. The music is primarily composed of eighth notes and quarter notes, with some slurs and a repeat sign at the end of the first staff.

Nothing to do. JJo.104

Four staves of musical notation for the piece 'Nothing to do. JJo.104'. The first staff is in treble clef with a key signature of one flat (Bb) and a 2/4 time signature. The subsequent three staves are in treble clef with a key signature of one flat (Bb) and a 2/4 time signature. The music is primarily composed of quarter notes and eighth notes, with some slurs and a repeat sign at the end of the first staff.

Royal Hunters. JJo.105

Musical score for 'Royal Hunters. JJo.105' in G major, 2/4 time. The score consists of six staves of music. The first two staves are the main melody, and the last two staves are the bass line. The piece features several trills, indicated by 'tr' above notes in the third and fourth staves. The key signature has one sharp (F#) and the time signature is 2/4. The piece concludes with a double bar line and repeat dots.

Critical Minute. JJo.106

Musical score for 'Critical Minute. JJo.106' in G major, 2/4 time. The score consists of four staves of music. The first two staves are the main melody, and the last two staves are the bass line. The piece concludes with a double bar line, a key signature change to F major (indicated by a flat sign), and the instruction 'D.C.' (Da Capo). The key signature has one sharp (F#) and the time signature is 2/4.

Weaverretti's Delight. JJo.107

Musical score for 'Weaverretti's Delight. JJo.107'. The piece is in G minor (one flat) and common time. It consists of three staves of music. The first staff begins with a triplet of eighth notes (G4, A4, B4) and continues with a series of eighth and sixteenth notes. The second staff features more triplet figures and a repeat sign with a first ending. The third staff concludes with a double bar line and a 'D.C.' (Da Capo) instruction.

Full Bottom Wigg. JJo.108

Musical score for 'Full Bottom Wigg. JJo.108'. The piece is in G minor (one flat) and 2/8 time. It consists of three staves of music. The first staff starts with a rhythmic pattern of eighth and sixteenth notes. The second and third staves continue this pattern with various rhythmic variations and repeat signs.

As you like me. JJo.109

Musical score for 'As you like me. JJo.109'. The piece is in G major (one sharp) and 2/4 time. It consists of six staves of music. The first staff includes a trill (tr) over a note. The second and third staves feature rhythmic patterns with repeat signs. The fourth and fifth staves continue the melodic and rhythmic development. The sixth staff concludes the piece with a final cadence.

The Cappuchine. JJo.110

Musical score for 'The Cappuchine' in 2/4 time, key of D major. The score consists of four staves of music. The first staff begins with a treble clef, a key signature of two sharps (F# and C#), and a 2/4 time signature. The melody is composed of eighth and quarter notes, with some dotted rhythms. The second staff continues the melody, ending with a double bar line and repeat dots. The third and fourth staves provide a rhythmic accompaniment using eighth and quarter notes.

The Widow's Choice. JJo.111

Musical score for 'The Widow's Choice' in 6/8 time, key of D major. The score consists of four staves of music. The first staff begins with a treble clef, a key signature of two sharps (F# and C#), and a 6/8 time signature. The melody is primarily composed of eighth and sixteenth notes. The second, third, and fourth staves provide a rhythmic accompaniment using eighth and sixteenth notes, with some rests and accidentals.

Broad as Long. JJo.112

Musical score for 'Broad as Long. JJo.112' in G major, 2/4 time. The score consists of six staves of music. The first staff begins with a treble clef, a key signature of one sharp (F#), and a 2/4 time signature. The melody is characterized by a wide interval between the first and second notes of the first measure. The piece concludes with a double bar line and repeat dots.

Scotch Bonnet. JJo.113

Musical score for 'Scotch Bonnet. JJo.113' in G major, 2/4 time. The score consists of six staves of music. The first staff begins with a treble clef, a key signature of one sharp (F#), and a 2/4 time signature. The melody features a rhythmic pattern of eighth and sixteenth notes. A trill (tr) is indicated above the final note of the first staff. The piece concludes with a double bar line and repeat dots.

Scotch Keel. JJo.114

Musical score for 'Scotch Keel. JJo.114' in G major (one sharp) and 2/4 time. The score consists of four staves. The first staff begins with a treble clef and a key signature of one sharp (F#). The melody features eighth and sixteenth notes, with a trill (tr) indicated above the fourth measure. The piece concludes with a double bar line and repeat dots.

Long live the King. JJo.115

Musical score for 'Long live the King. JJo.115' in B-flat major (two flats) and 2/4 time. The score consists of six staves. The first staff begins with a treble clef and a key signature of two flats (B-flat and E-flat). The melody is characterized by eighth and sixteenth notes. The sixth staff includes the instruction 'Last strain but once' above the final measure.

Minuet

Musical score for 'Minuet' in B-flat major (two flats) and 3/4 time. The score consists of three staves. The first staff begins with a treble clef and a key signature of two flats (B-flat and E-flat). The melody is primarily composed of quarter notes. The third staff includes a trill (tr) above the final measure.

Glover's Stone. JJo.116

Two staves of musical notation for 'Glover's Stone. JJo.116'. The first staff begins with a treble clef, a key signature of one sharp (F#), and a common time signature (C). The melody consists of eighth and sixteenth notes with various rests and slurs. The second staff continues the melody, featuring a repeat sign at the beginning and ending with a double bar line and repeat dots.

Loyalist. JJo.117

Eight staves of musical notation for 'Loyalist. JJo.117'. The first staff uses a treble clef, a key signature of one flat (Bb), and a common time signature (C). The second staff continues the melody. The third staff begins with a repeat sign. The fourth staff continues the melody and ends with a key signature change to two sharps (F# and C#). The fifth staff changes to a 3/4 time signature and continues the melody. The sixth staff continues the melody. The seventh staff continues the melody. The eighth staff concludes the piece with a trill (tr) over a note and a final double bar line with repeat dots.

Trip to Chester. JJo.118

Musical score for 'Trip to Chester. JJo.118'. The score is written in treble clef, 3/8 time, and G major. It consists of three staves. The first staff contains the main melody. The second staff contains a rhythmic accompaniment with many beamed eighth notes. The third staff contains a bass line with eighth notes. The piece ends with a double bar line and repeat dots.

Petticoat Loose. JJo.119

Musical score for 'Petticoat Loose. JJo.119'. The score is written in treble clef, 3/8 time, and B-flat major. It consists of six staves. The first staff contains the main melody. The second staff contains a rhythmic accompaniment with many beamed eighth notes. The third, fourth, and fifth staves contain a bass line with eighth notes. The sixth staff contains a final bass line with a sharp sign on the second measure. The piece ends with a double bar line and repeat dots.

Scratch it. JJo.120

Musical score for 'Scratch it. JJo.120'. The score is written in treble clef, 3/8 time, and D major. It consists of two staves. The first staff contains the main melody. The second staff contains a rhythmic accompaniment with many beamed eighth notes. The piece ends with a double bar line and repeat dots.

Richbel's Drums. JJo4.121

The musical notation for 'Richbel's Drums' consists of four staves. The first staff begins with a treble clef, a key signature of one sharp (F#), and a 6/8 time signature. The melody is written in a simple, rhythmic style. The second and third staves continue the melody with various note values and rests. The fourth staff concludes the piece with a double bar line and repeat dots.

First Man set to the 2d. Wo. and turn
 His Partner to the same with the 2d. Man
 Cross over and half figure
 Set and Right and Left

Duke of Cumberland. JJo4.122

The musical notation for 'Duke of Cumberland' consists of four staves. The first staff begins with a treble clef, a key signature of one sharp (F#), and a 6/8 time signature. It features a triplet of eighth notes marked with a '3' above the staff. The melody is rhythmic and includes various note values. The second and third staves continue the melody. The fourth staff concludes the piece with a double bar line and repeat dots.

The 1st Man sets to the 2d. Wo. and turns his own Partner
 The 1st Wo. does the same
 Gallop down and up again, foot it and cast off
 Right Hand and Left

Fiddler's Maggot. JJo4.123

First and 2d. Cu. fall back, sides foot it, cast off and turn
 Do the same back again
 Cross and figure
 Lead thro' the 3d. Cu. cast up right and left round with the 2d. Cu.

Culloden Fight. JJo4.124

First Cu. lead thro' the 2d. and outside 3d. meet and turn
 Then lead up the middle foot it a top and cast off
 Hands round with the top Cu.
 Lead thro' The 3d. Cu. cast up and down

Tast(e) A La Mode. JJo4.125

The musical score for 'Tast(e) A La Mode. JJo4.125' consists of five staves of music. The first staff begins with a treble clef, a key signature of one flat (B-flat), and a 6/8 time signature. The melody is written in a single line. The second and third staves continue the melody with similar rhythmic patterns. The fourth and fifth staves conclude the piece with repeat signs and final notes.

First and 2d. Cu. hands across
 Then cast off and turn your Partner
 Lead thro' the 3d. cast up and turn your Partner
 Lead up and cast off and turn

Bowl Away. JJo4.126

The musical score for 'Bowl Away. JJo4.126' consists of four staves of music. The first staff begins with a treble clef, a key signature of three sharps (F#, C#, G#), and a 2/4 time signature. The melody is written in a single line. The second and third staves continue the melody with similar rhythmic patterns. The fourth staff concludes the piece with a repeat sign and final notes.

First Cu. foot it down the middle and turn hands with the 3d. Cu.
 Lead up the middle and cast off and turn your Partner
 Foot it and lead thro' and cast up
 And right and left round with the top Cu.

The Merry Parson. JJo4.127



First Man foots it to the 2d. Woman and turns her
 Their Partners do the same
 The 1st Cu. cross over and half figure at Top, 1st and 2d. Cu. Right and Left quite round
 The 1st Cu. leads thro' the 3d. Cu. and turn

Quite Prodigious. JJo4.128



First and 2d. Men lead thro' sides and turn
 Their Partners do the same
 The 1st Cu. gallop down one Cu. gallop back again and cast off
 The 1st and 2d. Cu. Right and Left quite round

O'er the Hills to Betty. JJo4.129



(Note: fourth bar of second strain the 1st and third semiquavers are shown as appoggiaturas in the original)

First Cu. cast off, and lead thro' the 3d. Cu.

The 2d. Cu. does the same

The 1st Man change Places with the 2d. Wo. their Partners do the same.

All four clap your own Hands, and go round to your own Places

The 1st Cu. leads below the 2d. Cu. Lead back again. 1st and 2d. Cu. Right and Left half round

The Ladies Maggot. JJo4.130



First Cu. cast off and turn

Cast off again and turn

The 1st Cu. gallop up to the Top and cast off

The 1st and 2d. Cu. Right and Left quite round

Pennington's Maggot. JJo4.131

First Cu. clap hands foot it and turn half round

The 1st Man clap hands with 2d. Wo. foot it and turn half round, while the 1st Wo. does the same with 2d. M

All four hands across quite round

Cast up and right and left half round

Fortescue's Fancy. JJo4.132

First Cu. foot and cast off

The 2d. Cu. do the same

Cross over & all hands half round

The 2d. Cu. cross over into 1st Cu. Place, 1st Cu. leads thro' 2d. Cu. and cast off

Trip it up Stairs. JJo4.133

The musical notation for 'Trip it up Stairs' consists of four staves of music in G major (one sharp) and 6/8 time. The first two staves are simple eighth-note patterns. The third and fourth staves feature more complex rhythmic patterns, including sixteenth-note runs and repeated eighth-note figures.

First Cu. dance down and up between 2d. Cu. & cast off

The same with 3d. Cu.

All 6 join hands & dance round

The 1st Cu. dance to the Top foot & cast off into 2d. Cu. Place

The 1st Man dance to 3d. Wo. & turn, while 1st Wo. does the same with 2d. Man

The 1st Man foot to 2d. Wo. & turn, while 1st Wo. does the same with 3d. Man

The 1st Man, 2d. & 3d. Wo. fall back & hands round, the 1st Wo. do the same with 2d. & 3d. Men at the same time

Foot to your partner and turn

Ambigue. JJo4.134

The musical notation for 'Ambigue' consists of two staves of music in G major (one sharp) and 6/8 time. The first staff features a simple eighth-note melody, while the second staff features a more complex pattern with repeated eighth-note figures and a final cadence.

First Man set to 2d. Wo.

The 1st Wo. set to 2d. Man

The 1st Cu. gallop down and up

Cast off into 2d. Cu. Place

The Esquire's Jigg. JJo4.135

The musical notation for 'The Esquire's Jigg. JJo4.135' consists of four staves of music. The first staff begins with a treble clef, a key signature of one sharp (F#), and a 6/8 time signature. The melody is written in a single line. The second and third staves continue the melody, with the third staff starting with a repeat sign. The fourth staff concludes the piece with a final cadence.

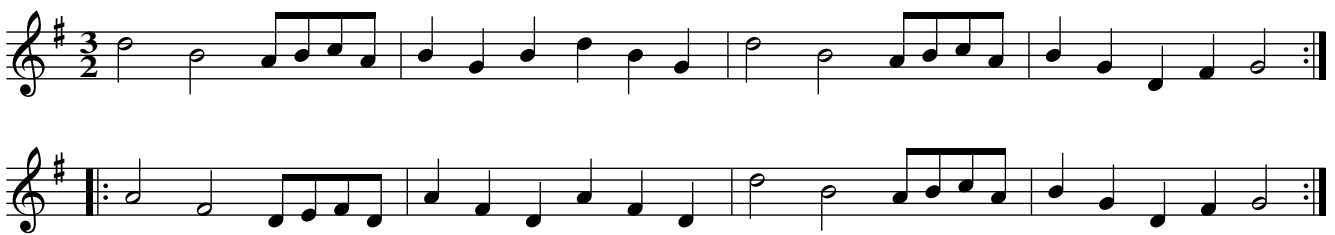
First Man heys with his Partner, and the 2d. Wo.
 The 1st Wo. does the same with her Partner and the 2d. Man
 The 1st Cu. gallop down, gallop up again and cast of
 The 1st and 2d. Cu. Right and Left quite round

The Dorset. JJo4.136

The musical notation for 'The Dorset. JJo4.136' consists of four staves of music. The first staff begins with a treble clef, a key signature of one sharp (F#), and a 6/8 time signature. The melody is written in a single line. The second and third staves continue the melody, with the third staff starting with a repeat sign. The fourth staff concludes the piece with a final cadence.

First Cu. cast off and hands quite round with 3d. Cu.
 The 2d. Cu. does the same
 The 1st Man heys on the Wo. side, 1st Wo. at the same time heys on the Man's side
 The 1st Cu. foot it Right and Left quite round

Sadler's Wells. JJo4.137



First Man foot to 2d. Wo. and change Places
 The 1st Wo. do the same to 2d. Man
 The 1st Cu. cross thro' 2d. Cu. and cast off
 The 2d. Cu. cross thro' 1st Cu. and cast up
 The 1st Cu. set to 2d. Man and turn
 Then to 2d. Wo. and turn
 Cross thro' 3d. Cu. and cast up
 Lead thro' 2d. Cu. and cast down.

Trip to Lairey. JJo4.138



First Cu. foot to 2d. Wo. and turn
 Then foot to 2d. Man and turn
 Cross over two Cu.
 Lead up to the Top and cast off

Trip to Dublin. JJo4.139



First Man set to the 2d. Wo. and turn
 His Partner the same with the 2d. Man
 Cross over and half figure
 Set 4 and Right and Left

The Association. JJo4.140



First Cu. foot it cast off and half turn improper with the 3d. Cu.
 The 2d. Cu. cross over and turn improper
 Hands 6 round proper, 1st Cu lead to the Top foot it and cast up

Sterling Castle. JJo4.141



First Cu. set to the 2d. Wo. and turn
 The same with the 2d. Man
 Cross over half figure Right and Left, 1st Man go the figure thro' the 3d. Cu his Partner at the same time, thr
 Set 3 at Top and 3 at Bottom an turn in the 2d. Cu. Place

Owen's Rant. JJo4.142



First Cu. foot it and cast off
 Right and Left with the 2d. Cu.
 Hands round with the 3d. Cu.
 And Lead thro' the 2d. Cu. cast off and turn

Rakes of West Meath. JJo4.143



First Man turn the 2d. Wo. single and then his Partner, his Partner the same
 Cross over below the 3d. Cu. and turn
 Lead to the top and cast off. Back to Back and Right and Left with the 2d. Cu.

Park Gate. JJo4.144



First Cu. foot it and cast off
 Whole figure with the 3d. Cu. foot it and Right and Left with the 2d. Cu

De'el Stick the Pretender. JJo4.145

The musical score for 'De'el Stick the Pretender' consists of six staves of music in 6/8 time. The key signature has one flat (B-flat). The melody is characterized by eighth and sixteenth notes, often beamed together. There are several trills and grace notes throughout the piece. The first staff begins with a treble clef and a 6/8 time signature. The piece concludes with a double bar line and repeat dots.

The 1st Cu. foot it and cast off two Cu.

And cross up to the top

Then lead down two Cu. and the 2d. Cu. follow, then clap hands and cast off one Cu.

Then lead thro' the bottom and cast up and lead thro' the top and cast off and right hands and left with the 3d

Wade's jig. JJo4.146

The musical score for 'Wade's jig' consists of four staves of music in 6/8 time. The key signature has two sharps (F# and C#). The melody is primarily composed of eighth notes, often beamed in groups of four. The piece concludes with a double bar line and repeat dots, followed by the instruction 'D.C.' (Da Capo).

(Note. Instruction is to repeat the first strain then play second once, return and end at the end of the first strain)

The 1st Man foot it twice to the 2d. Wo. and cast off and she cast up then foot it and cast into your own Place

Then the other two do the same

Then cross over and half figure with the 3d. Cu. and foot it and turn

Betty Bodkin. JJo4.147

First strain twice, second but once
 First Cu. set and back to back, cast off and turn
 Cast up again Back to Back and turn
 1st Cu. whole figure Right and Left sideways with the 2d. Cu.
 Cross over two Cu. and turn up again and turn, cast off. Lead thro' then Top. Cast off and turn it out.

Tottenham Loyalty. JJo4.148

First and 2d. Cu. cross hands 1/2 round. 1st Cu. cast off below 3d. Cu.
 Cross hands half round with 3d. Cu. and cast up into your own Places
 All six set and turn into your own Places
 The 1st Cu. cross over and half figure

Eastwell Park. JJo4.149



Each strain twice

First Man Right Arm round with the 2d. Wo. then left Arm with his Partner. 1st Wo. the same with the 2d. M

The 1st Man heys with the 1st and 2d. Wo. 1st Wo the same with the 1st and 2d. Men

The 1st Man and Wo. Monks March figure with the 1st Wo. & 2d. Man

The 1st Wo. and 2d. Man the same with the 1st Man & 2d. Wo.

The first Cu. set, cast off and hal figure again and turn it out.

Lasses of Charing. JJo4.150



(Note: time signature in original is 12/9)

Each strain twice

Set 4 right and left the same back again.

The 1st Cu. set to the 2d. Wo. & Turn, the same with the 2d. Man

Cast down two Cu. cross over one Cu. and turn

Cross the corners and turn then the other corners and turn it out

Castle of Comfort. JJo4.151

First Cu. foot it, cast off and turn that up again

Cross over 2 Cu. Back to Back and cast up, Lead thro' the 2d. Cu. then 3d, foot it twice and Right and Left

Dumont's Jigg. JJo4.152

First Cu. cast down one Cu.

And up again

First Man set to the 2d. Wo. 2d. Wo. do the same then turn your Partner at Top

All four foot it side ways and right and left

Castle Bar. JJo4.153

The musical score for 'Castle Bar. JJo4.153' consists of six staves of music. The key signature is one flat (Bb) and the time signature is 6/8. The music is written in a single melodic line across the staves, featuring a mix of eighth and sixteenth notes, with some triplet-like patterns. The piece concludes with a double bar line.

Each strain twice

First Cu. foot it and cast off, that again below the 3d. Cu. Lead to the Top, foot it and cast off.

Lead thro' the Bottom and then Top and cast off all 6 hands round, that back again. 1st Cu. Back to Back and

Mad Cap. JJo4.154

The musical score for 'Mad Cap. JJo4.154' consists of three staves of music. The key signature is one sharp (F#) and the time signature is 6/8. The music is written in a single melodic line across the staves, featuring a mix of eighth and sixteenth notes. The piece concludes with a double bar line.

(Note: Last F in bar 4 is F# in original)

Each strain twice

First Cu. Back to Back, foot it and cast off.

That again below the 3d. Cu.

The Wo. slip up the Middle, Man after her, cast off round the 2d. Man into her own Place

Miss Gould. JJo4.155

The musical score for 'Miss Gould. JJo4.155' consists of four staves of music. The first staff begins with a treble clef, a key signature of one sharp (F#), and a 6/8 time signature. The melody is composed of eighth and quarter notes. The second and third staves continue the melody with similar rhythmic patterns. The fourth staff concludes the piece with a final cadence, including a double bar line and repeat dots.

First and 2d. Cu. set, change Places
 Set again and half right and left
 Cross over and half figure with the 3d. Cu.
 Lead up to the Top, foot it and cast off.

Hob or Nob. JJo4.156

The Campbells are Coming, aka. JJo4.156

The musical score for 'Hob or Nob. JJo4.156' consists of four staves of music. The first staff begins with a treble clef, a key signature of one sharp (F#), and a 6/8 time signature. The melody is composed of eighth and quarter notes. The second and third staves continue the melody with similar rhythmic patterns. The fourth staff concludes the piece with a final cadence, including a double bar line and repeat dots.

The Man casts off one Cu. and the Wo. follows in the 2d. Cu. Place,
 The same back again to their Place.
 Cross over 2d. Cu. and lead up to the top, foot it, cast off
 Set to corners, lead out of both sides and turn your Partner

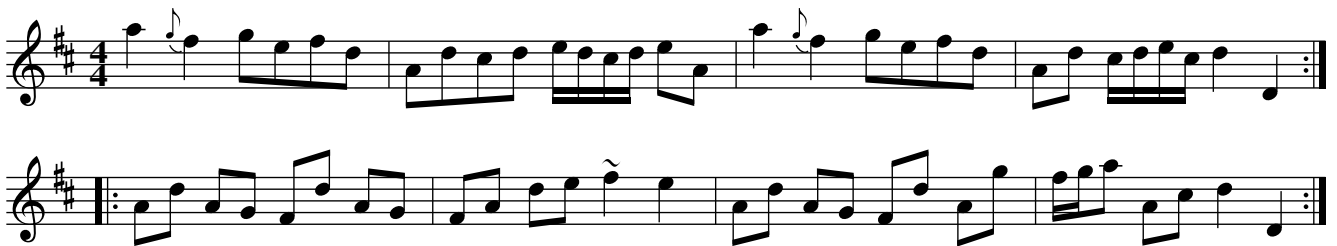
The Merry Councillor. JJo4.157



Last strain but once
 First Cu. lead thro' the 2d. and on the outside of the 3d. Cu. and turn
 Lead up to the Top and cast off
 Set 6 and turn Right and Left with the 2d. Cu

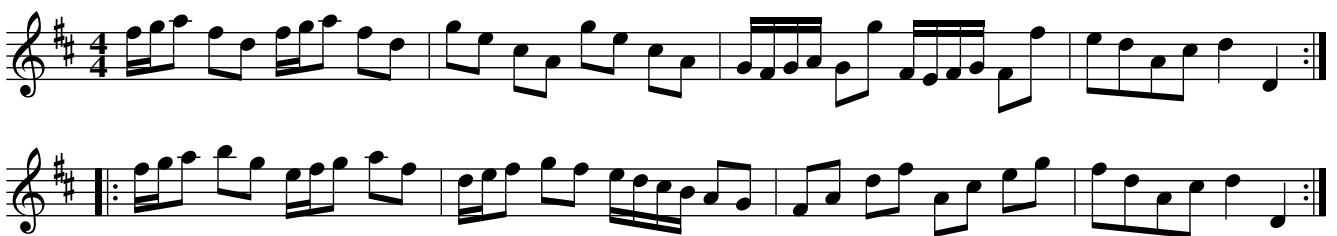
Trip to Farleigh. JJo4.158

La Fete de Village, aka. JJo4.158



(Note: the second note in 2nd and 4th bars is shown as an appoggiatura in the original)
 First Man set to the 2d. Wo. and turn
 His Partner the same with the 2d. Man
 Set 4 and turn
 Cross over and turn

Just a going. JJo4.159



First Cu. foot it, cast off and turn, the same up again
 Cross over 2 cu> Lead up to the Top and turn
 First and 2d. Cu. set and turn sideways. set again and cast up
 Cross over half figure and Right and Left

Trip to Twickenham. JJo4.160



Two 1st Cu. hands round

Back again

First Cu. lead thro' the 2d. Cu. and on the outside of the 3d. lead up to the Top and cast off

First Cu. Back to Back, Right and Left quite round.

What d'you think of He. JJo4.161



No. 13. JJo4.162



Rural Sports. JJo4.163

Musical score for 'Rural Sports. JJo4.163' in G major (one sharp) and 2/4 time. The score consists of four staves of music. The first staff contains the first strain, ending with a repeat sign. The second staff contains the second strain, ending with a trill (tr) and a repeat sign. The third staff contains the first strain, ending with a repeat sign. The fourth staff contains the second strain, ending with a trill (tr) and a repeat sign. A small asterisk (*) is placed above the final note of the fourth staff.

Each Strain twice

Mock Highland Man. JJo4.164

Musical score for 'Mock Highland Man. JJo4.164' in G major (one sharp) and 2/4 time. The score consists of four staves of music. The first two staves contain the first strain, ending with a repeat sign. The third staff contains the second strain, featuring a note with 'NB' above it and a trill (tr) below it, followed by three more trills (tr) on subsequent notes. The fourth staff contains the first strain, featuring two trills (tr) on the first two notes, followed by the rest of the strain ending with a repeat sign.

Each Strain twice

The Mackies. JJo4.165

Musical score for 'The Mackies' in G major, 6/8 time. The score consists of five staves. The first staff begins with a treble clef, a key signature of one sharp (F#), and a 6/8 time signature. The tempo marking 'Brisk' is placed above the third staff. The piece concludes with a double bar line and repeat dots. A '*' is placed above the end of the second staff, and a '**' is placed above the end of the fifth staff.

The Gnoll. JJo4.166

Musical score for 'The Gnoll' in G major, common time. The score consists of four staves. The first staff begins with a treble clef, a key signature of one sharp (F#), and a common time signature (C). The piece concludes with a double bar line and repeat dots.

Temple Shades. JJo4.167

Musical score for 'Temple Shades. JJo4.167' in G major (one sharp) and common time. The score consists of four staves of music. The first staff begins with a treble clef and a common time signature. The melody is written in a single line. The second staff continues the melody. The third staff includes a repeat sign at the beginning and a trill (tr) above the final note. The fourth staff concludes the piece with an asterisk (*) above the final note.

Each Strain twice

Trip to Dulwich. JJo4.168

Musical score for 'Trip to Dulwich. JJo4.168' in G major (one sharp) and 3/8 time. The score consists of four staves of music. The first staff begins with a treble clef and a 3/8 time signature. The melody is written in a single line. The second staff includes the instruction 'sic' above a note and a trill (tr) above the final note. The third staff continues the melody. The fourth staff concludes the piece with a trill (tr) above the final note and an asterisk (*) above it.

Bed Chamber. JJo4.169

Musical score for 'Bed Chamber. JJo4.169' in G major, 6/8 time. The score consists of five staves. The first staff begins with a treble clef and a key signature of one sharp (F#). The second staff continues the melody. The third staff features a 3/8 time signature change and includes a first ending bracket marked with an asterisk (*). The fourth staff includes a second ending bracket marked with two asterisks (**). The fifth staff concludes the piece with a final cadence marked with two asterisks (**).

Last Strain but once and Repeat

Midnight Frolick. JJo4.170

Musical score for 'Midnight Frolick. JJo4.170' in G major, 6/8 time. The score consists of four staves. The first staff begins with a treble clef and a key signature of one sharp (F#). The second staff continues the melody. The third staff features a first ending bracket. The fourth staff concludes the piece with a final cadence marked with an asterisk (*).

Love in a Forrest. JJo4.171

Musical score for 'Love in a Forrest. JJo4.171'. The score consists of eight staves of music in treble clef, 3/8 time, with a key signature of two sharps (F# and C#). The music features a mix of eighth and sixteenth notes, with some rests and repeat signs. The final staff ends with an asterisk (*).

Each Strain twice

Mistake. JJo4.172

Musical score for 'Mistake. JJo4.172'. The score consists of four staves of music in treble clef, 3/8 time, with a key signature of one sharp (F#). The music features a mix of eighth and sixteenth notes, with some rests and repeat signs. The second and fourth staves include trills (tr) and the fourth staff ends with an asterisk (*).

Bucks Contention. JJo4.173

Musical score for 'Bucks Contention. JJo4.173'. The score is written in treble clef with a key signature of one flat (Bb) and a time signature of 6/8. It consists of five staves of music. The first staff begins with a treble clef, a key signature of one flat, and a 6/8 time signature. The music features a mix of eighth and sixteenth notes. The second staff ends with a double bar line and repeat dots. The third staff begins with a repeat sign. The fourth staff contains a sharp sign (#) above a note. The fifth staff ends with a double bar line and a repeat sign, followed by an asterisk (*).

So she bid me tell you. JJo4.174

Musical score for 'So she bid me tell you. JJo4.174'. The score is written in treble clef with a key signature of one sharp (F#) and a time signature of 6/8. It consists of four staves of music. The first staff begins with a treble clef, a key signature of one sharp, and a 6/8 time signature. The music features a mix of eighth and sixteenth notes. The second staff ends with a double bar line and repeat dots. The third staff begins with a repeat sign. The fourth staff ends with a double bar line and repeat dots.

Beverly School Boys. JJo4.175

Musical score for 'Beverly School Boys. JJo4.175'. The score is written in treble clef with a key signature of one flat (Bb) and a time signature of 2/4. It consists of three staves of music. The first staff begins with a treble clef, a key signature of one flat, and a 2/4 time signature. The music features a mix of eighth and sixteenth notes. The second staff begins with a repeat sign. The third staff ends with a double bar line and repeat dots.

Topsey Turvey. JJo4.176



New Long Room at Scarborough. JJo4.177



Amorous Goddess. JJo4.178



The Humours of Hillsborough. JJo4.179

Musical score for 'The Humours of Hillsborough' in G major, 6/8 time. It consists of four staves of music. The first staff is the melody, followed by three accompaniment staves. The piece concludes with a double bar line and repeat dots.

Shrewsbury Rakes. JJo4.180

Musical score for 'Shrewsbury Rakes' in B-flat major, 6/8 time. It consists of two staves of music. The first staff is the melody, and the second is the accompaniment. The piece concludes with a double bar line and repeat dots.

Taste of the Town. JJo4.181

Musical score for 'Taste of the Town' in B-flat major, 6/8 time. It consists of two staves of music. The first staff is the melody, featuring a trill (tr) on the final note. The second staff is the accompaniment. The piece concludes with a double bar line and repeat dots, and an asterisk (*) above the final measure.

Taste of the Town. 2d Part JJo4.182

Musical score for 'Taste of the Town, 2d Part' in B-flat major, 3/4 time. It consists of two staves of music. The first staff is the melody, and the second is the accompaniment. The piece concludes with a double bar line and repeat dots, and an asterisk (*) above the final measure.

Each strain twice

Irish Baulk. JJo4.183

Musical score for 'Irish Baulk. JJo4.183'. The score is written in treble clef with a key signature of one sharp (F#) and a time signature of 6/8. It consists of four staves of music. The melody is characterized by eighth and sixteenth notes, with some rests and a final cadence.

The Tune is to be play'd twice over

Dunkellin Lasses. JJo4.184

Musical score for 'Dunkellin Lasses. JJo4.184'. The score is written in treble clef with a key signature of one sharp (F#) and a time signature of common time (C). It consists of four staves of music. The melody is characterized by eighth and sixteenth notes, with some rests and a final cadence. The score includes repeat signs and a double bar line with a repeat sign at the end of the first staff.

Each Strain twice

Edinburgh Castle. JJo4.185

Musical notation for 'Edinburgh Castle. JJo4.185'. It consists of four staves of music in treble clef, key of D major (one sharp), and common time (C). The first staff begins with a C4 quarter note, followed by a series of eighth and sixteenth notes. The second and third staves start with repeat signs. The fourth staff also begins with a repeat sign and ends with a double bar line and repeat dots.

Each strain twice

Scotch Collops. JJo4.186

Musical notation for 'Scotch Collops. JJo4.186'. It consists of four staves of music in treble clef, key of D major (one sharp), and 2/4 time. The first staff begins with a D4 quarter note, followed by eighth and sixteenth notes. The second and third staves start with repeat signs. The fourth staff also begins with a repeat sign and ends with a double bar line and repeat dots, with an asterisk (*) above the final measure.

Putney Bowling Green. JJo4.187

Musical score for Putney Bowling Green. JJo4.187. The score consists of four staves of music in treble clef, 3/8 time signature, and a key signature of two sharps (F# and C#). The melody is primarily eighth-note based. The first staff contains the first four measures. The second staff contains the next four measures. The third staff contains the next four measures. The fourth staff contains the final four measures, ending with a double bar line and repeat dots, and a small asterisk (*) above the staff.

Tar Water. JJo4.188

Musical score for Tar Water. JJo4.188. The score consists of two staves of music in treble clef, common time (C), and a key signature of one sharp (F#). The melody is primarily eighth-note based. The first staff contains the first four measures. The second staff contains the next four measures, ending with a double bar line and repeat dots, and a small asterisk (*) above the staff.

New Shields. JJo4.189
Sailor's Wife, aka. JJo4.189

Musical score for New Shields. JJo4.189. The score consists of four staves of music in treble clef, 6/8 time signature, and a key signature of one flat (Bb). The melody is primarily quarter-note based. The first staff contains the first four measures, with a trill (*tr*) above the first measure. The second staff contains the next four measures, with a trill (*tr*) above the first measure. The third staff contains the next four measures, with trills (*tr*) above the second and eighth measures. The fourth staff contains the final four measures, ending with a double bar line and repeat dots, and a small asterisk (*) above the staff.

Give me Love and Liberty. JJo4.190

Two staves of musical notation for the piece 'Give me Love and Liberty. JJo4.190'. The first staff begins with a treble clef, a key signature of two sharps (F# and C#), and a common time signature (C). The melody consists of eighth and sixteenth notes. The second staff continues the melody with similar rhythmic patterns and includes repeat signs at the beginning and end.

French Warr. JJo4.191

Three staves of musical notation for the piece 'French Warr. JJo4.191'. The first staff begins with a treble clef, a key signature of one flat (Bb), and a common time signature (C). The melody is primarily composed of eighth notes. The second and third staves continue the piece, with the third staff ending with a repeat sign and an asterisk (*).

Miss Drake's Delight. JJo4.192

Two staves of musical notation for the piece 'Miss Drake's Delight. JJo4.192'. The first staff begins with a treble clef, a key signature of one sharp (F#), and a 2/4 time signature. The melody features a mix of eighth and sixteenth notes. The second staff continues the piece and ends with a repeat sign and an asterisk (*).

Blithsome Round. JJo4.193

Four staves of musical notation for the piece 'Blithsome Round. JJo4.193'. The first staff begins with a treble clef, a key signature of one sharp (F#), and a common time signature (C). The melody is mostly quarter notes. The second and third staves continue the piece, with the third staff ending with a repeat sign and an asterisk (*). The fourth staff concludes the piece with a final note and a repeat sign.

Blithsome Round. 2d Part JJo4.194

The Plain Dealer. JJo4.195

Each Strain twice

Sanctified Sue. JJo4.196

Musical notation for Sanctified Sue. JJo4.196, consisting of four staves of music in 6/8 time, key of B-flat major. The first staff begins with a treble clef and a key signature of one flat. The second staff continues the melody. The third staff starts with a repeat sign. The fourth staff ends with a repeat sign and an asterisk.

Each Strain twice

City Ramble. JJo4.197

Musical notation for City Ramble. JJo4.197, consisting of two staves of music in 3/8 time, key of D major. The first staff begins with a treble clef and a key signature of two sharps. The second staff starts with a repeat sign and ends with an asterisk.

Each Strain twice

The Humours of Dublin, JJo4.198

Musical notation for The Humours of Dublin, JJo4.198, consisting of three staves of music in 6/8 time, key of B-flat major. The first staff begins with a treble clef and a key signature of one flat. The second staff starts with a repeat sign. The third staff ends with a repeat sign and an asterisk.

Each Strain twice

Whiteman's Hornpipe. JJo4.199

Musical score for Whiteman's Hornpipe, JJo4.199. The score is written in 3/2 time and B-flat major. It consists of four staves of music. The first staff begins with a half note G4. The second staff contains trills (tr) over several notes. The third staff starts with a repeat sign. The fourth staff concludes with a double bar line and repeat dots.

The Merry Gamesters. JJo4.200

Musical score for The Merry Gamesters, JJo4.200. The score is written in 3/2 time and B-flat major. It consists of four staves of music. The first staff begins with a half note G4. The second staff contains trills (tr) and triplets (3). The third staff starts with a repeat sign. The fourth staff concludes with a double bar line and repeat dots.