

## The Hessian Dance. Ca1758.025

Presto

The 1st Man cast off and turn the 3d. Wo.  
 .| his Partner do the same with the 3d. Man  
 :| Lead thro' the top and cast off .| Lead  
 thro' the Bottom and cast up :| Back to  
 Back .| and Right and Left :|

## The Extempore. Ca1758.026

The 1st. Cu. cross over two Cu. .| cross  
 up again :| Lead down two Cu. and  
 cast up one .| Lead thro' the top and  
 cast off :| hand 4 with 3d. Cu. .| and  
 Right and Left at top :|

## Lord Boyd's Reel. Ca1758.027



The 1st. Cu. cast off two Cu. .| lead up to the top and cast off :| then set contrary Corners and not turn but set Partners .| the other Corners the same :| then turn contrary Corners with Right hands and Partners with Left .| the other corners the same :| then lead thro' Bottom and top cast off and turn :|

## We'll all be merry before we go. Ca1758.028

The 1st. Man half figure round the 2d. Man and the 2d. Wo. half figure round the 1st. Wo. at the same time .| the 1st. Wo. and 2d. Man do the same :| the 1st. Cu. gallop down two Cu. up again and cast off .| the 2d. Cu. do the same :| Cross over half figure .| Right and Left :|

## Miss Cartwright's March. Ca1758.029

The 1st. Cu. cast off one Cu. and the Man  
hands round with the 3d. Cu. and the Wo.  
with the 2d. Cu. at the same Time .| the  
Man heys with the 3d. Cu. and the Wo. with  
the 2d. Cu. :| Hands six round .| and Right and Left at top :|

## Arne's Jigg. Ca1758.030

The 1st. and 2d. Cu Right and left  
half round .| the same back again :|  
then set contrary Corners and turn  
the other Corners the same .| Back  
to Back with your Partner & Right  
and Left at top :|

## Trip to Ninny. Ca1758.031

keysig 2 sharps in MS

The 1st. Cu. cross over and turn .| Cross  
 up again and turn :| set across and turn  
 .| the Wo. do the same :| Hands across  
 all 4 .| and back again :| Cross over  
 two Cu. lead up to the top foot it and  
 cast off:|

## Merry Polley. Ca1758.032

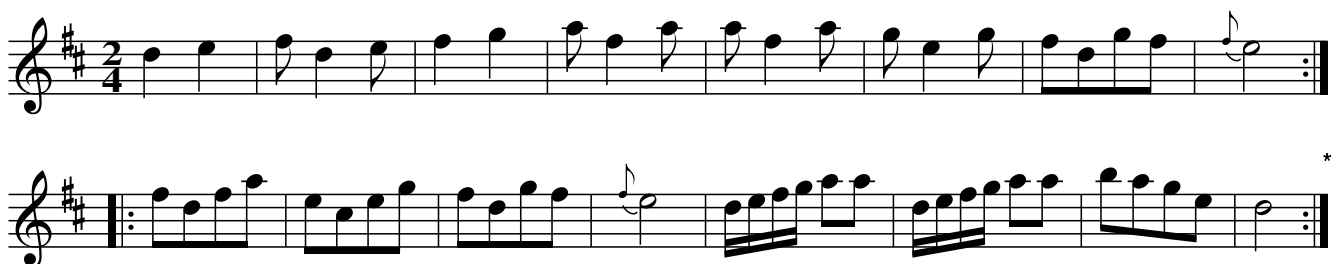
The 1st. Cu. lead thro' the 2d. Cu.  
 and cast up .| Back to Back & cast  
 off :| hands round with the 2d.  
 Cu. .| and Right and Left :|

## De'l take the Wars. Ca1758.033



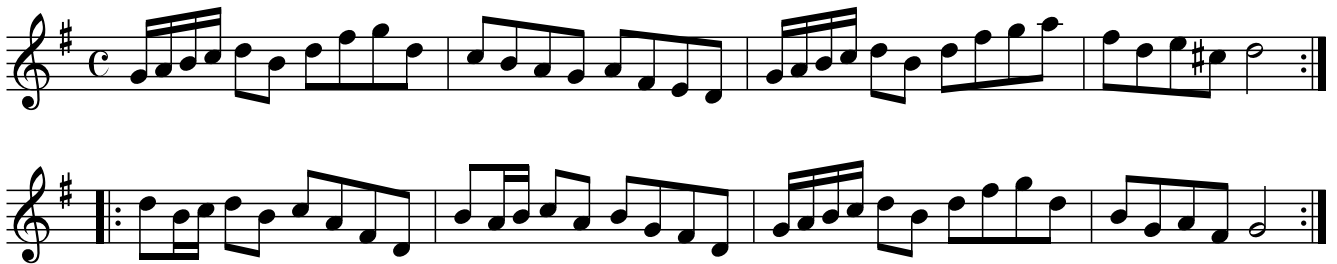
The 1st. Cu. cross over and turn the 2d. Cu. do the same .|  
 the 1st. Man heys on his own side turn his Partner with  
 his Right hand into his own Place the 2d. Man with his  
 Left in his Partners Place then the 2d. Wo. then the 3d. Man  
 and turn the 3d. Wo. with both hands into contrary Places :|  
 the 1st. Wo. heys on her own side then turn Right hand  
 Left untill she has replaced them into their own Places and  
 turns her Partner with both hands :|  
 NB To begin again Lead up one Cu. and cast off and turn.  
 First Strain once. (unable to read this line)

## Hessian Camp. Ca1758.034



The 1st. and 2d Cu. Right hands across .|  
 Left back again :| gallop down and up and cast  
 off .| and Right and Left at top :|

## A Trip to Hanover. Ca1758.035



The 1st. Cu. lead down the 2d. Cu. &  
cross over the 3d. Cu. .| the same back  
again :| Right hands across all 4 .|  
the same back again :|

## The Trip to Hanover (2d. Part). Ca1758.036



The 1st. Cu. set and turn .| change  
sides foot it and turn :| cast off  
half figure and Right and Left :|

## Roderhithe Assembly. Ca1758.037

The 1st. Man foot it twice to the 2d. Wo. He cast off  
and the Wo. cast up set and cast into your own Places  
again .| 1st. Wo. and 2d. Man do the same :| the  
two Men lead between the two We. and foot it .|  
the two We. do the same :| the 1st. Cu. heys with the  
2d. Wo. .| then with the 2d. Man :| gallop down  
and up cast off .| and Right and Left :|

## Pompey. Ca1758.038

The 1st Man set cross & turn  
.| the Wo. do the same :| cross  
over half figure .| Right and  
Left :| Set contrary Corners  
and turn .| the other Corners  
the same :| Lead out Sides  
and turn :|

## Bob Sanders. Ca1758.039

The musical notation for 'Bob Sanders. Ca1758.039' consists of four staves of music. The key signature is G major (one sharp) and the time signature is 6/8. The first staff begins with a treble clef and a 6/8 time signature. The second staff continues the melody. The third staff starts with a repeat sign. The fourth staff ends with a double bar line and a repeat sign, with an asterisk (\*) above the final measure.

Hands all Six round .| and back again :|  
 then lead down two Cu. the 2d. and 3d. Cu. fol-  
 lows .| foot it and turn your Partner and  
 cast off :| the Man hands round with the 3d. Cu.  
 the Wo. heys with the 2d. Cu. .| the Man heys with  
 the 3d. Cu. and the Wo. hands 3 with the 2d, Cu.  
 :| then lead thro' Bottom and top and turn

## The Fairy Queen. Ca1758.040

The musical notation for 'The Fairy Queen. Ca1758.040' consists of two staves of music. The key signature is G major (one sharp) and the time signature is 2/4. The first staff begins with a treble clef and a 2/4 time signature. The second staff continues the melody and ends with a double bar line and a repeat sign.

The 1st. Man turn the 2d. Wo.  
 with his Right hand and his  
 Partner with his Left .| the  
 1st. Wo. do the same with the  
 two Men :| Cross over half  
 figure .| lead thro' the Bottom  
 and cast up and turn :|



## The Village Parson. Ca1758.041



The 1st. Cu set and turn .| Change  
Sides set and turn :| Cast off half fi-  
gure .| and Right and Left :|

## Crowding Jack. Ca1758.042

Musical notation for 'Crowding Jack. Ca1758.042'. The piece is in 2/4 time and D major. It consists of three staves. The first staff begins with a treble clef, a key signature of two sharps (F# and C#), and a 2/4 time signature. The melody features several triplet markings (indicated by a '3' below the notes). The second staff continues the melody, also featuring triplet markings. The third staff continues the melody, ending with a triplet marking and a double bar line with repeat dots. A small asterisk (\*) is placed above the final measure of the third staff, and a double asterisk (\*\*) is placed to its right.

The 1st. Man set Back to Back with the 2d. Wo.  
.| the Wo. do the same with the 2d. Man :|  
Cross over two Cu. lead up to the top foot it  
and cast off .| foot it Back to Back with  
your Partner Right and Left at top :|

## Sr. Thomas Sleeper. Ca1758.043

The 1st. Cu. heys contrary sides  
 .| then on your own sides :| gallop  
 down and up and cast off & Right  
 and Left :|

## Roy Stewart's Reel. Ca1758.044

The 1st. Cu. cast off hands 4 round with the  
 3d. Cu. .| cast up hands 4 round with the 2d.  
 Cu. :| Cross over two Cu. lead up to the top  
 cast off :| then turn contrary Corners with  
 your Right hand and Partners with your  
 Left .| the other Corners the same :|  
 and lead thro Sides and turn :|

## The Threepenny Hop. Ca1758.045

The 1st. and 2d. Cu. foot it & Right  
 and Left half round .| the same back  
 again :| Right hands across all 4  
 the same back again :| Set across  
 and turn .| the Wo. do the same :|  
 Cross over and half figure & hands  
 all six round :|

Horatio's Maggot. Ca1758.046  
Maggot

The 1st. Cu. gallop down two Cu. up a-  
gain and cast off .| the 2d. Cu. do the  
same :| the 1st Cu. change Places  
and lead out to the Wall .| Come  
into their own Places and lead out on?  
their own Sides :| Set cross & turn .|  
the Wo. do the same :| Cross over  
half figure and Right & Left

## Alexander's March into Babylon. Ca1758.047

The 1st Cu. cast off one Cu. & cross  
over the 3d. Cu. .| the same back  
again :| Cross over half figure and  
Right and Left :|

## Yorkshire Ned. Ca1758.048

The 1st. Cu. set to the 2d. Wo. and  
not turn .| the same to the 2d. Man  
:| Right hands across half round .|  
the same back again :| gallop down  
and up and cast off :| and Right  
and Left :|