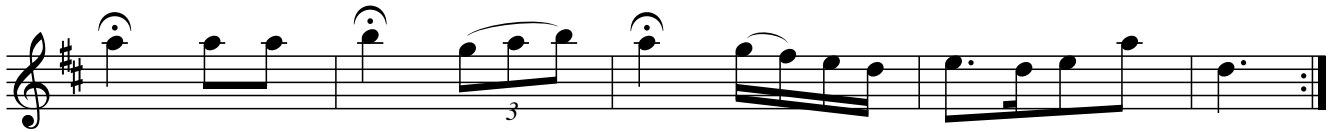


The Galley Slave. JBut.996



Only 1 sharp in MS- see NB



Appears in the Litten MS in Major key

The Garland of Love. JBut.997

musical score for 'The Garland of Love' in G major, 6/8 time. The score consists of eight staves of music. The first staff begins with a treble clef, a key signature of one sharp (F#), and a 6/8 time signature. The music is written in a single melodic line. The second staff contains a note with a fermata and the annotation 'NB1' below it, and a note with a fermata and the annotation 'crotchet in MS' below it. The third staff ends with a double bar line and repeat dots. The fourth staff begins with a double bar line and repeat dots. The fifth staff contains a note with a fermata. The sixth staff contains a note with a fermata. The seventh staff contains a note with a fermata and the annotation 'NB3' below it. The eighth staff contains a note with a fermata and the annotation 'NB4' below it.

The Self. JBut.998

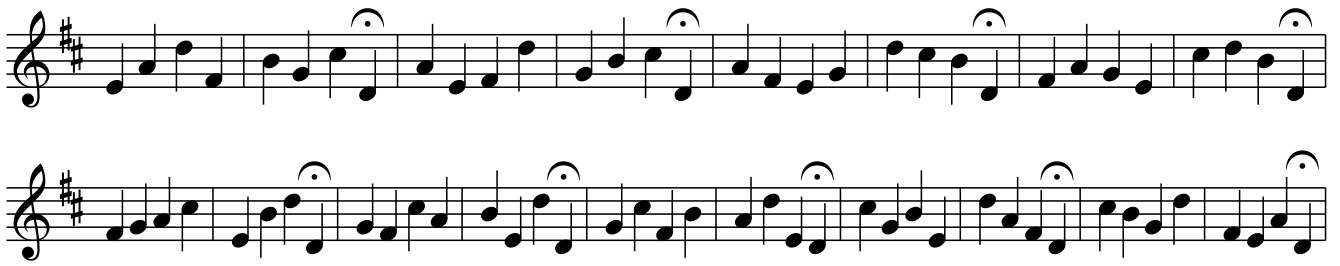
Musical score for 'The Self. JBut.998' in G major and 6/8 time. The score consists of four staves of music. The first staff begins with a treble clef, a key signature of one sharp (F#), and a 6/8 time signature. The melody is composed of eighth and quarter notes, with some slurs. The second staff continues the melody and ends with a double bar line and repeat dots. The third staff starts with a repeat sign and continues the melody. The fourth staff concludes the piece with a double bar line and repeat dots.

Lord Moiros Return to Scotland. JBut.999

Musical score for 'Lord Moiros Return to Scotland. JBut.999' in G major and common time. The score consists of six staves of music. The first staff begins with a treble clef, a key signature of one sharp (F#), and a common time signature. The melody is highly rhythmic, featuring many sixteenth and thirty-second notes, often grouped with slurs. The second staff continues the melody with a repeat sign. The third staff continues with a repeat sign. The fourth staff continues with a repeat sign. The fifth staff continues with a repeat sign. The sixth staff concludes the piece with a double bar line and repeat dots.

A Peal On 2 Bells. JBut.1000

The image displays a musical score for a peal on two bells, consisting of 12 staves of music. The score is written in treble clef with a key signature of one sharp (F#) and a common time signature (C). The first staff begins with a common time signature and a key signature of one sharp. The music is characterized by a steady eighth-note rhythm. The first two staves feature long, sweeping melodic lines that span across multiple measures, with some notes marked with fermatas. The remaining ten staves consist of more regular, eighth-note patterns, with several notes throughout the piece marked with fermatas. The overall structure is a continuous melodic sequence typical of a peal.



The Regency, JBut.1001



The Isle Of France. JBut.1002

Musical score for 'The Isle Of France' in G major, 2/4 time. The score consists of six staves of music. The first two staves form the first phrase, and the next four staves form the second phrase. The notation includes various rhythmic values such as eighth and sixteenth notes, and rests. A repeat sign is present at the beginning of the second phrase.

NB

no repeat marks, as in ms

rest added to make bar length cor

Yea Sons of England. JBut.1003

Musical score for 'Yea Sons of England' in G major, 2/4 time. The score consists of five staves of music. The first two staves form the first phrase, and the next three staves form the second phrase. The notation includes various rhythmic values such as eighth and sixteenth notes, and rests. A repeat sign is present at the beginning of the second phrase.

semi-quavers in ms

Jessey the Flower of Dunn Blane. JBut.1004
Jessie the Flower O' Dunblane. JBut.1004

The first five staves of music are in treble clef, key of D major (one sharp), and 3/8 time. The melody consists of eighth and sixteenth notes, with some triplet-like patterns. The fifth staff ends with a double bar line and a repeat sign, with the text "as MS" written below it.

An unrelated tune?

The last three staves of music are in treble clef, key of D major (one sharp), and 3/8 time. The melody is simpler, primarily using quarter and eighth notes. The third staff ends with a double bar line and a repeat sign.

Quick Step, Untitled. JBut.1005

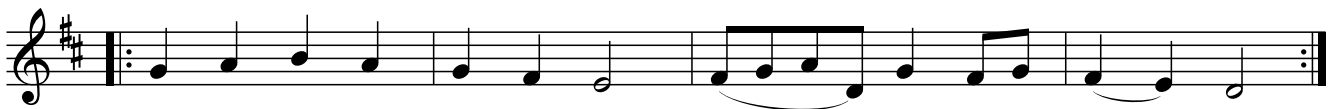


dotted in ms



note lengths as ms

Hymn For Easter Day. JBut.1006 Jesus Christ Is Risen Today, aka. JBut.1006



Martins Lain. JBut.1007



Musical score for Martins Lain. JBut.1007, consisting of six staves of music in treble clef with a key signature of one sharp (F#) and a common time signature (C). The score includes several annotations: "as ms" appears on the third and fourth staves, and "repeat mark omitted" is noted at the end of the sixth staff.

Nativity. JBut.1008



Musical score for Nativity. JBut.1008, consisting of four staves of music in treble clef with a key signature of one sharp (F#) and a 2/4 time signature. The score includes annotations: "as ms" on the third staff and "no 3 mark in ms" with a "3" above a triplet on the fourth staff.

Jerusalem.JBut.1009



semi-breve in ms



semi-breve in ms