

Tarry Awhile. B&W.1803.01
 Tarry Awhile With Elle, aka. B&W.1803.01

rest added

The musical score for 'Tarry Awhile' is written in 6/8 time. It consists of four staves of music. The first staff begins with a treble clef, a key signature of one sharp (F#), and a 6/8 time signature. A 'rest added' annotation is placed above the first measure. The melody is composed of eighth and quarter notes. The second and fourth staves end with double bar lines and repeat dots. The third staff begins with a repeat sign.

Set & turn hands 3 with the 2nd lady Ditto with 2nd Gent:
 down the middle up again & Allemand

The Hamburg Waltz. B&W.1803.02

The musical score for 'The Hamburg Waltz' is written in 3/4 time. It consists of four staves of music. The first staff begins with a treble clef, a key signature of two sharps (F# and C#), and a 3/4 time signature. The melody is composed of quarter and eighth notes. The second and fourth staves end with double bar lines and repeat dots. The third staff begins with a repeat sign.

Set and hands across, back again
 down the middle up again & Allemand.

Lady Harriot Leslies Waltz. B&W.1803.03

The musical score for 'Lady Harriot Leslies Waltz' is written in 3/8 time with a key signature of one flat (B-flat). It consists of three staves. The first staff begins with a 'rest added' annotation above a quarter rest. The second staff starts with a piano (*p*) dynamic marking. The third staff features a forte (*f*) dynamic marking and includes triplet markings (3) and first/second ending brackets (1 and 2).

Set and hands across .| back again :|
middle up again :|. Allemand :|.. Swing Corners .:|:.

Miss Louisa Johnstones Fancy. B&W.1803.04

The musical score for 'Miss Louisa Johnstones Fancy' is written in 2/4 time with a key signature of one sharp (F#). It consists of three staves. The first staff has a trill ('tr') marking above a note. The second staff features several accents (v) above notes. The third staff has trill ('tr') markings above notes.

Set & hands 3 round on the Ladies side .| Ditto on Gents :|
Lead down the middle & up again .|: Allemand :|
hands 4 at bottom .:|: Right & left at top.

Trip to Weymouth. B&W.1803.05

Musical score for 'Trip to Weymouth. B&W.1803.05'. The score consists of three staves of music in 3/4 time, key of B-flat major. The first staff contains the main melody with four trills (tr) marked above the notes. The second and third staves provide accompaniment, with trills also marked above some notes.

Set & half right & left .| back again :|
Down the middle up again .: Allemand :|

Garnerins Waltz. B&W.1803.06

Musical score for 'Garnerins Waltz. B&W.1803.06'. The score consists of three staves of music in 3/4 time, key of B-flat major. The first staff contains the main melody. The second and third staves provide accompaniment, with dynamics *f* (forte) and *p* (piano) indicated.

Set and hands across .| back again :|
lead down the middle, up again :|. Allemand :|
Swing Corners .:|: . .

The Fairies Revels. B&W.1803.07

The musical notation for 'The Fairies Revels' consists of four staves of music. Each staff begins with a treble clef, a key signature of one sharp (F#), and a time signature of 6/8. The first staff starts with a repeat sign. The melody is primarily eighth and sixteenth notes, with some quarter notes. The second staff ends with a double bar line and repeat dots. The third staff also begins with a repeat sign. The fourth staff ends with a double bar line and repeat dots.

Cast off Couples and up again .|
Change Sides & back again :|
down the middle up again :|. hands 6 round .

The Parachute. B&W.1803.08

The musical notation for 'The Parachute' consists of two staves of music. Both staves begin with a treble clef, a key signature of three sharps (F#, C#, G#), and a time signature of 3/8. The first staff starts with a repeat sign. The melody features a mix of eighth and sixteenth notes. The second staff begins with a repeat sign and includes some notes with accents. Both staves end with a double bar line and repeat dots.

Set & half right & left .| back again |:
down the middle and up again :|. Allemand :|

page missing from ms B&W.1803.09

page missing from ms B&W.1803.10

page missing from ms B&W.1803.11

page missing from ms B&W.1803.12

Madame Ricamiers Waltz. B&W.1803.13

Set and hands across back again :| lead down the middle,
up again :|. Allemand :||: Swing Corners .

The Aerial Flight. B&W.1803

Mrs. Morthland, aka. B&W.1803

Set and Change Sides, .| back again
Cross over two Couple :|. right and left :|

The Eclipse. B&W.1803.15

Compos'd by Mr. W. Ware

The musical score for 'The Eclipse' consists of four staves of music. The first staff begins with a treble clef, a key signature of one flat (B-flat major), and a 2/4 time signature. The music is written in a single melodic line. The second and third staves continue the melody with various rhythmic patterns, including eighth and sixteenth notes. The fourth staff concludes the piece with a final cadence.

Set & half right & left .| back
again :| down the middle :|. Pousette :|

Mrs Hamiltons of Wishaws Strathspey. B&W.1803.16

The musical score for 'Mrs Hamiltons of Wishaws Strathspey' consists of three staves of music. The first staff begins with a treble clef, a key signature of two sharps (C major), and a common time signature (C). The music is written in a single melodic line. The second and third staves continue the melody with various rhythmic patterns, including eighth and sixteenth notes. The word 'sic' is written below the second staff. The third staff concludes the piece with a final cadence.

The first Lady Set to 2nd Gent: & turn. |
the first Gent: set to the 2nd Lady & turn: |
down the middle and uo again .: Allemand :|

Earl of Northesks Strathpey. B&W.1803.17

Niel Gows Lamentation for Dr. James Moray of Abercarney. B&W.1803.17

Musical score for 'Earl of Northesks Strathpey' in G major, 2/4 time. The score consists of three staves. The first staff begins with a treble clef, a key signature of one sharp (F#), and a common time signature (C). The melody is characterized by eighth and sixteenth notes, with a trill (tr) in the second measure. The second and third staves continue the melody, featuring more trills and a final double bar line with repeat dots.

Tha 1st Lady leads down the middle and up again
with the 2nd Gent: |. the 1st Gent: Ditto with 2nd
Lady :| Cross over :|. hands 6 around :|

Mr John Shaw Stewards Strathspey. B&W.1803.18

John Stewarts Strathspey. B&W.1803.18

Sir John Shaw Stewarts Strathspey. B&W.1803.18

Neil Roy. B&W.1803.18

Ghlass Ault. B&W.1803.18

Musical score for 'Mr John Shaw Stewards Strathspey' in G minor, 2/4 time. The score consists of three staves. The first staff begins with a treble clef, a key signature of two flats (Bb, Eb), and a common time signature (C). The melody features eighth and sixteenth notes, with a trill (tr) in the second measure. The second and third staves continue the melody, featuring more trills and a final double bar line with repeat dots.

Set and change Sides .| back again :|
Down the middle and up again :|. |
Right and left at top :|

Bland & Weller 24s, 1803

Earl of Eglintons Strathspey. B&W.1803.19

Lord Eglintons Reel. B&W.1803.19

Three staves of musical notation for the Earl of Eglintons Strathspey. The first staff is in treble clef with a key signature of one sharp (F#) and a common time signature (C). The second and third staves are in bass clef with the same key signature and time signature. The music consists of a series of eighth and sixteenth notes, with a trill (tr) indicated above a note in the second staff.

Set & hands across .| back again :|
down the middle & up again :|. Allemand :||:

The Gooseberry Bush or ... B&W.1803.20

Epping Forest. B&W.1803.20

The Marquis of Tullibardine's Jig, aka. B&W.1803.20

Three staves of musical notation for The Gooseberry Bush or ... B&W.1803.20. The first staff is in treble clef with a key signature of two flats (Bb, Eb) and a 3/8 time signature. The second and third staves are in bass clef with the same key signature and time signature. The music features a mix of eighth and sixteenth notes, with some triplets and a sharp sign (#) at the end of the third staff.

Half right & then left .| back again :|
Down the middle & up again :|. Allemand :|

Trip to Paris. B&W.1803.21
 Joseph's Frolick, aka. B&W.1803.21
 Mr. Sharpe of Hoddoms Delight, aka. B&W.1803.21

Four staves of musical notation in treble clef, key of D major (two sharps), and 3/8 time signature. The first staff begins with a repeat sign. The second and fourth staves end with repeat signs. The music consists of eighth and sixteenth notes, often beamed together, with some slurs and trills.

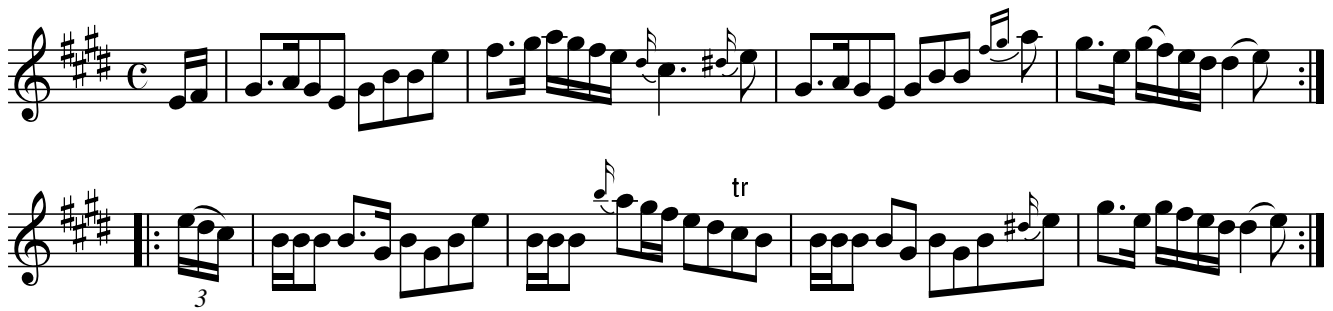
Set & hands across .| back again :|
 down the middle & up again :|. Allemand :

This is not my ain House. B&W.1803.22

Three staves of musical notation in treble clef, key of D major (two sharps), and common time (C). The first staff begins with a repeat sign. The second and third staves contain trills, indicated by 'tr' above the notes. The music features eighth and sixteenth notes, often beamed together, with some slurs.

Cast off 2 Couple .| up again :| down
 the middle up again :|. Allemand :|
 Turn Corners .:|:|. lead outsides ::|:|

Miss Barbara Parkers Fancy. B&W.1803.23



Set & Change Sides .| back again :|
lead down the middle up again :|. Allemand :|

The General Election. B&W.1803.24



Hands 3 round on Lady's side .| Ditto on the
Gents: :| down the middle up again :|
Allemand :||: Swing Corners .:|:.